

Assembly Instructions

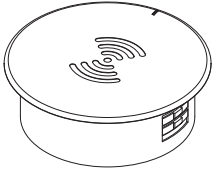
⚠ Important ⚠

Before you begin, read and comply with all safety and operating instructions, and ensure all parts and correct quantities are included.

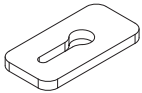
Any parts damaged during shipment must be reported within 5 days of receipt. To report information regarding missing parts or damage, to purchase parts or accessories, or if you have any questions, please contact us.

www.spectrumfurniture.com
800-235-1262, 715-723-6750

Thank you for purchasing Spectrum products!

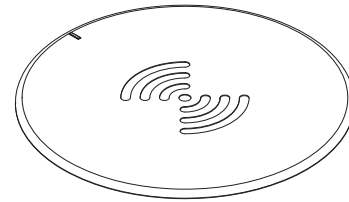


(1) 0191147
EM Wireless Charging Pad



(1) 0142246
Security tab

- If the worksurface needs to have a cutout made to receive the charging pad, refer to the hole-cutting instructions first (included). Then proceed with the installation instructions below.
- The unit requires a 7" diameter of clearance to work with Qi-enabled phones placed in any orientation.
- The 3" dia cutout needs to be located on the worksurface at least 3.5" from any edge.

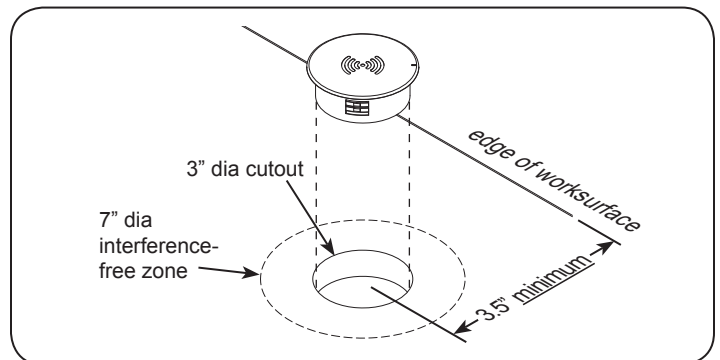


EM Wireless Charging Pad 99057

Tools
Required



Phillips
screwdriver



Installation

1. Partially unscrew (1) of the flat head screws under the unit. **Figure 1.**
2. Place the security tab over the flat head screw. **Figure 2.**

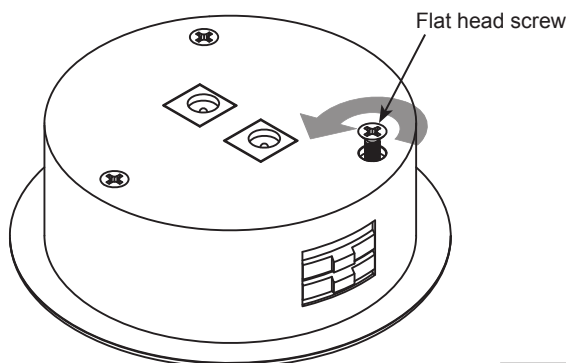


Figure 1

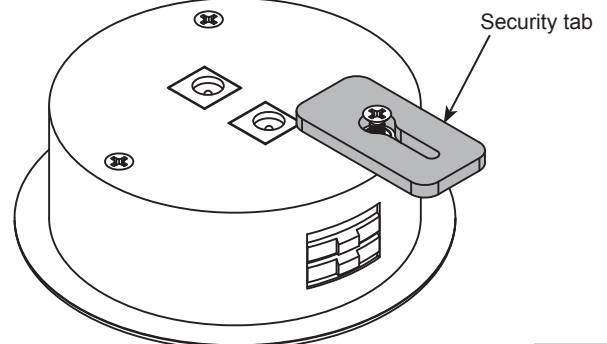


Figure 2

- Orient the security tab so it points inward and tighten the screw. **Figure 3.** Do not overtighten as you will need to rotate the tab back out again after installing in worksurface.

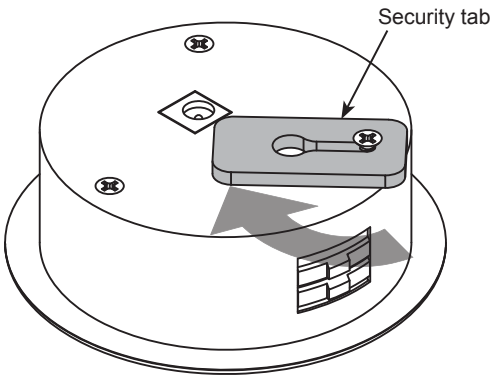


Figure 3

- Place the unit into the worksurface cutout. **Figure 4.**

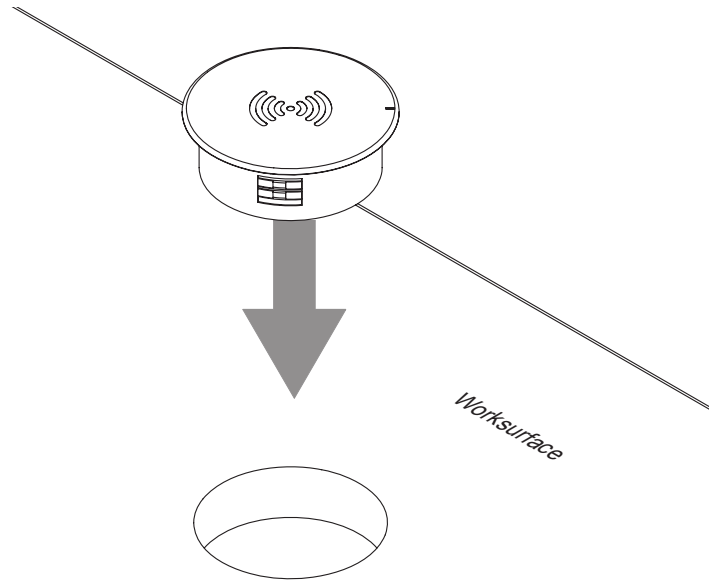


Figure 4

- From below the worksurface, rotate the security tab back out. **Figure 5.** Retighten screw if necessary.
- Connect power cable.

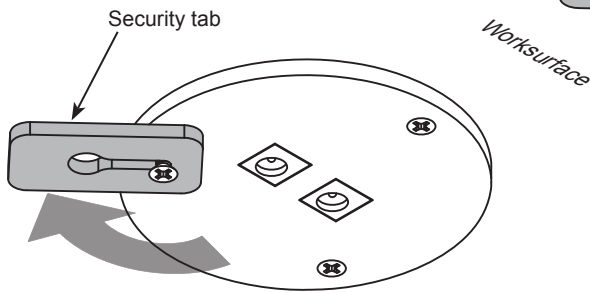


Figure 5

- Connect AC adapter power cord to charging pad. **Figure 6.**
- Plug AC adapter into wall outlet.

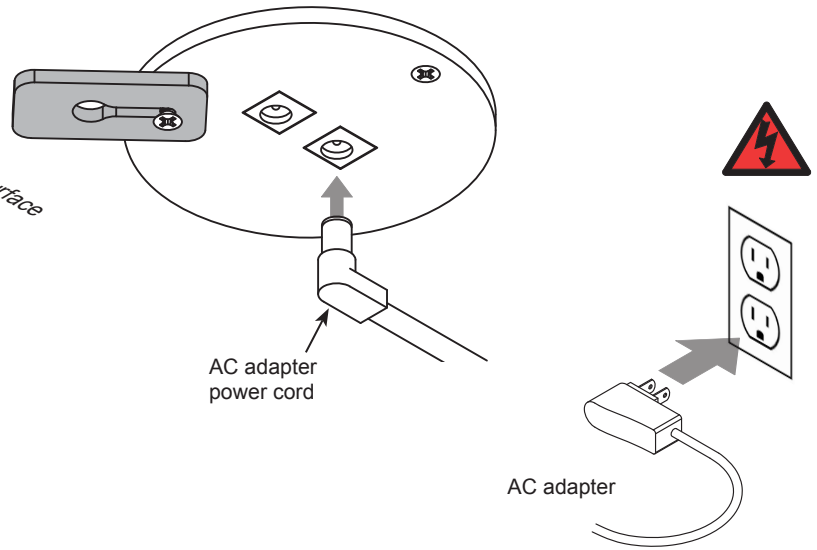


Figure 6