

# Assembly Instructions

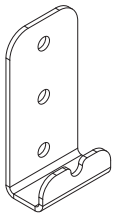
## ⚠ Important ⚠

Before you begin, read and comply with all safety and operating instructions, and ensure all parts and correct quantities are included.

Any parts damaged during shipment must be reported within 5 days of receipt. To report information regarding missing parts or damage, to purchase parts or accessories, or if you have any questions, please contact us.

[www.spectrumfurniture.com](http://www.spectrumfurniture.com)  
800-235-1262, 715-723-6750

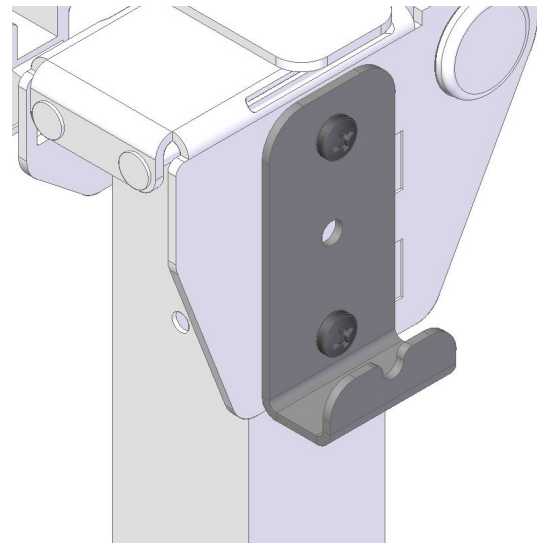
Thank you for purchasing Spectrum products!



(1) 0145227  
Backpack  
Hanger



(2) 026064  
1/4-20 x 5/8"  
PHMS



## Backpack Hanger Flex Active Flip Table 99061

### Installation



1. Choose one of the two available positions for the hanger. **Figure 1.**
2. Align the bracket with the mounting holes on the leg and attach with (2) 1/4-20 x 5/8" PHM screws.
3. Tighten screws securely.

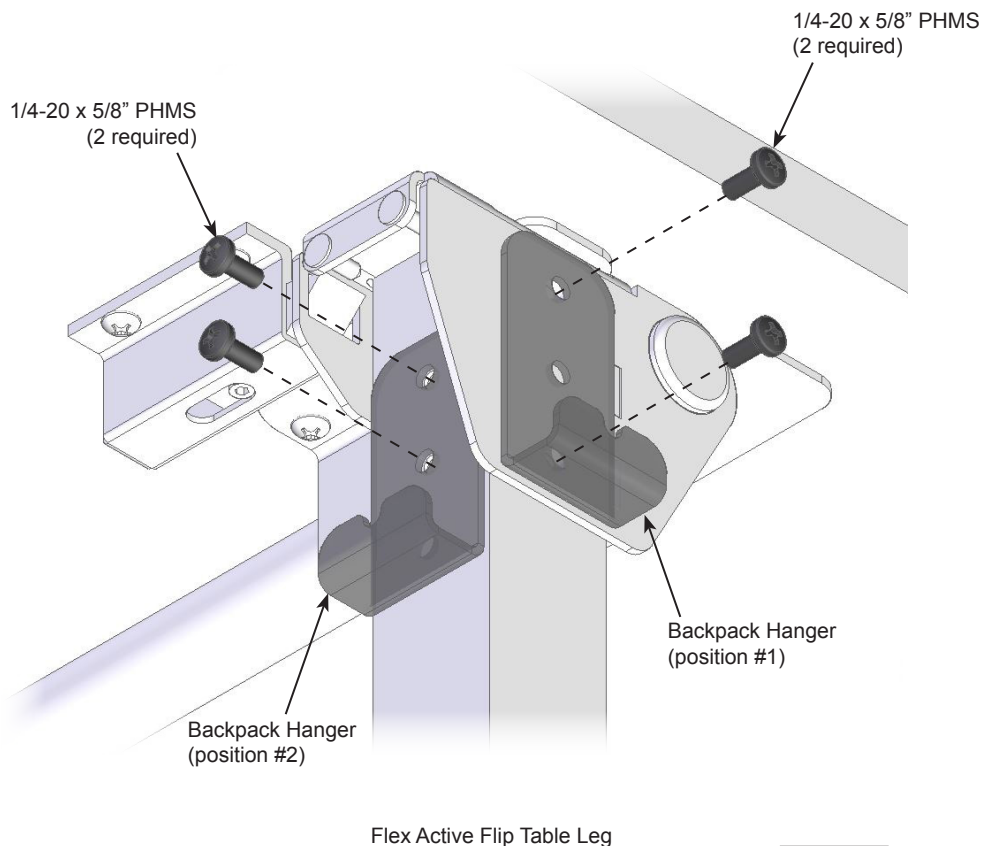


Figure 1