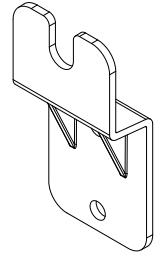


Assembly Instructions

Touchboards

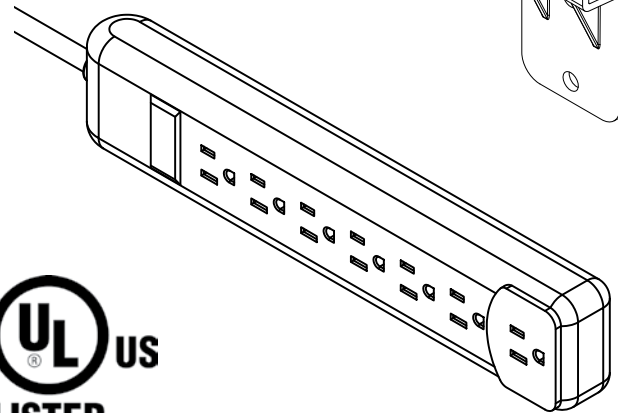
205 Westwood Ave, Long Branch, NJ 07740
 Phone: 866-94 BOARDS (26273) / (732)-222-1511
 Fax: (732)-222-7088 | E-mail: sales@touchboards.com



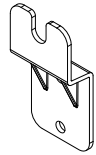
Important
 Before you begin, please make sure all parts and proper quantities are included. Any parts damaged during shipment must be reported within 15 days of receipt. To report information regarding damage, to purchase parts or accessories, or if you have any questions, please contact us at:

www.spectrumfurniture.com
 715-723-6750, 800-235-1262

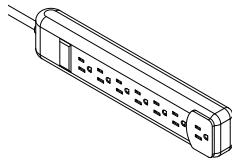
Thank you for purchasing Spectrum products!



Power Strip Kit 55404



(2) 0116530
cord wrap bracket



(1) 052741
power strip
7-outlet with 12' cord



6" Velcro® strips
 (1) 052309 - Hook
 (1) 052310 - Loop



(4) 052605
1/4-20 x 15mm JC bolt



(4) 041943
1/4-20 locknut

1. Install cord wrap brackets

1. Determine which side of the cart or lectern the power cord will exit.
2. With the cord wrap brackets pointing away from each other as shown in **Figure 1**, attach each to the side of the unit with (2) 1/4-20 x 15mm JC bolts and (2) 1/4-20 locknuts from the inside.
3. Tighten securely.

Note: Some units have riv-nuts (threaded inserts) integrated into the side panels. In this case, the locknuts will not be needed.

2. Install power strip

1. Power strips are typically attached to base or side panels inside the cart. Determine the best location for your application while making sure the power strip does not interfere with any rack-mount equipment or other items inside the unit.
2. Attach the power strip inside the unit to the base panel or one of the side panels using the self adhesive hook and loop strips. **Figure 2A**.
3. Route the power cord through the side grommet. **Figure 2B**.
4. Wrap the cord around the brackets as shown when unit is mobile or not in use. **Figure 2B**.

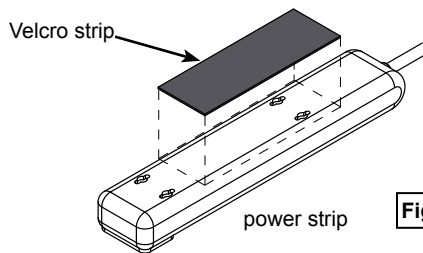


Figure 2A

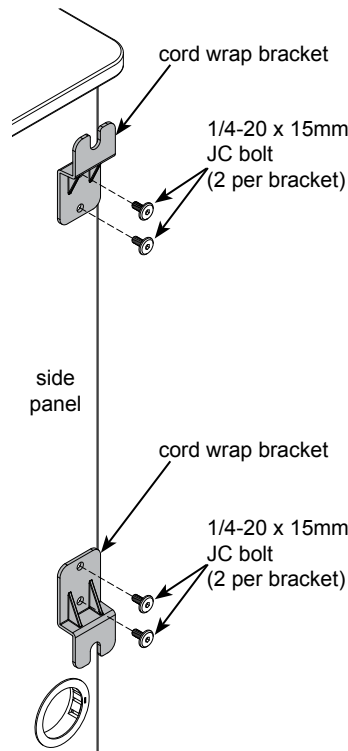


Figure 1

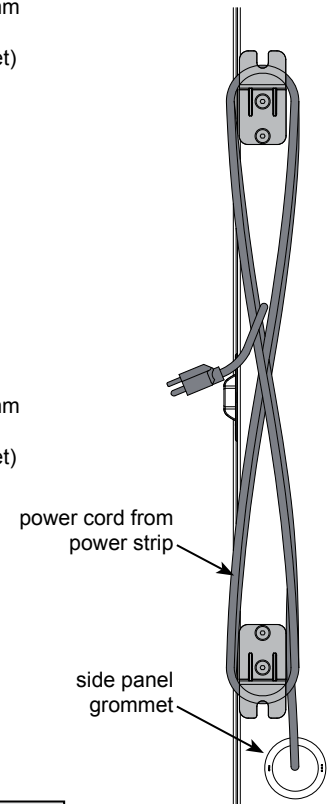
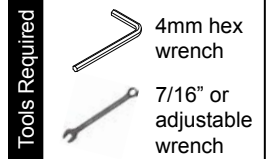


Figure 2B

Note: Do not connect any electrical equipment to the power strip until it is mounted securely. Keep the power strip switched off until plugged into a wall outlet. To maintain UL-compliance, do not "daisy-chain" multiple power strips. See instructions included with the power strip for further installation, operational, and safety instructions.