

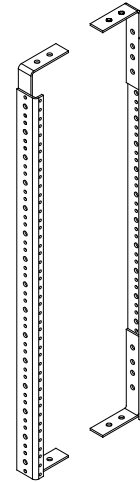
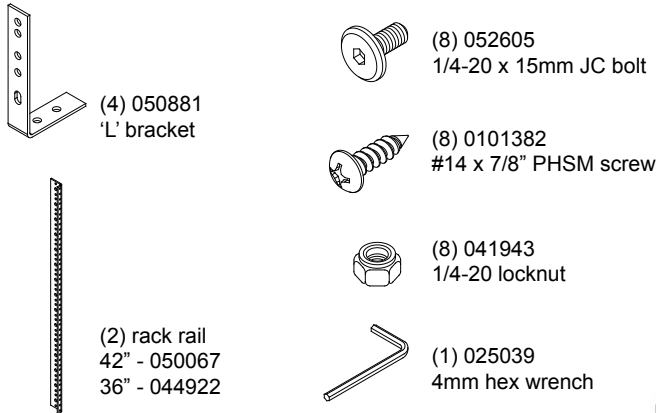
# Assembly Instructions

## Important

Before you begin, please make sure all parts and proper quantities are included. Any parts damaged during shipment must be reported within 15 days of receipt. To report information regarding damage, to purchase parts or accessories, or if you have any questions, please contact us at:

[www.spectrumfurniture.com](http://www.spectrumfurniture.com)  
715-723-6750, 800-235-1262

Thank you for purchasing Spectrum products!



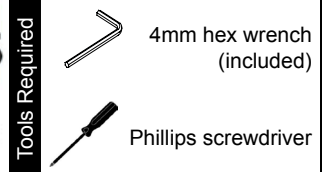
Rear Rack Rail Kit  
for Inspiration Lectern  
36" - 55408  
42" - 55407

## 1. Attach rack rail 'L' brackets to lectern

- Each rack rail requires an upper and lower "L" bracket. Open rear door. Attach each lower bracket to the base panel as shown with (2) #14 x 7/8" PHSM screws, but do not tighten completely yet. **Figure 1.**  
**Note: The side of the bracket with the two holes will mount either to the base panel or worksurface.**
- Repeat this procedure for the 2 upper brackets on the underside of the worksurface.

**Touchboards**

205 Westwood Ave, Long Branch, NJ 07740  
Phone: 866-94 BOARDS (26273) / (732)-222-1511  
Fax: (732)-222-7088 | E-mail: [sales@touchboards.com](mailto:sales@touchboards.com)



## 2. Attach rack rails to brackets

- Using 1/4-20 x 15mm JC bolts and locknuts, attach the rack rails to the outside (toward the side panel) of the brackets as shown. **Figure 2.**  
**Note: The locknuts need to be on the outer side of the rack rails.**
- Repeat this procedure on the upper side of the rack rails under the worksurface.
- Tighten all fasteners securely.

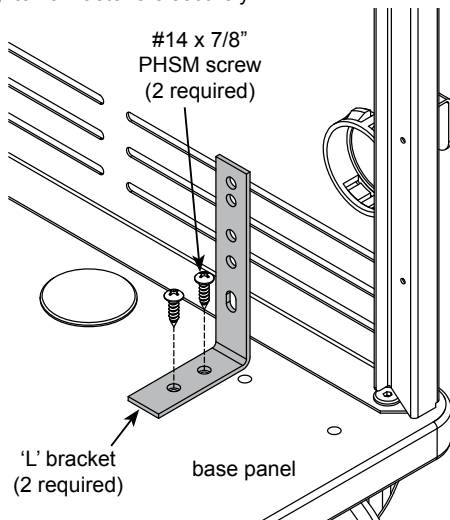


Figure 1

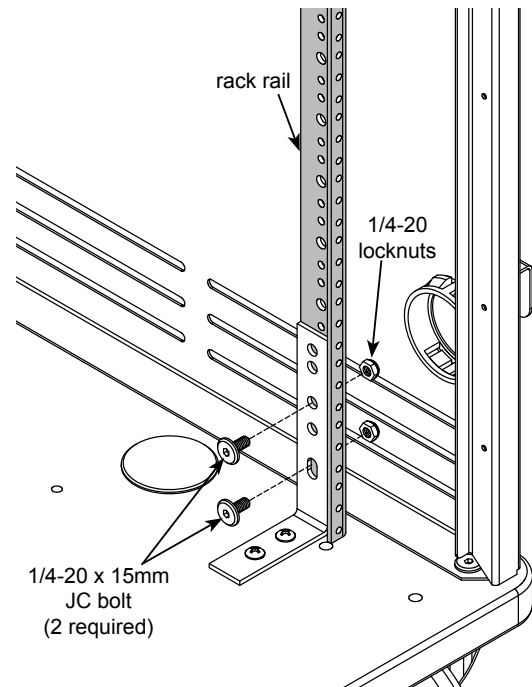


Figure 2