

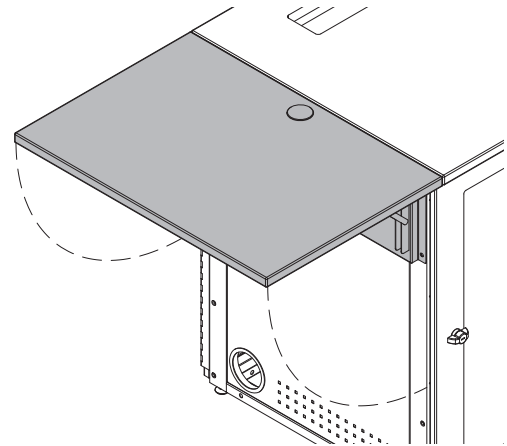
# Assembly Instructions

## Important

Before you begin, please make sure all parts and proper quantities are included. Any parts damaged during shipment must be reported within 15 days of receipt. To report information regarding damage, to purchase parts or accessories, or if you have any questions, please contact us at:

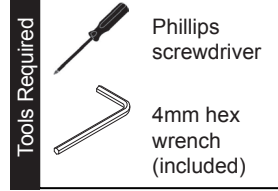
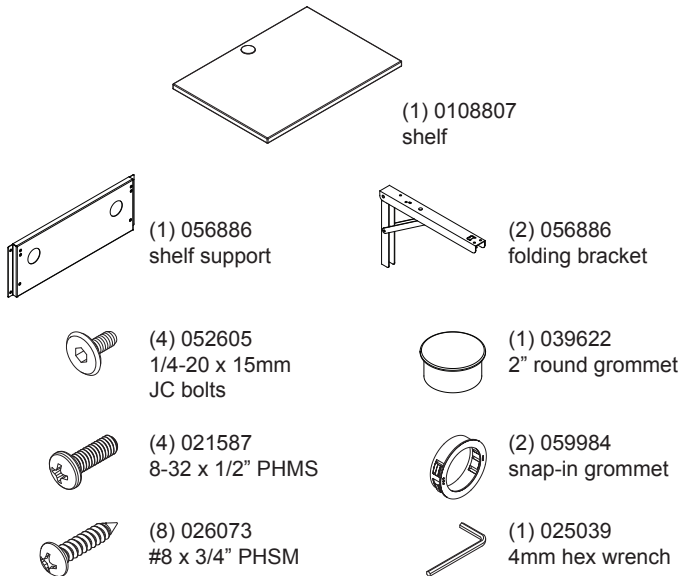
**www.spectrumfurniture.com**  
715-723-6750, 800-235-1262

Thank you for purchasing Spectrum products!



## Flip-up shelf for equipment rack 68204

Note: The shelf should only be attached to a pre-assembled console. For stability reasons, Spectrum does not recommend attaching the shelf to a stand-alone equipment rack. Do not exceed 50 lbs of weight on shelf. Not compatible with end-support legs.



## 1. Attach shelf support & folding brackets to equipment rack

1. Align and attach the shelf support to the side of the equipment rack with (4) 1/4-20 x 15mm JC bolts and tighten securely. **Figure 1.**
2. Install the two snap-in grommets into the shelf support.
3. Extend and lock the folding shelf brackets into the horizontal position.
4. Align and attach each folding bracket to the shelf support with (2) 8-32 x 1/2" PHM screws. Do not tighten these screws completely yet.

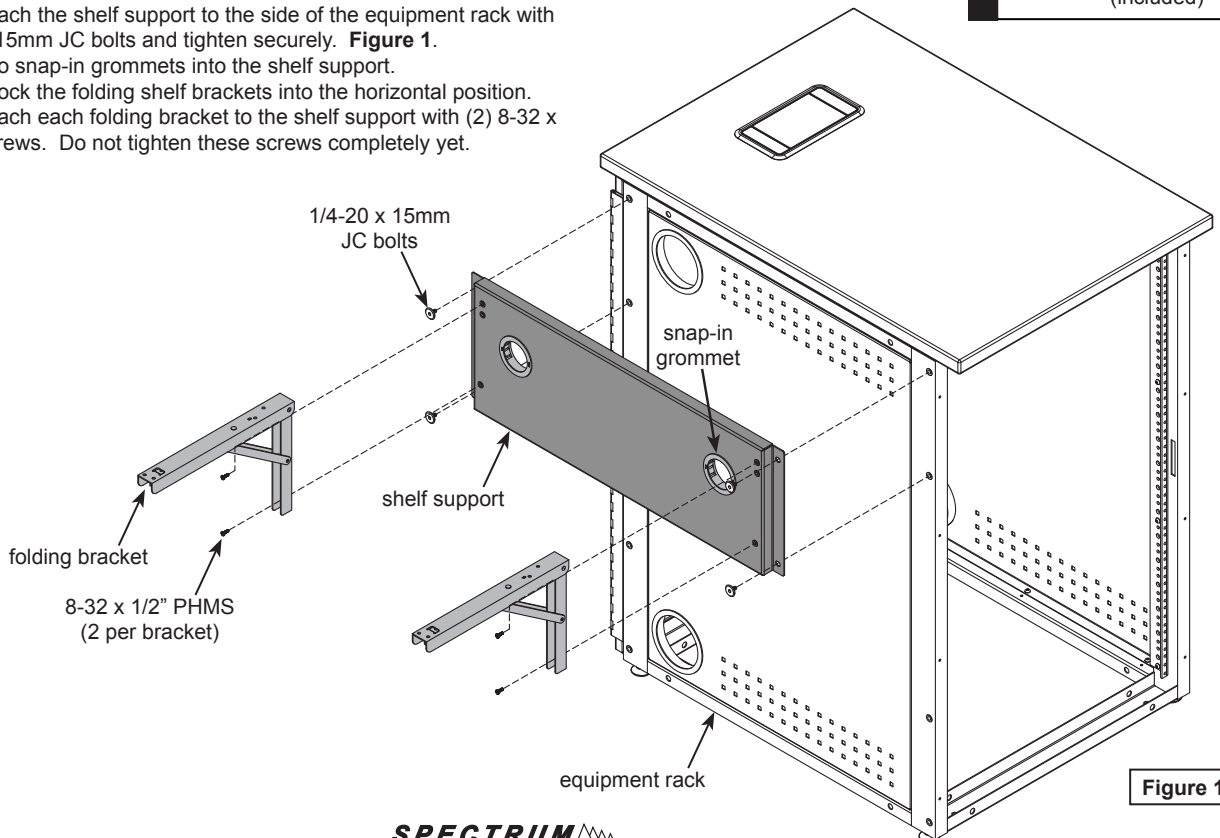


Figure 1

## 2. Attach shelf to folding brackets

1. Attach the shelf to the fully-extended folding brackets with (8) #8 x 3/4" PHSM screws. (4 per bracket). **Figure 2.**
2. Tighten all screws securely.
3. Install 2" shelf grommet.

# Touchboards

205 Westwood Ave, Long Branch, NJ 07740  
Phone: 866-94 BOARDS (26273) / (732)-222-1511  
Fax: (732)-222-7088 | E-mail: sales@touchboards.com

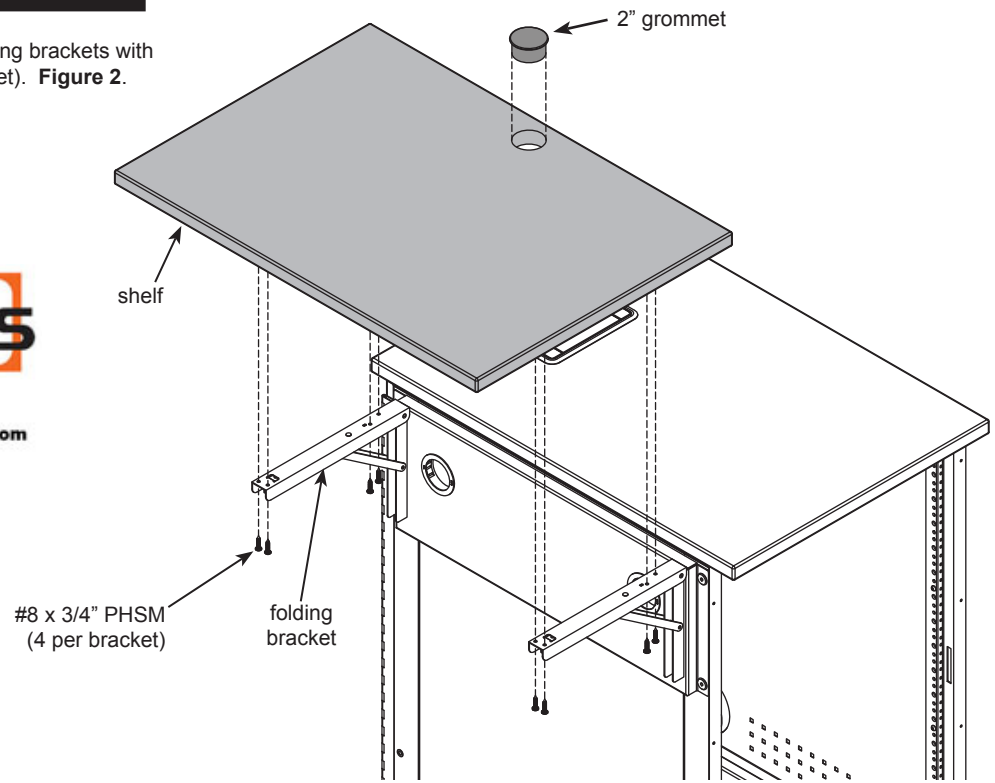


Figure 2

## Shelf operation

To lower or flip-up the shelf, release the levers under each folding bracket at the same time while slowly lowering or raising the shelf. The shelf will lock into place when lifted into the horizontal position.



### Caution

Be careful not to pinch fingers while lowering!  
Do not exceed 50 lbs of weight on the shelf.

Note: Power & communication wiring for document cameras, laptop computers, and/or projectors placed on the flip-up shelf should be routed on top of the audience-side of the shelf. Use of the shelf grommet hole for wiring when the shelf is folded will result in pinching of cords.

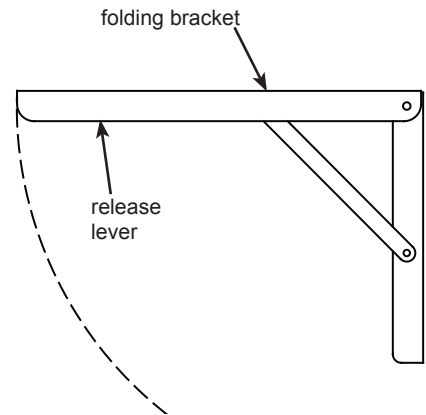


Figure 3