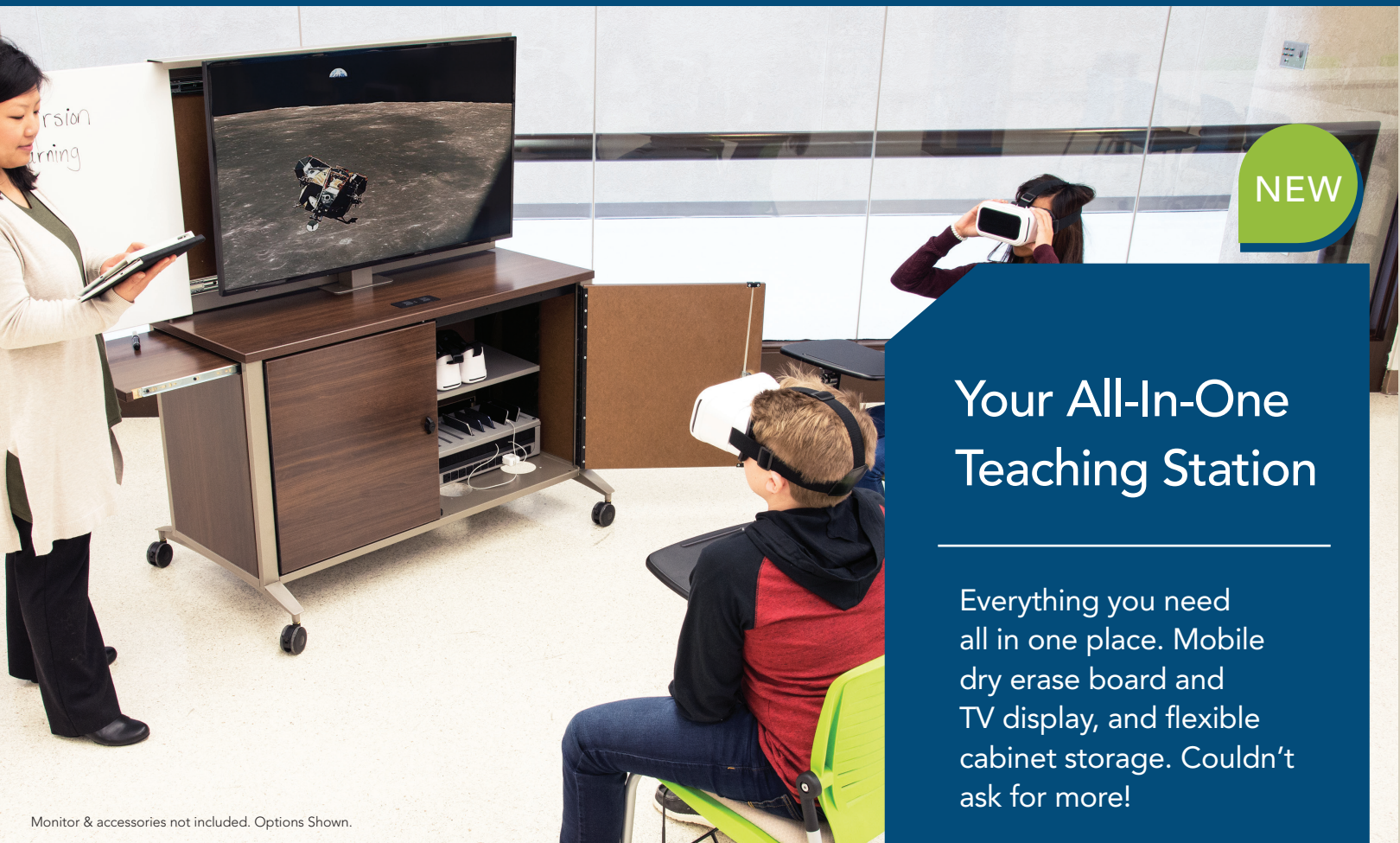




# TechCenter™



Monitor & accessories not included. Options Shown.

## Your All-In-One Teaching Station

Everything you need all in one place. Mobile dry erase board and TV display, and flexible cabinet storage. Couldn't ask for more!

### TECHNOLOGY DRIVEN

- Supports up to a 70" display
- 12RU rack cube (optional) to hold all AV technology
- Display stand can hold up to two displays

### SAFE & SECURE

- ETL listed to UL 60950-1 standard
- Double-bolt latch with locking hasp for superior protection and security
- Powder-coated, heavy-gauge steel frame

MANY OPTIONS TO  
CREATE YOUR PERFECT  
LEARNING SPACE

### ALL -IN-ONE

- Available in single unit or double unit versions
- Optional pull-out shelf teaching stations for extra work space (Double Unit Only)
- Choose a single or double display option or single display with dry erase board on back
- Optional pull-out dry erase boards

### USER-FRIENDLY

- Deluxe locking casters to easily move around the room
- Superior chimney-effect ventilation
- Utilize both sides for two separate groups



INNOVATIVE FURNITURE  
connecting you with technology™



Monitor & accessories not included. Options Shown.

Questions?  
Please contact Spectrum customer service today!  
800-235-1262



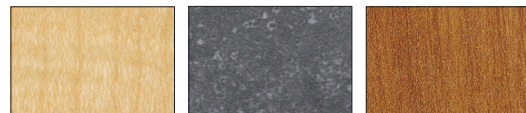
# Build Your Perfect Teaching Station

Simply follow each step below to generate your TECHCENTER™ Product Order Number.  
Record the letter or number code from each step in the corresponding boxes in this order generating chart.

TECHCENTER	1	2	3	4	5	6	7	8	9	10	
	LAMINATE	EDGE COLOR	METAL FINISH	WIDTH/STYLE	DOORS	POWER	PULL OUT SHELF	BASE	RACK OPTIONS	ELECTRICAL	DISPLAY
55227											

## 1 Choose Your Laminate and Edgeband Color

### STANDARD LAMINATE COLOR EXPRESSIONS



Fusion Maple with matching Edgeband  
Graphite Talc with Black Edgeband  
Wild Cherry with matching Edgeband



ORDER CODE FM FM ORDER CODE GT BK ORDER CODE CH CK

### ADDITIONAL LAMINATE COLOR EXPRESSIONS



Black with matching Edgeband  
Bronze Legacy with matching Edgeband  
Cafe' Sienna with matching Edgeband  
Desert Zephyr with matching Edgeband  
Gray with matching Edgeband



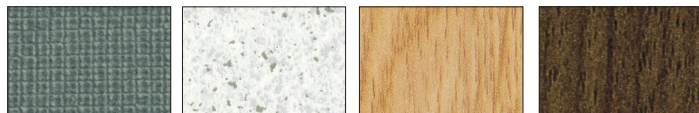
ORDER CODE BK BK ORDER CODE BL BL ORDER CODE CS CS ORDER CODE DZ DZ ORDER CODE GY GY



Island with matching Edgeband  
Misted Zephyr with Silver North Sea Edgeband  
Navajo Red with matching Edgeband  
Pewter Mesh with matching Edgeband  
Royal Blue with matching Edgeband



ORDER CODE IG IG ORDER CODE MZ SN ORDER CODE NR NR ORDER CODE PM PM ORDER CODE RB RB



Steel Mesh with matching Edgeband  
White Fiesta with Black Edgeband  
Castle Oak with matching Edgeband  
Colombian Walnut with matching Edgeband



ORDER CODE SM SM ORDER CODE WF BK ORDER CODE CK CK ORDER CODE CW CW



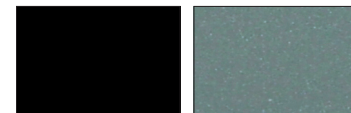
Empire Mahogany with matching Edgeband  
Nepal Teak with matching Edgeband  
Williamsburg Cherry with matching Edgeband



ORDER CODE EM EM ORDER CODE NP NP ORDER CODE WC WC

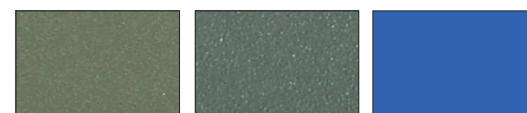
## 2 Choose Your Metal Finish

### STANDARD METAL COLOR EXPRESSIONS



ORDER CODE B Black  
ORDER CODE S Silver Sparkle

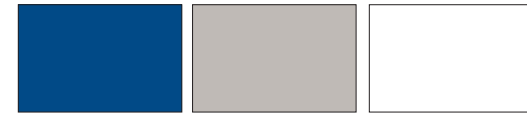
### ADDITIONAL METAL COLOR EXPRESSIONS



ORDER CODE CM Champagne Metallic  
ORDER CODE D Dark Gray  
ORDER CODE LB Light Blue



ORDER CODE LI Lime Green  
ORDER CODE OR Orange  
ORDER CODE SR Signal Red



ORDER CODE BL Spectrum Blue  
ORDER CODE WG Warm Gray  
ORDER CODE UW White



ORDER CODE YW Yellow

## MIX 'N' MATCH



Show your school colors, or color code your classroom! Pick your laminate with a complimentary edgeband!

## 3 Width/Style



ORDER CODE 1 Double Unit Laminate 51" W  
ORDER CODE 2 Double Unit Metal 51" W



ORDER CODE 3 Single Unit Laminate 30" W  
ORDER CODE 4 Single Unit Metal 30" W  
If selecting single unit, Option 6 (Pull Out Shelf) must be 0 - None

## 4 Door Option



ORDER CODE 0 No Door - Open Bin  
ORDER CODE 1 Standard Door

## 5 Power Option



ORDER CODE 1 Power Module Black  
ORDER CODE 2 Power Module Silver  
ORDER CODE 3 Power Module White

ORDER CODE 0 None

## 6 Pull Out Shelf



ORDER CODE 1 Shelf Left  
ORDER CODE 2 Shelf Right  
ORDER CODE 3 Shelf Left & Right

ORDER CODE 0 None

Pull out shelf right not compatible with Electrical Options 1, 2, 3. Select 0 if ordering single unit.

## 7 Base



ORDER CODE 01 Casters  
ORDER CODE 02 Glides

## 8 Rack Options



ORDER CODE 4 Slide in Rack Cube  
ORDER CODE 6 2-Slide in Rack Cube (Double Unit Only)

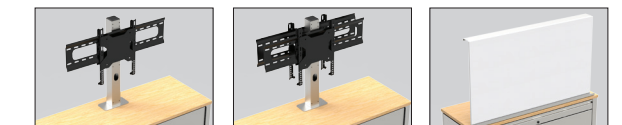
ORDER CODE 0 None

## 9 Electrical Options

ORDER CODE 1 Power Switch  
ORDER CODE 2 PowerProdigy  
ORDER CODE 7 eLogix  
ORDER CODE 0 None

Electrical options 1, 2, 3 not available with pullout shelf right.

## 10 Display Options



ORDER CODE 1 Display Stand  
ORDER CODE 2 Display Stand Front & Back  
ORDER CODE 3 Display Stand w/ Dry Erase Board



ORDER CODE 4 Display Stand w/ Dry Erase Board & Pull Out Left  
ORDER CODE 5 Display Stand w/ Dry Erase Board & Pull Out Right  
ORDER CODE 6 Display Stand w/ Dry Erase Board & Pull Out Left & Right

ORDER CODE 0 None

Note: Color samples are approximate. All Edgeband will match your chosen laminate or as shown, unless you specify differently. Additional Color Expressions may require additional lead time. For more details about the laminates and edgebands available and to request samples, visit [spectrumfurniture.com/expressions](http://spectrumfurniture.com/expressions).

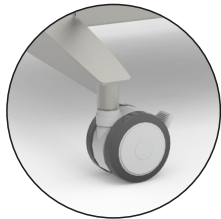
# COLLABORATIVE LEARNING SOLUTIONS



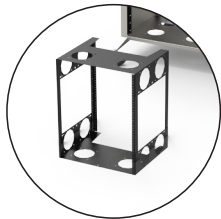
RUGGED DESIGN



OPTIONAL PULL-OUT TEACHING STATION



LOCKING TWIN-WHEEL CASTERS FOR EASY MOBILITY



OPTIONAL 12RU RACK CUBES



Double Unit



Single Unit

▶ ASSEMBLY REQUIRED



Perfect for your Collaborative Learning Spaces!

Shown with Flex Active Tables, Pivot Jr, OM5 Chairs.

## PRODUCT DIMENSIONS

WORKSURFACE DEPTH	20.5"
WORKSURFACE HEIGHT	32.5"
SINGLE UNIT WIDTH	30"
DOUBLE UNIT WIDTH	51"

## WARRANTY

10 YEAR CART
2 YEAR ELECTRICAL

## AVAILABLE MODELS

55227	TECHCENTER (BASE)
-------	-------------------

## OPTIONS/ACCESSORIES

55228	12RU RACK CUBE
99058	POWER MODULE

