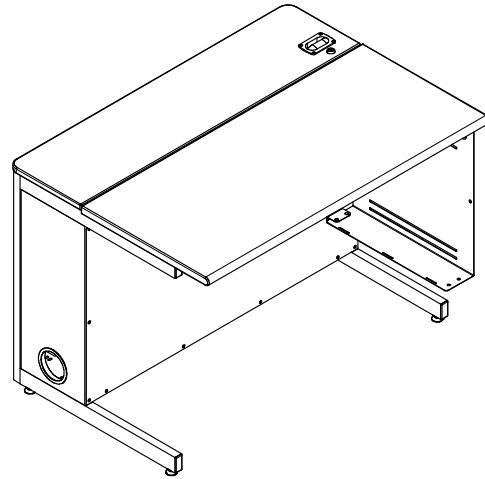
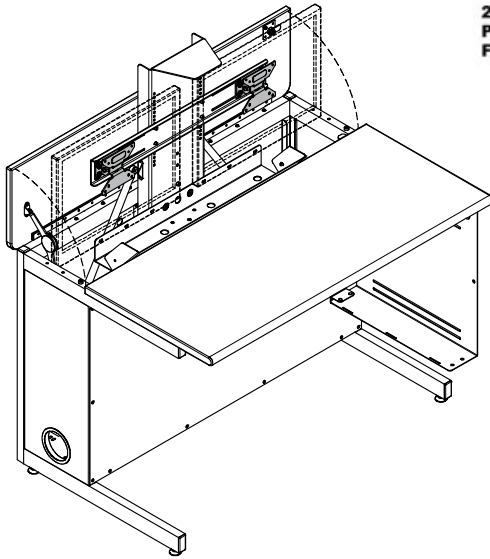


Technical Specifications



205 Westwood Ave, Long Branch, NJ 07740
Phone: 866-94 BOARDS (26273) / (732)-222-1511
Fax: (732)-222-7088 | E-mail: sales@touchboards.com

38964	workstation with lock
38962	workstation



Use the Flex InSight XMS (Extreme Monitor System) Dual Monitor Workstation for dual monitors and PC tower when you need a classroom to double as a traditional classroom and computer lab. Like the original Flex InSight, the InSight XMS is designed to hide-away two monitors in seconds so you have a clear workspace when the computer is not needed. The XMS Desk is ADA compliant (42"W x 30"D" x 29"H) workstation. The steel frame is protected with powder coat for a long lasting finish. The worksurface is constructed of a NAUF composite board with an impact and scratch resistant laminate and is available in a variety of color choices.

Features and Benefits

- Desk allows any classroom to be reconfigured from a lecture hall to a computer training lab in seconds
- Manually-actuated monitor column with pneumatic cylinder spring-assist allows the monitors, keyboard, and mouse to be moved up when needed, and retracted with the lid closed to convert the desk to a conventional student desk
- Easy lift mechanism for two monitors (up to 32 lbs total) with keyboard and mouse
- Large storage compartment for 2 monitors up to 19" in 16:9 aspect ratio
- Vertical lift of monitors to eye level above desk provides ergonomic viewing angle to prevent user fatigue
- Available in locking or non-locking monitor compartment versions
- Proven triple ball bearing rail lift column design provides smooth operation, reliability, and long life
- Built in lift/lower handle is used to lift and lower so monitors are not damaged
- Monitor compartment lid protects and secures dual monitors, keyboard, mouse, and provides 19" of uninterrupted workspace in front of lid
- Monitor compartment is designed so that monitors stay inside compartment width when raising and lowering to prevent damage from occurring
- Friction dampener on monitor lid provides support and dampening, and slows the lowering of the lid, keeping hands and fingers safe
- Swivel VESA mount brackets works with standard 75mm and 100mm VESA monitor mounts (4mm mounting screws not included)
- Cord channel conveniently keeps computer wires and cables out of the way, and is wide enough to accept most power strips
- Large, 4" side-panel cord management grommets create a continuous cord channel when desks are placed side-by-side
- Adjustable CPU sling with heavy-duty adjustable straps for CPU storage (8.5"W x 18"D x 18"H)
- Superior cord management and wire loom protects wires and cables between monitor and power strip
- Removable rear security panel provides security and easy-access to cables and equipment (secured with 4mm JC bolts and hex wrench)
- Scratch and impact-resistant, high-pressure laminate worksurfaces (1.063" worksurface, .8125" monitor lid)
- Ergonomic, bullnose front edge is easy on wrists
- Quick-connect unit-to-unit brackets allow desks to be connected together
- All wires are protected from student-access by an enclosed metal compartment to prevent tampering-insuring valuable classroom instruction time
- Warranted to be free of all defects in materials and workmanship with a 10-year warranty (1-year on pneumatic lift cylinder)

Color Options

Standard laminate / color combinations

Wild Cherry / Black (CHB)



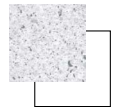
Indigo Organix / Black (IB)



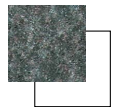
Fusion Maple / Black (FMB)



White Fiesta / Cool White (WFCW)



Indigo Organix / Cool White (ICW)



Standard color combination refers to the quickest deliverable product color combination. Custom laminates and color combinations are available-additional lead-times and up-charges may apply. Call 1-800-235-1262 for further information.

Construction

- The worksurface is constructed from 1.063" thick NAUF (No Added Urea Formaldehyde) composite board with .030" high-pressure laminate, and a balancing phenolic backer on the bottom side. The left and right edges are finished with 3mm vinyl edge-band.
- The monitor compartment lid worksurface is constructed from .75" thick industrial-grade composite board with .030" high-pressure laminate on both sides-all edges are finished with 3mm vinyl edge-band
- Welded, 16-gauge 1" x 2" rectangular steel tube legs
- Upper leg panel, 14 gauge
- All metal components are finished with a scratch-resistant powder coat epoxy paint
- Each Flex Insight XMS Desk is factory-assembled, packaged and shipped on its own skid

Specifications

Lift mechanism	manually-actuated with pneumatic spring-assist
Lift capacity	14-32 lbs (factory preset)
Maximum monitor size	most monitors up to 19" with 16:9 aspect ratio (qty: 2) <i>monitor base must be removed</i>
Lower wiring tray for power cords and power strips	38"W x 9.375"D x 3.875"H
Lower wiring tray power cutouts	5"W x 3.125"D (2 per tray)
CPU sling capacity	8.5"W x 18"D x 18"H
ADA-compliance*	knee clearances: 38.625"W x 19"D x 28"H (1 person per desk) <small>*Minimum ADA guidelines for knee clearances are 30"W x 19"D x 27"H</small>



Counterbalance

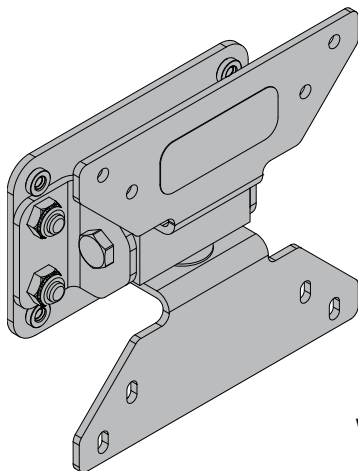


Monitor Counterbalance Kit
(for lighter monitors)
kit includes two 2.5 lb weights
38965

Nominal weight of both monitors	Counterbalance
14-17 lbs	use 4 weights (requires 2 kits)
17-20 lbs	use 3 weights (requires 2 kits)
20-24 lbs	use 2 weights
24-27 lbs	use 1 weight
27-32 lbs	not required

Unit weight (nominal)	135 lbs
Shipping weight (nominal)	172 lbs
Meets or exceeds applicable ANSI-BIFMA test standards	

Specifications subject to change without notice



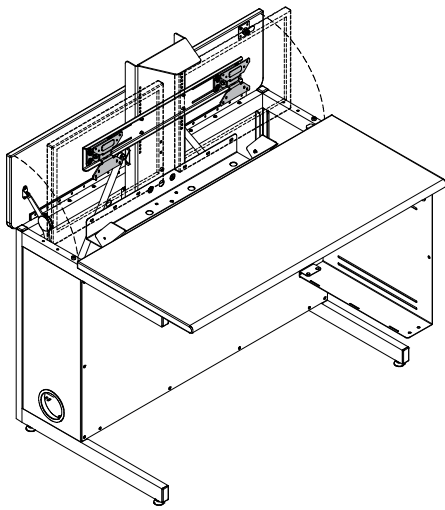
Standard Swivel VESA Monitor Mount with internal travel stops
(two included with mounting screws)

provides 4-direction tilt
(4° left and right, 16° up, and 6° down)
Works with 75mm and 100mm VESA monitor mounts
(4mm monitor mounting screws not included)

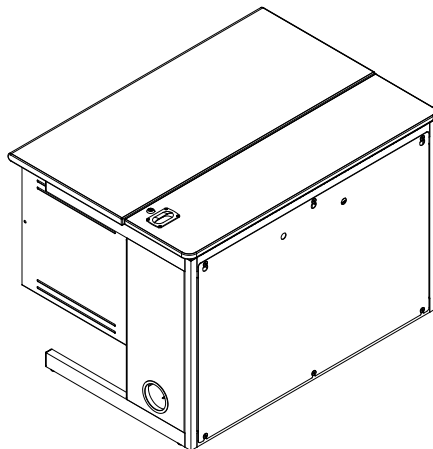
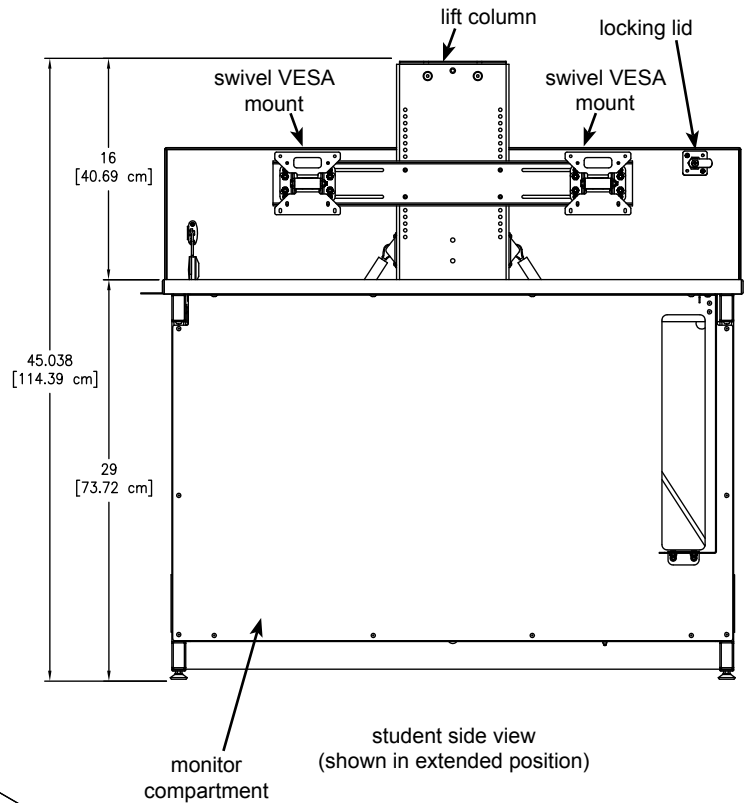
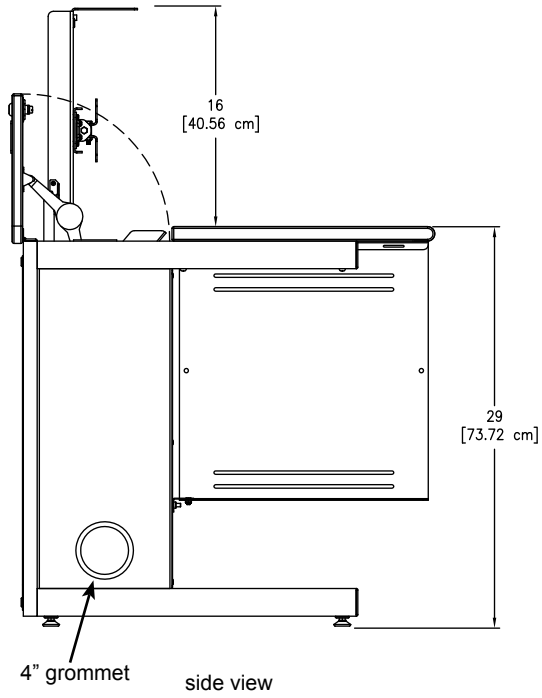
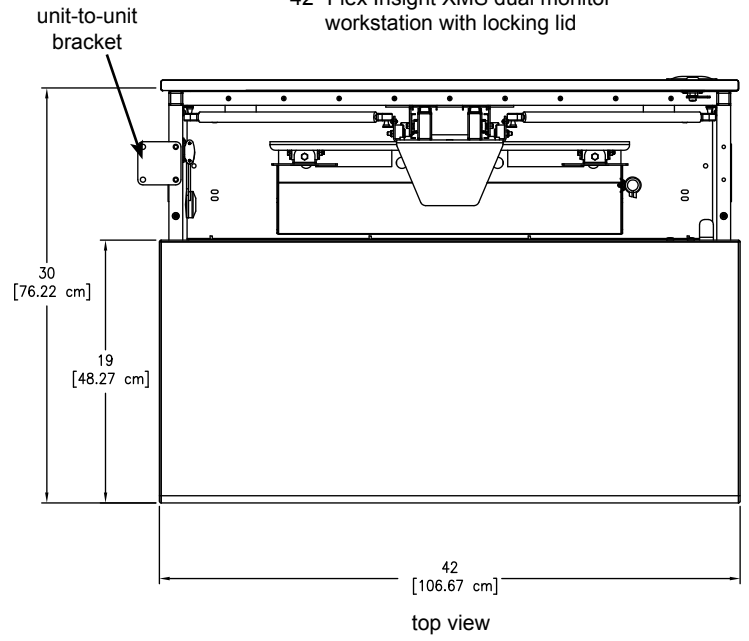
Note: Specific monitor size, shape, and mounting location will determine exact angles of tilt.

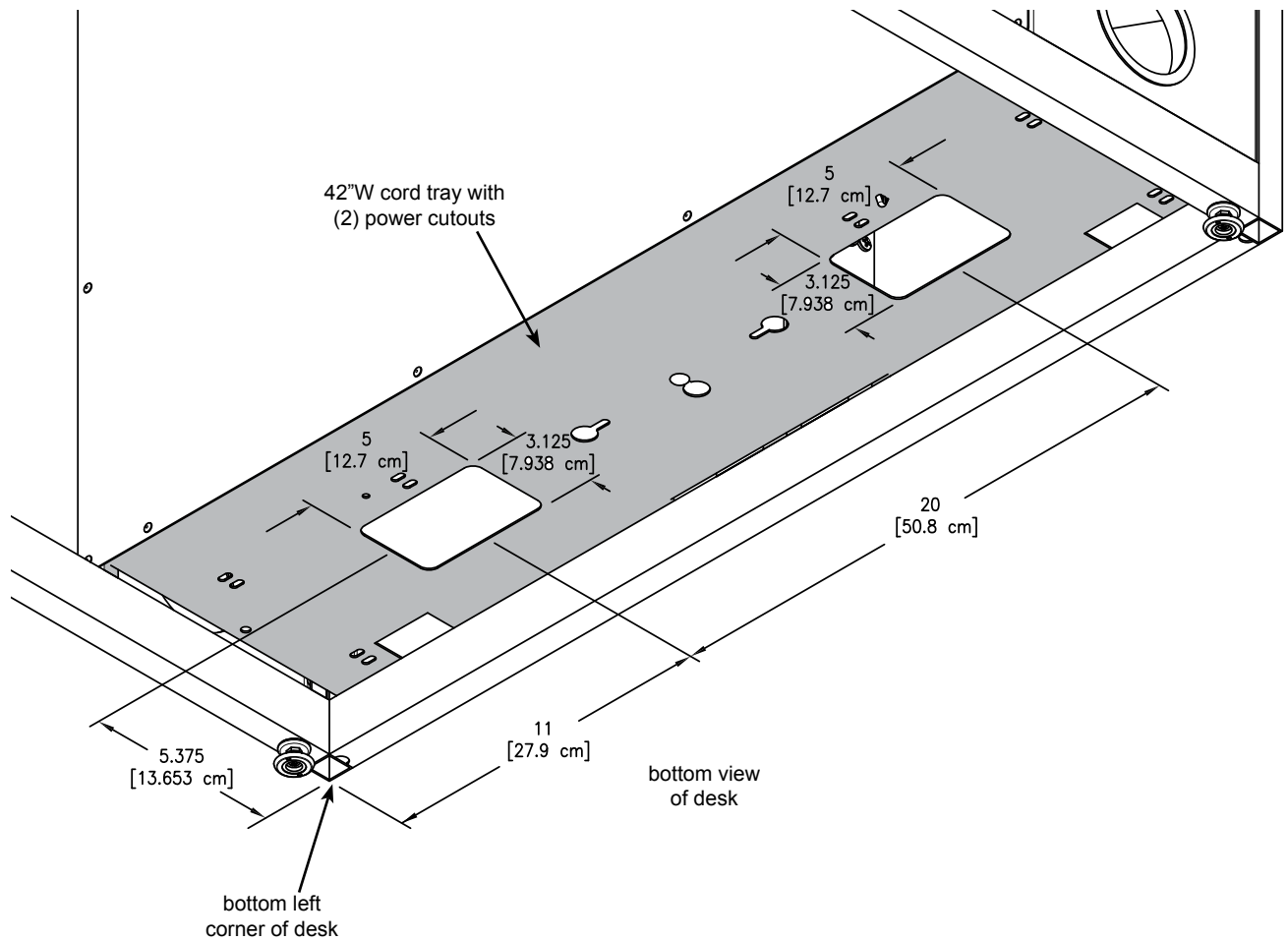
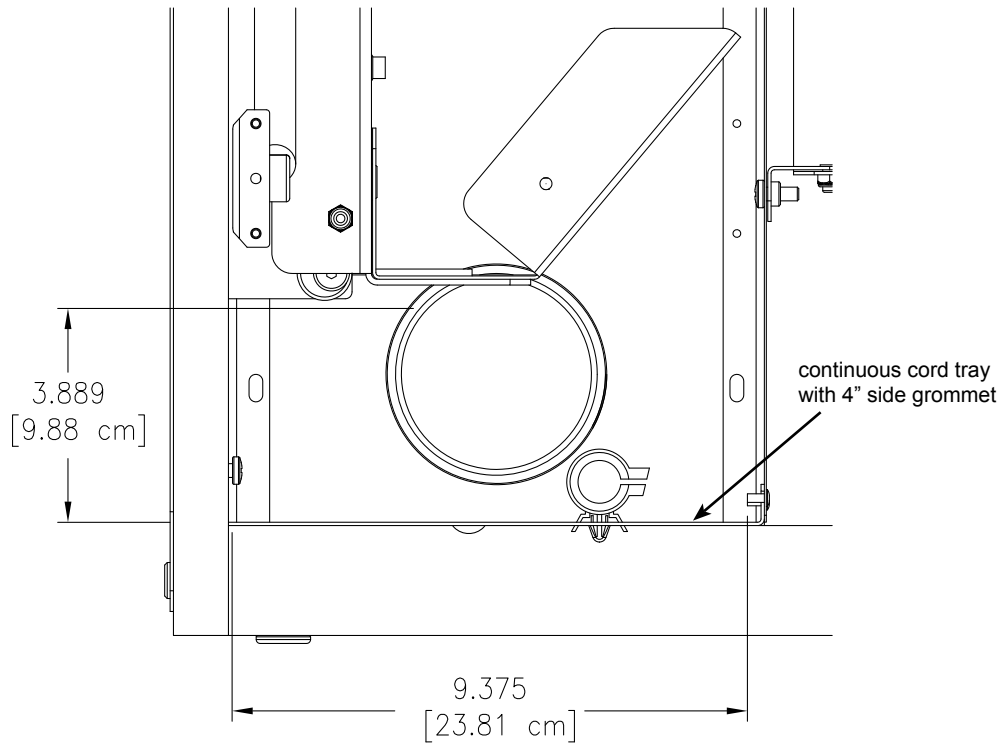
Includes:

- (2) Swivel VESA monitor mounts with mounting screws
- Deluxe internal heavy-duty metal keyboard / mouse tray
- 4mm hex wrench for instructor-access
- Two keys are included with each lock (locking desks only)
- Wire loom for keyboard, mouse, and monitor cables protect cables from pinching
- Rubber keyboard tray pads (protect keyboard)
- One unit-to-unit bracket (desks must be same height to connect)

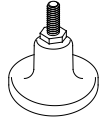


42" Flex Insight XMS dual monitor workstation with locking lid





Options



1" Bell Glide Riser Kit
raises worksurface height from 29" to 30"
5/16-18 thread (set of 4)
98513



Monitor Counterbalance Kit
(for lighter monitors)
kit includes (2) 2.5 lb weights
38965

Nominal weight of both monitors	Counterbalance
14-17 lbs	use 4 weights (requires 2 kits)
17-20 lbs	use 3 weights (requires 2 kits)
20-24 lbs	use 2 weights
24-27 lbs	use 1 weight
27-32 lbs	not required

Warranty

WE WILL MAKE IT RIGHT FOR YOU!

Spectrum is committed to provide complete customer satisfaction. Each of our products is manufactured from the best materials available and each product is stringently monitored throughout the production process through our P.A.C.E. program (Product Assurance to meet Customer Expectations).

We expressly warrant that Spectrum products will be of good quality and workmanship and free from defect for the period set out in the warranty table below from the date of delivery. This warranty shall not apply to defects or damage resulting from misuse, abuse, neglect, improper care, modification or repair not authorized by Spectrum, or any other cause outside the control of Spectrum. Spectrum will, at its sole option, either repair or replace the defective product.

This warranty is exclusive; no other warranty, written or oral, is expressed or implied. This warranty is given by Spectrum to Buyer and to no other person or legal entity. No Spectrum dealer, distributor, agent or employee is authorized to make any modification or addition to this warranty.

NOTWITHSTANDING ANYTHING TO THE CONTRARY, SPECTRUM WILL NOT UNDER ANY CIRCUMSTANCES BE LIABLE FOR INDIRECT OR LIQUIDATED DAMAGES, INCLUDING CONSEQUENTIAL, INCIDENTAL AND SPECIAL DAMAGES. IN NO EVENT SHALL SPECTRUM'S LIABILITY, WHETHER UNDER CONTRACT OR WARRANTY, IN TORT OR OTHERWISE, EXCEED THE PURCHASE PRICE RECEIVED BY SPECTRUM FOR THE PRODUCT AT ISSUE AND "RECALL ACTION" EXPENSES. SPECTRUM SHALL NOT BE SUBJECT TO ANY OTHER OBLIGATIONS OR LIABILITIES, WHETHER ARISING OUT OF BREACH OF CONTRACT, WARRANTY, TORT (INCLUDING NEGLIGENCE AND STRICT LIABILITY) OR OTHER THEORIES OF LAW, WITH RESPECT TO PRODUCTS SOLD OR SERVICES RENDERED BY SPECTRUM, OR ANY UNDERTAKINGS, ACTS OR OMISSIONS RELATING THERETO.

Our Customer Service Department is ready to provide immediate attention to any questions, comments or concerns. They are available to answer your calls Monday through Friday from 7 am to 5 pm CST. In addition your product comments or concerns are welcome via e-mail at: spectrum@spectrumfurniture.com.

Warranty Table

Item	Warranty Period
• Adjustable Crank/Electric Desk Legs	• 1 Year
• Flat Panel Desk Gas Cylinders	
• Adjustable Height Chair Parts – including frames, gas cylinders, wood and plastic parts, and control handles Adjustable Height Chair Parts Casters	• 7 Years
• Adjustable Height Chair Upholstery	• 2 Years
• In-Stock Upholstery	• 2 Years
• Graded-In Fabrics and Customer Owned Material	• No Warranty
• Height Adjustable Columns and Lifts	• 1 Year
• General Use Casters	
• Electrical	
• Keyboard/Mouse Trays	
• Flat Panel Monitor Arm – General Parts	• 5 Years
• Flat Panel Monitor Arm – Gas Cylinders	• 2 Years
• Computer Desk Chassis	• 10 Years
• Cart Chassis	
• Lectern Chassis	



INDOOR ADVANTAGE GOLD FURNITURE

