

ADJUSTABLE HEIGHT LECTERN

NEW

Freedom One Sit-to-Stand Lectern™



Is there one
perfect height
for a lectern?

For a classroom used by many instructors, a variety of heights is required to meet ergonomic needs, and ADA compliance is a must.

The truth is,
there is one lectern
that delivers the
ergonomic setting
you need

Healthy Choices

Adaptable

- Adjustable-height workstation easily adjusts between seated or standing-use heights
- ADA-compliant workstation
- Both lectern and equipment rack are available as a stand alone unit
- Assemble with the lectern on the left or right side of the equipment rack

Sit to Stand Benefits

- Tall or short, sitting or standing, fit all instructors with just one lectern
- Sit-to-stand activity promotes blood circulation; potentially more oxygen gets to the brain
- To stand, you have to tense your leg muscles, and engage the muscles of your back and shoulders
- You burn 60 more calories an hour when standing versus sitting

Simply Functional

- Use the lectern as a stand-alone workstation
- Connect the lectern to the equipment rack and deploy a fully integrated lectern
- Balanced lift mechanism can be easy to use, even one handed
- Smart design with very few moving parts keeps things simple

Easy Equipment Management

- Equipment rack with audience-side and optional instructor-side locking doors simplifies integration and helps protect your valuable equipment
- Equipment rack features front and rear rack rail to manage all of your multimedia equipment
- Ventilation provides "chimney effect" airflow keeping equipment cool

POPULAR OPTIONS

- 1 97503 **RACK MOUNT PULL-OUT SHELF**
Useful 80-lb capacity pull-out shelf for quick access (3RU)
- 2 97523 **LOCKING RACK MOUNT DRAWER**
A handy place to store AV controllers and teaching aids, 50-lb capacity (2RU)
- 3 97513 **RACK MOUNT BLANK**
Eliminate gaps between rack mount equipment (4RU)
- 4 99021 **9-OUTLET RACK MOUNT POWER STRIP**
The power hub for all your rack equipment
- 5 55356 **FREEDOM ONE KEYBOARD TRAY**
Convenient slide-out tray
- 6 68152 **36"H SOLID LOCKING DOOR**
68153 **36"H CLEAR ACRYLIC LOCKING DOOR**
Doors can be mounted to be hinged from the left or right side. Available in black or silver sparkle
- 7 68204 **FLIP-UP SHELF**
Handy shelf adds worksurface when needed. (Cannot be used with stand-alone equipment rack.)



55355 FMBTW
(includes 55366,
55367, 55368)



68153 B



7

55368 FMSTW

55366 FMSTW



THE LECTERN AND EQUIPMENT RACK CAN BE BOLTED TOGETHER
OR USED SEPARATELY, PROVIDING MORE LAYOUT POSSIBILITIES

See full specs at www.spectrumfurniture.com.

DESIGN SPECS

WORKSTATION 34"W x 30"D x 30" - 42"H - casters (TW)
34"W x 30"D x 29¹/₄" - 41¹/₄"H - glides (G)

EQUIPMENT RACK 21"W x 30"D x 39⁵/₃₂"H - casters

RACK UNITS 18 rack units

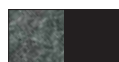
COLORS Standard color combinations



Wild Cherry
& Black (CHB)



Fusion Maple
& Black (FMB)



Indigo Organix
& Black (IB)



Indigo Organix &
Silver Sparkle (IS)



Fusion Maple &
Silver Sparkle (FMS)

AVAILABLE MODELS

- | | |
|---------------|--|
| 55355 TW or G | Freedom One Lectern (Includes lectern, equipment rack, and unit-to-unit connector kit) |
| 55368 TW or G | Freedom One STS Lectern |
| 55367 | Freedom One Unit to Unit Kit |
| 55366 TW or G | Freedom One Equipment Rack |

Note: 55366 and 55368 ship with both twin wheel casters and glides