

NEW

InVision Element™ Table



Bring your
best ideas
to the table

Ideal for corporate and
educational settings

Collaborate
in Comfort

A productivity
hub where small
groups work
together more
effectively

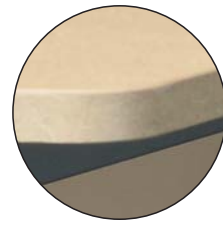
NEW
JULY
2015!



TABLE WIDTH IDEAL
FOR SMALL SPACES



COVE™ PROVIDES EASY
POWER ACCESS FOR DEVICES



1" LAMINATE WITH
MATCHING EDGE BAND



37128

InVision Element™ Table

PRODUCT DIMENSIONS

WIDTH	42"W
LENGTH	60", 72", 96"
HEIGHT	27", 30", 42"

OPTIONS (WHEN ORDERING SEPARATELY)

37130	DISPLAY STAND
99044	COVE™ POWER MODULE (BLACK OR SILVER)

WARRANTY

10-year

Touchboards

205 Westwood Ave, Long Branch, NJ 07740
Phone: 866-94 BOARDS (26273) / (732)-222-1511
Fax: (732)-222-7088 | E-mail: sales@touchboards.com



(pending)

NOW AVAILABLE WITH NEW LAMINATE COLOR CHOICES!

Easy Equipment Management

- 7" wide wiring channel supports most power and communication modules
- Wiring channel extends to end of table
- Optional affordable display stand holds up to 100 pounds

Modular Choices

- Available in 27", 30", and 42" heights
- Two leg styles to choose from: designer T-leg or post leg
- Available in 60", 72", and 96" table lengths

Convenience and Function

- One-piece worksurface made with 1" high-pressure laminate makes this one of the most durable tables in the industry
- Optional Cove™ Power Module seamlessly integrates power and USB charging ports

Designed for Connection

- Individuals become team players in a collaborative environment
- Simple, elegant, and clean design promotes concentration and communication



Build Your Perfect Table

Questions?
Please contact Spectrum customer service today!
800-235-1262



Simply follow each step below to generate your InVision Element Table Product Order Number.
Record the letter or number code from each step in the corresponding boxes in this order generating chart.

INVISION ELEMENT TABLE	1 LAMINATE	EDGE COLOR	2 METAL FINISH	3 LEG	4 WORKSURFACE	5 STAND	6 # COVES	7 COVE COLOR	8 CUTOUT
3 7 1 2 8									

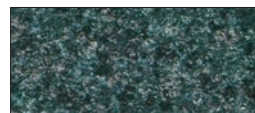
1 Choose Your Laminate and Edge Band Color

STANDARD LAMINATE EXPRESSIONS



Fusion Maple
with matching Edge Band

ORDER CODE **FM FM**



Indigo Organix
with Black Edge Band

ORDER CODE **IO BK**



Wild Cherry
with matching Edge Band

ORDER CODE **CH CH**

ADDITIONAL DESIGNER LAMINATE EXPRESSIONS



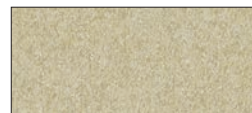
Black
with matching Edge Band

ORDER CODE **BK BK**



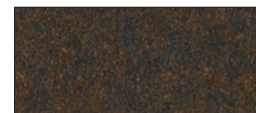
Bronze Legacy
with matching Edge Band

ORDER CODE **BL BL**



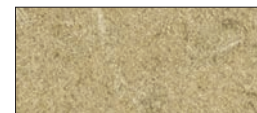
Desert Zephyr
with matching Edge Band

ORDER CODE **DZ DZ**



Morro Zephyr
with matching Edge Band

ORDER CODE **MO MO**



Natural Tigris
with matching Edge Band

ORDER CODE **NT NT**



Misted Zephyr
with Silver North Sea Edge Band

ORDER CODE **MZ SN**



Pewter Mesh
with matching Edge Band

ORDER CODE **PM PM**



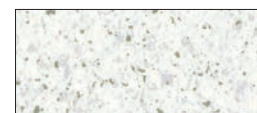
Steel Mesh
with matching Edge Band

ORDER CODE **SM SM**



Twilight Zephyr
with matching Edge Band

ORDER CODE **TZ TZ**



White Fiesta
with Black Edge Band

ORDER CODE **WF BK**



Castle Oak
with matching Edge Band

ORDER CODE **CK CK**



Colombian Walnut
with matching Edge Band

ORDER CODE **CW CW**



Empire Mahogany
with matching Edge Band

ORDER CODE **EM EM**

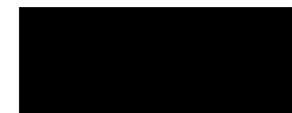


Nepal Teak
with matching Edge Band

ORDER CODE **NP NP**

2 Choose Your Metal Finish

STANDARD METAL COLOR EXPRESSIONS



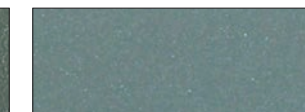
ORDER CODE **B**
Black



ORDER CODE **CM**
Champagne Metallic



ORDER CODE **D**
Dark Gray



ORDER CODE **S**
Silver Sparkle

3 Choose Your Leg Option (MATCHES METAL COLOR)



ORDER CODE **T1**
T-Legs 27"H

ORDER CODE **T2**
T-Legs 30"H

ORDER CODE **T3**
T-Legs 42"H



ORDER CODE **P1**
Post Legs 27"H

ORDER CODE **P2**
Post Legs 30"H

ORDER CODE **P3**
Post Legs 42"H

4 Choose Your Worksurface

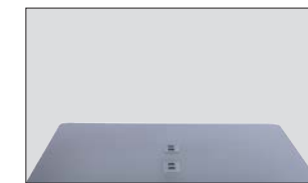


ORDER CODE **1**
60" x 42"

ORDER CODE **2**
72" x 42"

ORDER CODE **3**
96" x 42"

5 Choose Your Display Stand (MATCHES METAL COLOR)



ORDER CODE **0**
No Display Stand



ORDER CODE **1**
Display Stand

6 Number of Cove™ Power Modules

ORDER CODE **0**
No Cove™ Power Module



ORDER CODE **1**
One Cove™ Power Module (centered)



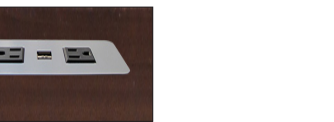
ORDER CODE **2**
Two Cove™ Power Modules (centered)

7 Choose Your Cove™ Power Module Color

ORDER CODE **0**
No Cove™ Power Modules



ORDER CODE **B**
Black Cove



ORDER CODE **S**
Silver Cove

8 Choose Your Custom Cutout

ORDER CODE **0**
No Custom Cutouts

ORDER CODE **1**
Custom Cutouts (will increase lead time and additional charges will apply)