

ASSEMBLY INSTRUCTIONS

Steve's Station™ Advanced and Deluxe

Touchboards

205 Westwood Ave, Long Branch, NJ 07740
Phone: 866-94 BOARDS (26273) / (732)-222-1511
Fax: (732)-222-7088 | E-mail: sales@touchboards.com



Steve's Station Deluxe
Shown in 2+1 configuration with CPU SideRack, Floor-mount



Anthro Corporation® | 10450 SW Manhasset Dr. | Tualatin, OR 97062
Toll-free: 800.325.3841 | Fax: 800.325.0045 | email: sales@anthro.com | anthro.com
Outside the U.S. | Tel: 503.691.2556 | Fax: 503.691.2409

Rev E, November 2014

GETTING STARTED

WELCOME

Thank you for purchasing Steve's Station!

If you have any questions or if we can help you in any way, please contact us at 800.325.3841.

TOOLS

These tools are required (but not provided) for assembly:

- Box Knife 1/2" Socket
- Ratchet 7/16" Socket
- Socket Extension Spirit Level
- Wire Snips 3/8" Wrench or Adj Wrench
- Four-wheel furniture dollies (2 ea)

KIT

The following tools, hardware, and components are provided in the kit, part #825-5624-00:

- 5/32" Hex Anthro Driver
- 3/16" Hex Looped T-handle
- 3/4" Glide Wrench
- 10-ft USB Cable (2 ea)
- #10-32x1/2" Socket-head Cap Screw (2 ea)
- M6x14 Flat-head Screw (4 ea)
- USB Cable 10-ft for your keyboard & mouse (2 ea)

PARTS LIST

Before beginning installation of your Steve's Station table, check that you've received the proper kits. Contents for each kit are listed in the assembly step where they're used.

Product - STA-SERIES TABLES		Part #	Qty
STA160GV/xx	STEVSTN ADV SINGLE 60W		
	SS. ADVANCE AND DELUXE KIT*	825-5624-00	1
	MONITOR BOOM UPPER ASSEMBLY	835-5426-03	1
	UPPER CABLE CARRIER	835-5475-03	1
	LOWER CABLE CARRIER	835-5465-61	1
STA172GV/xx	STEVSTN ADV SINGLE 72W		
	SS. ADVANCE AND DELUXE KIT*	825-5624-00	1
	MONITOR BOOM UPPER ASSEMBLY	835-5426-03	1
	UPPER CABLE CARRIER	835-5475-03	1
	LOWER CABLE CARRIER	835-5465-61	1

STA260GV/xx	STEVSTN ADV DUAL 60W		
	SS. ADVANCE AND DELUXE KIT*	825-5624-00	1
	MONITOR BOOM UPPER ASSEMBLY	835-5426-03	1
	UPPER CABLE CARRIER	835-5475-03	1
	LOWER CABLE CARRIER	835-5465-61	1

STA272GV/xx	STEVSTN ADV DUAL 72W		
	SS. ADVANCE AND DELUXE KIT*	825-5624-00	1
	MONITOR BOOM UPPER ASSEMBLY	835-5426-03	1
	UPPER CABLE CARRIER	835-5475-03	1
	LOWER CABLE CARRIER	835-5465-61	1

Product - STD-SERIES TABLES		Part #	Qty
STD160GV/xx	STEVSTN DLX SINGLE 60W		
	SS. ADVANCE AND DELUXE KIT*	825-5624-00	1
	SS. 60W DELUXE SCREEN KIT	835-5491-00	1
	MONITOR BOOM UPPER ASSEMBLY	835-5426-03	1
	UPPER CABLE CARRIER	835-5475-03	1
	LOWER CABLE CARRIER	835-5465-61	1
STD172GV/xx	STEVSTN DLX SINGLE 72W		
	SS. ADVANCE AND DELUXE KIT*	825-5624-00	1
	SS. 72W DELUXE SCREEN KIT	835-5492-00	1
	MONITOR BOOM UPPER ASSEMBLY	835-5426-03	1
	UPPER CABLE CARRIER	835-5475-03	1
	LOWER CABLE CARRIER	835-5465-61	1
STD260GV/xx	STEVSTN DLX DUAL 60W		
	SS. ADVANCE AND DELUXE KIT*	825-5624-00	1
	SS. 60W DELUXE SCREEN KIT	835-5491-00	1
	MONITOR BOOM UPPER ASSEMBLY	835-5426-03	1
	UPPER CABLE CARRIER	835-5475-03	1
	LOWER CABLE CARRIER	835-5465-61	1
STD272GV/xx	STEVSTN DLX DUAL 72W		
	SS. ADVANCE AND DELUXE KIT*	825-5624-00	1
	SS. 72W DELUXE SCREEN KIT	835-5492-00	1
	MONITOR BOOM UPPER ASSEMBLY	835-5426-03	1
	UPPER CABLE CARRIER	835-5475-03	1
	LOWER CABLE CARRIER	835-5465-61	1

Product - STE-SERIES TABLES		Part #	Qty
STE160GV/xx	STEVSTN ADV-SCREEN SINGLE 60W		
	SS. ADVANCE AND DELUXE KIT*	825-5624-00	1
	MONITOR BOOM UPPER ASSEMBLY	835-5426-03	1
	UPPER CABLE CARRIER	835-5475-03	1
	LOWER CABLE CARRIER	835-5465-61	1
	SS 60W ADV SCREEN KIT	835-5534-00	1
STE172GV/xx	STEVSTN ADV-SCREEN SINGLE 72W		
	SS. ADVANCE AND DELUXE KIT*	825-5624-00	1
	MONITOR BOOM UPPER ASSEMBLY	835-5426-03	1
	UPPER CABLE CARRIER	835-5475-03	1
	LOWER CABLE CARRIER	835-5465-61	1
	SS 72W ADV SCREEN KIT	835-5535-00	1
STE260GV/xx	STEVSTN ADV-SCREEN DUAL 60W		
	SS. ADVANCE AND DELUXE KIT*	825-5624-00	1
	MONITOR BOOM UPPER ASSEMBLY	835-5426-03	1
	UPPER CABLE CARRIER	835-5475-03	1
	LOWER CABLE CARRIER	835-5465-61	1
	SS 60W ADV SCREEN KIT	835-5534-00	1
STE272GV/xx	STEVSTN ADV-SCREEN DUAL 72W		
	SS. ADVANCE AND DELUXE KIT*	825-5624-00	1
	MONITOR BOOM UPPER ASSEMBLY	835-5426-03	1
	UPPER CABLE CARRIER	835-5475-03	1
	LOWER CABLE CARRIER	835-5465-61	1
	SS 72W ADV SCREEN KIT	835-5535-00	1

PARTS LIST, CONT

Product – STL–SERIES TABLES	Part #	Qty
STL160GV/xx STEVESTN DLX -LIGHT ONLY SINGLE 60W		
SS. ADVANCE AND DELUXE KIT*	825-5624-00	1
MONITOR BOOM UPPER ASSEMBLY	835-5426-03	1
UPPER CABLE CARRIER	835-5475-03	1
LOWER CABLE CARRIER	835-5465-61	1
SS AMBIENT LIGHT ASSEMBLY	835-5517-00	1
STL172GV/xx STEVESTN DLX-LIGHT ONLY SINGLE 72W		
SS. ADVANCE AND DELUXE KIT*	825-5624-00	1
MONITOR BOOM UPPER ASSEMBLY	835-5426-03	1
UPPER CABLE CARRIER	835-5475-03	1
LOWER CABLE CARRIER	835-5465-61	1
SS AMBIENT LIGHT ASSEMBLY	835-5517-00	1
STL260GV/xx STEVESTN DLX -LIGHT ONLY DUAL 60W		
SS. ADVANCE AND DELUXE KIT*	825-5624-00	1
MONITOR BOOM UPPER ASSEMBLY	835-5426-03	1
UPPER CABLE CARRIER	835-5475-03	1
LOWER CABLE CARRIER	835-5465-61	1
SS AMBIENT LIGHT ASSEMBLY	835-5517-00	1
STL272GV/xx STEVESTN DLX-LIGHT ONLY DUAL 72W		
SS. ADVANCE AND DELUXE KIT*	825-5624-00	1
MONITOR BOOM UPPER ASSEMBLY	835-5426-03	1
UPPER CABLE CARRIER	835-5475-03	1
LOWER CABLE CARRIER	835-5465-61	1
SS AMBIENT LIGHT ASSEMBLY	835-5517-00	1

Product	Part #	Qty
STP160GV/xx STEVESTN ADV-SIT/STAND SINGLE 60W		
LOWER CABLE CARRIER	835-5465-61	1
ANTHRO DRIVER and GLIDE WRENCH		1
STP172GV/xx STEVESTN ADV-SIT/STAND SINGLE 72W		
LOWER CABLE CARRIER	835-5465-61	1
ANTHRO DRIVER and GLIDE WRENCH		1
STP260GV/xx STEVESTN ADV-SIT/STAND DUAL 60W		
LOWER CABLE CARRIER	835-5465-61	1
ANTHRO DRIVER and GLIDE WRENCH		1
STP272GV/xx STEVESTN ADV-SIT/STAND DUAL 72W		
LOWER CABLE CARRIER	835-5465-61	1
ANTHRO DRIVER and GLIDE WRENCH		1
STQ160GV/xx STEVESTN DLX-SIT/STAND SINGLE 60W		
SS. 60W DELUXE SCREEN KIT	835-5491-00	1
LOWER CABLE CARRIER	835-5465-61	1
ANTHRO DRIVER and GLIDE WRENCH		1
STQ172GV/xx STEVESTN DLX-SIT/STAND SINGLE 72W		
SS. 72W DELUXE SCREEN KIT	835-5492-00	1
LOWER CABLE CARRIER	835-5465-61	1
ANTHRO DRIVER and GLIDE WRENCH		1
STQ260GV/xx STEVESTN DLX-SIT/STAND DUAL 60W		
SS. 60W DELUXE SCREEN KIT	835-5491-00	1
LOWER CABLE CARRIER	835-5465-61	1
ANTHRO DRIVER and GLIDE WRENCH		1
STQ272GV/xx STEVESTN DLX-SIT/STAND DUAL 72W		
SS. 72W DELUXE SCREEN KIT	835-5492-00	1
LOWER CABLE CARRIER	835-5465-61	1
ANTHRO DRIVER and GLIDE WRENCH		1

STEP 1 – UNPACK

- Make sure you have enough space around the pallet to work. Allow about 8ft x 10ft plus space to stage accessories.
- Cut the strapping that secures the box to the pallet and remove the box.
- Remove and inventory the parts boxes inside using the Parts List on page 2 and above.
- Using the 1/2" socket and ratchet, remove the four 5/16" hex bolts securing the table to the pallet. One in each of the two black stabilizer brackets against the worksurface and one in each of the triangular hand-holds in the wood braces.
- Flatten the side of the cardboard tray nearest the table's worksurface. Roll your two furniture dollies up to the pallet and tuck the side of the tray under the edge of your dollies.
- With one or two people on each end of the table, use the hand-holds on the wood lifting frame to lift the table onto the dollies. Tables weigh as much as 450 lbs. Make sure you have enough people to safely perform this lift!
- Carefully move the table and its parts boxes to the installation destination.



STEP 2

ONCE YOU'RE IN THE ROOM

- Determine the location and orientation of the assembled table.
- Roll the table into place. Leave about two feet behind the table so you have room to move during assembly.
- With one or two people on each end of the table, use the hand-holds on the wood lifting frame to lift the table off the dollies and to the floor.
- If you have casters for the table, install them now. First, unscrew the feet that the table. If a foot is hard to turn by hand, use the Glide Wrench provided. Next, install a washer over each caster's threaded stem and install the casters.
- Using the hand-holds on the wood lifting frame, rotate the table onto its feet.
- Locate the kit box #825-5624-00 and find a 5/32" hex Anthro driver. Using that driver, remove the two screws securing the wood lifting frame to the table bracket (one screw per bracket).
- Slide each wood lifting frame away from the table and set aside. These frames and the black table brackets (which you'll remove later) can be returned to Anthro for re-use in the labeled, pre-paid return shipment box provided.
- Remove and discard the protective foam next to the bracket.



STEP 3

CONNECT THE POWER

- Open the rear door on the table and remove the power cable. Your table may have shipped with tape holding the door closed during transit; remove and discard the tape.
- Route the cable through the end of the cable enclosure and plug in the table. Check that the power strip is switched on and that connections on the Control Box are secure.
- From the front of the table, use the control buttons to move the table up to a comfortable working height.
- At the rear of the table, remove the black steel lifting brackets from the table frame using the Anthro driver. Return those to Anthro in the return box.

For STP-series and STQ-series tables, skip ahead to Step 6, Install the Lower Cable Carrier.



STEP 4

INSTALL THE MONITOR BOOM

- Locate the box containing the monitor boom assembly (part #835-5426-00) and inventory its contents. It should contain:
 - 1 ea Monitor Boom assembly with 33"-long center boom.
 - 1 ea Monitor Face Plate.
 - 4 ea M6x14 socket-head cap screws (325-5435-00)
 - 2 ea 10-32x1/2" socket-head cap screws (325-5455-00)
- Locate the zip tie holding the small metal plate to the base of the Monitor Easy Track. Using the wire cutters, clip and remove the zip tie.
- From the back of the table, align the monitor boom assembly with the base so the slots on the boom face the back and two holes on each side of the assembly align with the base. Loosely attach the left side of the assembly (your left) to the base using two ea 325-5435-00 screws.
- On the right side, align the monitor boom assembly with the base and the small metal plate. Poke the Anthro driver through the top holes to hold the parts in alignment while you finger-tighten one 325-5435-00 screw through the bottom set of holes. Remove the Anthro driver and use it to loosely install one 325-5435-00 screw through the top set of holes.
- Check that the monitor boom is level. From the back of the table, use the provided 3/16" hex T-handle to adjust the level of the boom through the opening on the top of the base. Use the Anthro driver to tighten the screws on the side of the monitor boom assembly.
- Align the Monitor Face Plate with the front of the base so the holes on the plate align with threaded holes on the front of the base and the slots at the top of the cover slide over the uprights on the boom assembly. Loosely attach with two 325-5455-00 screws, then adjust the plate so that it's level with the base and tighten the screws.
- Slide the Monitor Easy Track to the middle of its range by squeezing the grip at the front of the track and pulling it toward you.



STEP 5

INSTALL THE UPPER CABLE CARRIER

- Locate the Upper Cable Carrier assembly (part #835-5475-03) and inventory its contents. It should contain:
 - 1 ea 835-5475-03 Upper Cable Carrier
 - 2 ea 10-24 X 1/2 BHS THRD FORM SCREW*BK* (325-5464-00)
- Using the Anthro driver, remove the 3/4" button-head cap screw securing the hinge plate to the carrier so the plate swings freely. Set aside the screw.
- With the hinge plate completely open, position the cable carrier over the center of the boom so the hooks on the carrier rest on top of the boom. Fold the plate under the boom and reattach the plate to the carrier with the 3/4" button-head cap screw.
- Open the door to the cable enclosure. Align the bottom of the cable carrier with the row of holes at the top of the cable enclosure. Make sure that the cable carrier is straight up and down, then attach the carrier to the row of holes at the top of the cable enclosure using two 10-24 x 1/2" button-head thread-forming screws (325-5464-00).
- Move the Monitor Easy Track forward and back, watching the cable carrier to make sure it moves smoothly and doesn't bind.
- The cable carrier can be repositioned after displays are installed on the table. Just reverse these steps to remove the carrier, select its new position, and reinstall.



STEP 6

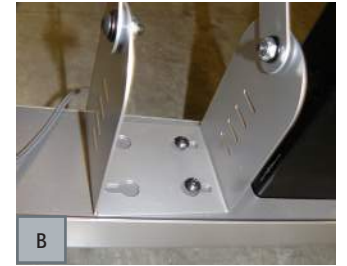
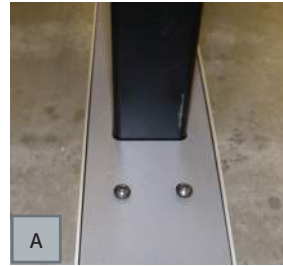
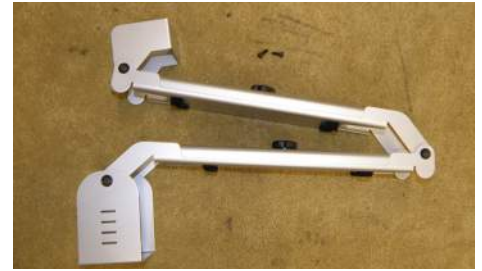
INSTALL THE LOWER CABLE CARRIER

- Locate the Cable Carrier assembly (part #835-5465-61) and inventory its contents. It should contain:
 - 1 ea Cable Carrier 835-5465-61
 - 2 ea 10-24x1/2" socket-head cap screws (325-5598-00)
- Determine which side of the table will receive the carrier. It should be located on the same side as your CPU Holder.
- Using the Anthro driver, loosen but do not remove the two button-head screws on the top of the foot, behind the leg. (A)
- Align the cable carrier with the table so that the hinged center of the carrier is inside the table footprint and the keyholes on the base of the carrier fit over the screw heads. Slip the base of the carrier over the screw heads, slide the carrier so that the screw heads are over the narrow end of the holes, and tighten the screws just until the base feels secure. (B - D)
- Install two 10-24x1/2" Socket-head Cap Screws (325-5598-00) into the threaded holes at the top of the cable carrier. Move the table to standing height and open the back door to the cable enclosure. Extend the cable carrier so that the screw heads at the top of the carrier slip through the keyhole slots at the end of the cable enclosure. Tighten the screws to secure the top of the carrier. (E)
- Remove the cable carrier cover trays by unscrewing the knobs. Set them aside.
- Pull the coiled audio cable and two USB cables out of the end of the cable enclosure. Raise the table to its full height, then unplug the table from the power. Feed the power cord, audio cable, and USB cables through the end of the cable enclosure and into the cable carrier. (F)
- Route the cables through the hook-and-loop fasteners at each end of the carrier, then replace the cover trays and knobs. (G)

If you have an STD-series Deluxe table, an STE-series Advanced table, or an STQ-series Deluxe table, go to STEP 7.

If you have an STL-series Deluxe Table go to STEP 9.

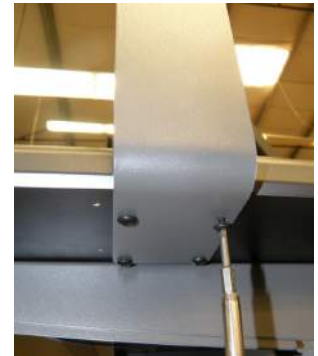
If you have an STA-series or STP-series table, your assembly is complete! Go to STEP 10 to test your table.



STEP 7

INSTALL THE SCREEN FRAMES – FOR STD-SERIES, STE-SERIES, AND STQ-SERIES TABLES

- Locate the large box containing the screen assemblies and inventory the parts (note that the last two digits in part numbers designate color and may vary):
 - STD-series and STQ-series Tables**
(60w: 835-5491-00. 72w: 835-5492-00)
 - 1 ea back frame & light assembly
(60w: 835-5478-00. 72w: 835-5477-00)
 - 2 ea side screen frames (835-5479-00)
 - 1 ea back acoustic screen, inner
(60w: 100-6665-00. 72w: 100-6667-00)
 - 1 ea back acoustic screen, outer
(60w: 100-6666-00. 72w: 100-6668-00)
 - 4 ea side acoustic barrier screens (100-6664-00)
 - 4 ea screen brackets (225-4460-00)
 - 2 ea side connectors (225-4490-00)
 - 8 ea screen clips/channel latches (225-4461-00)
 - 16 ea #10-9x1 button-head screws (325-5580-00)
 - 4 ea 1/4-20 Nylock Nuts (325-5259-00)
 - 8 ea #10-24x5/8 socket-head cap screws (325-5284-00)
 - STE-series Tables**
(60w: 835-5534-00. 72w: 835-5535-00)
 - 1 ea back screen frame
(60w: 835-5518-00. 72w: 835-5519-00)
 - 2 ea side screen frames (835-5479-00)
 - 2 ea back acoustic screens
(60w: 100-6666-44. 72w: 100-6668-00)
 - 4 ea side acoustic barrier screens (100-6664-00)
 - 4 ea screen brackets (225-4460-00)
 - 2 ea side connectors (225-4490-00)
 - 8 ea screen clips/channel latches (225-4461-00)
 - 16 ea #10-9x1 button-head screws (325-5580-00)
 - 4 ea 1/4-20 Nylock Nuts (325-5259-00)
 - 8 ea #10-24x5/8 socket-head cap screws (325-5284-00)
- Locate the four screen brackets. Attach two to each side of the table using the 10-9x1" button-head screws (325-5580-00) using the Anthro driver. Don't over-torque these screws – tighten just until they are snug.
- Locate the side screen frames and unpack. Align one frame with one side of the table so the slots in the bottom of the frame align with the top of the screen brackets and the threaded posts on the frame face the inside of the table. Slide the frame over the brackets and angle it to seat the posts into the brackets. Repeat for the other frame on the other side of the table. Secure each frame to the post with two 1/4-20 Nylock Nuts (325-5259-00).
- Open the back door of the cable enclosure. Locate the end plates on the far left and right of the enclosure. Each plate has a rectangular opening with threaded holes all around. Using the Anthro driver, loosely install four 10-24x5/8 socket-head screws (325-5284-00) on each end plate, one in each corner. Don't tighten them all the way – just a couple of turns.
- Locate the back screen frame. Using two people, remove it from the box and remove the plastic cover. Align the frame with the table so the light assembly is facing the table and the extensions on the bottom of the frame line up with the end plates on the table. Slide the keyhole openings on the extensions over the screw heads on the plates and slip into place. Tighten the screws.
- *STD-series table only:* Locate the power cord and light control cord in the back screen frame. Route them through the frame and into the cable enclosure. Connect the light control cable with the RJ45 90-degree jack in the cable enclosure. Connect the power cord to the power strip in the cable enclosure.
- Locate the corner covers. Align one corner cover with the inside corners of the back frame and a side frame so the posts on the frames line up with the slots on the corner cover. The curve on the corner should bend toward the table, not away from the table. Using your spirit level, check that the frames are plumb. Using your 7/16" socket, secure the corner cover to the table with four 1/4-20 Nylock Nuts (325-5259-00). Repeat for the remaining corner cover.



STEP 8

INSTALL THE ACOUSTIC BARRIERS – FOR STD-SERIES, STE-SERIES, AND STQ-SERIES TABLES

- *STD-series table only:* Remove the lock pins from each side of the light fixture. While one person holds the fixture, the other unscrews the outside cap on the light fixture. Set it and the plastic washer aside.
- *STD-series table only:* Remove the locking pin and set it aside. Reinstall the plastic washer and cap on each side. Rotate the light fixture up and back.
- Locate the two large acoustic screens. Each screen panel has a "right" side with grey fabric and a "wrong" side with backer. Locate the inner panel; it has a label "THIS END UP".
- From the front of the table, align the inner panel with the frame so the grey side faces you. Tip the bottom of the panel into the channel at the base of the frame and push it upright.
- Secure the panel to the frame with two panel clips. Align each clip with the notch at the top of the frame. Press the clip into the notch and slide it to the left to lock into place. Repeat for the second clip.
- Install the second back acoustic panel, then the side acoustic panels.



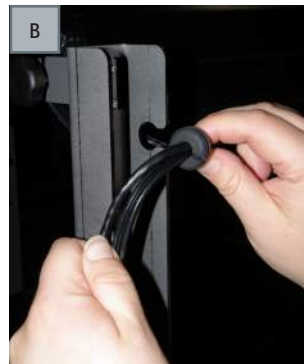
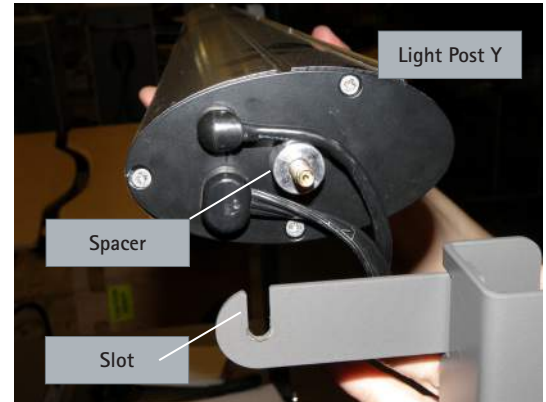
• STEP 9

INSTALL LIGHT ASSEMBLY – FOR STL-SERIES TABLES

- Locate the large box containing the light assembly (835-5517-00) and inventory the parts:
 - 1 ea Ambient Light Assembly (400-5410-00)
 - 1 ea Light Post Y, with the notch at one end (225-4581-00)
 - 1 ea Light Post X, no notch (225-4580-00)
 - 2 ea Post Covers, installed on Posts (225-4551-00)
 - 1 ea Arm 3-1/4" long, slotted (225-4582-00)
 - 1 ea Arm 3-1/4" long, no slot (225-4550-00)
 - 1 ea Rubber Grommet (175-5305-00)
 - 2 ea Knobs, female (325-5212-00)
 - 4 ea #10-24x1/2 Socket-head Cap Screw (325-5598-00)
 - 4 ea #10-24 Nylock Nuts (325-5186-00)
 - 2 ea 1/2" Thread-forming Screw (325-5464-00)
 - 2 ea Spacer (325-5620-00)
- For the 60w table (Image A), open the back cable enclosure door. Locate the end plates on the far left and right of the enclosure. Each plate has a rectangular opening with threaded holes all around. Using the Anthro driver, loosely install two 10-24 Socket-head Cap Screw (325-5598-00) at the top and bottom outside corners. Don't tighten them all the way – just a couple of turns. Repeat for the right end bracket.
- For the 72w table (Image B), open the back cable enclosure and locate the upper cross bracket, the metal bracket that runs the width of the table at the top of the enclosure. Count in six holes from the left edge of the table and loosely install one 1/2" Thread-forming Screw (325-5464-00). Repeat for the right side.
- Locate the lower cross bracket and loosely install fasteners (two #10-24 Socket-head Cap Screws, 325-5598-00, and capture with two Nylock Nuts, 325-5186-00) directly below the screws in the upper bracket. Loosely install.



- Locate Light Post Y - it has a notch at the top. Remove the post cover from the post by pushing down on the slot at the top of the post cover and pulling the cover away from the post. Set aside the post cover.
- Align the keyhole openings on the lower end of Light Post Y with the screws on the left. Slip the post onto the screws, but don't tighten the screws yet. Repeat for Light Post X.
- Locate the Ambient Light Assembly and remove the foam stem covers at each end. Install one Spacer (325-5620-00) over the threaded stem at each end. Route the cords at one end of the Light Assembly around the spacer, one above the spacer and one below.
- Install the Light Assembly onto the Light Posts by inserting the threaded stem at the cordless end of the assembly into the hole at the top of Light Post X. Slide the threaded stem on the other end of the assembly (the end with the cords) into the slot at the top of Light Post Y. Secure with 2 knobs (325-5212-00).
- Route the cords through the post. First, slip the cords into the notch at the side of Light Post Y, then route them down the post and out through the hole at the bottom of the post (Image A). Install the grommet over the cords where they enter the notch: pull the cords out of the notch, slip the rubber grommet, 175-5305-00, over the cords where they meet the post, then, holding the cords on either side of the grommet, press the cords and grommet into the notch (Image B).
- Plug the power cord into the power strip. Connect the data cable: from under the front of the table, locate the bundle of data cables that run from the control pads back to the enclosure. Trace the bundle back to the enclosure and locate the open RJ45 (phone) jack. Plug the data cable from the light into that jack.
- Tighten all the fasteners. Slip a cover over each post so the tab at the bottom of the cover rests inside the slot at the base of each post (Image C).



STEP 10

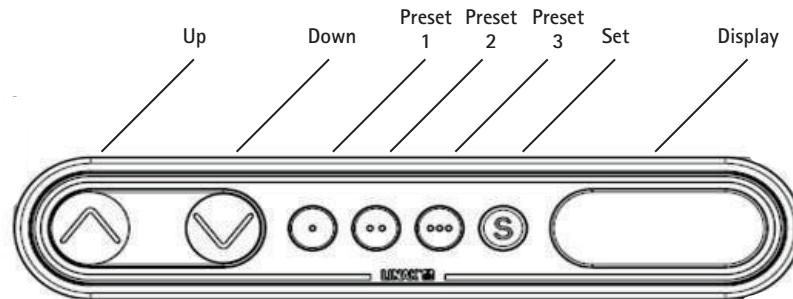
TEST THE TABLE

- Make sure the table is plugged in and the switch on the power bar is on.
- Remove the protective covers on the task lights. Turn on the task lights and check the dimmer controls.
- Turn on the ambient light; test the dimmer control. Expect a slight delay in the response of the light to the controls.
- Turn on the fan and check for air flow.
- Move the table to its lowest position. Check that the readout says 23.00" (26.00" for a table with casters). To reset the height display, see the Troubleshooting Guide.
- Raise the table to its full height.
- Check that the lower cable carrier extends properly. If it doesn't, loosen (but do not remove) the fasteners on the foot of the table. Adjust the cable carrier so that it's straight up and down, then tighten the fasteners.
- Slide the Monitor Easy Track forward and back and check for interference with the monitor boom or cable carrier.
- Test the Safety Stops. Locate the float plates on the left and right sides of the table where the legs meet the top.
- Use the keypad to move the legs down. While the legs are moving, press one float plate. The table should stop moving down and move up 2". Repeat for the other float plate.

STEP 11

PROGRAM THE HEIGHT PRESETS

- Move the table to the desired height using the Δ and ∇ keys.
- Press the "S" button. The display will flash for two seconds. While the display is flashing, press one of the small buttons with dots to program that button with this position. The panel will confirm by showing a 1, 2, or 3 on the display.



Steve's Station keypad

CLEANING INSTRUCTIONS

- Clean Steve's Station surfaces with a non-abrasive cleaner and a soft cloth. Durable finishes are designed to stand up to frequent cleaning.

TROUBLE-SHOOTING GUIDE

The fan doesn't blow.

- Check that the table is plugged into a working outlet.
- Check that the fan/light assembly is securely plugged into the power strip in the cable enclosure.
- Locate the bottom of the fan assembly under the worksurface. Trace the cords back to their connection point and make sure that the cords are securely connected.

The task lights don't go on or the dimmer doesn't work.

- Check that the table is plugged into a working outlet.
- Check that the fan/light assembly is securely plugged into the power strip in the cable enclosure.
- Locate the bottom of the fan assembly under the worksurface. Trace the cords back to their connection point and make sure that the cords are securely connected.

The ambient light doesn't go on or the dimmer doesn't work.

- Expect a slight delay in the response of the light to the controls.
- Check that the table is plugged into a working outlet. Check that the fan/light assembly is securely plugged into the power strip.
- If the light doesn't respond to the controls, check that the power connection and the RJ45 connection in the cable enclosure are secure.
- Replacement lamp: F28 T5/841.

The power strip in the cable enclosure doesn't provide power.

- Check that the table is plugged into a working outlet.
- Check that the switch's power strip is in the on position. If it's in the on position and the light is not on, turn the switch off and then on to reset it.

The switch on the power strip keeps turning off.

- Excessive load on the power strip will trip the circuit breaker. Try unplugging some of the items, then turn the switch off and on to reset.

The power strip on the worksurface doesn't provide power.

- Check that the table is plugged into a working outlet.
- The upper power strip plugs into the power strip in the cable enclosure. Check that this connection is secure.

The height control display is not on.

- Push the UP or DOWN button to bring the display out of SLEEP mode.
- Check that the table is plugged into a working outlet.

The table will not move – up or down.

- Check that the table is plugged into a working outlet.
- Locate the Control Box in the cable enclosure and check that the cord connections are secure.
- Check for and remove obstructions under the table that have triggered the safety stops.

Error codes on the height adjustment display

- E01 – Position lost. Home the table: lower the table as far as it will go. Release the button, then press and hold for five seconds. The table will bump slightly as the legs reset.
- E02, E28, E39 – Overload or obstruction UP. The table won't go up because it is carrying too much load or is pushing against an obstruction. Reduce the load or remove the obstruction.
- E03, E32, E33, E36, E37, E40, E41 – Overload or obstruction DOWN. The table won't go down because it is carrying too much load or is pushing against an obstruction. Reduce the load or remove the obstruction.

The height display shows the wrong height

- Program the table's height display following these steps:
- Use the \triangle and ∇ keys to move table to its lowest position. Let go of the keys.
- Press \triangle and ∇ keys at the same time and keep them pressed for 5 seconds.
- Use the \triangle and ∇ until the readout says 23.00. Let go of the keys.
- The system will return to normal operation (and give a short blink) after 5 seconds of inactivity on the keys.

Touchboards

205 Westwood Ave, Long Branch, NJ 07740
Phone: 866-94 BOARDS (26273) / (732)-222-1511
Fax: (732)-222-7088 | E-mail: sales@touchboards.com



Technology Furniture®
– Fast and Friendly!



Warranty:
Steve's Station has a Lifetime Warranty against manufacturing on the table; five-year warranty on legs and electrical system.
Lamps, cords, and plugs are not warranted.

Notices:
Technology Furniture, Steve's Station, and Monitor Easy Track are trademarks of Anthro Corporation.
Anthro reserves the right to modify the design and specifications without prior notice.

Anthro Corporation® | 10450 SW Manhasset Dr. | Tualatin, OR 97062
Toll-free: 800.325.3841 | Fax: 800.325.0045 | email: sales@anthro.com | anthro.com
Outside the U.S. | Tel: 503.691.2556 | Fax: 503.691.2409