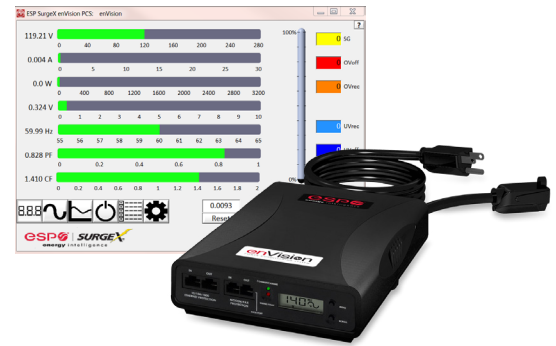


# enVision®

POWER CONDITIONING SYSTEM

## Unsurpassed power protection and analytics that reduce service costs and downtime.




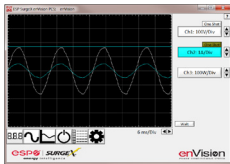




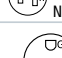

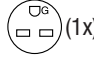

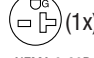



The enVision PCS combines the most advanced power protection technology available with unsurpassed analytics that monitor, identify, and offers solutions to resolve power issues that can impact the profitability of service teams.

Featuring state-of-the-art diagnostic software and an integrated scope meter, service teams will be able to monitor power disturbances, record time-stamped events, customize equipment voltage settings, and analyze electrical data via multiple display and communication modules. It is the only software that identifies the potential cause of power issues and offers solutions to resolve them. When combined with the ESP Remote Portal module, the data is available remotely via any IP enabled device and alerts service teams that a problem has been detected.

The enVision PCS also includes patented Multi-Stage power protection and conditioning that includes Cat 6 network and ground fault protection to ensure connected equipment is safeguarded.

### Features:

- Identifies preexisting power conditions, provides an instant analysis of data and offers resolutions to resolve issues
- Integrated scope meter
- Multi-Stage power protection and conditioning technology
- Lowers service costs, ensures fault-less installs, and improves customer uptime
- Measures neutral to ground voltage, crest factor, power factor, and line frequency metrics
- Records power and energy usage
- Internal battery to provide accurate data and time stamps, even during power outages
- Built-in LCD screen to provide easy access to recorded events, parameters and settings
- Integrates with multiple communication platforms, including: TCP-IP, Zigbee, Cellular, Wi-Fi, and Bluetooth

	Model Number	Plug Configuration		Description
		Input	Output	
  	EV-12015	 NEMA 5-15P	 NEMA 5-15R (3x)	Diagnostic Power Conditioning System + Scope Meter, 120V/15A 1 Pigtail + 2 Receptacles, Diagnostic software included
	EV-12020	 NEMA 5-20P	 NEMA 5-20R (1x)  NEMA 5-15R (2x)	Diagnostic Power Conditioning System + Scope Meter, 120V/20A 1 Pigtail + 2 Receptacles, Diagnostic software included
	EV-20815	 NEMA 6-15P	 NEMA 6-15R (1x)	Diagnostic Power Conditioning System + Scope Meter, 208V/15A 1 Pigtail, Diagnostic software included
	EV-20820	 NEMA 6-20P	 NEMA 6-20R (1x)	Diagnostic Power Conditioning System + Scope Meter, 208V/20A 1 Pigtail, Diagnostic software included
	EV-23010	 IEC	 IEC C13 (2x)	Diagnostic Power Conditioning System + Scope Meter, 230V/10A 1 IEC Plug + 2 IEC Receptacles, Diagnostic software included
	RP-IP	5V, 500mA, USB Mini	(1) RJ45 Server Port	Allows remote IP access to ESP diagnostic software, RJ25 6p6c Standard Pinout

# enVision<sup>®</sup>

POWER CONDITIONING SYSTEM

**\$15 billion is lost each year due to power quality issues.**  
**Don't let power problems impact your service profitability.**

## Premium diagnostic technology, improves the capabilities of your service department

### Measures:

- Line-Neutral voltage
- Neutral-ground voltage
- Amperage
- Power
- Crest factor
- Power factor
- Line frequency
- Energy usage

### Records Events:

- Over/under voltage
- Surges
- Power outages
- Shut off events

### Customizes:

- Over and under voltage
  - Shut off levels
  - Recording levels
  - Restore levels

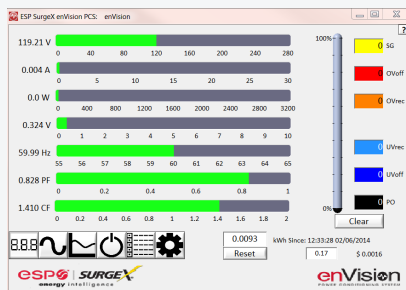
### Displays:

- Wiring faults
- Electrical parameters
- Power disturbances and outages
- Abnormal conditions
- Outlet status
- User controls

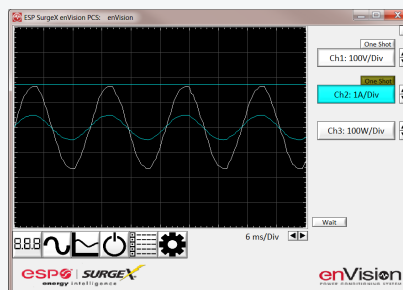
### Offers Solutions

- Check for abnormal load, correct as necessary
- Check for excessive N-G voltage, contact qualified electrician

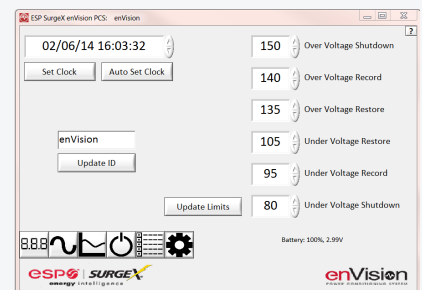
## Sophisticated software, gives service teams a comprehensive troubleshooting solution



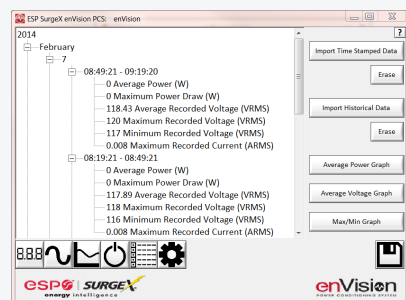
Real-time digital multi-meter



Real-time scope meter



Over/under voltage customization



Historical electrical parameter summary

enVision PCS Power Anomaly Summary Report

Report Generated On: 2/7/2014 3:29:12 PM

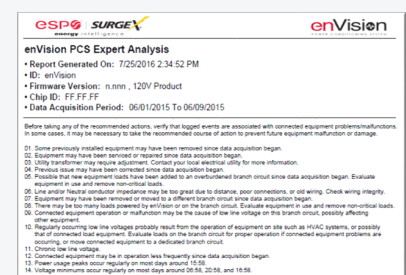
ID: enVision

Firmware Version: 1.0D5, 120V Product

Chip ID: 41 42 43

Date	Time	Event Type	Threshold	Event Type	Recorded	%
02/07/14	14:30:00	Turn On		Surge	0	0
02/07/14	09:45:59	Turn Off (Loss of Ground)		Over Voltage (Cutoff)	0	0
02/07/14	09:45:59	Power Outage		Over Voltage (Record)	0	0
02/07/14	12:48:45	Surge		Under Voltage (Record)	0	0
02/07/14	14:30:00	Turn On		Under Voltage (Cutoff)	0	0
01/30/14	16:34:50	Power Outage		Power Outage	1	100
01/28/14	16:34:41	Surge		Type	1	100
01/28/14	16:34:41	Turn On				
01/28/14	16:32:51	Power Outage				
01/28/14	22:12:53	Turn On				
01/28/14	16:32:51	Turn Off (Loss of Ground)				
01/27/14	13:16:10	Power Outage				
01/27/14	13:16:10	Turn On				
01/27/14	12:21:46	Power Outage				
01/27/14	14:05:54	Turn On				
01/27/14	13:16:10	Power Outage				
01/27/14	13:16:10	Turn On				
01/27/14	12:21:36	Turn Off (Software)				
01/27/14	12:07:50	Turn On				
01/23/14	15:29:07	Power Outage				
01/23/14	11:22:53	Turn On				
11/01/13	13:41:33	Power Outage				
11/01/13	13:41:33	Turn Off (Loss of Ground)				
11/01/13	13:41:33	Surge				

Time-stamped power anomaly reports



Identifies issues and proposes solutions

## Multiple display and communication modules, puts you in control

- Integrated scope meter
- LCD event notifier and interface on the unit
- Additional communication capabilities available
  - TCP-IP allows integration with MFP platforms
  - RCC accessory available for remote monitoring

## Professional-grade ESP power protection and conditioning system, protects connected equipment

- Multi-Stage Power Protection
- Electrical Noise Filtration
- Over/Under Voltage Protection
- Cat 6 network protection
- Telephone line protection
- Wiring Fault Protection