

HIGH DEFINITION STEREO MICROSCOPY

SYSTEM 373

The Perfect Balance
Of Performance & Productivity

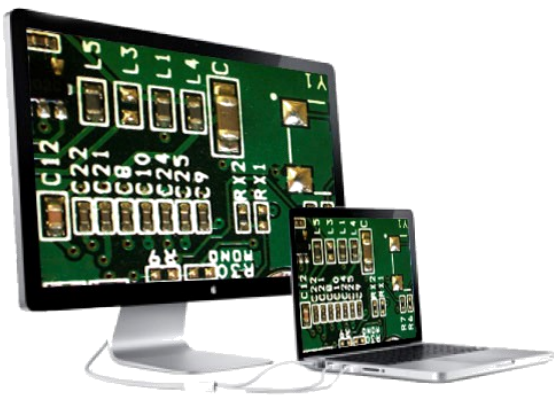
High definition stereo microscopy systems from UNITRON deliver exceptional performance, convenience (no PC needed), and ergonomics.

System 373-ESD

- High resolution
- Flexible, adjustable and dependable
- ESD-Safe for static-sensitive environments



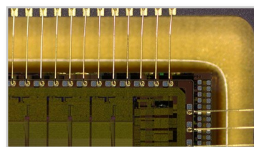
Shown above:
CAT# 23725RB-HDTRTHOL-ESD



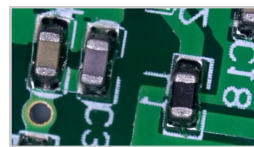
**Your fully-integrated
inspection solution
is ready to deliver!**

Excelis HD

- HDMI-out for instant live viewing — connect to your own monitor or with the included monitor (HDS)
- On-board software for live measurements
- Advanced image acquisition and analysis with the included *CaptaVision™* software (requires a PC)



Perfect color reproduction



Manipulate live images
without lag



Full HD resolution allows clear
and fast live image inspection

Choose Your SYSTEM 373!

Choose the *Excelis* HD and 373 microscope combination, or just the *Excelis* HD camera to complete your existing System 373 Stereo Microscope System. No PC required!

Complete Systems: CAT# 23725RB-HDTRTHOL-ESD

Camera ONLY: CAT# 18795-HD

SYSTEM 373 SPECIFICATIONS

- ESD-Safe
- TRU Trinocular viewing body
- SWF10x eyepieces, 23mm field of view
- 7x—45x magnification range
- 118mm working distance
- Dual Boom Ball Bearing Stand
- Dimmable LED-High Output Ring Light
- Video adapter

Optional Accessories

Auxiliary Lenses: 0.5x reducing lens, 195mm W.D.; 0.7x reducing lens, 145mm W.D.

Eyepieces: SWF15x eyepiece

SYSTEM 373 OPTICAL SPECIFICATIONS

		Objective Zoom Setting 0.7X – 4.5X			
Eyepieces	Objective	1.0X (included)	0.5X	0.7X	2.0X
10X	Total Magnification (Range)	7X – 45X	3.5X – 22.5X	4.9X – 31.5X	14X – 90X
	Field of View (mm)	32.8 – 5.1	65.7 – 10.2	46.9 – 7.3	16.4 – 2.6
15X	Total Magnification (Range)	10.5X – 67.5X	5.3X – 33.8X	7.4X – 47.2X	21X – 135X
	Field of View (mm)	24.3 – 3.8	48.6 – 7.6	34.7 – 5.4	12.1 – 1.9
	Working Distance (mm)	118	195	145	35

CAMERA SPECIFICATIONS

Sensor / Size	SONY IMX236 / 1/2.8", 0.5x C-mount recommended
Live Resolution	1920 x 1080
Frame Rate	HDMI (60fps); USB 2.0 (30fps)
Image Capture	High Speed SD Card (8GB)
Video Capture	HDMI: 1080p, 30fps to SD Card USB 2.0: 1080p, 30fps to PC/Mac
Exposure Time	0.001sec—10.0 sec
White Balance	Auto
Settings	Gain, Gamma, Saturation, Contraction
Built-in Software	Cloud 1.0 (With live image measurement)
PC Imaging Software	CaptaVision+ Imaging Software for PC and Mac OS Advanced Camera Controls: live/ still image measurement and annota- tion; flat field correction; extended depth of focus (focus stacking); image stitching; fluorescence image settings; fluorescence multi-color channel merge; HDR (High Dynamic Range) function Image Types: JPEG, PNG, TIFF and DICOM (DICOM not available for Mac) CaptaVision+ is compatible with Excelis HD cameras purchased after January 2019 (Serial numbers start- ing with "19" — i.e., SN 19XXXXX)
Output Modes	Mode 1: USB 2.0 / Mode 2: HDMI
System Compatibility	Windows XP, Vista, 7, 8, and 10 (32 or 64 bit) Mac OSX 10.4 and higher System Requirements: Intel pro- cessor (Core 2 Duo or higher); 2GB memory or more; USB 2.0 Hi-Speed port
Power Supply	DC12V/1A

*Design, features and specifications
are subject to change without notice.*



HDMI Output



USB2.0 Output



SD Storage