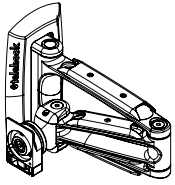
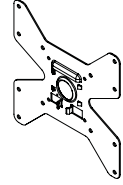


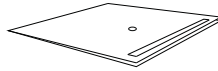
Component Checklist



Articulated Arm



VESA Plate



Drill Guide

Tools Required:

- Power Drill
- 6mm (0.25") Drill Bit
- 10mm (0.4") Masonry Drill Bit
- Phillips-head Screwdriver
- 13mm (0.5") Socket Wrench or Shifter

Hardware



Coach Bolt (x2)



Concrete Anchor (x2)



M4/5 Spacer (x4)



Security Screw (x1)



M4/M5 Washers (x4 each)



M6/8 Spacer (x4)



3mm Allen Key

Display Mounting Screws



M4x16/25mm (x4 each)



M5x16/25mm (x4 each)



M6x16/30mm (x4 each)



M8x16/30mm (x4 each)

IMPORTANT INFORMATION:

! IMPORTANT - Install Telehook 1040 Flat Screen Wall Mount as per Installation Instructions.

! This product supports a maximum load of 25kg (55lbs).

! This product supports VESA mounting hole configurations: VESA plate, 75x75mm, 100x100mm, 200x100mm, and 200x200mm.

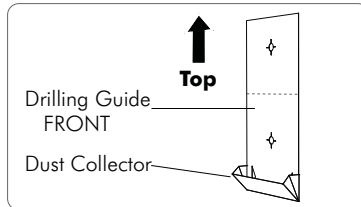
! The manufacturer accepts no responsibility for incorrect installation.

Step 1. Check Components

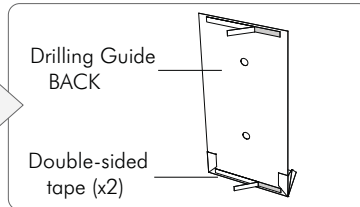
Check you have received all parts against the component checklist and Hardware above.

Step 2. Locate Drilling Position

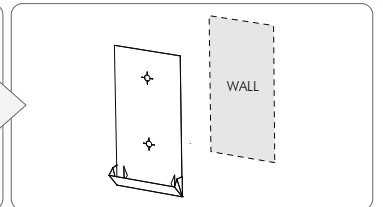
Choose the location of your Telehook Wall Mount, ensuring that the wall is structurally sound (for a timber stud wall, locate the stud using a stud detection device). Use the Drilling Guide to mark out the hole centres.



Un-fold the Drilling Guide and open the Dust Collector.



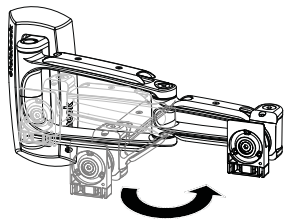
Peel away the backing from the double-sided adhesive tape.



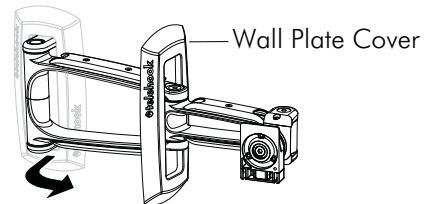
Position the Drilling Guide vertically onto the wall using a Spirit Level.

Step 3. Attaching the Articulated Arm to the Wall

Remove the Telehook Arm from the packaging and open fully.

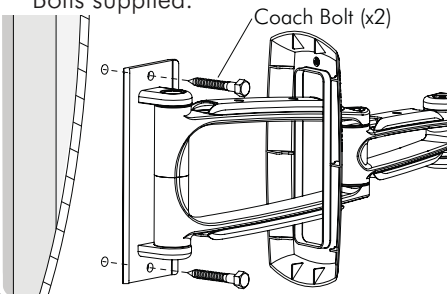


Un-clip the Wall Plate Cover and slide down the arm.



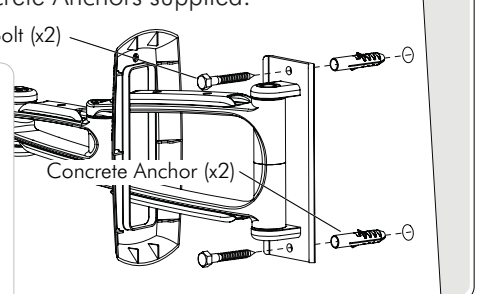
Timber Stud Wall

- Drill two 6mm (0.25") diameter holes, 50mm (2") deep.
- Secure the Mounting Plate to the wall using the Coach Bolts supplied.

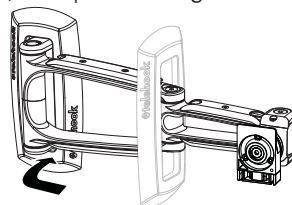


Masonry Wall

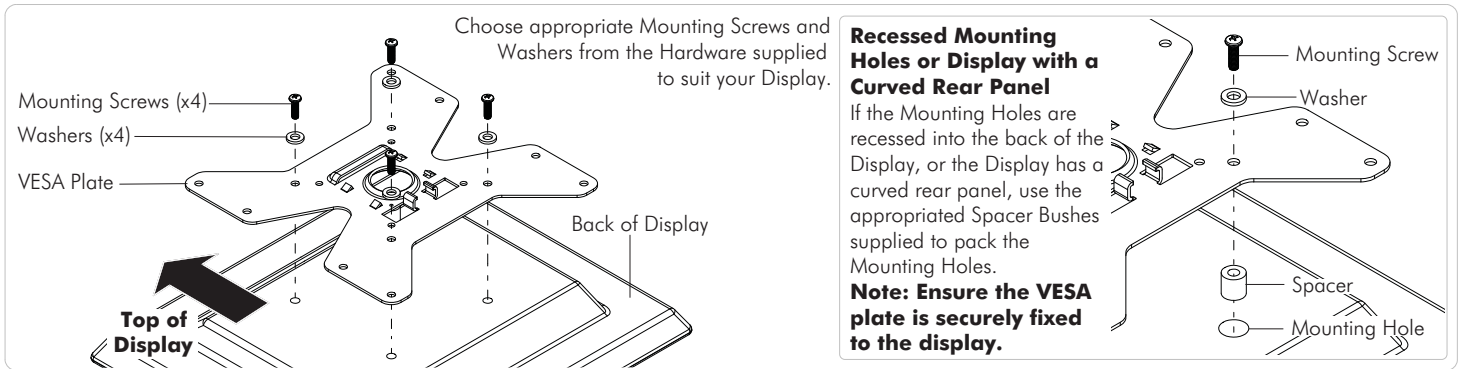
- Drill two 10mm (0.4") diameter holes, 50mm (2") deep.
- Secure the Mounting Plate to the wall using the Coach Bolts and Concrete Anchors supplied.



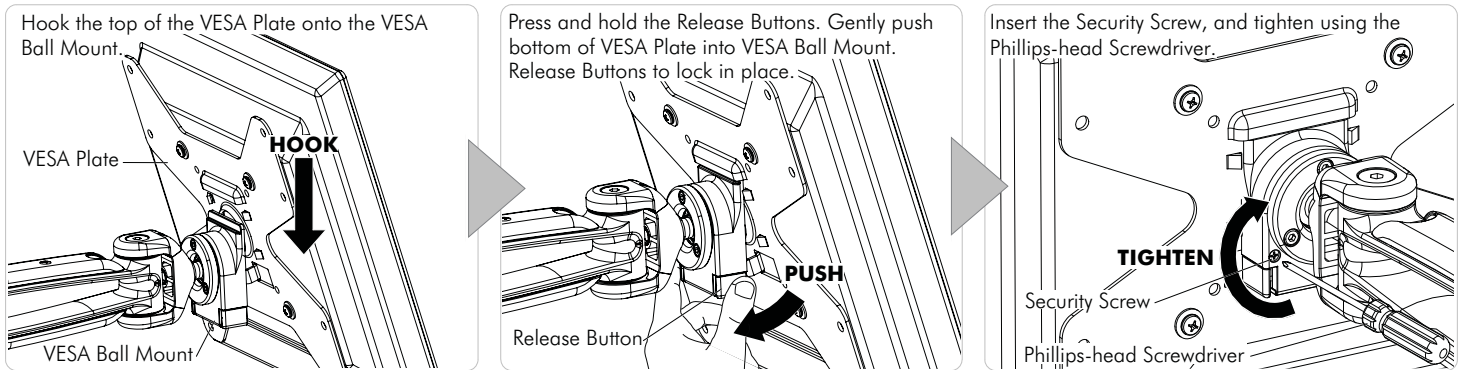
Slide the Wall Plate Cover back along the arm, and push flat against the wall.



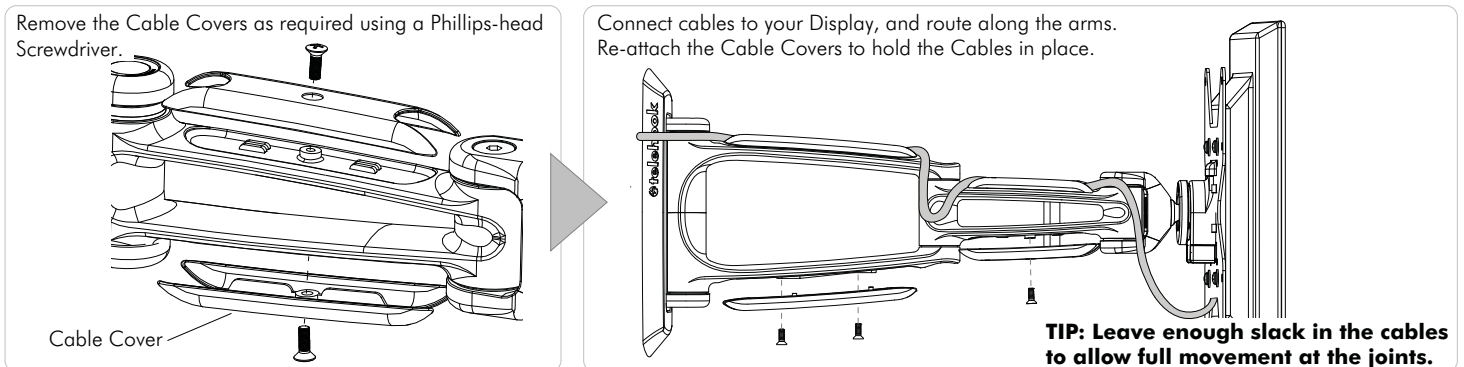
Step 4. Attaching the VESA Plate to your Display



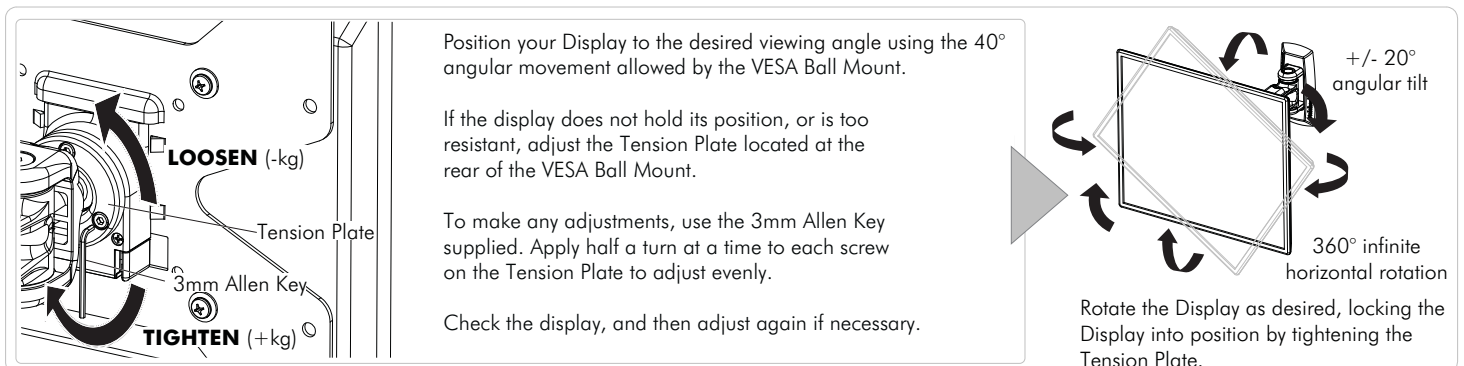
Step 5. Attaching your Display to the Arm



Step 6. Cable Management



Step 7. Final Adjustment



Installation Complete



Touchboards

205 Westwood Ave, Long Branch, NJ 07740
Phone: 866-94 BOARDS (26273) / (732)-222-1511
Fax: (732)-222-7088 | E-mail: sales@touchboards.com