

telehook®

Slim wall mount | fixed

TH-3060-UF



Suits mounting hole patterns
100-600mm (4-23.5") W x
46-420mm (1.8-16.4") H



Flexible wall mount



Suits displays up to
50kg (110lbs)



User adjustable
horizontal position



Detachable mounting
head



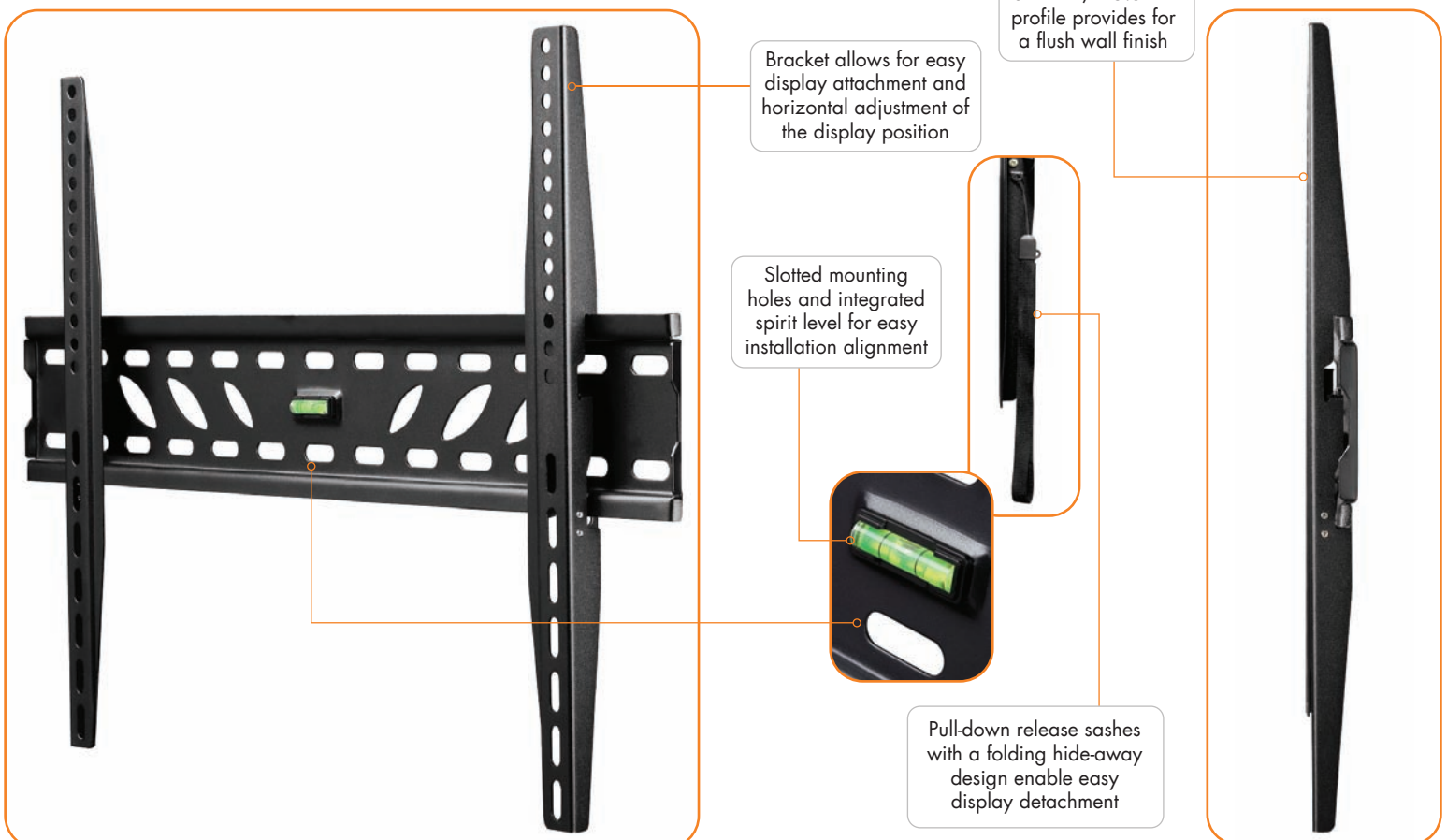
Latched Quick
Attachment system

This mounting solution is designed to suit the latest range of mid weight flat screens. It features a quality steel construction with a slim profile and a sleek matt black finish. It can be installed on walls in a variety of environments and is easy to set up. The display bracket allows for height adjustment during installation and horizontal adjustment both during and post installation. An attachment latching system allows the display to be easily cabled and then simply lifted and clicked into place. Release sashes on the latching system feature a fold-up design so they can be safely hidden behind the screen.



Product key features:

- Quality steel construction with a durable powder coat finish
- Slim profile suits modern LED/LCD displays and contemporary living environments
- When installed the Screen is offset just 25.5mm (1") from the wall
- Designed for displays of up to 50kg/ 110lbs with mounting patterns from 100x46mm to 600x420mm
- Designed for easy installation with in-built spirit level and slotted mounting holes for alignment
- Designed for flexible operation with provision for post installation adjustment of the horizontal display position and snap-in /quick release display attachment
- Suitable for attachment to timber stud and masonry walls*
- Supplied with mounting hardware and installation guide



* Drywall / plasterboard attachment is possible however additional wall anchors will be required (see your hardware supplier).



Atdec Global www.atdec.com.au
Atdec North America www.atdec.com

Product information, single unit

Load capacity	Material	Style
50kg (110lbs) Max	Steel	Matt Black

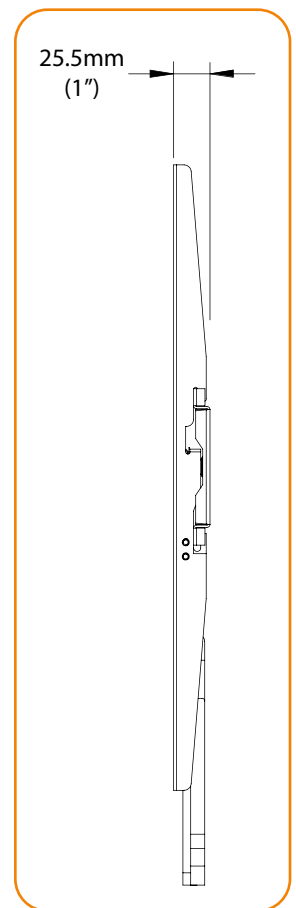
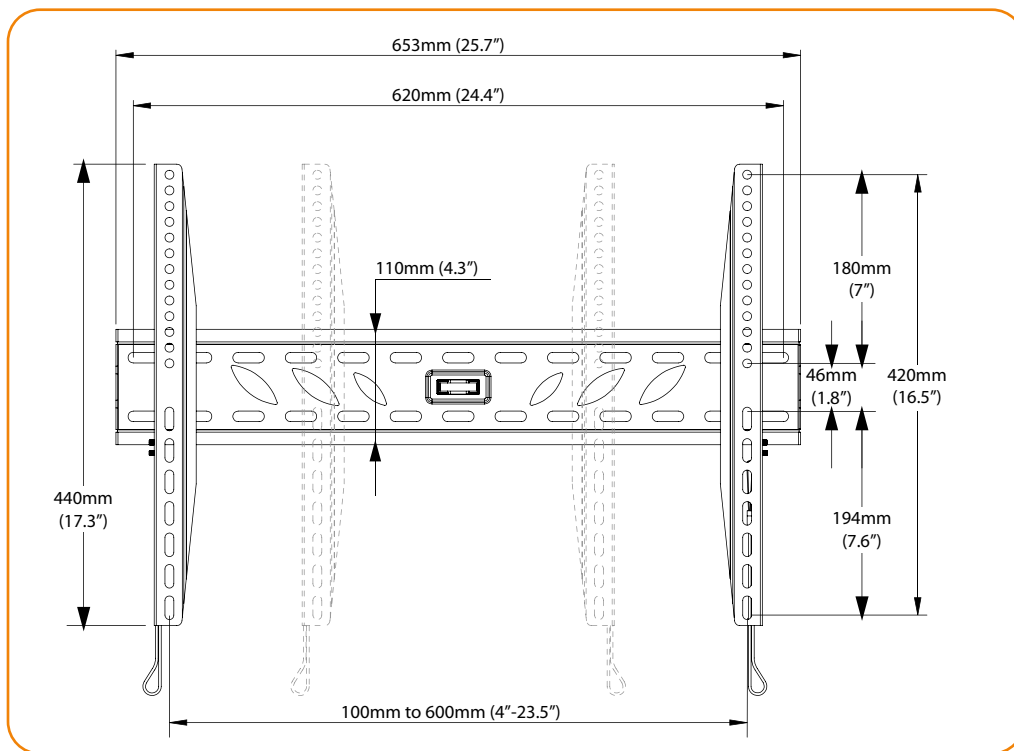
Package information, single unit

Size (L x W x H)	Ship weight	UPC code	Contents
673mmx124mmx48mm (26.5"x 4.9"x 1.9")	1.8Kg (4lbs)	881493006898	wall plate, display brackets (x2), wall mounting screws, wall plugs, display mounting screws and spacer adaptors

Package information, master pack

Size (L x W x H)	Ship weight	UPC	Units per master pack
686mmx257mmx257mm (27"x10.1"x10.1")	19.1Kg (42lbs)	881493006911	10

Technical drawings



Related Products:

TH-3060-UT	Slim mounting with tilt adjustment
TH-3060-LPF	Ultra-slim fixed mounting
TH-3070-UF	Fixed mounting for large/ heavy screens

Atdec mounts are designed, developed and tested in Australia. We manufacture an extensive range of display and projector mountings for a variety of user types and situations. While all efforts have been made to ensure the information in this brochure was correct as of the date of printing, we reserve the right to change specifications without notice. Please refer to the web site for our full range along with the latest details on specifications, compatibility and dealer location. Atdec and Telehook are registered trademarks with all rights reserved. Copyright Aug 2011 V2.0



Atdec Global www.atdec.com.au
Atdec North America www.atdec.com