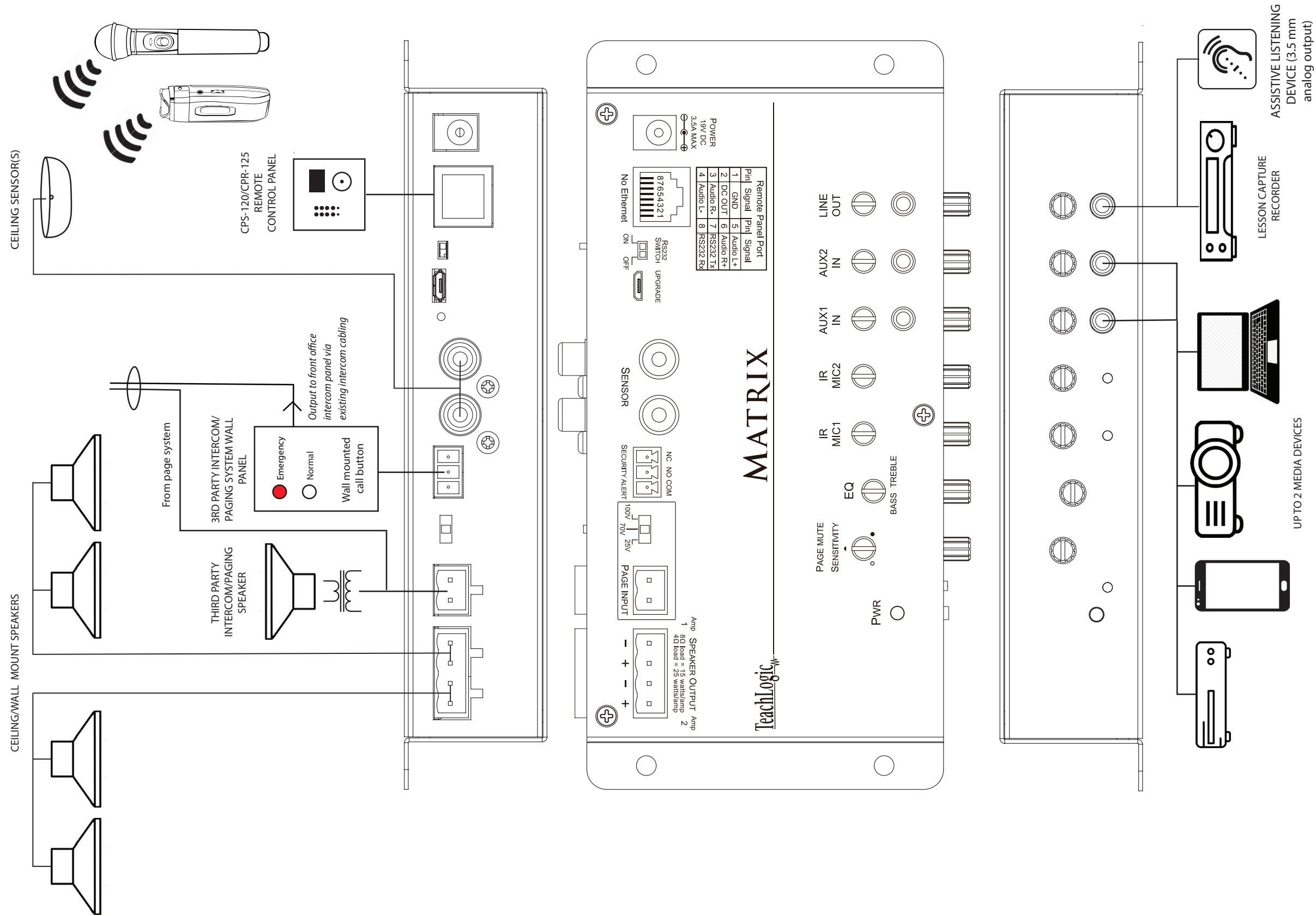


TeachLogic Matrix™ Wiring Diagram



Features:

- 2 infrared wireless microphone receivers with volume control
- 2 stereo, line level, or aux inputs (3.5mm)
- 1 dual mono line level output for Assitive Listening System with gain control (3.5mm)
- 2 Power Amplifiers: Total 50 W RMS (Class D amplifier, 25 W ea channel)
- Security Alert, contact closure, N/O, N/C
- Page override (muting) with Page Pass-through to classroom speakers | Input level 100V, 70V, 25V
- RJ-45 input for TeachLogic remote control wall panel (two control panel models available: CPS-120 & CPR-125)
- RS-232 on/off switch (disables amp input controls when remote control panel is in use)
- Teacher "Priority" instantly attenuates all line inputs
- Bass/Treble control equalizer ± 12 dB
- 2 external microphone sensor inputs, single RCA
- Bluetooth connection (when using CPS-120 or CPR-125 remote control panel)