

## Matrix™ Specifications

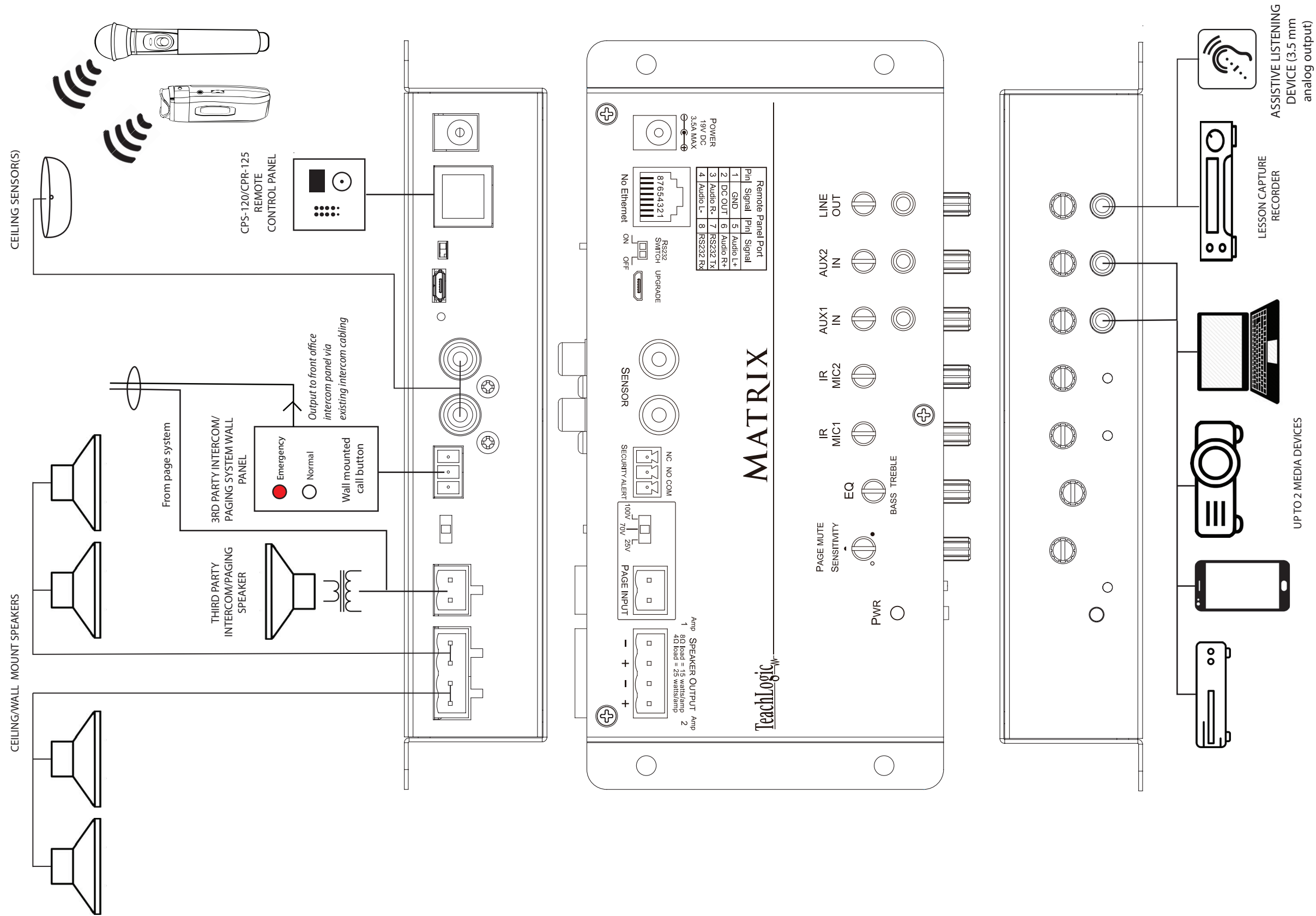
Receiver Input	Infrared FM
Modulation	FM wide-band
Reception Frequencies	Ch. A: 2.08 MHz   Ch. B: 2.54 MHz
Infrared Wavelength	850 nm
Tone Signal	Ch. A: 32.768 kHz
De-emphasis	50 μs
Frequency Response	40 Hz - 18 kHz   ± 3 dB
S/N Ratio	>65 dB
Total Harmonic Distortion	<1 % @ 1 kHz
Nominal Deviation	± 10 kHz
Maximum Deviation	± 25 kHz
External Sensor Input	2, RCA
Connectivity Coverage	1,600 sq ft
Line Inputs	2 : 3.5 mm line level aux with +10 dB gain control
Line Output	3.5 mm line level output with gain control
Page Over-Ride	2-pin Phoenix; 3 settings: 100V, 70V, 25V
Sensitivity	Level control
Security Alert	Contact closure (COM, N/O, N/C)
Equalization	Bass/Treble control, ±12 dB
Output Power	2 digital amplifiers @ 25 W, 50 W total (RMS)
Output Impedance	4 Ω min/channel 4-pin Phoenix connector
Power Supply	19 V DC   3.4 A; CE, CSA and UL Listed
Dimensions	7.5" W x 4.25" H x 1.5" D
Weight	1 lb 5 oz

# Matrix™

Amplifier | Infrared Microphone Receiver Audio Mixer | Wall Panel Controller  
IMA-120



# TeachLogic Matrix™ Wiring Diagram



## Features:

- 2 infrared wireless microphone receivers with volume control
- 2 stereo, line level, or aux inputs (3.5mm)
- 1 dual mono line level output for Assitive Listening System with gain control (3.5mm)
- 2 Power Amplifiers: Total 50 W RMS (Class D amplifier, 25 W ea channel)
- Security Alert, contact closure, N/O, N/C
- Page override (muting) with Page Pass-through to classroom speakers | Input level 100V, 70V, 25V
- RJ-45 input for TeachLogic remote control wall panel (two control panel models available: CPS-120 & CPR-125)
- RS-232 on/off switch (disables amp input controls when remote control panel is in use)
- Teacher "Priority" instantly attenuates all line inputs
- Bass/Treble control equalizer  $\pm 12$  dB
- 2 external microphone sensor inputs, single RCA
- Bluetooth connection (when using CPS-120 or CPR-125 remote control panel)