

Tektronix



P7700 and TDP7700 Series TriMode™ Probes

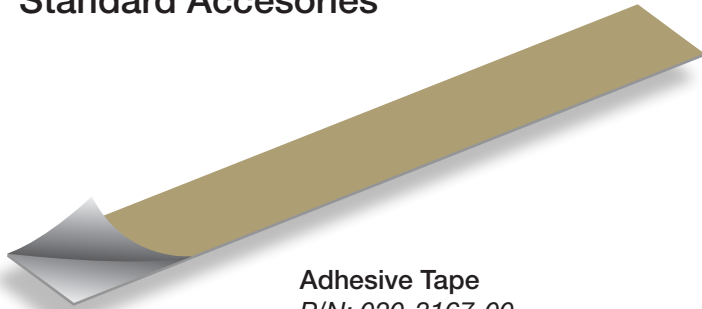
Quick Guide



070-7386-01

TekFlex™ Accessory Options

Standard Accesories



Adhesive Tape
P/N: 020-3167-00



Active Tip
■ P77STFLXA

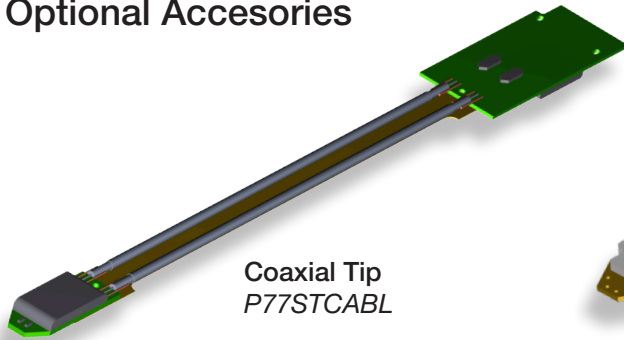


Wire Spool
P/N: 017-0103-00

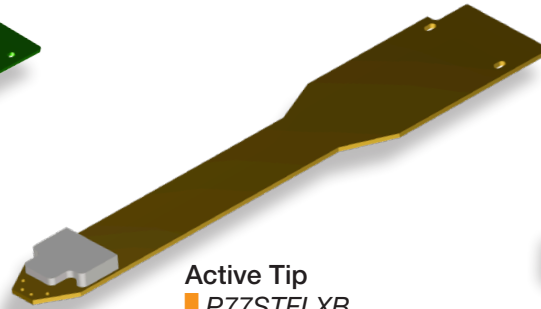


Color Bands
P7700: 016-1948-00
TDP7700: 016-2111-00

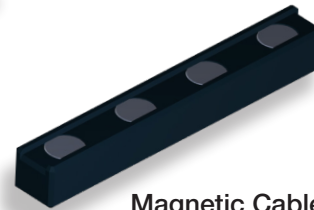
Optional Accesories



Coaxial Tip
P77STCABL



Active Tip
■ P77STFLXB



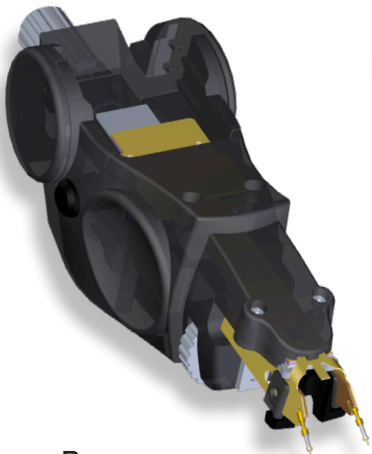
Magnetic Cable Holder
P/N: 121-1003-00



Large Metal Cable Band
P/N: 129-1867-00



Small Metal Cable Band
P/N: 129-1857-00



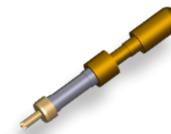
Browser
P77BRWSR



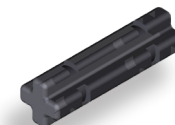
Browser Pen Wand
P/N: 020-3160-00



Browser Handsfree Tri-Pod
P/N: 020-3161-00



Browser Replacement Tips
P/N: 020-3162-00



Browser Adapters
P/N: 020-3163-00

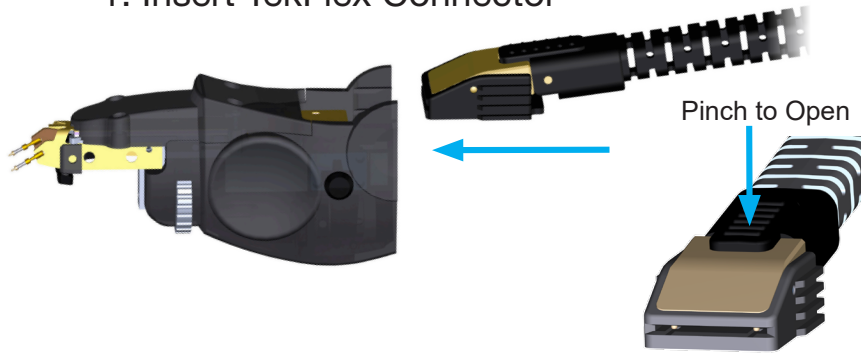


Ground Lead
P/N: 196-3436-00

Get to know your Browser

Assembling the Browser

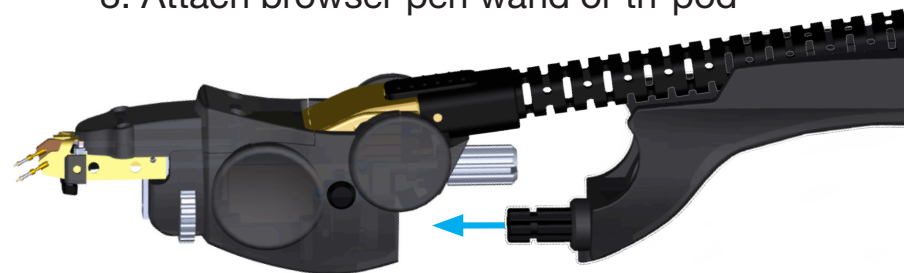
1. Insert TekFlex Connector



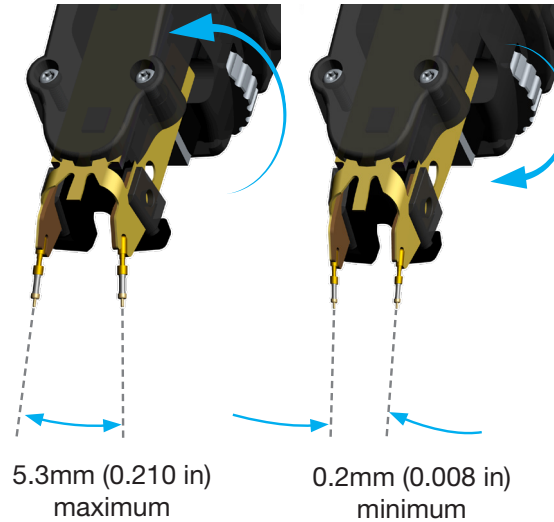
2. Attach collar, lock in place with thumb screw



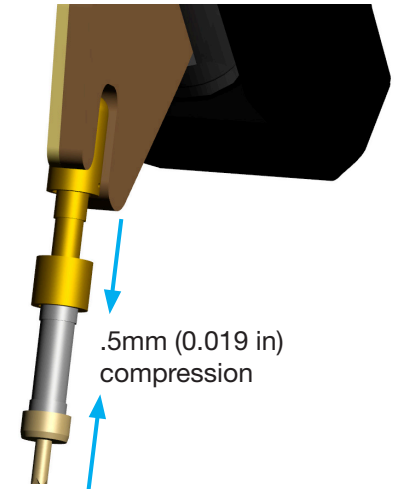
3. Attach browser pen wand or tri-pod



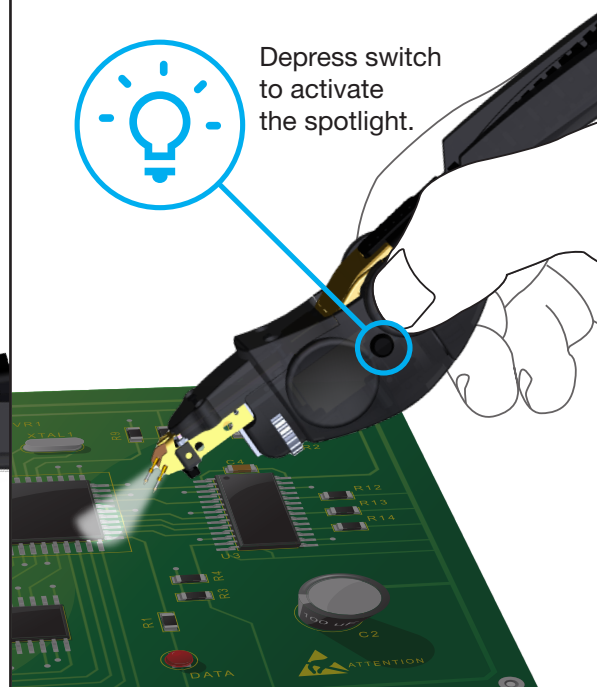
Adjusting the tip spacing



Spring action, better grip



The Spotlight

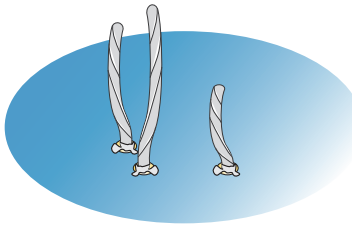


Connect the Tri-pod

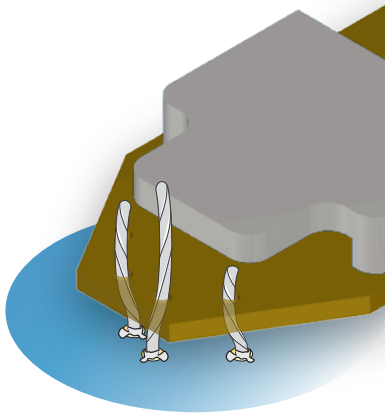


Testing your circuit with the solder-in-tips

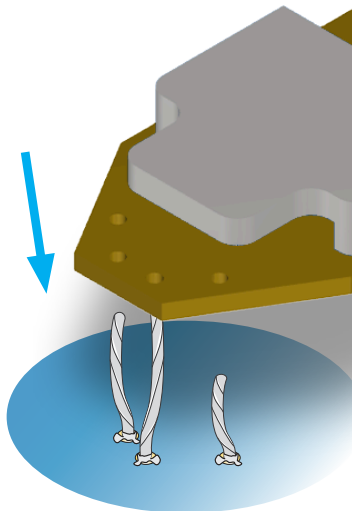
Step 1A



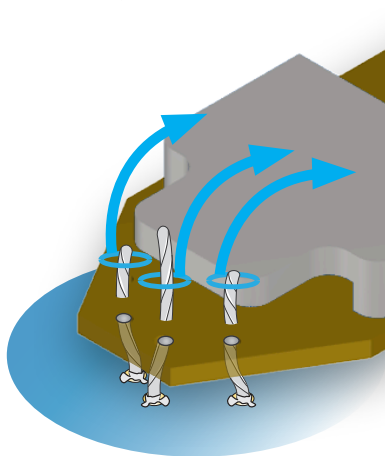
Step 1C



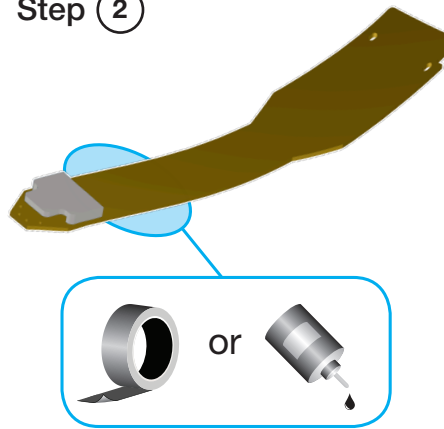
Step 1B



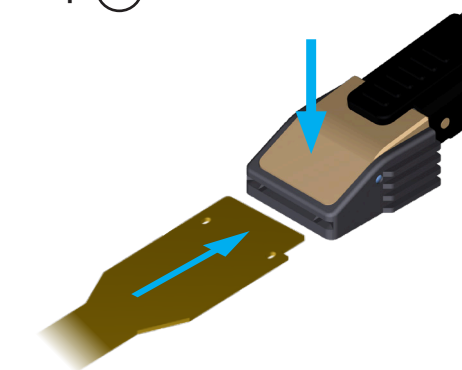
Step 1D



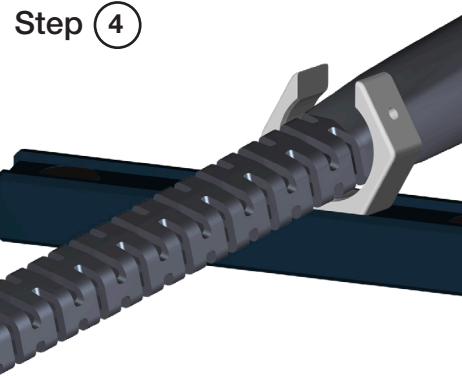
Step 2



Step 3



Step 4



Step 4

For additional strain relief mount magnetic bar to metal surface near DUT. Attach Metal Cable Band to boot or cable, then attach to Magnetic Cable holder.

Step 3

Orient the Flex Tip with the key feature as shown. Pinch to open TekFlex connector, slide tip into slot until it stops. Releasing TekFlex connector should lock tip into place.

Step 2

Apply tape to the bottom side of the flex circuit near tip if needed. To extend life of flex circuit do not bend sharply.

Step 1

Solder wire to test points. Slide tip down onto wires. Position tip close to board and solder wire to end of tip. Snip off & remove excess wire.

*See manual for detailed instructions