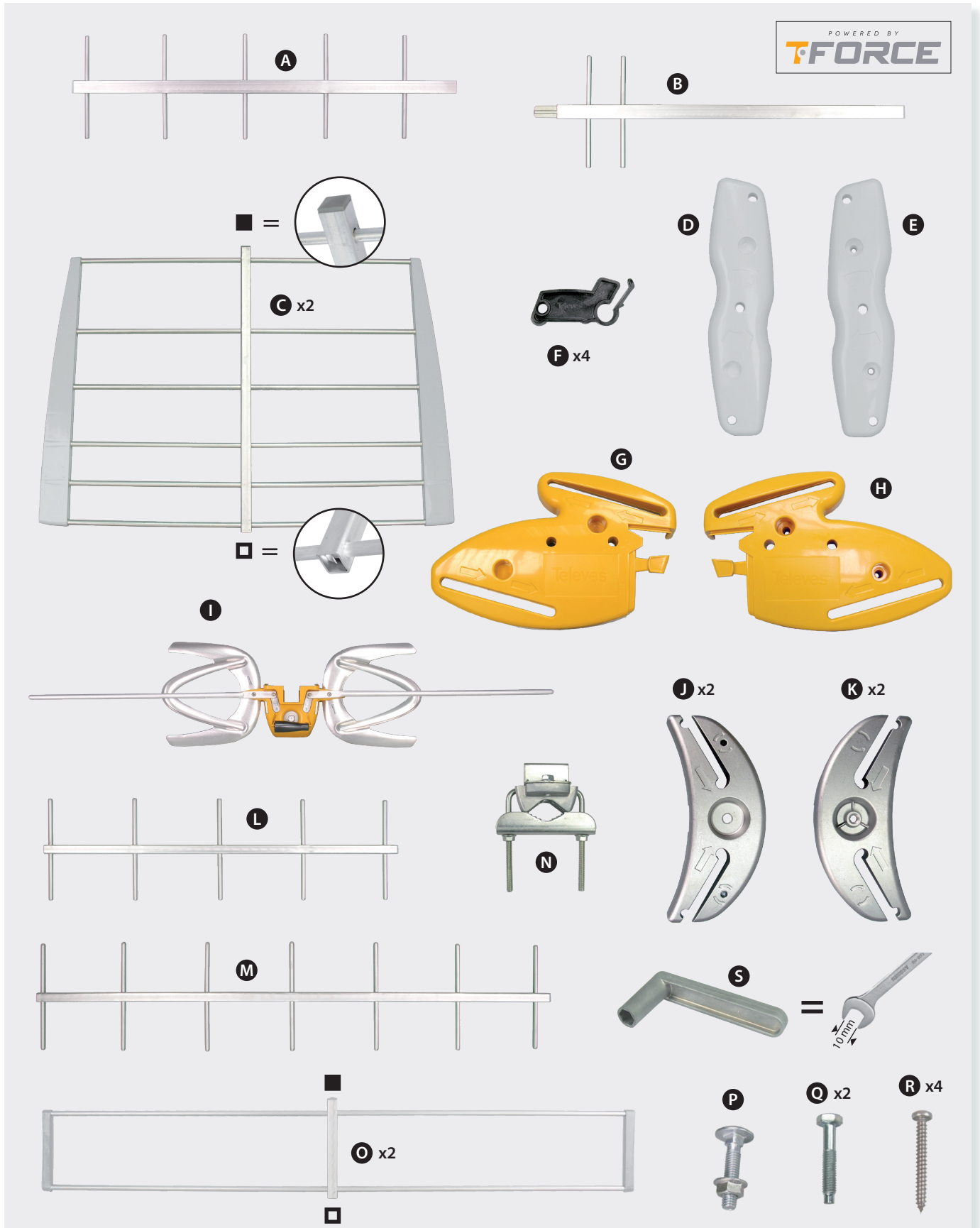


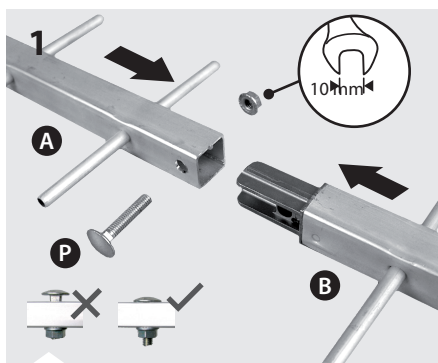
Kit Antenna / Kit Antena

Ref. 149484 (Ant-149431 + PSU-550104 + **S**)

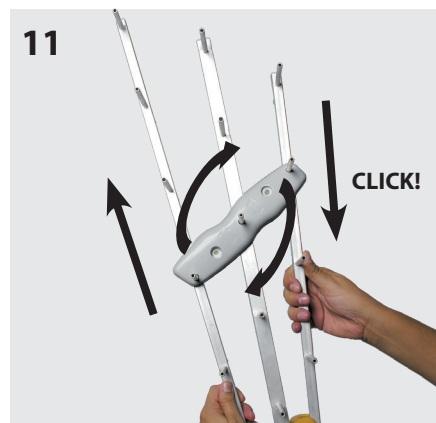
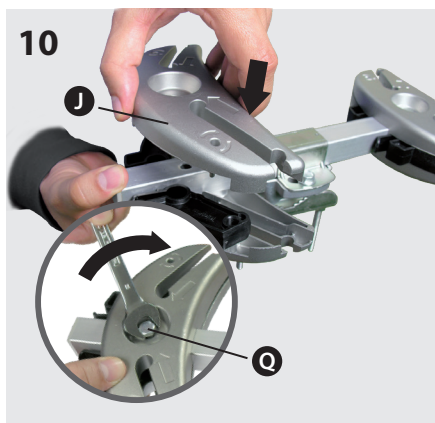
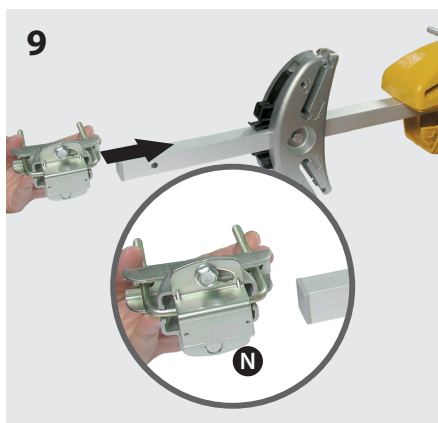
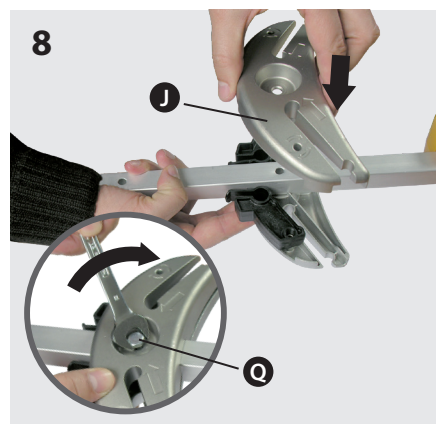
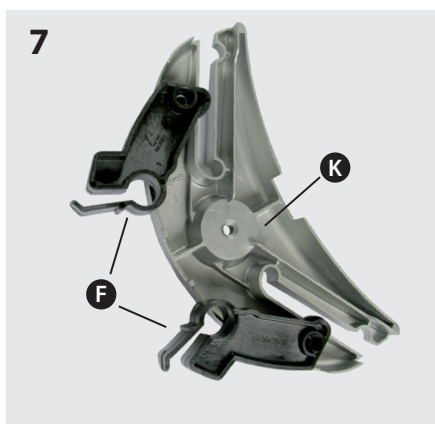
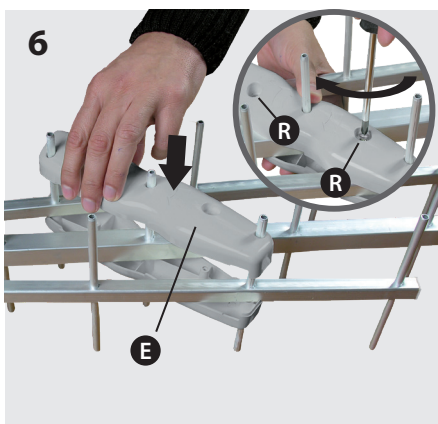
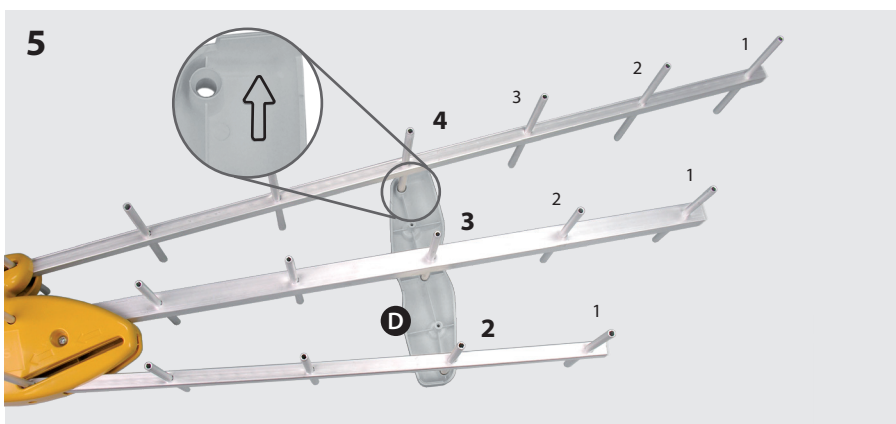
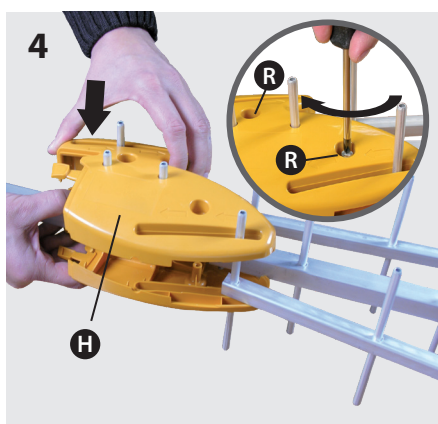
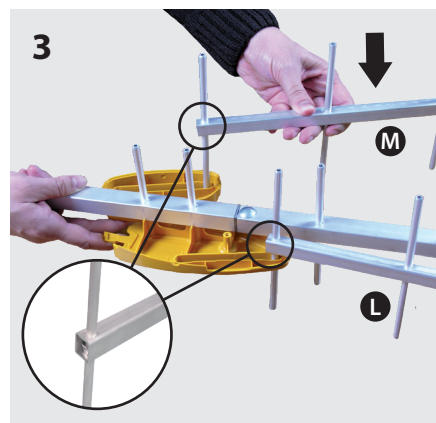
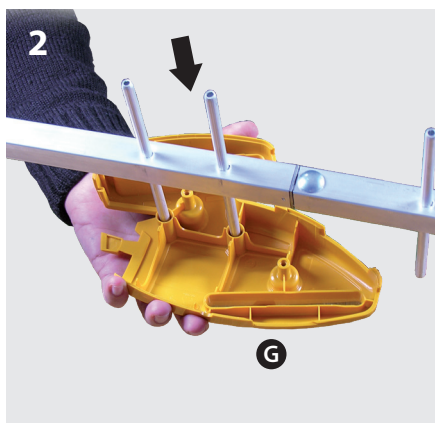
DATBOSSMIX

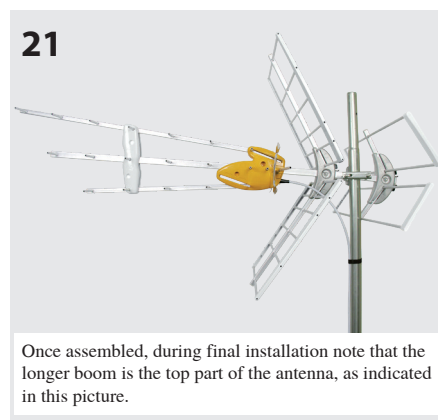
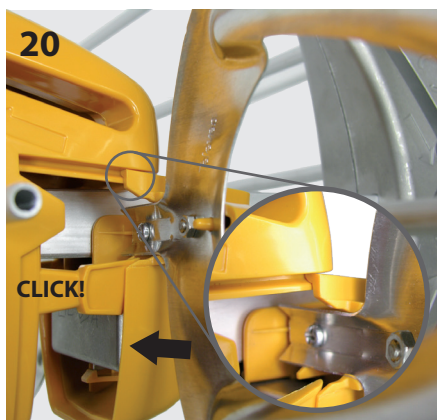
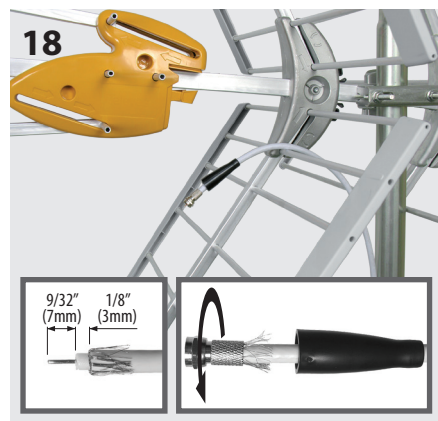
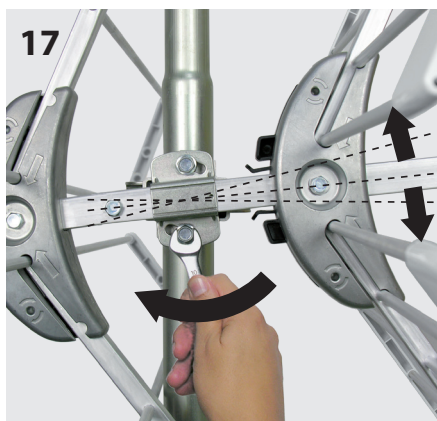
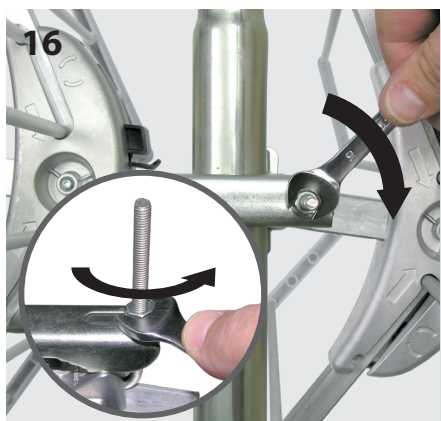
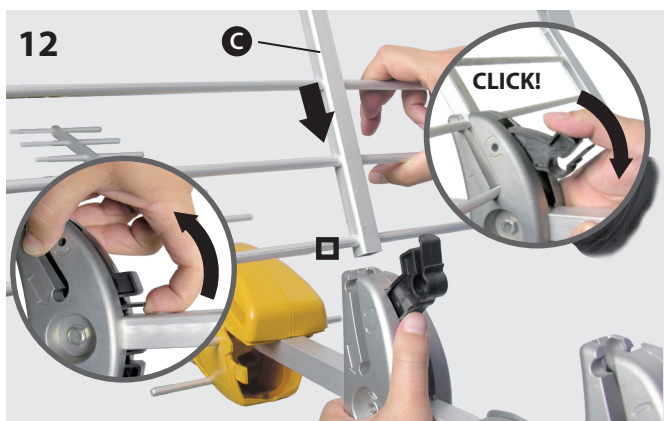


Antenna mounting / Montaje de la antena



Tighten the carriage bolts (P) until the square neck sinks into the aluminum and the bolt head sits flush with the boom.





Technical specifications of the intelligent antenna (it must be powered)
Características técnicas de la antena inteligente (debe estar alimentada)

Ref.	Ref.	149484	
Working band	Banda de trabajo	MHz	174 - 216 (CH7 - CH13) 470 - 608 (CH14 - CH36)
Mode	Modo		INTELLIGENT (BOSS ON)
Gain	Ganancia	dBi	36.5 40
Output level	Nivel de salida		Auto ⁽¹⁾
Signal level of use (recomm.)	Nivel de señal de uso (recomend.)	dBμV	< 75
Powering voltage	Tensión de alimentación	V===	12
Consumption	Consumo	mA	70 (max) @12V===
Beamwidth	Ancho de haz	°	60 40
F/B ratio	Relación D/A	dB	>15 >20
Wind load	Carga al viento	N	120 (@ 80 miles/h) 165 (@ 93 miles/h)

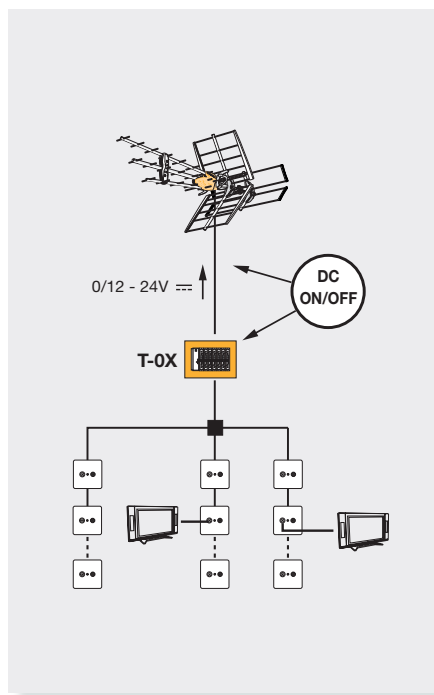
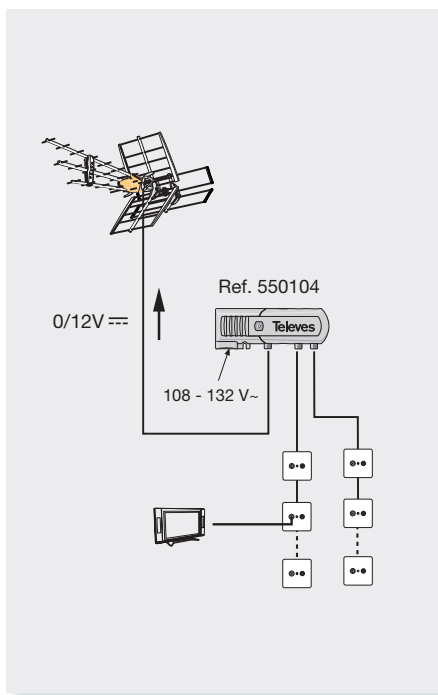
Watch TFORCE video



A00392

⁽¹⁾ The gain is automatically adjusted according to the output level / La ganancia varía automáticamente en función del nivel de salida.

Application examples / Ejemplos de aplicación



Antenna Selector

This antenna works in the following zone(s).

See the TV Antenna Selector Map to find the zone in which you live.

Antenna Selector

This antenna works in the following zone(s).

See the TV Antenna Selector Map to find the zone in which you live.

Safety Instructions:

LIGHTNING PROTECTION

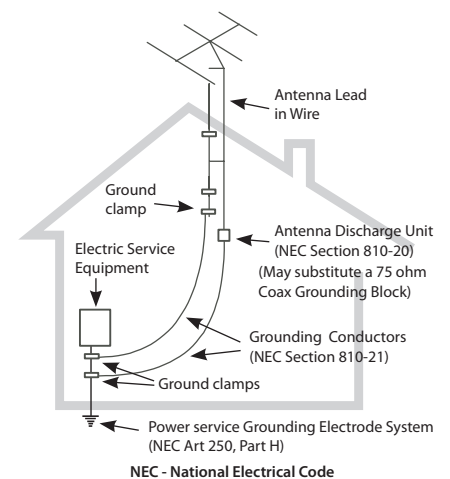
- ♦ If installed outdoors, be sure the antenna system is grounded so as to provide protection against voltage surges and built-up static charges. Section 810 of the National Electrical Code ANSI/NFPA70, or CSA C22.1 sections 10, 16, and 54, of the Canadian Electrical Code, provide information with respect to proper grounding of the mast and supporting structure, grounding of the antenna lead-in wire to an antenna discharge unit, size of grounding conductors, location of antenna-discharge unit, connection to grounding electrodes, and requirements for the grounding electrode (see figure and instructions).
- ♦ Mount the lightning arrester or 75 ohm coaxial grounding block as close as possible to where the 75 ohm coaxial cable downlead enters the house.
- ♦ The ground wires for both the mast and the downlead should be copper or aluminium wire, number eight (8) or larger.

- ♦ The downlead wire from the antenna to the lightning arrester and the mast ground wire should be secured to the house, spaced from four (4) to six (6) feet apart.
- ♦ In the case of a "ground up" antenna installation it may not be necessary to ground the mast if the mast extends four or more feet in the earth. Consult a TV serviceman for the proper depth in your location.

WARNINGS

- ♦ To prevent fire or shock hazard, do not expose the included power supply to rain or moisture.
- ♦ Installation of off-air antennas near power lines is dangerous. For your safety, follow the installation instructions.
- ♦ Any alteration or modification to the product or usage not in accordance with product instructions voids the warranty.

Example of antenna grounding as per National Electrical Code, ANSI/NFPA 70



DECLARACIÓN DE CONFORMIDAD ■ DECLARATION OF CONFORMITY ■ DECLARAÇÃO DE CONFORMIDADE ■ DECLARATION DE CONFORMITE ■ DICHIARAZIONE DI CONFORMITÀ ■ DEKLARACJA ZGODNOŚCI ■ KONFORMITÄTSEKLRÄRUNG ■ ΠΙΣΤΟΠΟΙΗΤΙΚΟ ΣΥΜΜΟΡΦΩΣΗΣ ■ FÖRSÄKRAN OM ÖVERENSSTÄMMELSE ■ ДЕКЛАРАЦИЯ СООТВЕТСТВИЯ ■ بيان المطابقة

► <https://doc.televes.com>

Televes USA LLC. 16596 E. 2nd Avenue Aurora, CO 80011 USA televes.usa@televes.com www.televes.com

010306831-000