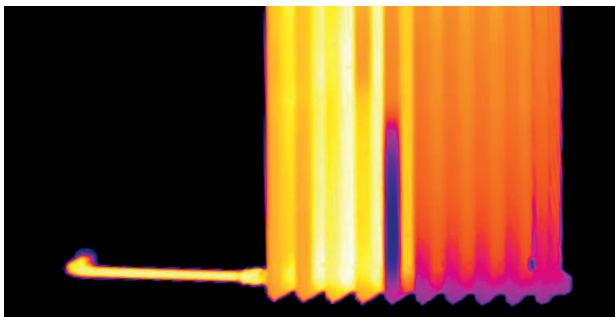
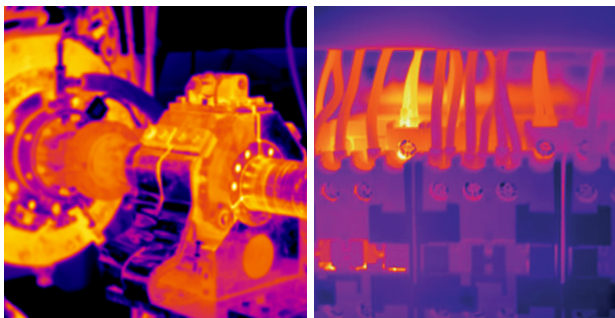


Indispensable tools to meet your challenges.

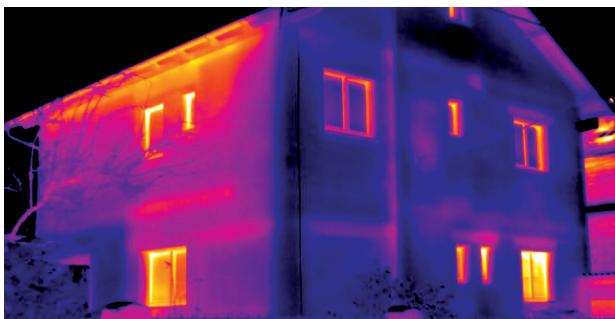
In contracting as well as in industry, you profit considerably from the use of a thermal imager: You measure temperatures precisely and without contact, work more efficiently and can impressively document the quality of your work.



Heating systems: Test radiators, locate pipes and leaks



Industrial plants: Preventive maintenance of machines and electrical installations.



Building analysis: Detect heat loss, building moisture and mold.

Models and accessories.

Be sure. 

Be sure. 

	Order no.
testo 865s Thermal Imager with USB cable, power supply, lithium-ion rechargeable battery, professional software, commissioning instructions, calibration protocol and case	0560 8651
testo 868s Thermal Imager with Wi-fi module, USB cable, power supply, lithium-ion rechargeable battery, professional software, 3 x testo ε-markers, commissioning instructions, calibration protocol and case	0560 8684
testo 871s Thermal Imager with BT/Wi-Fi module, USB cable, power supply, lithium-ion rechargeable battery, professional software, 3 x testo ε-markers, commissioning instructions, calibration protocol and case	0560 8716
testo 872s Thermal Imager with BT/Wi-Fi module, USB cable, power supply, lithium-ion rechargeable battery, professional software, 3 x testo ε-markers, commissioning instructions, calibration protocol and case	0560 8725
testo 605i Smart Probe Thermohygrometer with smartphone operation, including batteries and calibration protocol	0560 1605
Spare rechargeable battery	0554 8721
Battery-charging station	0554 1103
Carrying case for testo 865s/868s/871s/872s and spare battery made of durable nylon with detachable shoulder strap and loop for belt attachment.	0554 7808

Subject to change, including technical modifications.



Next level thermography.

The new testo 865s/868s/871s/872s thermal imagers impress with the best image quality in their class.

www.testo.com

2981 XXXX/b&b/msp/04.2022



Committed to innovation.

For over 30 years, we have been developing and manufacturing thermal imagers in Germany for a wide range of requirements. Our latest four imagers offer the right model for every application. They are not only innovative, but well thought-out, and easy to operate – and they impress with the best-in-class image quality.



Top features of the Testo thermal imagers

- + **Informative thermal images:**
High resolution and great NETD
- + **Smart and networked:**
Connection of radio probes and testo Thermography App
- + **Intuitive operation:**
modern tile optics and quick select button

The new thermal imagers in comparison



testo 865s



testo 868s



testo 871s



testo 872s

Overview

Infrared resolution	Number of pixels: The more the better	160 x 120 pixels (19,200 pixels)	160 x 120 pixels (19,200 pixels)	240 x 180 pixels (43,200 pixels)	320 x 240 pixels (76,800 pixels)
testo SuperResolution	Fourfold number of pixels	320 x 240 pixels (76,800 pixels)	320 x 240 pixels (76,800 pixels)	480 x 360 pixels (172,800 pixels)	640 x 480 pixels (307,200 pixels)
Thermal sensitivity (NETD)	Smallest possible displayable temperature difference: The smaller the better	0.18 °F (0.10 °C) (100 mK)	0.14 °F (0.08 °C) (80 mK)	0.14 °F (0.08 °C) (80 mK)	0.09 °C (0.05 °C) (50 mK)
Measuring range		-4 to 536 °F (-20 to +280 °C)	-22 to 212 °F (-30 to +100 °C) / 0 to 1,202 °F (0 to +650 °C)	-22 to 212 °F (-30 to +100 °C) / 0 to 1,202 °F (0 to +650 °C)	-22 to 212 °F (-30 to +100 °C) / 0 to 1,202 °F (0 to +650 °C)
Focus	Image focusing	Fixed focus	Fixed focus	Fixed focus	Fixed focus
Connection of external measuring instruments (via Bluetooth)	Connection to other Testo measuring instruments	–	–	testo 605i Thermohygrometer Smart Probe	testo 605i Thermohygrometer Smart Probe
Connection to free testo Thermography App (by Wi-Fi)	Fast and easy image analysis, creation and sending of short reports, remote control of the imager	–	✓	✓	✓
PC software testo IRSoft	Free, licence-free software for comprehensive analysis and reporting	✓	✓	✓	✓
Functions					
Integrated digital camera (5MP)	Real image is stored with thermal image	–	✓	✓	✓
Humidity mode	Evaluate mold risk with “traffic-light” scale	–	–	✓	✓
testo ScaleAssist	Automatic contrast adjustment for optimum evaluation of building shell	✓	✓	✓	✓
Laser marker	Shows exact position of the laser and the corresponding temperature measurement value in the imager display	–	–	–	✓