

TOUCHIT™ TECHNOLOGIES



INTERACTIVE LED | DIGITAL SIGNAGE | IP-RATED PRODUCTS



TOUCHIT LED DUO™

Touchboards

205 Westwood Ave, Long Branch, NJ 07740
Phone: 866-94 BOARDS (26273) / (732)-222-1511
Fax: (732)-222-7088 | E-mail: sales@touchboards.com

The Future of large-format interactive touch displays

Utilizing the latest in display technology, the TouchIT LED Duo is a range of quad input multi-gesture interactive displays. Connect your computer and with no drivers or calibration required, you have full mouse control of your computer at your fingertips from the LED. Control, annotate or surf the web, all are possible via the TouchIT LED Duo.

32" 42" 46" 55" 65" 70" 84"

HIGH DEFINITION

Our range of LED Displays are all High Definition displays.

- 1920 x 1080 Resolution
- Full HD



WHY CHOOSE AN INTERACTIVE LED?

- No Shadow
- Brighter & Clearer Image
- Easier to Install
- High Definition (HD)
- Low Maintenance
- Long lifespan for an LED
- Truly plug and play

WHY CHOOSE THE TOUCHIT LED DUO?

- 32" to 84"
- No Calibration & No Driver
- Multi Touch - 4 Point
- Perfect for gestures in both MAC & Windows
- Slim Profile
- 4mm & 5mm Tempered Glass
- Easy to clean
- Durable
- 3 Year Warranty





TOUCHIT LED DUO PRO™

Full HD, touch-sensitive, 4 point touch, interactive LED with integrated PC.

The TouchIT LED Duo Pro combines a Full HD touch-sensitive display with a server grade integrated PC to create the ultimate interactive product.

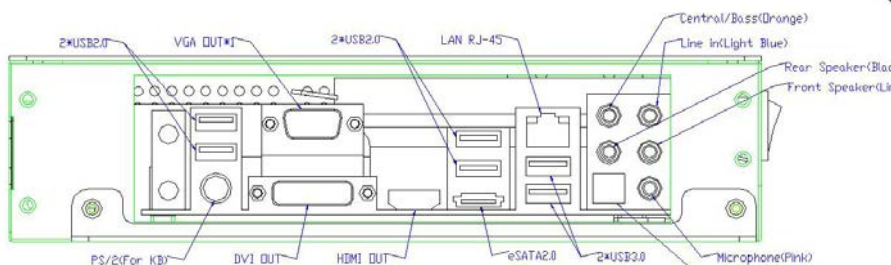
Operational straight out of the box, simply connect the unit to a power outlet (socket) and you are ready to go. There is nothing to install or calibrate - it just works! With a server grade PC and a commercial grade panel, the TouchIT LED Duo pro is designed for 24/7 use - ideal for all your presentation requirements.

- Commercial Grade Panel and Server Grade Integrated PC
- Ideal for Education
- Perfect for the Board Room
- 42" to 84" Models Available
- Includes Wizteach Software



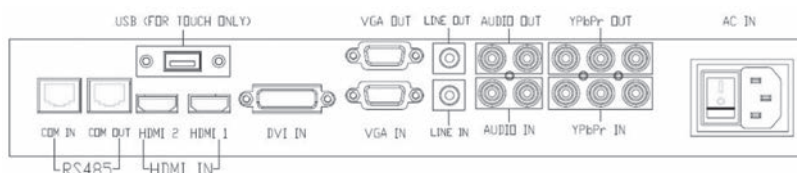
TOUCHIT LED DUO PRO - INTEGRATED PC GUIDE

- Windows 7 or Windows 8 64 bit OEM professional
- 8GB system memory
- 500GB SATA hard disk
- USB 2.0 & 3.0 support
- Intel embedded HD graphics
- Wired and wireless network (802.11N)
- Intel i5 Processor



TOUCHIT LED DUO & LED DUO PRO CONNECTION GUIDE

The diagram below shows the Inputs and Outputs available.



Inputs

- USB (for touch only)
- 2 x HDMI
- 1 x DVI
- 1 x VGA
- 1 x Line In
- 1 x Audio In
- 1 x YPBPr In
- 1 x RS485 (RS232 Compatible)

Outputs

- 1 x VGA
- 1 x Audio Out
- 1 x YPBPr Out
- 1 x RS485
- (RS232 Compatible)

TOUCHIT "WIS"™

What is TouchIT "WIS"?

TouchIT "WIS" (Wireless Interactive Screen, pronounced "WIZ") is a wireless presentation system. TouchIT "WIS" allows a group of students in a class or business professionals in a meeting room to take turns in presenting from their Windows or MAC computer or even a mobile device, which are connected wirelessly to the TouchIT LED Duo transmitting in full HD!

What does TouchIT "WIS" do?

If you have wireless handheld devices such as Android cell phones and tablets, iPads or iPhones, through TouchIT WIS you are able to connect these devices to your computer to send content and also control the LED. TouchIT "WIS" also allows wireless communication of both the touch feature on the LED and the image display from any connected computer. Users are able to control their own machines from the main LED display without any cables.

Why should I use TouchIT "WIS"?

TouchIT "WIS" adds an extra dimension to your interactive LED screen. Rather than only having front of class or front of boardroom interaction, you now have whole room interactivity.

- Wireless LED Display (46" to 84"). (retrofit unit supports 32" & 42")
- Total Wireless Connection – no HDMI, VGA or USB cables required.
- Control the LED from your Tablet Device or Smartphone.
- Present wirelessly from any MAC or PC.
- Display up to 4 PCs/MACs simultaneously.
- Broadcast presentation slides to all connected devices.
- Integrated Wireless Access Point to your network.

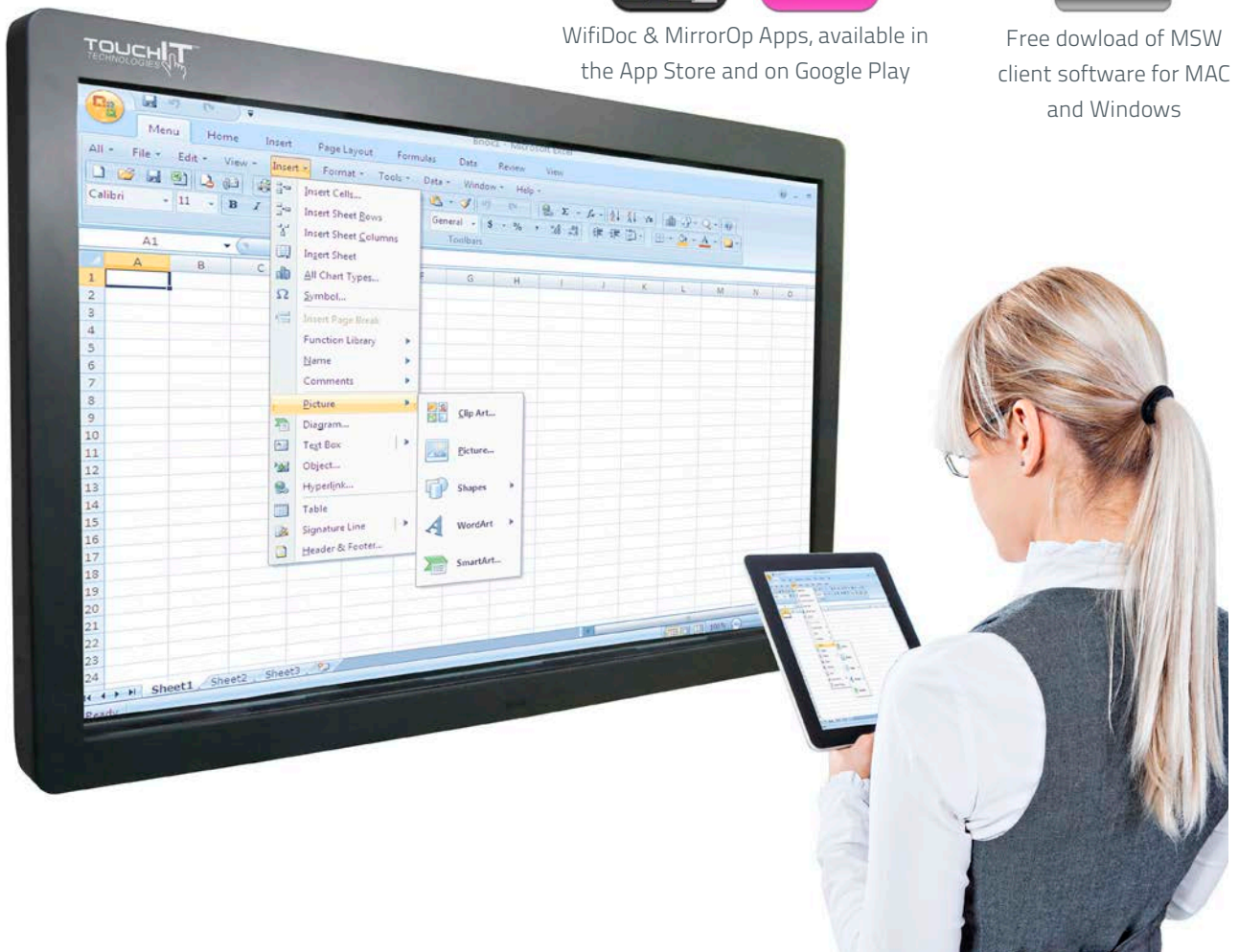


MSW-Interactive



WifiDoc & MirrorOp Apps, available in the App Store and on Google Play

Free download of MSW client software for MAC and Windows



"WIS" FEATURES

Control your TouchIT LED from a Smartphone or Tablet

By connecting your Smartphone or Tablet to TouchIT "WIS" you can have full control of the LED display from the device. What you see on your device is what you see on the TouchIT LED display. Move your mouse on the device and it moves on the LED display and vice versa - full mouse control from a portable device. TouchIT "WIS" embraces the concept of BYOD (Bring Your Own Device) and takes it to the next level.



Display wirelessly from any computer

The integration of TouchIT "WIS" into the LED Duo range of interactive displays enables the wireless transmission of a HD display and the wireless transmission of the multi-touch functionality from the screen to any of your connected participants' computers, Smartphones or Tablet Devices.

Display any 4 computers on the same TouchIT LED screen

The TouchIT "WIS" will start displaying the screen of any connected device when the screen sharing application is installed. However, with Conference Control a user can be set as moderator (protected by a password) and thus can control who is displaying their screen and where on the LED it is displayed. TouchIT "WIS" can display any four computers, side by side, on the LED Duo display. This is ideal for a comparison of students' individual work, group collaboration, or document sharing and brainstorming in a business environment.



Broadcast presentation slides to Smartphones and Tablet Devices

A class or audience can open their browser, enter the IP-address of the TouchIT "WIS" and select 'BrowserSlides'. Here the audience will find current screenshots from the live presentation. The audience can then choose to save the screenshots as an image file and use third party applications to annotate the slides and save them to their device. This means that the class or audience no longer needs to take notes as the slides are broadcast to the users own devices. It's quick, efficient and simple - no more handouts needed!

Present photographs or a PowerPoint presentation from your Smartphone or Tablet Device.

Connect your Smartphone or Tablet Device to TouchIT "WIS" and through the WifiDoc Application you can display your own photographs on the TouchIT LED Display, and even deliver a PowerPoint presentation from your device.



Upgrade your existing TouchIT LED to TouchIT "WIS"

TouchIT "WIS" Upgrade is a standalone unit that attaches to your existing TouchIT LCD Duo, LCD Duo Pro or LED Duo to add the Wireless Interactive Screen functionality to that unit. It is simple and easy to install to add the benefits of TouchIT "WIS" to your existing hardware.

TOUCHIT 84™

SIZE REALLY DOES MATTER!

The 84" range from TouchIT Technologies is a large format, multi-touch, interactive screen which is perfect for the classroom.

Available in 4 point touch with integrated WIS (Wireless Interactive Screen) the 84" range from TouchIT Technologies covers all your requirements. With a high resolution image (max 3840 x 2160) and high contrast ratio 1600:1 and Anti-Glare tempered glass, it really is the perfect front of class presentation tool.

84"

4 Point Touch

4 Point WIS



TOUCHIT FUSION™

THE 3-IN-1 PRODUCT

Incorporating an integrated PC, 4 point or 32 point touch LED and an electric mobile stand, the TouchIT Fusion is three products in one. An Interactive Easel, an Interactive Table and an Interactive LED.

Transforming the TouchIT Fusion from one mode to another could not be any easier - everything is controlled at the touch of a button. The TouchIT Fusion is the ideal product for group collaboration or cluster group learning.

The TouchIT Fusion comes in two size options, 42" or 55". Choose between either the ground breaking 32 point or 4 point touch models.



42" 55"

4 Point Touch

32 Point Touch

Collaboration

Supplied with the Snowflake multi-touch suite of interactive software, the TouchIT Fusion is the ideal collaboration product

- 42" & 55" LED Models
- 4 Point & 32 Point Models
- Integrated PC (See page 3)
- Electric Height Adjustable Stand
- Electric Tilting Stand
- Ideal for group work
- Anti-glare tempered glass finish

PART CODE	UPC CODE	DESCRIPTION
FUSION42LED	0608641029901	42", 4 Input, integrated PC
FUSION55LED	0608641029895	55", 4 Input, integrated PC
32FUSION42LED	0608641029918	42", 32 Input, integrated PC
32FUSION55LED	0608641028454	55", 32 Input, integrated PC

MANUAL HEIGHT ADJUSTABLE STAND

Our Mobile Stand is specifically designed for the LED Duo range of interactive displays and provides a mobile mounting option. The stand is manually height adjustable with five fixed positions.



Suitable for use with:

- 32"
- 42"
- 46"
- 55"
- 65"
- 70"
- 84"

Part Code:
MOBWMK



ELECTRIC HEIGHT ADJUSTABLE STAND

The MotoWMKII is able to raise up to 150kgs (330lbs) 700mm (27.5") at the touch of a button and is suitable for use with the entire range of LED - 32" to 84".

Suitable for use with:

- 32"
- 42"
- 46"
- 55"
- 65"
- 70"
- 84"

Part Code:
MOTOWMK

ELECTRIC HEIGHT ADJUSTABLE STAND

TouchIT LED Duo Stand Lift is designed for the 46" to 70" LED DUO/ DUO PRO. Lightweight and slim in profile, it also has an optional laptop shelf (part number 0608641029086) and can raise the LED 500mm (19.7").

Optional Laptop Shelf also available.



Suitable for use with:

- 46"
- 55"
- 65"
- 70"

Part Code:
1542301



Part Code:

WMK-32 WMK-65-70
WMK-42-46-55 WMK-84

WALL MOUNTS

Our wall mounts are specifically designed to attach the LED Duo, and Duo Pro range to a wall. They are designed to cope with both the weight of the units and the fact that the screens will be touched causing potential movement. Our wall mounts hold the units firmly in place. (Please be aware that other mounts may not be rated for the weight or specific use with our products.)

- 32"
- 42"
- 46"
- 55"
- 65"
- 70"
- 84"

TABLE TOP STANDS

Our table top stands are specifically designed for the LED Duo and Duo Pro range so they can be used on a table or desk. The TouchIT Table Top Stand is ideal for displaying the TouchIT LED Duo or Duo Pro on top of a cabinet or indeed a table or shelf where wall mounting is not an option.



(Wall Mounts & Table Top Stands available for all sizes)

Part Code:

DTS-42-46-55 DTS-84
DTS-65-70

LED APPLICATIONS

WHERE CAN YOU USE THE LED?



EDUCATION

Any teacher, professor or educator can easily during the class take the USB and HDMI cables from the Interactive LED, connect those two cables to their laptop or PC, open the software, and have a high quality, high definition teaching tool to convey their lesson plan or brain storming session to the class or work group. By simply using your finger or any stylus to touch the Interactive LED, you instantly have a mouse at your "fingertips" to communicate your ideas. Perfect for Mac, Linux or Windows-based computers.

CORPORATE

No matter what business you have, we all want to collaborate effectively, present, communicate, take notes, save those notes and then distribute them via email. The TouchIT LED Duo is perfect for any boardroom or meeting room and the possibilities for what you can achieve with the unit are are endless.



MEDICAL

The TouchIT LED Duo is the ideal tool for health care professionals to use in the medical environment. Not only is it ideal for patient diagnosis and explanation, but it is the perfect tool for exploring and annotating xrays as well being useful as an input device for your patient management system.



DIGITAL SIGNAGE

The TouchIT LED Duo is ideal for touch-based digital signage. You can engage and communicate to your customers with the utmost flexibility and convenience. Whether you want to run the screen in portrait, landscape or even horizontally in a table wayfinding application, the TouchIT LED Duo is the ideal hardware for your touch-based digital signage needs.



APPLICATIONS FOR DIGITAL SIGNAGE



205 Westwood Ave, Long Branch, NJ 07740
 Phone: 866-94 BOARDS (26273) / (732)-222-1511
 Fax: (732)-222-7088 | E-mail: sales@touchboards.com



RETAIL, HOSPITALITY & LEISURE

No longer do you need to create and distribute notices and signs around your premises. With TouchIT Digital Signage in place, your customers and guests can be provided with up-to-the-minute information whenever and wherever they need it. Show today's restaurant menu, remind members about forthcoming events, or simply promote further services. The system is as flexible and as versatile as you need it to be.

EDUCATION

For schools, colleges and universities, the TouchIT Digital Signage provides a flexible means of engaging and communicating with pupils and staff, but can help you make the most cost-effective use of valuable resources. With one or more large format screens, signage players and our software at your disposal, you can communicate vital messages quickly and easily throughout your school or college.

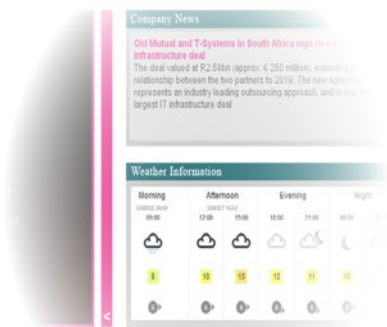


HEALTHCARE

Use the TouchIT Digital Signage as an on-screen patient messaging system, designed especially for Primary Care Providers and General Practice. It provides a highly flexible and versatile way of keeping patients and other service users fully informed and updated while waiting to be seen by your practice staff.

CORPORATE

Your business needs to project the right image to its clients and visitors. Just as importantly, vital marketing messages need to be shared with anyone who comes into your offices and other business sites. Use the TouchIT Digital Signage system as a reception-TV information system for corporate offices that puts you in control of how your business is perceived by visitors.



Welcome to T System
 report to recent

TOUCHIT PLAYER™

DIGITAL SIGNAGE

Built on Intel NUC Technology with an Intel processor, the Digital Signage Player from TouchIT Technologies despite only being 11cm x 11cm (4" by 4") certainly packs a punch and is the ultimate out-of-the-box signage solution !

With a 1.8ghz Intel processor with integrated high performance HD 4000 graphics, the TouchIT Digital Signage Player supports DUAL screen Full HD (1920 by 1080) signage as standard, simultaneously using both the HDMI outputs.

Fitted with the Windows® operating system and built in Wifi, the TouchIT Digital Signage Software, the player is easy to add to any network and directly to a network domain. It also comes with its own mounting bracket to allow easy fixing to walls and the rear of signage screens.

The Digital Signage Player from TouchIT Technologies is a complete out-of-the box signage solution. The same player can support a single screen installation as well as being a remotely controlled, centrally managed full digital signage roll-out across a large organization and multiple sites.

Small, powerful, cost effective and scalable, this is an ideal player for multi-zoned digital signage where space and budget are limited. The TouchIT Player comes pre-installed with the TouchIT Digital Signage Software.



VESA Mount
included



PART CODE	UPC CODE	DESCRIPTION
DSPLAYER	0608641029987	Digital Signage Player

DIGITAL SIGNAGE SOFTWARE



Turn any screen into eye-catching digital signage with just a few clicks of your mouse!



- Drag and drop creation
- Unlimited content zones
- Use almost any file formats
- Quick and easy updates
- Live content updates
- Remote management & updates
- **Touchscreen compatible**
- Use your own PC
- Standalone player available



Digital Signage Made Easy!

Creating digital signage content can be time consuming, difficult to integrate and only for the most technical amongst us. With the TouchIT Digital Signage Software, we believe we have one of the world's easiest to use software that in minutes, signage can be created to visually convey your message.

Supporting multiple movie formats, animated images, web pages, PowerPoint®, news feeds and much more simultaneously, our software is the ultimate digital signage tool.

As well as being one of the most fully featured digital signage products in the world, our software is also the simplest. You simply choose the media type you want and 'add a zone' of it on to your Windows® desktop. Move it with your left mouse, resize it with your right mouse, then 'add another zone'. Keep going until you have your screen layout. It couldn't be easier. Each zone 'plays live' as you add it, so you can instantly see how your design looks.

Its ease of use makes it ideal for those just getting started with digital signage. Creation of layouts is quick and simple with just a few clicks of your mouse.

Our software is 'resolution independent' and scales screen layouts automatically to the resolution you set on your player PC. Create and play your screens at HD resolution (1920 x 1080) if you like, but why stop there? Our players can operate at even higher resolutions and even operate in 'extended desktop' letting you create presentations at 3840 x 1080 or higher. Landscape or portrait, HD or HD+ and beyond, it's your choice.

What do I get with the software?

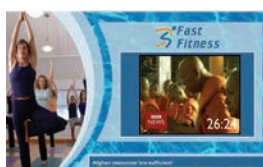
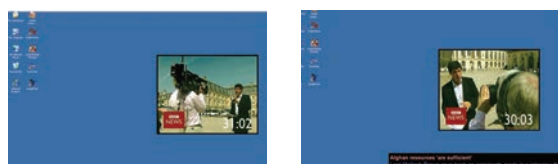
- A player and editor in one
- Unlimited content zones
- Sample Content
- Pre-prepared templates to customize
- Web updating functionality
- Built in web-server

3 Step Creation for your Digital Signage....

Step 1 Open the software.

Step 2 Drag and drop in your content and use your mouse to resize and position in place.

Step 3 Add a background image and you are ready to go!



INCORPORATE ALMOST ANY FILE FORMAT!

- Unlimited Multi-Zone media play-out
- Live drag and drop screen layout creation
- Photos / Images / Entire folders
- Live 'Web page windows'
- Flash® Animations
- RSS News
- RSS and Picture RSS
- Streaming video
- Movies AND Live TV
- Microsoft® PowerPoint Presentations
- Kiosk - Touch screen support as standard
- Play different layouts @ different times of day
- Multi-head graphics capable
- Audio files and volume controls
- Resolution independent



OUTDOOR IP-RATED PRODUCTS

Products for any weather!

Looking to use an LED for outdoor signage or for an outdoor touch applicaton? No problem. Would you like to use digital signage in harsh environments such as at the beach where there are high salt levels or in open exposed areas with bright sunlight? No problem. The TouchIT range of outdoor products will suit your needs.

Our niche is being able to custom build to your design requirements and application. Whether this be small production runs or large scale roll outs, talk to us and we can help design your outdoor product. We also offer a standard range of IP65 panels for outdoor applications available with or without touch functionality.



Custom Design & Build Process

Utilizing a design-build process, we work with you to design, develop and build a product specific to your requirements, environmental conditions and budget.

Whether you need a touch enabled product or not, we have a vast amount of experience with LED-based technology for both indoor and outdoor use across a broad range of environmental conditions.



IP-RATED PRODUCTS

Large format displays with and without touch functionality

This IP65 rated series of monitor is built to operate in harsh and hostile environments and survive the elements. The front of the panel is IP65 rated to combat water, humidity and dust whilst the casing is built to protect the unit from the elements. Internal fans can be activated automatically to drive heat out to keep the unit at a suitable working temperature. The unit also benefits from a strong, rigid structure and specially treated glass to protect the panel from sunlight.

The unit has an auto power on by signal feature and can be controlled by RS485, or by the remote handset.

42" 55"

SPECIFICATIONS

- Panel Size (Diag.) 42 & 55 inch
- Native Resolution 1920 x 1080
- Brightness 700-1000 nits
- Contrast 6000:1
- Viewing Angle 178° / 178°
- Response Time 6.5ms
- Backlight Unit LED
- Backlight Life 50,000 Hours
- Operating Temp. 0-50
- Operating Humid. 10-90% RH
- Input Voltage AC100~240V 50/60Hz
- Power Consump. < 150 Watts
- Standby Power < 2 Watts
- Input Connector VGA x1 DVIx1 HDMI x 2 YPbPr x 1 audio in
- Output Connector VGAX1 YPbPr x 1 audio out
- Screen Control RS-485 & Remote Handset
- Ambient Detection Auto Ambient Light Detection
- Net Weight > 50 kgs (110lbs)
- Dimension (WxHxD) (42") 1157 x 751 x 223 mm
45.55" x 29.57" x 8.78"
- Sun readable Yes
- Touch Technology
- Infrared single touch (Optional)



WHY CHOOSE AN INTERACTIVE IP65 UNIT?

- Outdoor Use
- Wet Conditions
- With or without touch functionality
- High Brightness
- Sunlight readable
- 42" & 55" Available

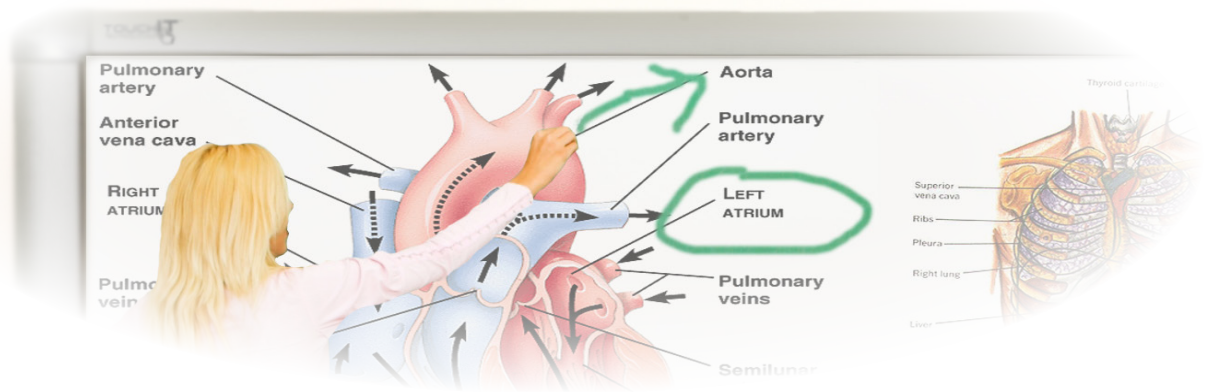
.....

IP RATINGS EXPLAINED

The IP Code (Ingress Protection Rating sometimes also interpreted as International Protection Rating) classifies and rates the degree of protection provided against both objects and water entering a unit. For example, body parts like hands and fingers, dust, and in the case of mechanical casings, this includes accidental contact with water.

The standard aims to provide users more detailed information than vague marketing terms such as waterproof. The digits (characteristic numerals) indicate conformity with the certain conditions. Where there is no protection rating with regard to one of the criteria, the digit is replaced with the letter X.

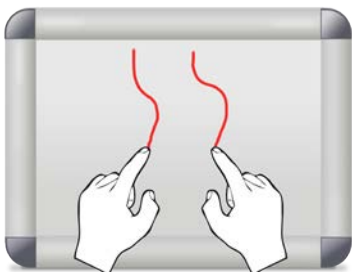
IP65 refers to the LED being Dust Tight, no ingress of dust should occur and it should have complete protection against contact. Furthermore, the LED offers protection against Water jets - Water projected by a nozzle (6.3 mm) against the enclosure from any direction shall have no harmful effects.



TOUCHIT BOARD™

The ultimate dual-purpose interactive whiteboard

TouchIT Board™ works in conjunction with your data projector and your computer to create a touch-based interactive whiteboard where you have full control of your PC from the Board. The TouchIT Board™ works just like a mouse allowing both left and right click functionality at the board.



- Dual Input Multi-Touch
- Enamel Steel Surface
- Dry Erase Marker Friendly
- No solvent cleaner required
- 30 Year Surface Guarantee
- 3 Year Warranty upon registration

78" 90"



(80" available on special request, minimum order quantities apply)

ELECTRIC HEIGHT ADJUSTABLE STAND



- Compatible with all TouchIT Interactive Whiteboards
- 700mm Height Adjustment (27.5")
- Wired remote control included
- Suitable for Short Throw & Ultra Short throw projectors with a throw distance of up to 1m (3.28')

Part Code:
STANDELEC (0608641028478)

MANUAL HEIGHT ADJUSTABLE STAND



- Compatible with all TouchIT Interactive Whiteboards
- 700mm Height Adjustment (27.5")
- Suitable for Short Throw & Ultra Short throw projectors with a throw distance of up to 1m (3.28')

Part Code:
STANDMAN (0608641028461)



TOUCHIT BOARD LITE™

LOW COST INFRA-RED MULTI-TOUCH INTERACTIVE WHITEBOARD

The TouchIT Board Lite is an entry level touch-based interactive whiteboard with multi-touch functionality and an enamel steel surface. Utilizing the latest in camera-based touch technology, the TouchIT Board Lite enables full control of your computer at the board. Touch for left click, touch and hold for right click, full mouse functionality at the touch of a finger.

- 78" & 87"
- Dry Erase Marker Friendly
- Low Cost, entry level IWB
- 3 Year Warranty

Part Code:

TBL78 (0608641029925) | TBL87 (0608641029932)

TOUCHIT EM BOARD™

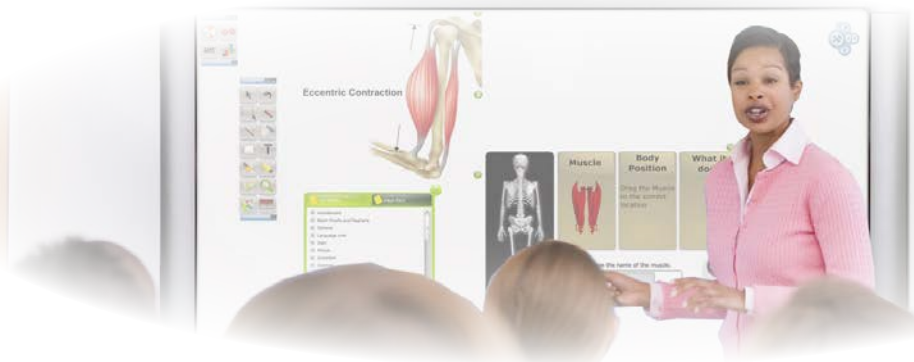
ELECTROMAGNETIC INTERACTIVE WHITEBOARD

The EM Board from TouchIT Technologies is a low cost, dual pen input, electromagnetic interactive whiteboard. Finished with an aluminum frame and an XPS surface - the EM Board has a high quality finish without the high price tag.

- Windows, MAC & Linux Compatible
- Electromagnetic Interactive Whiteboard
- Dual Pen Input
- 1 Year Warranty

Part Code:

TBEM78 (0608641029949)



SPECIFICATIONS

LED DUO / LED DUO PRO / TOUCHIT 84

	TouchIT LED Duo 32	TouchIT LED Duo 42	TouchIT LED Duo Pro 42	TouchIT LED Duo 46	TouchIT LED Duo Pro 46	TouchIT LED Duo 55
Part Code	0608641029376	0608641029703	0608641029765	0608641029710	0608641029772	0608641029727
Diagonal Size	32inch	42inch	42inch	46 inch	46 inch	55 inch
Panel Resolution	1920 x 1080	1920 x 1080	1920 x 1080	1920 x 1080	1920 x 1080	1920 x 1080
Native Resolution	1920 x 1080/60Hz	1920 x 1080/60Hz	1920 x 1080/60Hz	1920 x 1080/60Hz	1920 x 1080/60Hz	1920 x 1080/60Hz
Brightness (nits)	350	400	400	400	400	450
Contrast Ratio	3000:1	4000:1	4000:1	4000:1	4000:1	4000:1
Response Time (G to G)	6.5ms	6.5ms	6.5ms	6.5 ms	6.5 ms	6.5 ms
Aspect Ratio	0.672916667	0.672916667	0.672916667	0.672916667	0.672916667	0.672916667
Display Colors	16.7M	16.7M	16.7M	16.7M	16.7M	16.7M
Viewing Angle	178°/178°	178°/178°	178°/178°	178°/178°	178°/178°	178°/178°
Pixel Pitch (mm)	0.51075	0.4845 x 0.4845	0.4845 x 0.4845	0.53025 (H) x 0.53025 (V)	0.53025 (H) x 0.53025 (V)	0.63(W) x 0.21(H)
Multi-Touch Points	2 Points	4 Points	4 Points	4 Points	4 Points	4 Points
Supplier	AUO	AUO	AUO	AUO	AUO	AUO
Video Input (analogue)	VGA, Component	VGA, Component	VGA, Component	VGA, Component	VGA, Component	VGA, Component
Video Input (digital)	HDMI x2, DVI-D	HDMI x2, DVI-D	HDMI x2, DVI-D	HDMI x2, DVI-D	HDMI x2, DVI-D	HDMI x2, DVI-D
Video Output (analogue)	VGA, Component	VGA, Component	VGA, Component	VGA, Component	VGA, Component	VGA, Component
Audio Input	PC/Component	PC/Component	PC/Component	PC/Component	PC/Component	PC/Component
Speaker Output	6 Ohm	6 Ohm	6 Ohm	6 Ohm	6 Ohm	6 Ohm
USB (for touch)	USB	USB	USB	USB	USB	USB
Communication Input Port	RS485	RS485	RS485	RS485	RS485	RS485
Communication Output Port	RS485	RS485	RS485	RS485	RS485	RS485
Color Temp.	5700(warm), 6500(Warm), 9300(cool), USER	5700(warm), 6500(Warm), 9300(cool), USER	5700(warm), 6500(Warm), 9300(cool), USER	5700(warm), 6500(Warm), 9300(cool), USER	5700(warm), 6500(Warm), 9300(cool), USER	5700(warm), 6500(Warm), 9300(cool), USER
Progressive Scan	Yes	Yes	Yes	Yes	Yes	Yes
Stereo	Yes	Yes	Yes	Yes	Yes	Yes
Output	10W	10W	10W	10W	10W	10W
Built-in Speakers	10W x 2	10W x 2	10W x 2	10W x 2	10W x 2	10W x 2
Languages	English, Spanish, French, Dutch, Chinese(S), Chinese (T), Japanese.	English, Spanish, French, Dutch, Chinese(S), Chinese (T), Japanese.	English, Spanish, French, Dutch, Chinese(S), Chinese (T), Japanese.	English, Spanish, French, Dutch, Chinese(S), Chinese (T), Japanese.	English, Spanish, French, Dutch, Chinese(S), Chinese (T), Japanese.	English, Spanish, French, Dutch, Chinese(S), Chinese (T), Japanese.
Auto Ambience	Yes	Yes	Yes	Yes	Yes	Yes
Integrated PC	NO	NO	YES	NO	YES	NO
Service and Warranty	3 Years	3 Years	3 Years	3 Years	3 Years	3 Years
Power Consumption	< 75W	< 70W	< 70W	< 72 Watts	< 72 Watts	< 140 Watts
Sleep Mode	< 0.5W	< 0.75 Watts	< 0.75 Watts	< 0.75 Watts	< 0.75 Watts	< 0.75 Watts
MTBF	30,000 Hours	30,000 Hours	30,000 Hours	30,000 Hours	30,000 Hours	60,000 Hours
Packaged Dimensions (mm)	769.5 x 482 x 102.5	1152 x 238 x 783	1152 x 238 x 783	1243 x 238 x 841	1243 x 238 x 841	1246 x 238 x 948
(inches)	30.5" x 19" x 4"	45.34" x 9.37" x 30.83"	45.34" x 9.37" x 30.83"	48.94" x 9.37" x 33.11"	48.94" x 9.37" x 33.11"	49.06" x 9.37" x 37.32"
Packaged Weight (KG)	25kg	39.5kg	44.5kg	42.75kg	46.75kg	42.7kg
(lbs)	55.1lbs	87.08 lbs	98.10 lbs	94.25 lbs	103.06 lbs	94.14 lbs
VESA Mount	200 x 200	440*300mm	440*300mm	400 x 440	400 x 440	440 x 400
Green Approvals	Lead free, RoHS compliant	Lead free, RoHS compliant	Lead free, RoHS compliant	Lead Free, RoHS	Lead Free, RoHS	Lead Free, RoHS
Regulatory Approvals	CE/FCC	CE/FCC	CE/FCC	CE, FCC	CE, FCC	CE, FCC
Thickness of Toughened Glass	4mm	4mm	4mm	4mm	4mm	4mm
Unit W x D x H (mm)	727.4 x 20 x 429	1012 x 631.6 x 106.5	1012 x 631.6 x 106.5	1114.5 x 675 x 113.6	1114.5 x 675 x 113.6	1300 x 772 x 106.5
(inches)	28.6" x 0.8" x 16.9"	39.84" x 24.88" x 4.21"	39.84" x 24.88" x 4.21"	43.9" x 26.58" x 4.49"	43.9" x 26.58" x 4.49"	51.18" x 30.39" x 4.21"
Product Weight (NET)	21.7kg	33.4kg	37.4kg	34.9kg	38.9kg	50.15kg
(lbs)	47.84lbs	73.63 lbs	82.45 lbs	76.94 lbs	85.76 lbs	110.56 lbs

TouchIT LED Duo Pro 55	TouchIT LED Duo 65	TouchIT LED Duo Pro 65	TouchIT LED Duo 70	TouchIT LED Duo Pro 70	TouchIT LED 84 WIS
0608641029789	0608641029734	0608641029796	0608641029741	0608641029802	0608641030006
55 inch	65 inch	65 inch	70inch	70inch	84inch
1920 x 1080	1920x1080	1920x1080	1920 x 1080	1920 x 1080	3840 x 2160
1920 x 1080/60Hz	1920x1080 60Hz	1920x1080 60Hz	1920 x 1080/60Hz	1920 x 1080/60Hz	3840 x 2160 / 60Hz
450	360 (Typical)	360 (Typical)	350	350	350
4000:1	4000:1 (Typical)	4000:1 (Typical)	4000:1	4000:1	1600:1
6.5 ms	8ms	8ms	6ms	6ms	5ms
0.672916667	0.672916667	0.672916667	0.672916667	0.672916667	0.672916667
16.7M	1.07B	1.07B	1.07B	1.07B	1.06B
178° /178°	178° /178°	178° /178°	176° /176°	176° /176°	178° /178°
0.63(W) x 0.21(H)	0.744	0.744	0.802(H) x 0.802 (V)	0.802(H) x 0.802 (V)	0.9225(H) x 0.9225(V)
4 Points	4 Points	4 Points	4 Points	4 Points	4 Points
AUO	AUO	AUO	Sharp	Sharp	LG
VGA, Component	D-sub, Component	D-sub, Component	VGA, Component	VGA, Component	VGA, Component
HDMI x2, DVI-D	HDMI x2, DVI	HDMI x2, DVI	HDMI x2, DVI-D	HDMI x2, DVI-D	HDMI x1, DVI-D
VGA, Component	D-sub, Component	D-sub, Component	VGA, Component	VGA, Component	VGA, Component
PC/Component	PC/Component	PC/Component	PC/Component	PC/Component	PC/Component
6 Ohm	6 Ohm	6 Ohm	6 Ohm	6 Ohm	6 Ohm
USB	USB	USB	USB	USB	USB
RS485	RS485	RS485	RS485	RS485	RS485
RS485	RS485	RS485	RS485	RS485	RS485
5700(warm), 6500(Warm), 9300(cool), USER	5700(warm), 6500(Warm), 9300(cool), USER	5700(warm), 6500(Warm), 9300(cool), USER	5700(warm), 6500(Warm), 9300(cool), USER	5700(warm), 6500(Warm), 9300(cool), USER	5700(warm), 6500(Warm), 9300(cool), USER
Yes	Yes	Yes	YES	YES	YES
Yes	Yes	Yes	YES	YES	YES
10W	10W	10W	10W	10W	10W
10W x 2	10W x 2	10W x 2	10W x 2	10W x 2	10W x 2
English,	English,	English,	English,	English,	English,
Spanish, French,	Spanish, French,	Spanish, French,	Spanish, French,	Spanish, French,	Spanish, French,
Dutch, Chinese(S),	Dutch, Chinese(S),	Dutch, Chinese(S),	Dutch, Chinese(S),	Dutch, Chinese(S),	Dutch, Chinese(S),
Chinese (T),	Chinese (T),	Chinese (T),	Chinese (T),	Chinese (T),	Chinese (T),
Japanese.	Japanese.	Japanese.	Japanese.	Japanese.	Japanese.
Yes	NO	YES	NO	YES	NO
YES	NO	NO	NO	NO	NO
3 Years	3 Years	3 Years	3 Years	3 Years	3 Years
< 140 Watts	< 235 Watts	< 235 Watts	< 230 Watts	< 230 Watts	< 430 Watts
< 0.75 Watts	< 0.75 Watts	< 0.75 Watts	< 0.75 Watts	< 0.75 Watts	< 1 Watt
60,000 Hours	30,000 Hours	30,000 Hours	60,000 Hours	60,000 Hours	50,000 Hours
1246 x 238 x 948	1550 x 926.5 x 110.5	1550 x 926.5 x 110.5	1621 x 968.5 x 111	1621 x 968.5 x 111	1864 x 1125 x 120.2
49.06" x 9.37" x 37.32"	61.02" x 36.5" x 4.37"	61.02" x 36.5" x 4.37"	63.82" x 38.13" x 4.37"	63.82" x 38.13" x 4.37"	73.39" x 44.29" x 4.73"
46.7kg	70.55kg	74.55kg	74kg	78kg	101kg
102.95 lbs	155.53 lbs	164.55 lbs	163.14 lbs	171.96 lbs	222.66 lbs
440 x 400	440 x 400	440 x 400	440 x 500	440 x 500	600 x 500
Lead Free, RoHS	Lead free, RoHS	Lead free, RoHS	Lead free, RoHS	Lead free, RoHS	Lead free, RoHS
	compliant	compliant	compliant	compliant	compliant
CE, FCC	CE/FCC	CE/FCC	CE/FCC	CE/FCC	CE/FCC
4mm	5mm	5mm	5mm	5mm	5mm Anti Glare
1300 x 772 x 106.5	1735 x 238 x 1130	1735 x 238 x 1130	1745 x 238 x 1120	1745 x 238 x 1120	2120 x 310 x 1425
51.18" x 30.39" x 4.21"	68.31" x 9.37" x 44.49"	68.31" x 9.37" x 44.49"	68.70" x 9.37" x 44.09"	68.70" x 9.37" x 44.09"	83.47" x 12.21" x 56.10"
54.15kg	92.05kg	96.05kg	92kg	96kg	116.kg
119.39 lbs	202.93 lbs	211.75 lbs	202.82 lbs	211.64 lbs	255.73 lbs

All LED products include; Single user license of Wizteach, Power Cable, VGA Cable, HDMI Cable, Audio Cable, Remote Control + Batteries, Stylus Pen (x2), User Manual

SPECIFICATIONS

INTERACTIVE WHITEBOARDS

	TouchIT Board 78"	TouchIT Board 90"	TouchIT Board Lite	TouchIT EM Board
IWB Size	78"	90"	78" & 87"	78"
Part Number	609465686271	609465686295	0608641029925 0608641029932	0608641029949
Display Aspect Ratio	16:09	16:09	16:10	16:10
Resolution	4096X4096	4096X4096	200 points (lines) per inch	Effective writing resolution ≥13304*9800
Accuracy	Approx. ±1.5mm	Approx. ±1.5mm	Approx. ±1.5mm	<0.05mm
Enamel Steel Surface	YES	YES	YES	NO - Melamine
Magnetic Surface	YES	YES	YES	No
Hard Surface	YES	YES	YES	YES
Easily Damaged Membrane	NO	NO	NO	NO
Dry-Erase Marker Friendly	YES	YES	YES	NO
Aluminum Frame	YES	YES	YES	YES
Digitizing Technology	Infrared	Infrared	CCD	Electromagnetic
Interface	USB	USB	USB	USB
Software	Wizteach OEM	Wizteach OEM	Wizteach OEM	Wizteach OEM
Pen/Finger Touch	Finger/Stylus	Finger/Stylus	Finger/Stylus	Stylus
Responding Speed	First point 25ms consecutive points 8ms	First point 25ms consecutive points 8ms	10 m/s	Signal tracking speed: 5m/s, processing speed: ≥500dot/s, transmission speed: 57600bps
Function Buttons	n/a	n/a	n/a	YES
Power Supply Required	NO	NO	NO	NO
Power Consumption	<90mA	<90mA	<90mA	90mA
Operating Systems	Windows 2000/XP/Vista/7 MAC & Linux	Windows 2000/XP/Vista/7 MAC & Linux	Windows 2000/XP/Vista/7 MAC & Linux	Windows 2000/XP/Vista/7
Operation Voltage	3.7V (Supplied over USB)	3.7V (Supplied over USB)	3.7V (Supplied over USB)	3.7V (Supplied over USB)
Operation Temperature	-30 - 80 °C (temp slope less than 25C/hr)	-30 - 80 °C (temp slope less than 25C/hr)	-20 to 60 °C	-20 to 60 °C
Operation Humidity	0-85% Operating non condensing	0-85% Operating non condensing	10-90% Operating - Non Condensing	10-90% Operating - Non Condensing
Storage Temperature/ Humidity	0-95% storage non condensing	0-95% storage non condensing	10-90% Operating - Non Condensing	10-90% Operating - Non Condensing
Supplied Accessories	Stylus, Wall Mounts, Guarantee Card	Stylus, Wall Mounts, Guarantee Card	Stylus, Wall Mounts, Guarantee Card	Stylus, Wall Mounts, Guarantee Card
Warranty	Three year (IR Technology), 30 years (surface)	Three year (IR Technology), 30 years (surface)	Three year (IR Technology), 30 years (surface)	1 Year
Scan Period	45-70 Hz	45-70 Hz	N/A	N/A
ESD Capacity	contact = 4KV, air = 8 KV	contact = 4KV, air = 8 KV	N/A	N/A
Certificates	FCC, CE, ROHS	FCC, CE, ROHS	FCC, CE, ROHS	FCC, CE, ROHS
Cable Length	4500 mm	4500 mm	4500 mm	4500 mm
Screen Surface	Very Durable Porcelain enamel steel with a lifetime warranty	Very Durable Porcelain enamel steel with a lifetime warranty	Very Durable Porcelain enamel steel with a lifetime warranty	Melamine
Power Supply	USB	USB	USB	USB
Pen Function	No need for special pens, CAN stimulate right click, supplied with stylus for writing	No need for special pens, CAN stimulate right click, supplied with stylus for writing	No need for special pens, CAN stimulate right click, supplied with stylus for writing	Left and Right Click
Dry Erase Marker Friendly Surface	YES	YES	YES	NO
Surface Resistant to punctures	YES	YES	YES	YES
Frame	Aluminum	Aluminum	Aluminum	Aluminum
Mounting Methods	Corner Mount and separate brackets designed especially for Stud Walls	Corner Mount and separate brackets designed especially for Stud Walls	Bracket Mount	Bracket Mount
Product Dimensions (mm)	1924 x 1185	2170 x 1350	78" - 1750 x 1145 87" - 1944 x 1266	1874 x 1144
Product Dimensions (inches)	6' 3" 3/4 x 3' 10" 3/4	7' 1" 1/2 x 4' 5" 1/4	78" - 76.5" x 49.8" 87" - 68.9" x 45.1"	73.78" x 45.04"
Product Weight (kg)	25.7	34	78" - 25 KG 87" 30KG	18
Product Weight (lbs)	56.66	74.96	78" - 55.11lbs 87" - 66.14lbs	39.68
Package Dimensions (mm)	2030 x 1330 x 110	2250 x 1430 x 110	78" - 1970 x 1260 x 70 87" - 2100 x 1450 x 90	1974*1254*40
Package Dimensions (inches)	6' 8" 1/4 x 4' 4" 3/8 x 3' 3" 3/4	7' 4" 1/2 x 4' 8" 1/4 x 3' 3" 3/4	78" - 77.56" x 49.61" x 2.76" 87" - 82.68" x 57.09" x 3.54"	77.72" x 49.37" x 1.57"
Package Weight (kg)	35.7	45.3	78" - 30 KG 87" 35KG	29
Package Weight (lbs)	78.70	99.87	78" - 66.14lbs 87" - 77.16lbs	63.93

SPECIFICATIONS

STANDS & MOUNTS - LED

Part Code	UPC Part Code	Product Type	Description	Packaged Dimensions mm (inches)	Packaged Weight kg (lbs)
WMK-42-46-55	0608641029147	Wall Mount for 42" / 46" / 55"	Wall Mount Bracket	510mm x 160mm x 80mm (20" x 16.3" x 3.1")	3.3kg (7.3lbs)
WMK-65-70	0608641029154	Wall Mount for 65" / 70"	Wall Mount Bracket	810mm x 160mm x 80mm (31.9" x 16.3" x 3.1")	4.7kgs (10.4lbs)
WMK-84	0608641029161	Wall Mount for 84"	Wall Mount Bracket	810mm x 160mm x 80mm (31.9" x 16.3" x 3.1")	4.7kgs (10.4lbs)
WMK-32	0608641029178	Wall Mount for 32"	Wall Mount Bracket	510mm x 160mm x 80mm (20" x 16.3" x 3.1")	3.3kgs (7.3lbs)
DTS-42-46-55	0608641029185	Desk Top Stand 42" / 46" / 55"	Desk Top Stand	734mm x 374mm x 80mm (28.9" x 14.72" x 3.1")	14.03kgs (30.9lbs)
DTS-65-70	0608641029192	Desk Top Stand 65" / 70"	Desk Top Stand	979mm x 384mm x 323mm (38.5" x 15.1" x 12.7")	18.6kgs (41lbs)
DTS-84	0608641029208	Desk Top Stand 84"	Desk Top Stand	TBA	TBA
MOTOWMK	0608641029215	Height Adjustable Wall Mount / Trolley for LED/LCD	Can lift upto 150KGS	1620mm x 960mm x 2220mm (63.7" x 37.8" x 87.4")	TBA
1542301	0608641029079	TouchIT LCD/LED Duo Trolley Lift	Suitable for 46" to 70" - 500mm Electric Height Adjustment	1300mm x 930mm x 1200mm Pallet (51.2" x 36.6" x 47.2")	80kgs (176.4lbs)
MOBWMK	0608641029376	TouchIT LCD/LED Mobile Stand (MOBWMK)	Suitable for 32" to 82" (LCD & LED) 5 Fixed Height Positions	1880mm x 910mm x 535mm (74" x 35.8mm x 21")	65kg (143lbs)

STANDS & MOUNTS - IWB

Part Code	UPC Part Code	Product Type	Description	Packaged Dimensions mm (inches)	Packaged Weight kg (lbs)
STANDMAN	609456503280	TouchIT IWB Stand (Manual)	Mobile Stand - TouchIT Board (Manual Height Adjust)	1310mm x 255mm x 775mm (51" 1/8 x 10" 1/8 x 30" 1/2)	50kgs (110lbs)
STANDELEC	609456503297	TouchIT IWB Stand (Electric)	Mobile Stand - TouchIT Board (Elec- tric Height Adjust)	1060mm x 800mm x 445mm (41" 6/8 x 31" 1/2 x 17" 1/2)	65kgs (143lbs)



SPECIFICATIONS

TOUCHIT WIS

Hardware	
WLAN	802.11 b/g/n Ralink 3572
Antenna	Dipole 2dBi x2
External Power Adapter	5V DC 2.5A
Wireless Range	300 feet / 90m
Supported Output Resolution	1280 x 720 Pixels
Inputs & Outputs	
10/100 LAN Port	Yes
Audio port	Yes
USB Host Port	Yes (x2)
HDMI	Yes
LED	Yes
DC Jack	Yes
Supported Windows OS	XP/Vista/7/7
Supported Mac OS	10.5 and above
Software Features	
Plug&Show (Windows)	Yes
4-to-1 split screen	Yes
Audio Projection	Yes
Remote Desktop Control	Yes
PtG (PC-less presentation)	Yes
Virtual Extended Desktop (VDD driver for Windows)	Yes (XP, Vista, 7, 8)
Auto Latency Control	Yes
Magnifier under 4-to-1 split screen	Yes
DirectX (CAD, Game, Media Center)	Yes
Screen Capture (Windows)	Yes
Conference Control	Yes
DHCP support	Yes
GateKeeper	Yes
SNMP Management	Yes
Changeable Standby Screen	Yes
Wireless Mode	AP, Infrastructure, AP-Client Mode
Wireless Security	WEP/WPA/WPA2
MobiShow application	iOS 3.2 above, Android 2.2 above, Blackberry 5.0 above. Win CE / Windows Mobile 5/6
Blackberry 5.0 above.	Yes
Win CE / Windows Mobile 5/6"	Yes
WiFi-Doc (iOS/Android)	Yes
BrowserSlides	Yes
SidePad	Yes
(Sender: Windows/Mac)	Yes
(Receiver: iOS/Android)	Yes
Shoot & Show	Yes
On Screen PC-List	Yes
UoIP (USB over IP) for Touch Panel/IWB	Yes
Advanced Screen Capture (Windows)	Yes
Two-way Wireless Projection Control (OSD & Web management page)	Yes
Language support	Eng/Ch-T/CH-S/Jap/Kor

Size	4 Point Touch	
46"	WIS4P46	0608641029826
55"	WIS4P55	0608641029833
65"	WIS4P65	0608641029857
70"	WIS4P70	0608641029864
84"	TOUCHIT84	0608641030006

SPECIFICATIONS

DIGITAL SIGNAGE

Features:

Dimensions: 116.6mm x 112.0mm x 39.0mm (4.59" x 4.41" x 1.55")

Cooling: Active | Drive: mSATA | Color options: Black only | Chassis design: Aluminum and Plastic

Power Supply: 19V, 65W DC-DC power adapter included

Additional Features:

Antenna for WIFI | Front Panel USB 2.0 | VESA mounting bracket included

Technical Specification:

Processor support - Intel® Core™ i3 3217U Processor (1.8 GHz, Dual Core processor with 3 MB smart cache)

Supports Intel® 64 architecture 3 | Chipset - Intel® Q577 Express Chipset

Graphics - Intel® HD Graphics 4000 - Dual HDMI Ports supporting dual independent display capability

Peripheral Connectivity - Integrated Intel 10/100/1000 Network Connection - Three Hi-Speed USB 2.0 ports (two back panel ports and one front panel port)

Expansion Capabilities - One full length mini-PCIe slot supporting mSATA capability - One half length mini-PCIe slot with dual USB 2.0 ports routed

System BIOS - Intel® Visual Bios - 64 Mb Flash EEPROM with Intel® Platform Innovation Framework for EFI Plug and Play - Advanced configuration and power interface V3.0b, SMBIOS2.5 - Intel® Express BIOS update support fast boot bios optimized post for almost instant-on access to pc from power on

System Memory - 8GB memory

Voltage - 1.5V and 1.35V

Hardware Management Features - Processor fan speed control - Voltage and temperature sensing - Fan sensor inputs used to monitor fan activity - ACPI-compliant power management control intel® pro 10/100/1000 network connection - Low-power design

Audio - Intel® High Definition Audio (Intel HD Audio) via two HDMI 1.4a outputs supporting 8 channel (7.1) digital audio

Indicators and Controls - HDD LED, Power LED - Power on/off

Mechanical - Chassis size: 4.59" x 4.41" x 1.55" (116.6mm x 112.0mm x 39.0mm) - Board size: 4" x 4" (101.6mm x 101.6mm) 530g or 1.17lbs





TouchIT Technologies, Inc

101 West Big Beaver Road

Suite 1400

Troy, MI 48084

USA

sales@touchittechnologies.com

USA - 248 764 1084

UK - 0208 819 9641

AUSTRALIA - 0290 370 130

ASIA PAC Sales +886 955 771 765

HONG KONG Sales +85 258 083 087

The logo for Touchboards features the word "Touchboards" in a bold, black, sans-serif font. The letters "T", "O", and "B" are each enclosed in a colored square: "T" in yellow, "O" in blue, and "B" in orange. The remaining letters "U", "C", "H", "B", "O", "A", "R", "D", "S" are in black and follow the colored letters.

Touchboards

205 Westwood Ave, Long Branch, NJ 07740

Phone: 866-94 BOARDS (26273) / (732)-222-1511

Fax: (732)-222-7088 | E-mail: sales@touchboards.com