



INTERACTIVE LED | DIGITAL SIGNAGE | TABLET COLLABORATION

**Touchboards**  
205 Westwood Ave, Long Branch, NJ 07740  
Phone: 866-94 BOARDS (26273) / (732)-222-1511  
Fax: (732)-222-7088 | E-mail: sales@touchboards.com



# TOUCHIT LED DUO™

## The Future of large-format interactive touch displays

Utilizing the latest in display technology, the TouchIT LED Duo is a range of six input multi-gesture interactive displays. Connect your computer and with no drivers or calibration required, you have full mouse control of your computer at your fingertips from the LED. Control, annotate or surf the web, all are possible via the TouchIT LED Duo.

32" 42" 46" 55" 65" 70" 84"

## WHY CHOOSE AN INTERACTIVE LED?

- No Shadow
- Brighter & Clearer Image
- Easier to Install
- High Definition (HD)
- Low Maintenance
- Long lifespan for an LED
- Truly plug and play



## WHY CHOOSE THE TOUCHIT LED DUO?

- 32" to 84"
- No Calibration & No Driver
- Multi Touch - 6 Point
- Perfect for gestures in both MAC & Windows
- Slim Profile
- 4mm & 5mm Tempered Glass
- Easy to clean & Durable
- 3 Year Warranty (On-Site for Continental USA & Canada)

## HIGH DEFINITION

Our range of LED Displays are all High Definition displays.

- 1920 x 1080
- Full HD





# TOUCHIT LED DUO PRO™

Full HD, touch-sensitive, 6 point touch, interactive LED with integrated PC.

The TouchIT LED Duo Pro combines a Full HD touch-sensitive display with a server grade integrated PC to create the ultimate interactive product.

Operational straight out of the box, simply connect the unit to a power outlet (socket) and you are ready to go. There is nothing to install or calibrate - it just works! With a server grade PC and a commercial grade panel, the TouchIT LED Duo Pro is designed for 24/7 use - ideal for all your presentation requirements.

- Commercial Grade Panel and Server Grade Integrated PC
- Ideal for Education
- Perfect for the Board Room
- 42" to 84" Models Available
- Includes Wizteach Software



# TOUCHIT 19"



## Single Touch IR Table Top Touch Monitor

The TouchIT 19" Table Top Monitor is an industrial grade touch LCD screen with a durable metal housing - ideal for education.

Unlike other desk top touch screens, the 19" TouchIT LCD has a 3mm tempered glass finish which means it is extremely durable and hard to damage - ideal for the toughest of environments - even the classroom!

### CONNECTIVITY

Connect to the 19" LCD Screen with either a 15 Pin D-Sub (VGA) or DVI connection.

Native Resolution 1440 x 900  
 Max. Display Mode 1440 x 900/60Hz  
 Brightness 400 nits  
 Contrast 500:1  
 View Angle 160° / 160°  
 Table Stand Included  
 (keyboard not included)





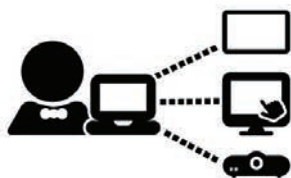
## SHARE CONTENT WIRELESSLY WITH MULTIPLE PARTICIPANTS ACROSS MULTIPLE DEVICES

- Present Wirelessly With A Tablet Device Or Smartphone
- Share Your LED Screen With 40+ Students or Meeting Participants
- Work with Windows, MAC, IOS and Android devices
- In-app Presentation Capture and Note-Taking
- Remote participation over the Internet on your device





## HOW IT WORKS...



Start a session on your host device  
(which is connected to your TouchIT LED Duo)



Ask a participant to join your session using the  
DisplayNote app on their device, locally or via the  
cloud (if a cloud license is purchased)  
(iPad, tablet, phone, laptop)



Start sharing ANY content with all connected  
devices over the same wireless network locally,  
or the internet if using the cloud.



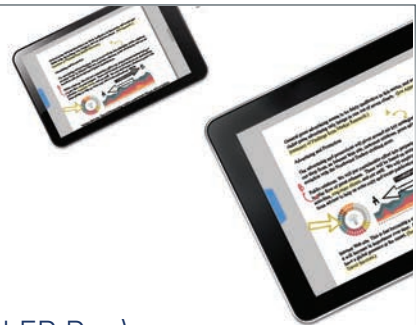
Users can capture your content, annotate and  
add their own notes...



...and work together in real-time collaboration



When the session is over users can save, store  
and export everything for future review





**CONNECT FROM ANYWHERE  
OVER THE INTERNET**

TouchIT Notes has been designed to allow you to share your PC or Mac screen with 40+ iPads, Android tablets, phones or computers, locally or over the internet\*.

Launch TouchIT Notes and ask participants to join via the DisplayNote app. Once connected, everything you do on screen is shown on the participants' screens, wirelessly.

\*Additional charges for cloud subscriptions may apply

**UTILIZE THE CLOUD**

**AUDIO (VOICE) AND  
DATA STREAMING  
TO YOUR DEVICE**



**REMOTE PRESENTATIONS  
MADE EASY**



Have you ever wished your class or audience could see your presentation on their device from any location over the internet?

PART CODE	UPC CODE	DESCRIPTION	PART CODE	UPC CODE	DESCRIPTION
NOTES10	0608641030020	1 Presenter & 10 participants	CLOUD10	0608641030082	1 Presenter & 10 cloud users
NOTES20	0608641030037	1 Presenter & 20 participants	CLOUD20	0608641030099	1 Presenter & 20 cloud users
NOTES40	0608641030044	1 Presenter & 40 participants	CLOUD40	0608641030105	1 Presenter & 40 cloud users
NOTES40+	0608641030051	1 Presenter & 40+ participants	CLOUD100	0608641030112	1 Presenter & 100 cloud users

\*Please note that the Cloud Products are annual purchases.

# TOUCHIT FUSION™

## THE 3-IN-1 PRODUCT

Incorporating an integrated PC, 6 point or 32 point touch LED and an electric mobile stand, the TouchIT Fusion is three products in one. An Interactive Easel, an Interactive Table and an Interactive LED.

Transforming the TouchIT Fusion from one mode to another could not be any easier - everything is controlled at the touch of a button. The TouchIT Fusion is the ideal product for group collaboration or cluster group learning.

The TouchIT Fusion comes in two size options, 42" or 55". Choose between either the ground breaking 32 point or 6 point touch models.



42" 55"

6 Point Touch

32 Point Touch

### Collaboration

Supplied with the Snowflake multi-touch suite of interactive software, the TouchIT Fusion is the ideal collaboration product

- 42" & 55" LED Models
- 6 Point & 32 Point Models
- Integrated PC (See page 3)
- Electric Height Adjustable Stand
- Electric Tilting Stand
- Ideal for group work
- Anti-glare tempered glass finish

PART CODE

UPC CODE

DESCRIPTION

FUSION42LED 0608641029901 42", 6 Input, integrated PC

FUSION55LED 0608641029895 55", 6 Input, integrated PC

32FUSION42LED 0608641029918 42", 32 Input, integrated PC

32FUSION55LED 0608641028454 55", 32 Input, integrated PC

## MANUAL HEIGHT ADJUSTABLE STAND

Our Mobile Stand is specifically designed for the LED Duo range of interactive displays and provides a mobile mounting option. The stand is manually height adjustable with five fixed positions.



Suitable for use with:



**Part Code:**  
MOBWMK



## ELECTRIC HEIGHT ADJUSTABLE STAND

The MotoWMKII is able to raise up to 150kgs (330lbs) 700mm (27.5") at the touch of a button and is suitable for use with the entire range of LED - 32" to 84".

Suitable for use with:



**Part Code:**  
MOTOWMK



**Part Code:**  
WMK-32      WMK-65-84  
WMK-42-46-55

## WALL MOUNTS

Our wall mounts are specifically designed to attach the LED Duo, and Duo Pro range to a wall. They are designed to cope with both the weight of the units and the fact that the screens will be touched causing potential movement. Our wall mounts hold the units firmly in place. (Please be aware that other mounts may not be rated for the weight or specific use with our products.)



## TABLE TOP STANDS

Our table top stands are specifically designed for the LED Duo and Duo Pro range so they can be used on a table or desk. The TouchIT Table Top Stand is ideal for displaying the TouchIT LED Duo or Duo Pro on top of a cabinet or indeed a table or shelf where wall mounting is not an option.



(Wall Mounts & Table Top Stands available for all sizes)

**Part Code:**  
DTS-42-46-55      DTS-84  
DTS-65-70



# LED APPLICATIONS

## WHERE CAN YOU USE THE LED?



### EDUCATION

Any teacher, professor or educator can easily during the class take the USB and HDMI cables from the Interactive LED, connect those two cables to their laptop or PC, open the software, and have a high quality, high definition teaching tool to convey their lesson plan or brain storming session to the class or work group. By simply using your finger or any stylus to touch the Interactive LED, you instantly have a mouse at your "fingertips" to communicate your ideas. Perfect for Mac, Linux or Windows-based computers.

### CORPORATE

No matter what business you have, we all want to collaborate effectively, present, communicate, take notes, save those notes and then distribute them via email. The TouchIT LED Duo is perfect for any boardroom or meeting room and the possibilities for what you can achieve with the unit are are endless.



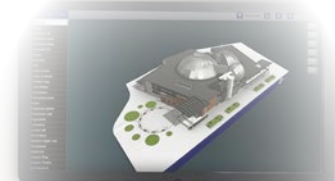
### MEDICAL

The TouchIT LED Duo is the ideal tool for health care professionals to use in the medical environment. Not only is it ideal for patient diagnosis and explanation, but it is the perfect tool for exploring and annotating xrays as well being useful as an input device for your patient management system.



### DIGITAL SIGNAGE

The TouchIT LED Duo is ideal for touch-based digital signage. You can engage and communicate to your customers with the utmost flexibility and convenience. Whether you want to run the screen in portrait, landscape or even horizontally in a table wayfinding application, the TouchIT LED Duo is the ideal hardware for your touch-based digital signage needs.



# DIGITAL SIGNAGE SOFTWARE



Turn any screen into eye-catching digital signage with just a few clicks of your mouse!

## Touchboards

205 Westwood Ave, Long Branch, NJ 07740  
Phone: 866-94 BOARDS (26273) / (732)-222-1511  
Fax: (732)-222-7088 | E-mail: sales@touchboards.com



- Drag and drop creation
- Unlimited content zones
- Use almost any file formats
- Quick and easy updates
- Live content updates
- Remote management & updates
- **Touchscreen compatible**
- Use your own PC
- Standalone player available



## Digital Signage Made Easy!

Creating digital signage content can be time consuming, difficult to integrate and only for the most technical amongst us. With the TouchIT Digital Signage Software, we believe we have one of the world's easiest to use software that in minutes, signage can be created to visually convey your message.

Supporting multiple movie formats, animated images, web pages, PowerPoint®, news feeds and much more simultaneously, our software is the ultimate digital signage tool.

As well as being one of the most fully featured digital signage products in the world, our software is also the simplest. You simply choose the media type you want and 'add a zone' of it on to your Windows® desktop. Move it with your left mouse, resize it with your right mouse, then 'add another zone'. Keep going until you have your screen layout. It couldn't be easier. Each zone 'plays live' as you add it, so you can instantly see how your design looks.

It's ease of use makes it ideal for those just getting started with digital signage. Creation of layouts is quick and simple with just a few clicks of your mouse.

Our software is 'resolution independent' and scales screen layouts automatically to the resolution you set on your player PC. Create and play your screens at HD resolution (1920 x 1080) if you like, but why stop there? Our players can operate at even higher resolutions and even operate in 'extended desktop' letting you create presentations at 3840 x 1080 or higher. Landscape or portrait, HD or HD+ and beyond, it's your choice.

### What do I get with the software?

- A player and editor in one
- Unlimited content zones
- Sample Content
- Pre-prepared templates to customize
- Web updating functionality
- Built in web-server

### 3 Step Creation for your Digital Signage....

Step 1 Open the software.

Step 2 Drag and drop in your content and use your mouse to resize and position in place.

Step 3 Add a background image and you are ready to go!



## INCORPORATE ALMOST ANY FILE FORMAT!

- Unlimited Multi-Zone media play-out
- Live drag and drop screen layout creation
- Photos / Images / Entire folders
- Live 'Web page windows'
- Flash® Animations
- RSS News
- RSS and Picture RSS
- Streaming video
- Movies AND Live TV
- Microsoft® PowerPoint Presentations
- Kiosk - Touch screen support as standard
- Play different layouts @ different times of day
- Multi-head graphics capable
- Audio files and volume controls
- Resolution independent

# APPLICATIONS FOR DIGITAL SIGNAGE



## RETAIL, HOSPITALITY & LEISURE

No longer do you need to create and distribute notices and signs around your premises. With TouchIT Digital Signage in place, your customers and guests can be provided with up-to-the-minute information whenever and wherever they need it. Show today's restaurant menu, remind members about forthcoming events, or simply promote further services. The system is as flexible and as versatile as you need it to be.

## EDUCATION

For schools, colleges and universities, the TouchIT Digital Signage provides a flexible means of engaging and communicating with pupils and staff, but can help you make the most cost-effective use of valuable resources. With one or more large format screens, signage players and our software at your disposal, you can communicate vital messages quickly and easily throughout your school or college.

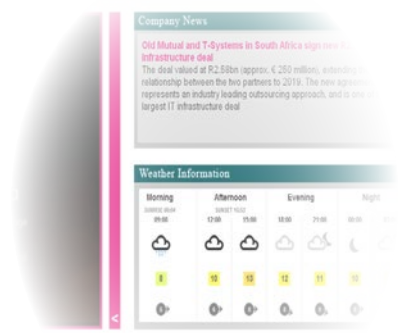


## HEALTHCARE

Use the TouchIT Digital Signage as an on-screen patient messaging system, designed especially for Primary Care Providers and General Practice. It provides a highly flexible and versatile way of keeping patients and other service users fully informed and updated while waiting to be seen by your practice staff.

## CORPORATE

Your business needs to project the right image to its clients and visitors. Just as importantly, vital marketing messages need to be shared with anyone who comes into your offices and other business sites. Use the TouchIT Digital Signage system as a reception-TV information system for corporate offices that puts you in control of how your business is perceived by visitors.



Welcome to T System  
The report to recent

# TOUCHIT PLAYER™

## DIGITAL SIGNAGE

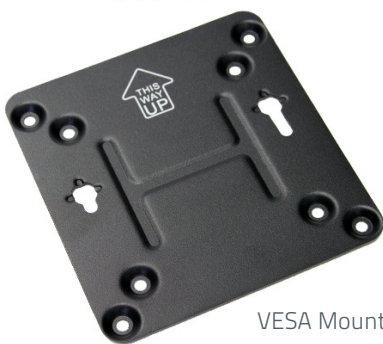
Built on Intel NUC Technology with an Intel processor, the Digital Signage Player from TouchIT Technologies despite only being 11cm x 11cm (4" by 4") certainly packs a punch and is the ultimate out-of-the-box signage solution !

With a 1.8ghz Intel processor with integrated high performance HD 4000 graphics, the TouchIT Digital Signage Player supports DUAL screen Full HD (1920 by 1080) signage as standard, simultaneously using both the HDMI outputs.

Fitted with the Windows® operating system and built in Wifi, the TouchIT Digital Signage Software, the player is easy to add to any network and directly to a network domain. It also comes with its own mounting bracket to allow easy fixing to walls and the rear of signage screens.

The Digital Signage Player from TouchIT Technologies is a complete out-of-the box signage solution. The same player can support a single screen installation as well as being a remotely controlled, centrally managed full digital signage roll-out across a large organization and multiple sites.

Small, powerful, cost effective and scalable, this is an ideal player for multi-zoned digital signage where space and budget are limited. The TouchIT Player comes pre-installed with the TouchIT Digital Signage Software.



VESA Mount  
included



PART CODE	UPC CODE	DESCRIPTION
DSPLAYER	0608641029987	Digital Signage Player

# OUTDOOR IP-RATED PRODUCTS

## Products for any weather!

Looking to use an LED for outdoor signage or for an outdoor touch applicaton? No problem. Would you like to use digital signage in harsh environments such as at the beach where there are high salt levels or in open exposed areas with bright sunlight? No problem. The TouchIT range of outdoor products will suit your needs.

Our niche is being able to custom build to your design requirements and application. Whether this be small production runs or large scale roll outs, talk to us and we can help design your outdoor product. We also offer a standard range of IP65 panels for outdoor applications available with or without touch functionality.



## Custom Design & Build Process

Utilizing a design-build process, we work with you to design, develop and build a product specific to your requirements, environmental conditions and budget.

Whether you need a touch enabled product or not, we have a vast amount of experience with LED-based technology for both indoor and outdoor use across a broad range of environmental conditions.



# IP-RATED PRODUCTS

## Large format displays with and without touch functionality

This IP65 rated series of monitor is built to operate in harsh and hostile environments and survive the elements. The front of the panel is IP65 rated to combat water, humidity and dust whilst the casing is built to protect the unit from the elements. Internal fans can be activated automatically to drive heat out to keep the unit at a suitable working temperature. The unit also benefits from a strong, rigid structure and specially treated glass to protect the panel from sunlight.

The unit has an auto power on by signal feature and can be controlled by RS485, or by the remote handset.

42" 55"

### SPECIFICATIONS

- Panel Size (Diag.) 42 & 55 inch
- Native Resolution 1920 x 1080
- Brightness 700-1000 nits
- Contrast 6000:1
- Viewing Angle 178° / 178°
- Response Time 6.5ms
- Backlight Unit LED
- Backlight Life 50,000 Hours
- Operating Temp. 0-50
- Operating Humid. 10-90% RH
- Input Voltage AC100~240V 50/60Hz
- Power Consump. < 150 Watts
- Standby Power < 2 Watts
- Input Connector VGA x1 DVIx1 HDMI x 2 YPbPr x 1 audio in
- Output Connector VGAX1 YPbPr x 1 audio out
- Screen Control RS-485 & Remote Handset
- Ambient Detection Auto Ambient Light Detection
- Net Weight > 50 kgs (110lbs)
- Dimension (WxHxD) (42") 1157 x 751 x 223 mm  
45.55" x 29.57" x 8.78"
- Sun readable Yes
- Touch Technology
- Infrared single touch (Optional)



### WHY CHOOSE AN INTERACTIVE IP65 UNIT?

- Outdoor Use
- Wet Conditions
- With or without touch functionality
- High Brightness
- Sunlight readable
- 42" & 55" Available

.....

### IP RATINGS EXPLAINED

The IP Code (Ingress Protection Rating sometimes also interpreted as International Protection Rating) classifies and rates the degree of protection provided against both objects and water entering a unit. For example, body parts like hands and fingers, dust, and in the case of mechanical casings, this includes accidental contact with water.

The standard aims to provide users more detailed information than vague marketing terms such as waterproof. The digits (characteristic numerals) indicate conformity with the certain conditions. Where there is no protection rating with regard to one of the criteria, the digit is replaced with the letter X.

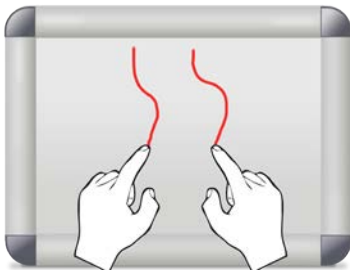
IP65 refers to the LED being Dust Tight, no ingress of dust should occur and it should have complete protection against contact. Furthermore, the LED offers protection against Water jets - Water projected by a nozzle (6.3 mm) against the enclosure from any direction shall have no harmful effects.



# TOUCHIT BOARD™

The ultimate dual-purpose interactive whiteboard

TouchIT Board™ works in conjunction with your data projector and your computer to create a touch-based interactive whiteboard where you have full control of your PC from the Board. The TouchIT Board™ works just like a mouse allowing both left and right click functionality at the board.



- Dual Input Multi-Touch
- Enamel Steel Surface
- Dry Erase Marker Friendly
- No solvent cleaner required
- 30 Year Surface Guarantee
- 3 Year Warranty upon registration

78" 90"



(80" available on special request, minimum order quantities apply)

## ELECTRIC HEIGHT ADJUSTABLE STAND



- Compatible with all TouchIT Interactive Whiteboards
- 700mm Height Adjustment (27.5")
- Wired remote control included
- Suitable for Short Throw & Ultra Short throw projectors with a throw distance of up to 1m (3.28')

**Part Code:**  
STANDELEC (0608641028478)

## MANUAL HEIGHT ADJUSTABLE STAND



- Compatible with all TouchIT Interactive Whiteboards
- 700mm Height Adjustment (27.5")
- Suitable for Short Throw & Ultra Short throw projectors with a throw distance of up to 1m (3.28')

**Part Code:**  
STANDMAN (0608641028461)





# TOUCHIT BOARD LITE™

## LOW COST INFRA-RED MULTI-TOUCH INTERACTIVE WHITEBOARD

The TouchIT Board Lite is an entry level touch-based interactive whiteboard with multi-touch functionality and an enamel steel surface. Utilizing the latest in camera-based touch technology, the TouchIT Board Lite enables full control of your computer at the board. Touch for left click, touch and hold for right click, full mouse functionality at the touch of a finger.

- 78" & 87"
- Dry Erase Marker Friendly
- Low Cost, entry level IWB
- 1 Year Warranty

**Part Code:**

TBL78 (0608641029925) | TBL87 (0608641029932)

# TOUCHIT EM BOARD™

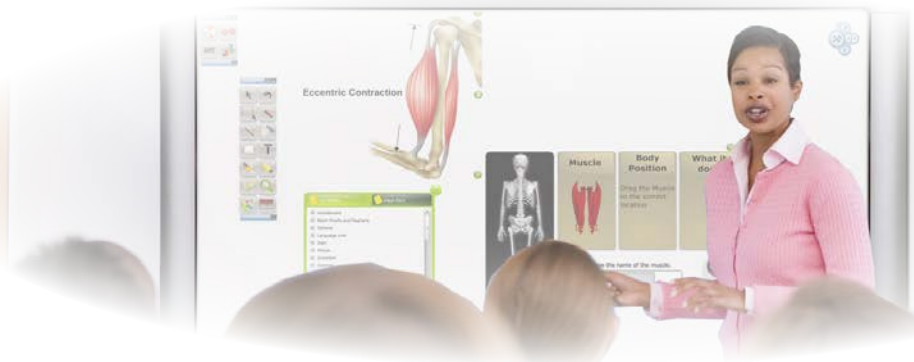
## ELECTROMAGNETIC INTERACTIVE WHITEBOARD

The EM Board from TouchIT Technologies is a low cost, dual pen input, electromagnetic interactive whiteboard. Finished with an aluminum frame and an XPS surface - the EM Board has a high quality finish without the high price tag.

- Windows, MAC & Linux Compatible
- Electromagnetic Interactive Whiteboard
- Dual Pen Input
- 1 Year Warranty

**Part Code:**

TBEM78 (0608641029949)



# SPECIFICATIONS

## LED DUO / LED DUO PRO

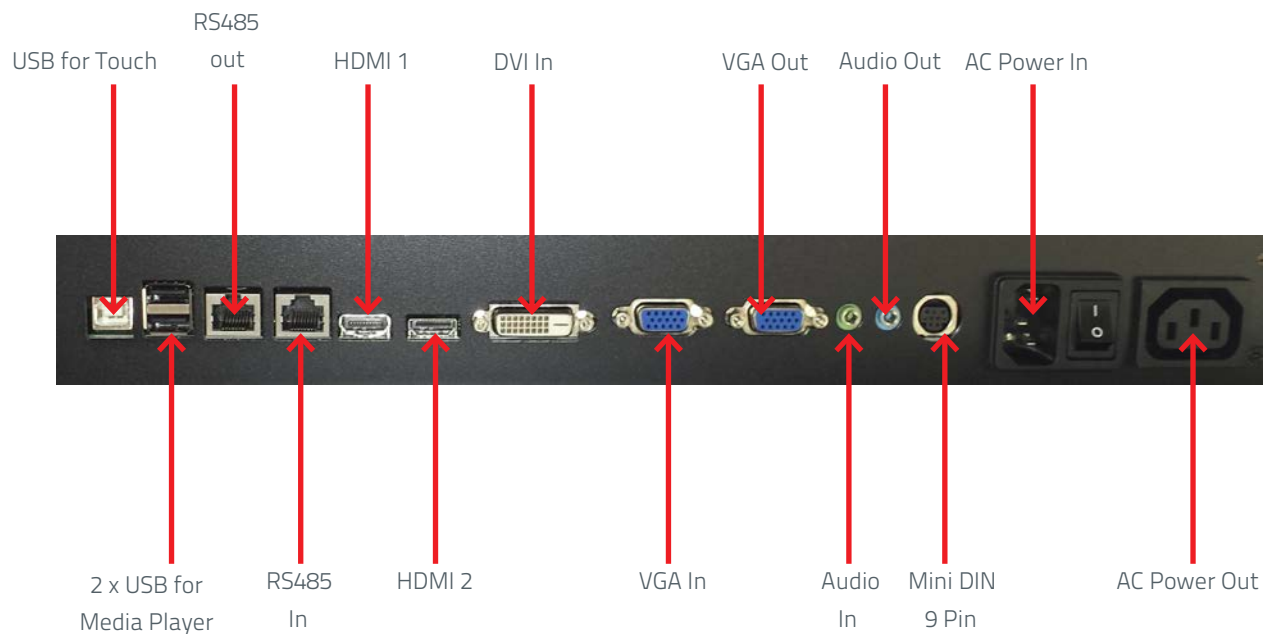
	TouchIT LCD 19"	TouchIT LED Duo 32	TouchIT LED Duo 42	TouchIT LED Duo Pro 42	TouchIT LED Duo 46	TouchIT LED Duo Pro 46
Part Code	0608641029925	0608641029376	0608641029703	0608641029765	0608641029710	0608641029772
Diagonal Size	19inch	32inch	42inch	42inch	46 inch	46 inch
Panel Resolution	1440 x 900	1920 x 1080	1920 x 1080	1920 x 1080	1920 x 1080	1920 x 1080
Native Resolution	1440 x 900/60Hz	1920 x 1080/60Hz	1920 x 1080/60Hz	1920 x 1080/60Hz	1920 x 1080/60Hz	1920 x 1080/60Hz
Brightness (nits)	400	350	400	400	400	400
Contrast Ratio	500:1	3000:1	4000:1	4000:1	4000:1	4000:1
Response Time (G to G)	6ms	6.5ms	6.5ms	6.5ms	6.5 ms	6.5 ms
Aspect Ratio	4:3	0.672916667	0.672916667	0.672916667	0.672916667	0.672916667
Display Colors	16.7M	16.7M	16.7M	16.7M	16.7M	16.7M
Viewing Angle	160°/160°	178°/178°	178°/178°	178°/178°	178°/178°	178°/178°
Pixel Pitch (mm)	N/A	0.51075	0.4845 x 0.4845	0.4845 x 0.4845	0.53025 (H) x 0.53025 (V)	0.53025 (H) x 0.53025 (V)
Multi-Touch Points	1 Point	6 Points	6 Points	6 Points	6 Points	6 Points
Supplier	N/A	AUO	AUO	AUO	AUO	AUO
Video Input (analogue)	VGA	VGA, Component	VGA, Component	VGA, Component	VGA, Component	VGA, Component
Video Input (digital)	DVI-D	HDMI x2, DVI-D	HDMI x2, DVI-D	HDMI x2, DVI-D	HDMI x2, DVI-D	HDMI x2, DVI-D
Video Output (analogue)	N/A	VGA, Component	VGA, Component	VGA, Component	VGA, Component	VGA, Component
Audio Input	N/A	PC/Component	PC/Component	PC/Component	PC/Component	PC/Component
Speaker Output	N/A	6 Ohm	6 Ohm	6 Ohm	6 Ohm	6 Ohm
USB (for touch)	USB	USB	USB	USB	USB	USB
Communication Input Port	N/A	RS485	RS485	RS485	RS485	RS485
Communication Output Port	N/A	RS485	RS485	RS485	RS485	RS485
Color Temp.	N/A	5700(warm), 6500(Warm), 9300(cool), USER	5700(warm), 6500(Warm), 9300(cool), USER	5700(warm), 6500(Warm), 9300(cool), USER	5700(warm), 6500(Warm), 9300(cool), USER	5700(warm), 6500(Warm), 9300(cool), USER
Progressive Scan	Yes	Yes	Yes	Yes	Yes	Yes
Stereo	N/A	Yes	Yes	Yes	Yes	Yes
Output	N/A	10W	10W	10W	10W	10W
Built-in Speakers	N/A	10W x 2	10W x 2	10W x 2	10W x 2	10W x 2
Languages	English	English, Spanish, French, Dutch, Chinese(S), Chinese (T), Japanese.	English, Spanish, French, Dutch, Chinese(S), Chinese (T), Japanese.	English, Spanish, French, Dutch, Chinese(S), Chinese (T), Japanese.	English, Spanish, French, Dutch, Chinese(S), Chinese (T), Japanese.	English, Spanish, French, Dutch, Chinese(S), Chinese (T), Japanese.
Auto Ambience	No	Yes	Yes	Yes	Yes	Yes
Integrated PC	NO	NO	NO	YES	NO	YES
Service and Warranty	3 Years (On-Site for Continental USA & Canada)	3 Years (On-Site for Continental USA & Canada)	3 Years (On-Site for Continental USA & Canada)	3 Years (On-Site for Continental USA & Canada)	3 Years (On-Site for Continental USA & Canada)	3 Years (On-Site for Continental USA & Canada)
Power Consumption	<35W	< 75W	< 70W	< 70W	< 72 Watts	< 72 Watts
Sleep Mode	< 1W	< 0.5W	< 0.75 Watts	< 0.75 Watts	< 0.75 Watts	< 0.75 Watts
MTBF	40,000 Hours	30,000 Hours	30,000 Hours	30,000 Hours	30,000 Hours	30,000 Hours
Packaged Dimensions (mm)		934 x 322 x 710	1152 x 238 x 783	1152 x 238 x 783	1243 x 238 x 841	1243 x 238 x 841
(inches)		36.77" x 12.67" x 27.95"	45.35" x 9.37" x 30.82"	45.35" x 9.37" x 30.82"	48.94" x 9.37" x 33.11"	48.94" x 9.37" x 33.11"
Packaged Weight (KG)		26.2kg	39kg	44.5kg	43.25kg	48.75kg
(lbs)		57.64lbs	85.8lbs	98.10 lbs	95.15 lbs	107.48 lbs
VESA Mount	N/A	200 x 200	440*300mm	440*300mm	400 x 440	400 x 440
Green Approvals	Lead free, RoHS compliant	Lead free, RoHS compliant	Lead free, RoHS compliant	Lead free, RoHS compliant	Lead Free, RoHS	Lead Free, RoHS
Regulatory Approvals	CE /FCC	CE/FCC	CE/FCC	CE/FCC	CE, FCC	CE, FCC
Thickness of Toughened Glass	3mm	4mm	4mm	4mm	4mm	4mm
Unit W x D x H (mm)	471 x 334 x 58	770 x 486 x 103	1012 x 632 x 107	1012 x 632 x 107	1117 x 683 x 100	1114.5 x 675 x 113.6
(inches)		30.31" x 19.13" x 4.05"	39.84" x 24.88" x 4.21"	39.84" x 24.88" x 4.21"	43.97" x 26.88" x 3.93"	43.9" x 26.58" x 4.49"
Product Weight (NET)	6.05kg	22.2kg	32.9kg	37.4kg	34.4kg	38.9kg
(lbs)		48.84lbs	72.38 lbs	82.45 lbs	75.68 lbs	85.76 lbs

TouchIT LED Duo 55	TouchIT LED Duo Pro 55	TouchIT LED Duo 65	TouchIT LED Duo Pro 65	TouchIT LED Duo 70	TouchIT LED Duo Pro 70	TouchIT LED 84 WIS
0608641029727	0608641029789	0608641029734	0608641029796	0608641029741	0608641029802	0608641030006
55 inch	55 inch	65 inch	65 inch	70inch	70inch	84inch
1920 x 1080	1920 x 1080	1920x1080	1920x1080	1920 x 1080	1920 x 1080	3840 x 2160
1920 x 1080/60Hz	1920 x 1080/60Hz	1920x1080 60Hz	1920x1080 60Hz	1920 x 1080/60Hz	1920 x 1080/60Hz	3840 x 2160 / 60Hz
450	450	360 (Typical)	360 (Typical)	350	350	350
4000:1	4000:1	4000:1 (Typical)	4000:1 (Typical)	4000:1	4000:1	1600:1
6.5 ms	6.5 ms	8ms	8ms	6ms	6ms	5ms
0.672916667	0.672916667	0.672916667	0.672916667	0.672916667	0.672916667	0.672916667
16.7M	16.7M	1.07B	1.07B	1.07B	1.07B	1.06B
178° / 178°	178° / 178°	178° / 178°	178° / 178°	176° / 176°	176° / 176°	178° / 178°
0.63(W) x 0.21(H)	0.63(W) x 0.21(H)	0.744	0.744	0.802(H) x 0.802 (V)	0.802(H) x 0.802 (V)	0.9225(H) x 0.9225(V)
6 Points	6 Points	6 Points	6 Points	6 Points	6 Points	6 Points
AUO	AUO	AUO	AUO	Sharp	Sharp	LG
VGA, Component	VGA, Component	D-sub, Component	D-sub, Component	VGA, Component	VGA, Component	VGA, Component
HDMI x2, DVI-D	HDMI x2, DVI-D	HDMI x2, DVI	HDMI x2, DVI	HDMI x2, DVI-D	HDMI x2, DVI-D	HDMI x1, DVI-D
VGA, Component	VGA, Component	D-sub, Component	D-sub, Component	VGA, Component	VGA, Component	VGA, Component
PC/Component	PC/Component	PC/Component	PC/Component	PC/Component	PC/Component	PC/Component
6 Ohm	6 Ohm	6 Ohm	6 Ohm	6 Ohm	6 Ohm	6 Ohm
USB	USB	USB	USB	USB	USB	USB
RS485	RS485	RS485	RS485	RS485	RS485	RS485
RS485	RS485	RS485	RS485	RS485	RS485	RS485
5700(warm), 6500(Warm), 9300(cool), USER	5700(warm), 6500(Warm), 9300(cool), USER	5700(warm), 6500(Warm), 9300(cool), USER	5700(warm), 6500(Warm), 9300(cool), USER	5700(warm), 6500(Warm), 9300(cool), USER	5700(warm), 6500(Warm), 9300(cool), USER	5700(warm), 6500(Warm), 9300(cool), USER
Yes	Yes	Yes	Yes	YES	YES	YES
Yes	Yes	Yes	Yes	YES	YES	YES
10W	10W	10W	10W	10W	10W	10W
10W x 2	10W x 2	10W x 2	10W x 2	10W x 2	10W x 2	10W x 2
English,	English,	English,	English,	English,	English,	English,
Spanish, French,	Spanish, French,	Spanish, French,	Spanish, French,	Spanish, French,	Spanish, French,	Spanish, French,
Dutch, Chinese(S),	Dutch, Chinese(S),	Dutch, Chinese(S),	Dutch, Chinese(S),	Dutch, Chinese(S),	Dutch, Chinese(S),	Dutch, Chinese(S),
Chinese (T),	Chinese (T),	Chinese (T),	Chinese (T),	Chinese (T),	Chinese (T),	Chinese (T),
Japanese.	Japanese.	Japanese.	Japanese.	Japanese.	Japanese.	Japanese.
Yes	Yes	NO	YES	NO	YES	NO
NO	YES	NO	NO	NO	NO	NO
3 Years (On-Site for Continental USA & Canada)	3 Years (On-Site for Continental USA & Canada)	3 Years (On-Site for Continental USA & Canada)	3 Years (On-Site for Continental USA & Canada)	3 Years (On-Site for Continental USA & Canada)	3 Years (On-Site for Continental USA & Canada)	3 Years (On-Site for Continental USA & Canada)
< 140 Watts	< 140 Watts	< 235 Watts	< 235 Watts	< 230 Watts	< 230 Watts	< 430 Watts
< 0.75 Watts	< 0.75 Watts	< 0.75 Watts	< 0.75 Watts	< 0.75 Watts	< 0.75 Watts	< 1 Watt
60,000 Hours	60,000 Hours	30,000 Hours	30,000 Hours	60,000 Hours	60,000 Hours	50,000 Hours
1426 x 238 x 948	1426 x 238 x 948	1629 x 252 x 1036	1629 x 252 x 1036	1745 x 238 x 1120	1745 x 238 x 1120	1864 x 1125 x 120.2
56.14" x 9.37" x 37.32"	56.14" x 9.37" x 37.32"	64.13" x 9.92" x 40.78"	64.13" x 9.92" x 40.78"	68.70" x 9.37" x 44.09"	68.70" x 9.37" x 44.09"	82.99" x 11.69" x 51.18"
50.15kg	55.65 kg	76 kg	81.5 kg	94.6 kg	100.1 kg	116.2 kg
110.33 lbs	122.69 lbs	167.2 lbs	179.68 lbs	208.12 lbs	220.46 lbs	255.64 lbs
440 x 400	440 x 400	440 x 400	440 x 400	440 x 500	440 x 500	600 x 500
Lead Free, RoHS	Lead Free, RoHS	Lead free, RoHS	Lead free, RoHS	Lead free, RoHS	Lead free, RoHS	Lead free, RoHS
CE, FCC	CE, FCC	compliant	compliant	compliant	compliant	compliant
4mm	4mm	CE/FCC	CE/FCC	CE/FCC	CE/FCC	CE/FCC
4mm	4mm	5mm	5mm	5mm	5mm	5mm Anti Glare
1300 x 772 x 104	1300 x 772 x 104	1550 x 927 x 110	1550 x 927 x 110	1621 x 968.5 x 111	1621 x 968.5 x 111	1961 x 1157 x 115
51.18" x 30.39" x 4.09"	51.18" x 30.39" x 4.09"	61.02" x 36.49" x 4.33"	61.02" x 36.49" x 4.33"	63.82" x 38.13" x 4.37"	63.82" x 38.13" x 4.37"	77.20" x 45.55" x 4.52"
42.7kg	48.2kg	66.65kg	72.15kg	76.6kg	82.1kg	101 kg
93.94 lbs	106.26 lbs	146.63 lbs	159.06 lbs	168.52 lbs	181 lbs	222.2 lbs

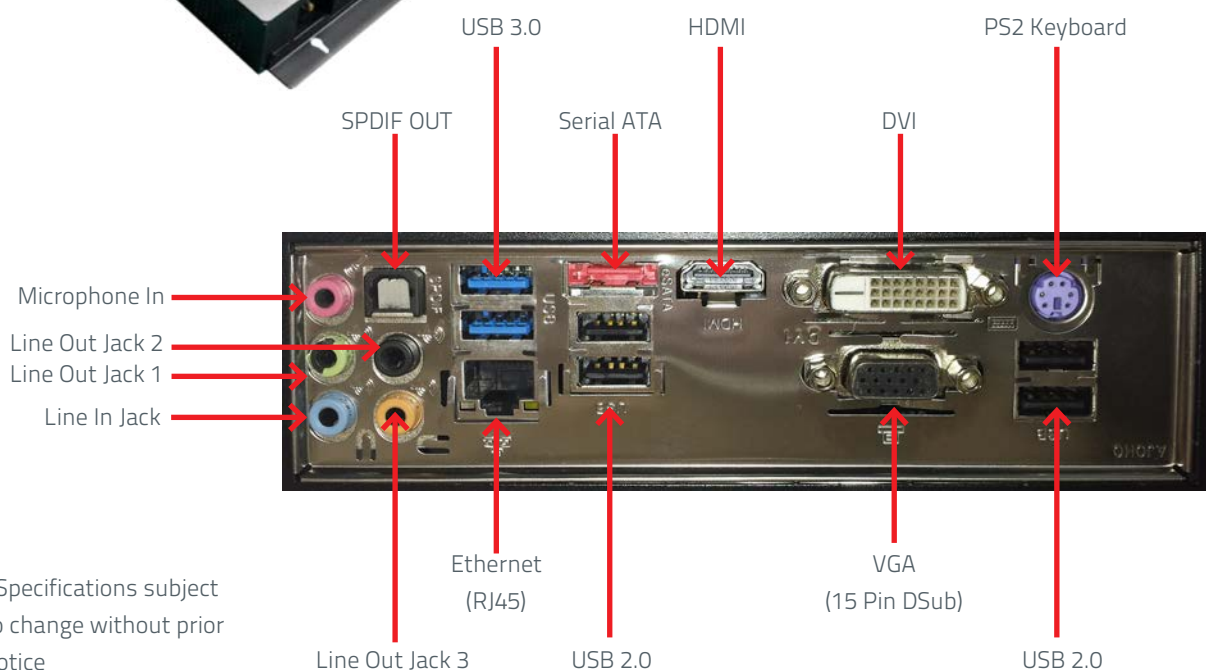
All LED products include; Single user license of Wizteach, TouchIT Notes Presenter, Power Cable, VGA Cable, HDMI Cable, Audio Cable, Remote Control + Batteries, Stylus Pen (x2), User Manual

# CONNECTION GUIDE

## TOUCHIT LEDS



## INTEGRATED PC



\*Specifications subject to change without prior notice

# SPECIFICATIONS

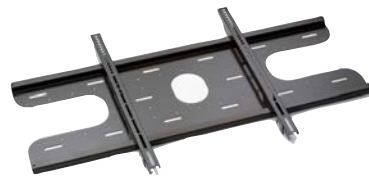
## INTERACTIVE WHITEBOARDS

	TouchIT Board 78"	TouchIT Board 90"	TouchIT Board Lite	TouchIT EM Board
IWB Size	78"	90"	78" & 87"	78"
Part Number	609465686271	609465686295	0608641029925   0608641029932	0608641029949
Display Aspect Ratio	16:09	16:09	16:10	16:10
Resolution	4096X4096	4096X4096	200 points (lines) per inch	Effective writing resolution ≥13304*9800
Accuracy	Approx. ±1.5mm	Approx. ±1.5mm	Approx. ±1.5mm	<0.05mm
Enamel Steel Surface	YES	YES	YES	NO - Melamine
Magnetic Surface	YES	YES	YES	No
Hard Surface	YES	YES	YES	YES
Easily Damaged Membrane	NO	NO	NO	NO
Dry-Erase Marker Friendly	YES	YES	YES	NO
Aluminum Frame	YES	YES	YES	YES
Digitizing Technology	Infrared	Infrared	CCD	Electromagnetic
Interface	USB	USB	USB	USB
Software	Wizteach OEM	Wizteach OEM	Wizteach OEM	Wizteach OEM
Pen/Finger Touch	Finger/Stylus	Finger/Stylus	Finger/Stylus	Stylus
Responding Speed	First point 25ms consecutive points 8ms	First point 25ms consecutive points 8ms	10 m/s	Signal tracking speed: 5m/s, processing speed: ≥500dot/s, transmission speed: 57600bps
Function Buttons	n/a	n/a	n/a	YES
Power Supply Required	NO	NO	NO	NO
Power Consumption	<90mA	<90mA	<90mA	90mA
Operating Systems	Windows 2000/XP/Vista/7 MAC & Linux	Windows 2000/XP/Vista/7 MAC & Linux	Windows 2000/XP/Vista/7 MAC & Linux	Windows 2000/XP/Vista/7
Operation Voltage	3.7V (Supplied over USB)	3.7V (Supplied over USB)	3.7V (Supplied over USB)	3.7V (Supplied over USB)
Operation Temperature	-30 - 80 °C (temp slope less than 25C/hr)	-30 - 80 °C (temp slope less than 25C/hr)	-20 to 60 °C	-20 to 60 °C
Operation Humidity	0-85% Operating non condensing	0-85% Operating non condensing	10-90% Operating - Non Condensing	10-90% Operating - Non Condensing
Storage Temperature/ Humidity	0-95% storage non condensing	0-95% storage non condensing	10-90% Operating - Non Condensing	10-90% Operating - Non Condensing
Supplied Accessories	Stylus, Wall Mounts, Guarantee Card Three year (IR Technology), 30 years (surface)	Stylus, Wall Mounts, Guarantee Card Three year (IR Technology), 30 years (surface)	Stylus, Wall Mounts, Guarantee Card 1 Year	Stylus, Wall Mounts, Guarantee Card 1 Year
Scan Period	45-70 Hz	45-70 Hz	N/A	N/A
ESD Capacity	contact = 4KV, air = 8 KV	contact = 4KV, air = 8 KV	N/A	N/A
Certificates	FCC, CE, ROHS	FCC, CE, ROHS	FCC, CE, ROHS	FCC, CE, ROHS
Cable Length	4500 mm	4500 mm	4500 mm	4500 mm
Screen Surface	Very Durable Porcelain enamel steel with a lifetime warranty	Very Durable Porcelain enamel steel with a lifetime warranty	Very Durable Porcelain enamel steel with a lifetime warranty	Melamine
Power Supply	USB	USB	USB	USB
Pen Function	No need for special pens, CAN stimulate right click, supplied with stylus for writing	No need for special pens, CAN stimulate right click, supplied with stylus for writing	No need for special pens, CAN stimulate right click, supplied with stylus for writing	Left and Right Click
Dry Erase Marker Friendly Surface	YES	YES	YES	NO
Surface Resistant to punctures	YES	YES	YES	YES
Frame	Aluminum	Aluminum	Aluminum	Aluminum
Mounting Methods	Corner Mount and separate brackets designed especially for Stud Walls	Corner Mount and separate brackets designed especially for Stud Walls	Bracket Mount	Bracket Mount
Product Dimensions (mm)	1924 x 1185	2170 x 1350	78" - 1750 x 1145 87" - 1944 x 1266	1874 x 1144
Product Dimensions (inches)	6' 3" 3/4 x 3' 10" 3/4	7' 1" 1/2 x 4' 5" 1/4	78" - 76.5" x 49.8" 87" - 68.9" x 45.1"	73.78" x 45.04"
Product Weight (kg)	25.7	34	78" - 25 KG   87" 30KG	18
Product Weight (lbs)	56.66	74.96	78" - 55.11lbs   87" - 66.14lbs	39.68
Package Dimensions (mm)	2030 x 1330 x 110	2250 x 1430 x 110	78" - 1970 x 1260 x 70 87" - 2100 x 1450 x 90	1974*1254*40
Package Dimensions (inches)	6' 8" 1/4 x 4' 4" 3/8 x 3' 3" 3/4	7' 4" 1/2 x 4' 8" 1/4 x 3' 3" 3/4	78" - 77.56" x 49.61" x 2.76" 87" - 82.68" x 57.09" x 3.54"	77.72" x 49.37" x 1.57"
Package Weight (kg)	35.7	45.3	78" - 30 KG   87" 35KG	29
Package Weight (lbs)	78.70	99.87	78" - 66.14lbs   87" - 77.16lbs	63.93

# SPECIFICATIONS

## STANDS & MOUNTS - LED

Part Code	UPC Part Code	Product Type	Description	Packaged Dimensions mm (inches)	Packaged Weight kg (lbs)
WMK-32	0608641029178	Wall Mount for 32"	Wall Mount Bracket	510mm x 160mm x 80mm (20" x 16.3" x 3.1")	3.3kgs (7.3lbs)
WMK-42-46-55	0608641029147	Wall Mount for 42"/46"/55"	Wall Mount Bracket	510mm x 160mm x 80mm (20" x 16.3" x 3.1")	3.3kg (7.3lbs)
WMK-65-70	0608641029154	Wall Mount for 65" / 70"	Wall Mount Bracket	810mm x 160mm x 80mm (31.9" x 16.3" x 3.1")	4.7kgs (10.4lbs)
WMK-84	0608641029161	Wall Mount for 84"	Wall Mount Bracket	810mm x 160mm x 80mm (31.9" x 16.3" x 3.1")	4.7kgs (10.4lbs)
DTS-42-46-55	0608641029185	Desk Top Stand 42" / 46" / 55"	Desk Top Stand	734mm x 374mm x 80mm (28.9" x 14.72" x 3.1")	14.03kgs (30.9lbs)
DTS-65-70	0608641029192	Desk Top Stand 65" / 70"	Desk Top Stand	979mm x 384mm x 323mm (38.5" x 15.1" x 12.7")	18.6kgs (41lbs)
DTS-84	0608641029208	Desk Top Stand 84"	Desk Top Stand	TBA	TBA
MOTOWMK	0608641029215	Height Adjustable Wall Mount / Trolley for LED	Can lift upto 150KGS	1620mm x 960mm x 2220mm (63.7" x 37.8" x 87.4")	TBA
MOBWMK	0608641029376	TouchIT LED Mobile Stand (MOBWMK)	Suitable for 32" to 84" LED 5 Fixed Height Positions	1880mm x 910mm x 535mm (74" x 35.8mm x 21")	65kg (143lbs)



## STANDS & MOUNTS - IWB

Part Code	UPC Part Code	Product Type	Description	Packaged Dimensions mm (inches)	Packaged Weight kg (lbs)
STANDMAN	609456503280	TouchIT IWB Stand (Manual)	Mobile Stand - TouchIT Board (Manual Height Adjust)	1310mm x 255mm x 775mm (51" 1/8 x 10" 1/8 x 30" 1/2)	50kgs (110lbs)
STANDELEC	609456503297	TouchIT IWB Stand (Electric)	Mobile Stand - TouchIT Board (Electric Height Adjust)	1060mm x 800mm x 445mm (41" 6/8 x 31" 1/2 x 17" 1/2)	65kgs (143lbs)



# SPECIFICATIONS

## DIGITAL SIGNAGE

### Features:

Dimensions: 116.6mm x 112.0mm x 39.0mm (4.59" x 4.41" x 1.55")

Cooling: Active | Drive: mSATA | Color options: Black only | Chassis design: Aluminum and Plastic

Power Supply: 19V, 65W DC-DC power adapter included

### Additional Features:

Antenna for WIFI | Front Panel USB 2.0 | VESA mounting bracket included

### Technical Specification:

Processor support - Intel® Core™ i3 3217U Processor (1.8 GHz, Dual Core processor with 3 MB smart cache)

Supports Intel® 64 architecture 3 | Chipset - Intel® Q577 Express Chipset

Graphics - Intel® HD Graphics 4000 - Dual HDMI Ports supporting dual independent display capability

Peripheral Connectivity - Integrated Intel 10/100/1000 Network Connection - Three Hi-Speed USB 2.0 ports (two back panel ports and one front panel port)

Expansion Capabilities - One full length mini-PCIe slot supporting mSATA capability - One half length mini-PCIe slot with dual USB 2.0 ports routed

System BIOS - Intel® Visual Bios - 64 Mb Flash EEPROM with Intel® Platform Innovation Framework for EFI Plug and Play - Advanced configuration and power interface V3.0b, SMBIOS2.5 - Intel® Express BIOS update support fast boot bios optimized post for almost instant-on access to pc from power on

System Memory - 8GB memory

Voltage - 1.5V and 1.35V

Hardware Management Features - Processor fan speed control - Voltage and temperature sensing - Fan sensor inputs used to monitor fan activity - ACPI-compliant power management control intel® pro 10/100/1000 network connection - Low-power design

Audio - Intel® High Definition Audio (Intel HD Audio) via two HDMI 1.4a outputs supporting 8 channel (7.1) digital audio

Indicators and Controls - HDD LED, Power LED - Power on/off

Mechanical - Chassis size: 4.59" x 4.41" x 1.55" (116.6mm x 112.0mm x 39.0mm) - Board size: 4" x 4" (101.6mm x 101.6mm) 530g or 1.17lbs





TouchIT Technologies

2051 Villa, Suite 104

Birmingham, MI, 48009

USA

[sales@touchittechnologies.com](mailto:sales@touchittechnologies.com)

USA - 248 764 1084

UK - 0208 819 9641

AUSTRALIA - 0290 370 130

ASIA PAC Sales +886 955 771 765

HONG KONG Sales +85 258 083 087

Distributed By:

