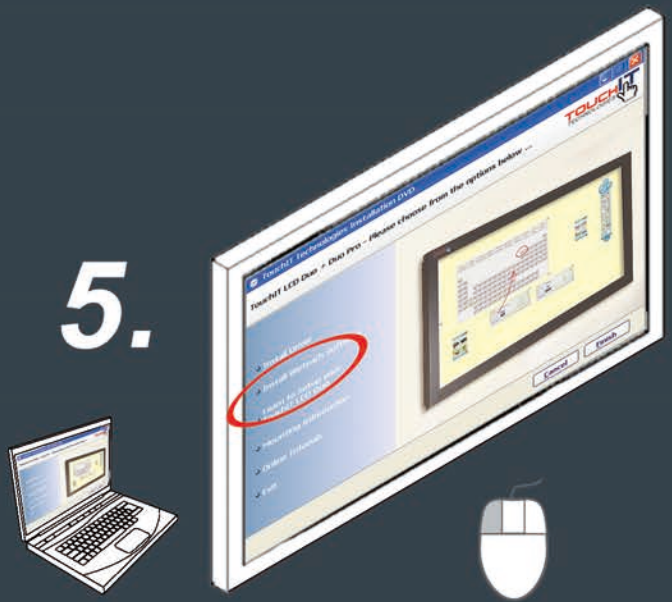
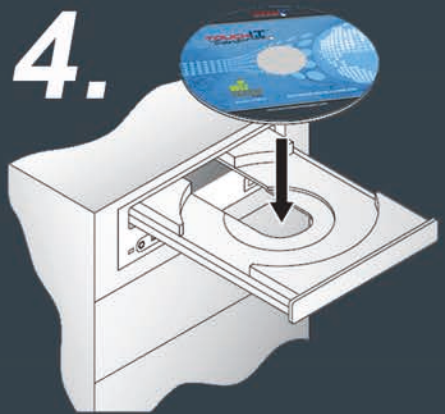
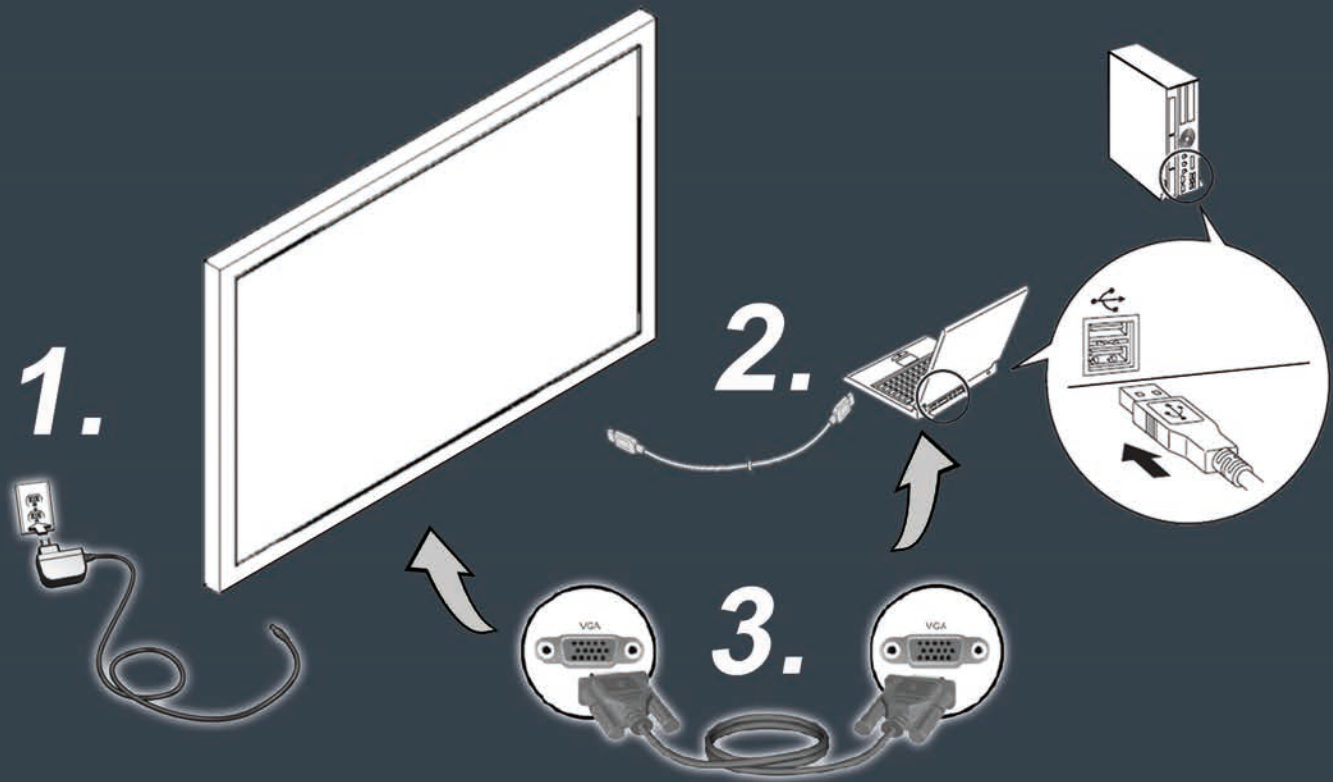


Touchboards

205 Westwood Ave, Long Branch, NJ 07740
Phone: 866-94 BOARDS (26273) / (732)-222-1511
Fax: (732)-222-7088 | E-mail: sales@touchboards.com



Package Contents

1 x TouchIT LCD
1 x Remote Control
2 x AAA Batteries
1 x Power Cord
1 x USB Cable
1 x Software CD
1 x Fixing Screws
1 x VGA Cable
1 x Audio Cable

TouchIT LCD Duo (& Pro) Quick Start Guide

Before you begin, please make sure the LCD is correctly mounted to the wall or mobile stand.

- 1. Connect the LCD to a mains AC power outlet (Socket)*
- 2. Connect one end the supplied USB cable to the TouchIT LCD Duo's USB Connection and the other end to any available USB port on your computer or laptop.*
- 3. Connect one of the the supplied VGA cable to the TouchIT LCD Duo's VGA connection and the other end to the available VGA port on your computer of laptop. (You may also use a HDMI Cable)*

"Toggle" your computer display so the image is also shown on your computer and the LCD. Ensure you have the LCD on the correct channel for the cable you are using.

- 4. Insert the CD that came with your TouchIT LCD Duo into your CD drive. (Windows Only - The CD will autorun - if not, navigate to your CD drive and double click on amplayer.exe. MAC or Linux - browse to the relevant driver folder on the CD for the driver you require.)*

- 5. Install WizTeach Software by clicking on the relevant button on the CD menu (To ensure you have the latest version of the software, please visit www.touchittechnologies.com/downloads/) (MAC & Linux - Install the Driver & Wizteach software)*

Under Windows OS, there is no calibration or drivers to install. Simply touch the screen to control your computer.

You now have full control of your computer from the TouchIT LCD Duo. Touch for a left click, touch and hold for a right click.

Double click the TouchIT Wizteach logo to open the Wizteach software.



www.touchittechnologies.com