

Certificate of Conformance

Cleanroom Coverall					
Part Number	Manufacturer	PO#	Test Number	Description	
JLM6200NB	Trans Tech		TTQAP28	ESD Cleanroom Smock	

Requirements for passing TTQAP

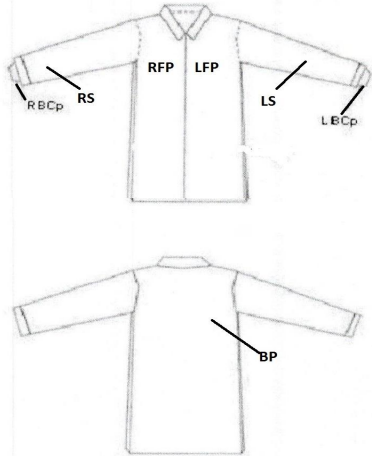
ANSI/ESD STM 2.1

<i>TTQAP28</i>		
Part Number	Measuring Apparatus	Serial Number
JLM6200 - Navy Blue	Metriso 3000	WE2760

Environment	
RH%	Temperature (F)
12%	70F

Low Relative Humidity 12%RH		Resistance Ohms	
Test Type	Test Location	Tejin Fabric	TT6000
Point to Point Resistance	RS to RS	3.40E+07	2.89E+05
	RS ot RFP	5.16E+07	2.10E+05
	RS to LFP	5.36E+07	2.63E+05
	RS to BP	8.90E+07	3.11E+05
	RS to LS	8.18E+07	2.98E+05
	RS to LBCP	2.13E+07	3.89E+05
	RBCP to LBCP	5.09E+05	4.99E+05
Minimum		5.09E+05	2.10E+05
Maximum		8.90E+07	4.99E+05
Average		4.74E+07	3.23E+05

Figure 1 – Resistance Point to Point



Key
LS-Left Sleeve
LFP-Left Front Panel
BP-Back Panel
RFP-Right Front Panel
RS-Right Sleeve
BCP Body Contact Point

The JLM Series Cleanroom Frock meets the requirements listed in ANSI/ESD S20.20 for a “Groundable Static Control Garment” per the test method listed in ANSI/ESD STM2.1.