



HARDWARE INCLUDED:

- Basic overhead rail mounting bracket - includes M6 oval nut, bolt, washer, and light mounting piece
- 10 ft power cord (not pictured)
- Cascade cover

Optional Accessories:

- Cascade connector cord for connecting up to 10 lights to one power source, sold separately.

6": 14-95035161

12": 14-95035162

36": 14-95035163

- Swivel overhead rail mounting bracket
14-95035159

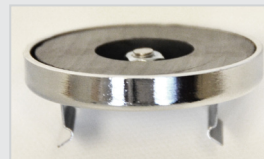


Cascade Cover

Mounting bracket assembly:



Basic overhead rail assembly



Magnetic assembly



Swivel overhead rail assembly

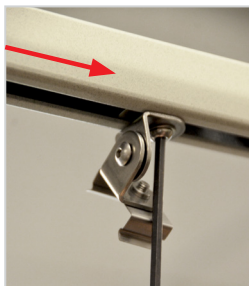
Basic Overhead Rail Mounting

Assemble mounting bracket as shown above. Insert LED light mounting bracket into overhead rail by sliding M6 oval nut into balancer rail. Once in the correct position for the size of the light fixture, tighten oval nut into place. Once brackets have been assembled and attached to the overhead rail, LED lights simply snap into the brackets. A cascade cover is provided for placement over cascade chain connection when not in use.



Swivel Overhead Rail Mounting

Assemble mounting bracket as shown above. Insert LED light mounting bracket into overhead rail by sliding M6 oval nut into balancer rail. Once in the correct position for the size of the light fixture, tighten oval nut into place. (Loosen the bolt in the middle of the bracket to gain easier access to oval nut bolt. Retighten once bracket is in place.) Once brackets have been assembled and attached to the overhead rail, LED lights simply snap into the brackets. A cascade cover is provided for placement over cascade chain connection when not in use.



Left: LED lighting can be focused on a specific area of the workstation with the included hardware. Simply loosen the bolt in the middle of the bracket and swivel to correct position, then retighten the bolt.

Magnetic Mounting

LED Light fixtures with the magnetic option include magnetic hardware to be attached to the top of the light. Assemble magnetic bracket as shown below, then simply mount magnetic light to any metal surface, including underneath metal shelves. Magnetic LED lighting allows for easy repositioning and can be relocated as often as necessary.

