



Trijicon
IR-HUNTER[®]

THERMAL RIFLESCOPE

Lights-Out Precision for a Superior
Hunting Advantage



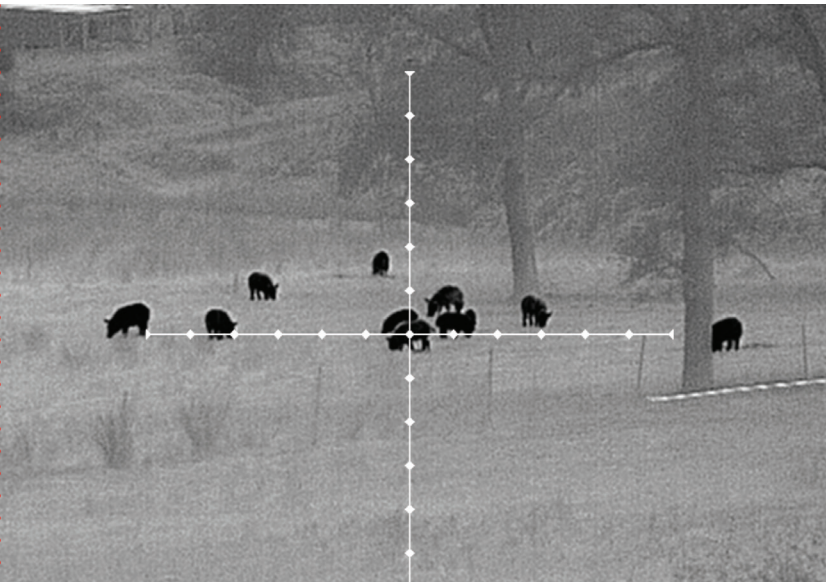
Electro Optics Division

Trijicon IR-HUNTER®

Take advantage of a 640x480 resolution sensor featuring 12 micron technology, a 60 Hz frame-rate system, Enhanced Target Recognition (ETR), 8x digital electronic zoom and a MIL Spec digital OLED micro display for crisp, precise imagery. With similar turret knob controls as your day optic, the IR-HUNTER lets you take your shot with confidence, even in complete darkness.



- Windage/Elevation Position Readouts (MK3 only)
- Multiple Reticle Options
- Multiple Reticle Save Locations (MK3 only)
- Stadiametric Rangefinder (MK3 only)
- Objective Lens Flip Cap
- Download/Video Cable (Optional on MK2/Standard on MK3)
- Throw Lever Mount Included
- Battery Extender (Optional On MK2/Standard On MK3)



640x480 Thermal Sensor

Offers clear, crisp imagery through smoke, dust and complete darkness

Enhanced Target Recognition (ETR)

Get enhanced, detailed target images that avoid washouts

8x Digital Zoom

Advanced built-in sighting system maintains boresight and increases accuracy

12 Micron Technology

Reduced size and weight without compromising image quality or magnification

Crisp, Detailed Reticles

Clear reticle and symbols for speed and accuracy

Turret Knobs for Superior Ergonomics

When you're in the dark under pressure, you're still confident

Full Digital Video

Take advantage of full digital signal processing for pristine video quality

Made in the USA

Built for shooters by shooters right here in America

Traditional Night Vision vs. Trijicon Electro Optics Thermal Technology



12µm vs. 17µm Core Technology

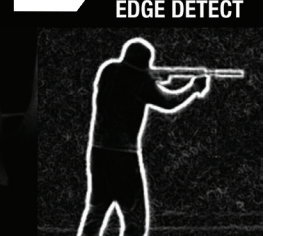
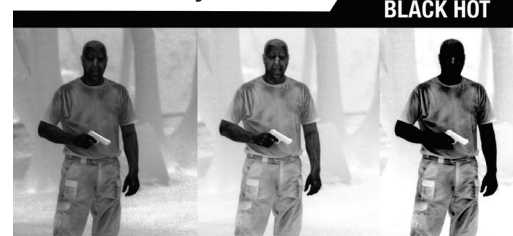


640x480 vs. 320x240 Resolution



Trijicon Electro Optics
12µm, 640x480 @ 60Hz

Advanced Polarity Control



SPECIFICATIONS

SENSOR TYPE

Uncooled VOx (Vanadium Oxide)

THERMAL SENSITIVITY

<50 mK

SENSOR RESOLUTION

640x480 Pixels

SENSOR PITCH

12 Micron

FRAME RATE

60 Hz

SPECTRAL RESPONSE

8 – 12 Microns

DISPLAY TYPE

Digital OLED

DISPLAY RESOLUTION

640x480 Pixels

BASIC FEATURES

E-Zoom, Polarity

ADVANCED FEATURES

DCE – Digital Contrast Enhancement

ETR – Enhanced Target Recognition

RANGEFINDER – Stadiametric

START-UP TIME

Approx. 5 Seconds

VIDEO OUTPUT

Analogue RS-170 (with Optional Cable)

BATTERY TYPE

MK2: 2 x CR123

MK3: 3 x CR123

BATTERY LIFE

MK2 Approx. 4 hours

MK3 Approx. 6 hours

WEAPON MOUNT

Quick Detach

RETICLE

Simple and Complex Reticles

Digital Readouts (MK3)

4 Save Locations (MK3)

WEIGHT

MK2 20mm: 29.1 oz (825g)

MK2 35mm/MK3 35mm: 34.9 oz (989g)

MK3 60mm: 37 oz (1050g)

DIMENSIONS

1.5x Model 6.5" L x 2.9" H x 3.1" W

2.5x Model 7.4" L x 2.9" H x 3.1" W

4.5x Model 7.6" L x 3.1" H x 3.3" W

DIOPTER

-6/+2

EYE RELIEF

27mm

ENVIRONMENTAL

-40c to +55c Operating

-45c to +75c Storage

MODELS

© 2018 Trijicon, Inc. | P.O. Box 930059 | 49385 Shafer Avenue | Wixom, Michigan | 48393-0059 USA
530.889.2159 | customerservice@Trijicon.com | TrijiconEO.com | PML4061 Rev(1) 0118

EXPORT
WARNING

Export of the commodities described herein is strictly prohibited without a valid export license issued by the U.S. Department of State, Directorate of Defense Trade Controls as proscribed in the International Traffic in Arms Regulations (ITAR), Title 22 Code of Federal Regulation, Parts 120-130