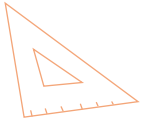


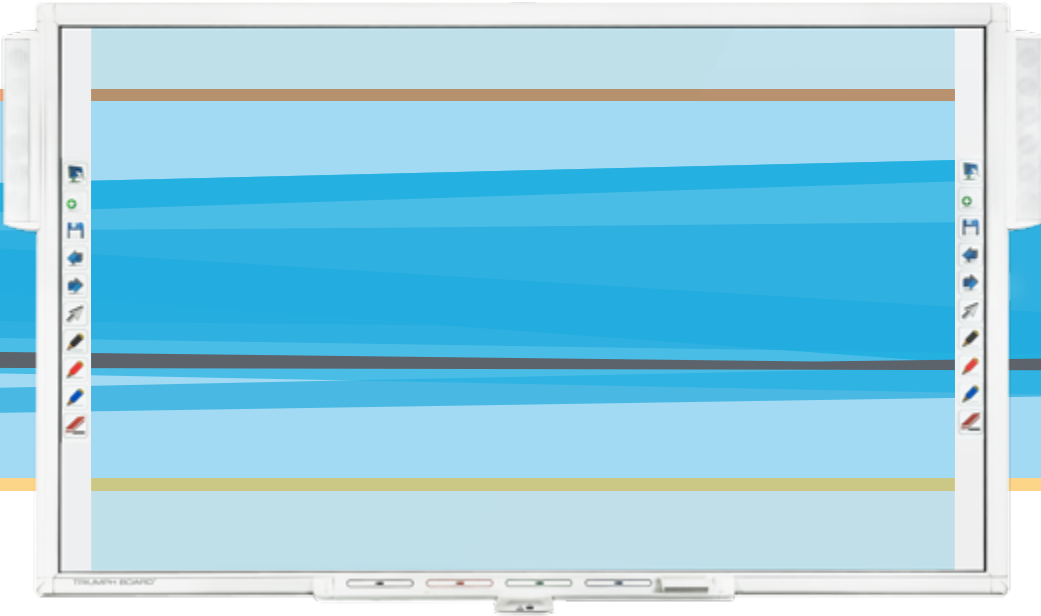


EDUCATION



# Touchboards

205 Westwood Ave, Long Branch, NJ 07740  
Phone: 866-94 BOARDS (26273) / (732)-222-1511  
Fax: (732)-222-7088 | E-mail: [sales@touchboards.com](mailto:sales@touchboards.com)



TRIUMPH BOARD®  
*One Idea Ahead*

INTERACTIVE WHITEBOARDS  
PROJECTORS  
VOTING SYSTEMS

Abc

$\sqrt{33}$





TRIUMPH BOARD is a manufacturer of interactive presentation solutions and audio-visual equipment. We sell to the Educational and Corporate sectors across Europe, the Middle East, Africa, North America and going World Wide now.

The Triumph Board product offering includes interactive whiteboards, touch LED LCD's, audience response systems, document cameras, data projectors, supporting software and other related products.

TRIUMPH BOARD is able to deliver unbeatable interactive solutions, with best in class software on best in class hardware, due to its global partnership with RM Education (RM Easiteach), Vision Objects (MyScript Stylus), DisplayNote and Texas Instruments Incorporated.

The strategy of combining ISO certified intelligent design and efficient manufacturing enables TRIUMPH BOARD to deliver unbeatable solutions at unbeatable prices.

No message is complete without a powerful presentation, thus TRIUMPH BOARD has built its business on being "One Idea Ahead" in interactive solutions that meet the evolving needs of users and enable the presenter to perform at the next level! TRIUMPH BOARD products are created to enhance presentation effectiveness, in an educational or corporate environment.

**TRIUMPH BOARD has developed country partners that enable us to promote, educate and install our product line on local markets with country language support.**

## About us

We are proud of our successes and look forward to surpassing your expectations in the future!



## Interactive Whiteboards

TRIUMPH BOARD offers an array of award winning interactive whiteboard solutions. With the TRIUMPH BOARD interactive whiteboard you will be able to learn and teach in classroom settings or create company presentations within the corporate environment. TRIUMPH BOARD is offering several types of interactive whiteboard technologies that include IR cell LED Optical, Resistive, IR & Ultrasound as well as IR & Laser technologies.

Abc



## Interactive Touch Screens

We have developed fully integrated, professional solution – the TRIUMPH BOARD MULTI Touch LED LCD Series to suit all types of applications for classrooms or meeting rooms. LED LCD is an effective presentation tool to involve the audience into the action with direct computer control through MULTI Touch LED LCD.



## Interactive Presentation Products

TRIUMPH BOARD provides a range of audio-visual presentation products to suit all types of applications from interactive/ UST and ST Projectors, Documents Cameras, Tablets to Audience Response Systems.

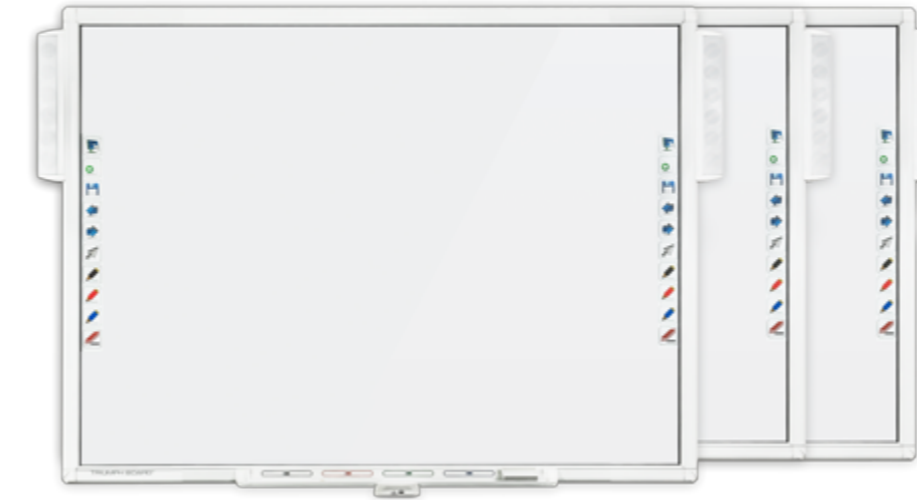




Innovative, easy to use and brings interactivity to any environment.

# Interactive Whiteboards

Multi Touch Series 78"/89"/96"



- True Multi Touch – up to 6 users can write and control objects simultaneously
- Low glare porcelain enameled e3 steel surface – ecological, antibacterial and anti-vandal with cradle to cradle certification
- Multipurpose –also allows the use of traditional dry erase markers
- Precise calibration, easy to mount
- Hotkey strips for software tools shortcuts
- Software: TRIUMPH CLOUD\*, TB Comenius, RM Easiteach Next Generation, MyScript Stylus

\* Optional

The best in class interactive whiteboards with a ceramic steel surface and simultaneous writing.

IR Cell LED optical technology

Windows, Mac and Linux compatible

Connection to any computer via USB or Wi-Fi (optional)





# Interactive Whiteboards

## RESISTIVE 78"



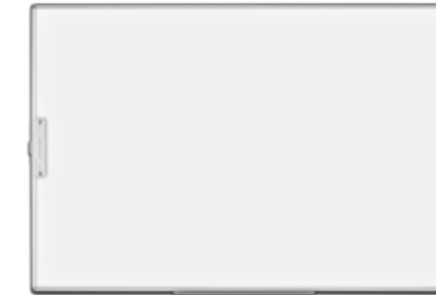
A single touch interactive whiteboard based on resistive technology - the most common technology in the world.

- Writing and drawing by finger or plastic stylus
- Special hard-coated polyester surface compatible with dry-erase markers
- Hotkeys for RM Easiteach software tools short cuts fully integrated in the board frame
- Software: TRIUMPH CLOUD\*, RM Easiteach Next Generation, MyScript Stylus

\* Optional



## ULTRA SLIM 78"



A pen-based interactive whiteboard that uses infrared and ultrasound positioning technology.

- Comes with an ergonomic electronic stylus
- Low glare porcelain enameled steel surface
- Hotkey strips for software short cuts
- Software: TRIUMPH CLOUD\*, TB Comenius, RM Easiteach Next Generation, MyScript Stylus

\* Optional



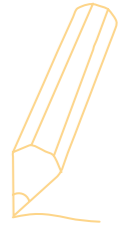
## PORTABLE SLIM



A mobile interactive device which instantly turns a traditional whiteboard or even the surface of a wall into an interactive whiteboard using infrared and ultrasound positioning technology.

- Up to 125" projection screen
- Ergonomic electronic stylus with improved durability
- Hotkey stickers enabling quick access to the most used software functions
- Low weight and small dimensions
- Wireless ready (upgradable by wireless upgrade kit)
- Software: TRIUMPH CLOUD\*, TB Comenius, RM Easiteach Next Generation, MyScript Stylus

\* Optional





3+1

## Accessories

### MT Speakers



40W sound bars for MULTI Touch interactive whiteboards

- No power supply required
- Only one USB cable to PC
- No audio cable to PC required
- 1x SD card slot
- 2x USB output port
- Volume control by Audio HUB
- Interactive pentray port

### Active Pentray



4 color magnetic styluses and erase

- Works wired as well as wirelessly (WR HDI HUB needed)
- Works with TB Comenius (5.0.2.11 and above)

### Document Camera A405



The ideal tool for image capturing and video recording

- Resolution 5 Mpx
- Scans documents & 3D objects
- Records high resolution videos
- Plug-n-Play USB 2.0
- 14 LED lights for bad light conditions
- Software ArcSoft MediaImpression HD and ABBYY FineReader Sprin





## Stands

### LiftBox



The LiftBox for IWB's is the most reliable and stable product on the market for high-low adjustment (400 mm) for whiteboards and projectors without electric power.

With a total weight capacity up to 70 kilos LiftBox comes in a compact and stylish white design that is hidden behind the whiteboard. Both a floor support for safe mounting on non-supporting walls and a mobile stand are part of the product range as well as a wide range of accessories.



### Mobile Stand with Easy Lift System

Mobile Stand with Easy Lift System is equipped with a pneumatic lifting system that allows for adjusting the height within a range of 48 cm.

Designed for:  
 Interactive whiteboards TRIUMPH BOARD 78", 89", 96" MULTI Touch, 78" ULTRA SLIM, ULTRA Touch 79"/89", TRIUMPH BOARD Projectors Series



- Ergonomic and easy to use
- Quality product, safe to use
- Long product lifetime
- Fast and easy installation, maintenance-free
- Low transport and installation cost



205 Westwood Ave, Long Branch, NJ 07740  
 Phone: 866-94 BOARDS (26273) / (732)-222-1511  
 Fax: (732)-222-7088 | E-mail: sales@touchboards.com



## Audience Response Systems

Voting RF450

Voting RF550



√33

Vote everywhere and anytime with flexible interactive Wireless Audience Response Systems, fully integrated with Microsoft PowerPoint.

- TB VOTE software included
- User friendly visual working environment
- Real-time feedback
- Powerful reporting and statistics
- 1 teacher clicker and 25 student clickers (extendable to up to 500 users)
- LCD Display showing all inputs (RF 550 only)



# Projectors

INTERACTIVE PROJECTORS  
PJ3000i UST-W DLP  
PJ2000i UST DLP

Multi touch technology is integrated directly into the projector. The Laser Curtain module may be easily mounted onto the standard whiteboard, creating an IR beam that covers the whole board. The IR camera integrated with the projector senses when a finger, stylus or pen touches the surface. Up to 10 touch points!

- True multi-touch (up to 10-Touch inputs)
- Laser Curtain module powered from the projector – no extra cables needed
- Ultra Short Throw Lens – position the projectors even closer to the wall, eliminating shadows
- WXGA 3500 / XGA 3000 ANSI Lumens
- BrilliantColor™ and DLP® technology by Texas Instruments
- Software: TRIUMPH CLOUD\*, TB Comenius Office, RM Easiteach Next Generation, MyScript Stylus

\* Optional



ULTRA Touch 89"/79"  
Whiteboards



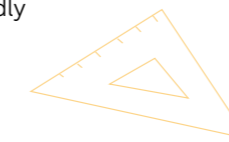
ULTRA Touch whiteboard with e3 ceramic steel surface is ideal for use with interactive projectors. ULTRA Touch whiteboard has preassembled holes for Laser Curtain, wall mounts and fixings.

PROJECTORS  
PJ3000 UST-W DLP  
PJ2000 UST DLP



Perfect for teaching - maximize space in the classroom for teachers and students. Ultra Short Throw Lens - position the projectors even closer to the wall eliminating shadows on the screen and allowing you to present with ease.

- WXGA 3500 / XGA 3000 ANSI Lumens
- BrilliantColor™ and DLP® technology by Texas Instruments
- Contrast: 3000:1 Native, 15000:1 Hi-Contrast mode
- Future-proof technology for the classroom with 2D and 3D lessons
- Environmentally friendly



PROJECTOR  
PJ1000 ST DLP



Minimize distractions and maximize the impact of your presentations with an affordable short throw distance solution.

- Short Throw Lens - position the projectors closer to the wall, reducing shadows
- XGA 3000 ANSI Lumens
- Incredible contrast of 18000:1 in Hi-Contrast mode
- BrilliantColor™ and DLP® technology by Texas Instruments
- Long lamp-life: 5000 hours
- Simple to install





# Software

## TRIUMPH CLOUD

### Online Annotation

TRIUMPH CLOUD is unique online annotation software that runs on all interactive whiteboards, interactive LED LCD's, interactive projectors, Tablets and other systems using latest web technologies. TRIUMPH CLOUD can always be used at any place and with any hardware and operating system (Windows, MAC OS, iOS, Android, Linux, Chrome, any...)

- Online (browser based)
- Hardware – independent
- No installation and automatic updates
- Latest technology
- Automatic data saving in the cloud
- Automatic updates
- Ease of use, mobile content
- Networking and collaboration
- Localized into 27 languages

## TB Comenius

### Annotation

To maximize interaction opportunities, TB Comenius annotation software provides tools and features specifically designed to enhance interactive lessons or sessions. TB Comenius enables you to create or edit any content by using many interesting functions.

- Create, edit and annotate even over live movies
- Clipart images, hyperlinks, zoom
- Arrange, transform, fill and group objects
- Modify and customize shapes to your requirements
- Screen capture from the PC and insert your own images
- Full Screen Tools, Geometry drawings, Protractor, Ruler, Compass
- Localized into 26 languages!



## TB Comenius Office

### Annotation

TB Comenius Office is a perfect tool for making annotations in a company or even educational environment. It offers the possibility of creating and presenting content as well as annotating any kind of background.

- Simple and clear menu options
- Customizable floating toolbar
- Screen blocking, spotlight, screen zoom in/out, etc.
- Possibility of annotating any background
- Toolbox (Calendar, Screen Camera, Clock, Timer)

TRIUMPH BOARD Software bundle offers everything you need and make lessons more engaging.



## RM Easitech Next Generation

### Education

The best comprehensive educational and teaching software with text, language, spoken and numerical tools and a multimedia databank.

- Over 2782 items including pictures, video, audio, etc.
- 48 widgets, special effects and content of more than 10 000 lessons and activities in 16 languages
- 39 interface languages, 136 teacher support materials including 80 video tutorials
- RM Easitech is a recognized leader in the area of educational software
- RM Easitech enables the creation of personalized lessons and resources from scratch as well as access to a wide range of content that can be used or adapted to suit your own needs

## MyScript Stylus

### Handwriting recognition

MyScript Stylus - software for handwriting recognition MyScript Stylus converts your natural handwriting into digital text in real time and provides the highest recognition accuracy rate on the market.

- Includes Calculator – enables the solution of mathematical equations, conversion of symbols and digits and gives results in real time
- Highest accuracy on the market with consistent quality for all languages
- Recognition of all kinds of writing styles
- Largest language coverage: recognition of 29 languages using the following alphabets or ideograms: Arabic, Chinese, Cyrillic, Devanagari, Greek, Hebrew, Japanese, Korean, Latin, Tamil and Thai

## Display Note

### Collaboration

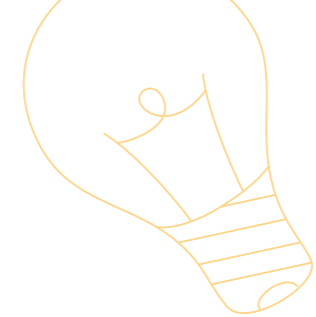
With Display Note you can capture the presenter's notes, slides, images and video in real-time on your own device. You can add your own notes and work together in real-time collaboration.

- Works on almost any device and across all the major platforms (Windows, Android, iOS and Mac OS)
- Add written notes, post-its and references to any slide, image and video
- Share annotations with the presenter and other connected student devices
- Send private messages - the presenter can send and receive private messages to one or more participants
- Display Note lets presenters and the audience connect like never before and on the platform / device that suits them



# Specification

## Interactive Whiteboards



33



	MULTI Touch 78"	MULTI Touch 89"	MULTI Touch 96"
<b>EAN:</b>	8592580101458 / 8592580101601	8592580101465 / 8592580101618	8592580101472 / 8592580101625
<b>Aspect Ratio:</b>	4:3	16:10 / 16:9	16:9
<b>Technology:</b>	IR (Infrared) cell LED optical	IR (Infrared) cell LED optical	IR (Infrared) cell LED optical
<b>Touch Input:</b>	4 / 6	4 / 6	4 / 6
<b>Resolution:</b>	12800 x 9600	12800 x 9600	12800 x 9600
<b>Active Screen Area Size:</b>	1590 x 1183 mm (78" diagonal)	1944 x 1127 mm (89" diagonal)	2145 x 1127 mm (96" diagonal)
<b>Projection Screen Area Size:</b>	1557 x 1168 mm	1803 x 1127 mm	2004 x 1127 mm
<b>Board Size without Packing:</b>	1693 x 1284 x 31 mm (without plastic pen tray)	2060 x 1244 x 31 mm (without plastic pen tray)	2269 x 1249 x 30 mm (without plastic pen tray)
<b>Working Environment:</b>	-20 to 40 °C	-20 to 40 °C	-20 to 40 °C
<b>Cable Length:</b>	6 m	6 m	6 m
<b>Response Time:</b>	6 ms	6 ms	6 ms
<b>Interface Type:</b>	USB 2.0 / 2.4 GHz RF Wireless (optional)	USB 2.0 / 2.4 GHz RF Wireless (optional)	USB 2.0 / 2.4 GHz RF Wireless (optional)
<b>Power Supply:</b>	USB DC 5V from PC (optional wireless PC receiver and USB adaptor / 220V)	USB DC 5V from PC (optional wireless PC receiver and USB adaptor / 220V)	USB DC 5V from PC (optional wireless PC receiver and USB adaptor / 220V)
<b>Power Consumption:</b>	< 250 mA (wireless PC receiver 20mA)	< 250 mA (wireless PC receiver 20mA)	< 250 mA (wireless PC receiver 20mA)
<b>Temperature Range:</b>	-20 to 40°C, storage temperature -40 to 70°C	-20 to 40°C, storage temperature -40 to 70°C	-20 to 40°C, storage temperature -40 to 70°C
<b>Humidity Operating:</b>	30-90% non condensing, storage 0-95%,non condensing	30-90% non condensing, storage 0-95%,non condensing	30-90% non condensing, storage 0-95%,non condensing
<b>Platform:</b>	Windows 8, Windows 7, XP and Vista, Linux, MAC	Windows 8, Windows 7, XP and Vista, Linux, MAC	Windows 8, Windows 7, XP and Vista, Linux, MAC
<b>Board Weight (net):</b>	27 kg	31 kg	34 kg

	RESISTIVE 78"
<b>EAN:</b>	8592580081583
<b>Active Screen Area Size:</b>	1590 x 1192 mm (78" diagonal)
<b>Aspect Ratio:</b>	4:3
<b>Technology:</b>	Touch sensitive (resistive)
<b>Resolution:</b>	16384 x 16384
<b>Projection Screen Area:</b>	1590 x 1192 mm (78" diagonal)
<b>Board Size without Packing:</b>	1690 x 1292 x 23 mm
<b>Interface Type:</b>	USB 2.0
<b>Cable Length:</b>	10 m
<b>Working Environment:</b>	-15 to 50°C
<b>Process Rate:</b>	500 points / second
<b>Power Supply:</b>	USB DC 5V from PC
<b>Power Consumption:</b>	< 1W
<b>Temperature Range:</b>	-15 to 50°C, storage temperature - 40 to 50°
<b>Humidity Operating:</b>	20-90% non condensing, storage 0-95%, non condensing
<b>Platform:</b>	Windows 8, Windows 7, XP, Vista
<b>Board Weight (net):</b>	22 kg

	ULTRA SLIM 78"
<b>EAN:</b>	8592580101199
<b>Active Screen Area Size:</b>	1723 x 1189 mm (78" diagonal)
<b>Technology:</b>	IR (Infrared) / Ultra sound
<b>Ultrasound Frequency:</b>	40 KHz
<b>IR Frequency:</b>	38 KHz
<b>RF (radio frequency):</b>	2.4 GHz
<b>Resolution:</b>	9600 x 9600
<b>Interface with PC:</b>	USB Port 1.1, 2.0, 3.0
<b>Response Time:</b>	80 Points Per Second
<b>Energy Consumption:</b>	50 mA
<b>Operation System:</b>	Windows 7 / Vista / XP / MAC / Linux
<b>Board Size without Packaging:</b>	1823 x 1229 x 39 mm
<b>Board Weight (net):</b>	22.2 kg
<b>Board Weight incl. Packing:</b>	27.5 kg
<b>Packaging Size:</b>	1915 x 1335 x 65 mm

	PORTABLE SLIM
<b>EAN:</b>	8592580091360
<b>Active Screen Size (mm):</b>	21" - 125"
<b>Technology:</b>	Infrared and ultrasonic
<b>Ultrasonic Frequency:</b>	40 KHz
<b>IR Frequency:</b>	38 KHz
<b>Radio Frequency:</b>	2.4 GHz
<b>Resolution:</b>	9600 x 9600
<b>Accuracy:</b>	1.5 mm
<b>Interface to PC:</b>	USB 2.0 or 2.4 GHz Wireless
<b>Transmission Speed:</b>	80 Points Per Second
<b>Response Time:</b>	over 200 Lines per Inch
<b>OS Platform:</b>	Windows 8 / Windows 7 / Vista / XP / Linux / MAC
<b>Power Supply / Consumption:</b>	USB 5V, Operating: 50 mA
<b>Sensor Unit Net Weight:</b>	70 g
<b>Sensor Size without Packing:</b>	212 x 41.4 x 14.5 mm
<b>Packing Size:</b>	313 x 61 x 153 mm

# Specification

## Accessories, Stands



### MT Speakers

EAN:	8592580091766
Sound Power:	2x20W = 40W
Mounting Brackets:	Perfectly fit to whiteboard frame and interactive pen-tray
Frequency:	45Hz – 18KHz
Connectivity Input:	USB (Micro port to PC), HDMI IWB / Min-in / Line-in / Interactive Pen-Tray
Connectivity Output:	Speaker RCA x 2 / USB A x 2 / SD Micro x 1
Supported OS:	Microsoft Windows, Linux, MAC
Power Consumption:	USB 12V, Operating Current: < = 1000mA
Audio Hub Dimension:	107 (L) x 65 (W) x 22 (H) mm
Speaker Dimension:	410 (L) x 55 (W) x 42 (D) mm
Optional:	2.4 GHz Wireless to PC / Wireless to Speaker



### Mobile Stand Lift

EAN:	8592580081651
Model:	TRIUMPH BOARD Mobile Stand with Easy Lift System
Designed for:	Interactive boards TRIUMPH BOARD 78", 89", 96" MULTI Touch / ULTRA SLIM
Material of Stand:	Welded steel sprayed with baked powder coating, plastic ends, pneumatic springs, connecting materials
Height Range of Stand:	480 mm
Maximum Load:	60 kg
Height of the lower edge of the board - bottom position:	660 mm, 760 mm, 860 mm (adjustable by the user during assembly of the Stand)
Stand Dimensions:	1660 x 810 x 70 mm
Net Weight:	11 kg
Gross Weight:	13 kg
Packing Size:	2 boxes, 1300 x 120 x 1400, 810 x 100 x 1650 mm

### Document Camera A405



EAN:	8592580041075
Image Sensor:	5.0 Megapixel CMOS Color Sensor
Resolution:	2592 x 1944
Image File Format:	JPG, NSD
Image Capture Speed:	1 second
Doc. File Format:	DOC, PDF, XLS
Video File Format:	WMV
Shooting Area:	Up to A4 Size - 8.3 x 11.7" (210 x 297 mm)
Operating Dimensions:	12.2 x 3.5 x 13.8" (310 x 89 x 350 mm)
Folded Dimensions:	4.1 x 3.5 x 13.8" (105 x 89 x 350 mm)
Interface:	USB 2.0
Focal Length:	4" to 15" (101 to 381 mm)
Focus:	Manual
Frame Rate:	30 frames per second (max)
LED Lights:	14
Operating System:	Windows 8, Windows 7, Windows Vista and Windows XP
White Balance:	Auto
Weight:	800g

## Document Camera, Audience Response Systems



### LiftBox for IWB's

EAN	8592580082436
Model	TRIUMPH BOARD LiftBox for IWB's
Designed for	MULTI Touch IWB 78/89/96, ULTRA Touch 79/89, ULTRA SLIM 78, TRIUMPH BOARD PROJECTOR Series
Material of Stand	Stainless steel
Stand Weight net	24 kg
Dimension of Stand net	1042 x 556 x 76mm
Stand Weight gross	25 kg
Dimension of Stand gross	1086 x 610 x 95mm
Lift	400 mm
Max. load	70 kg



### Voting RF450

EAN:	8592580011184
<b>Teacher and Student Keypad</b>	
Dimensions:	92 mm x 56 mm x 8 mm
LCD Display Dimensions:	
Weight:	32g (with batteries)
Key Buttons:	Teacher keypad – 15 buttons Student keypad – 15 buttons
Battery Requirement:	Japanese batteries incl.
Transmission Distance:	50 Meters
Power Saving Mode:	30 second go to sleep mode
Wavelength:	2.4 GHz
<b>USB PC Receiver</b>	
Dimensions:	62 mm x 30 mm x 10 mm
Power:	USB Port
Weight:	15g
Transmission Distance:	50 Meters
Receiving Angle:	360°
Connection:	USB Port
RF Wavelength	2.4 GHz

### Voting RF550

EAN:	8592580081576
Dimensions:	91 mm x 55 mm x 8 mm
LCD Display Dimensions:	16 mm x 37 mm 1 row / 6 digits
Weight:	38g (with batteries)
Key Buttons:	Teacher keypad – 15 buttons Student keypad – 15 buttons
Battery Requirement:	Japanese batteries incl.
Transmission Distance:	50 Meters
Power Saving Mode:	30 second go to sleep mode
Wavelength:	2.4 GHz
Dimensions:	62 mm x 30 mm x 10 mm
Power:	USB Port
Weight:	15g
Transmission Distance:	50 Meters
Receiving Angle:	360°
Connection:	USB Port
RF Wavelength	2.4 GHz



# Specification

## Projectors



	PJ3000i UST-W DLP	PJ2000i UST DLP
EAN:	8592580081996	8592580082030
Intended for:	ULTRA Touch Board 89"	ULTRA Touch Board 78"
Display Technology:	Ultra Short Throw lens. Single 0.65" WXGA S450DMD + DDP4421 chip DLP Technology by Texas Instruments	Ultra Short Throw lens. Single 0.55" XGA S450DMD + DDP4421 chip DLP Technology by Texas Instruments
Native Resolution:	WXGA 1280 x 800	XGA 1024 x 768
Brightness - BRIGHT mode:	3500 ANSI Lumens	3000 ANSI Lumens
Contrast:	3000:1 Native, 15000:1 Hi-Contrast mode	3000:1 Native, 15000:1 Hi-Contrast mode
Lamp Life:	3000 hours (normal mode), 4000 hours (eco mode)	3000 hours (normal mode), 4000 hours (eco mode)
Throw Ratio:	0.35	0.35
Noise Level (Eco mode):	30dB	30dB
Displayable Color:	1.07 Billion	1.07 Billion
Projection Lens:	F/2.6; f=7.35mm, Fixed Zoom	F/2.6; f=7.35mm, Fixed Zoom
Projection Screen Size:	70" - 100" Diagonal 16:10	60" - 90" Diagonal 4:3
Projection Distance:	597mm - 731mm (for 89" - 670 mm)	597mm - 731mm (for 78" - 691 mm)
Zoom Type:	Fix zoom lens	Fix zoom lens
Maximum Resolution:	UXGA 1600 x 1200	UXGA 1600 x 1200
Computer Compatibility:	UXGA, SXGA, WXGA, HD, XGA, SVGA, VGA, Mac	UXGA, SXGA, WXGA, HD, XGA, SVGA, VGA, Mac
Standard I/O:	VGA in x2, VGA out x1, HDMI x1, S-Video x1, Composite Video x1, Audio in -RCA (L/R) x2, Audio in - 3.5mm jack x2, Audio out x1, microphone x1, Mini USB x1, RS232 D-Sub 9pin x1, DC 12V output x1	VGA in x2, VGA out x1, HDMI x1, S-Video x1, Composite Video x1, Audio in -RCA (L/R) x2, Audio in - 3.5mm jack x2, Audio out x1, microphone x1, Mini USB x1, RS232 D-Sub 9pin x1, DC 12V output x1
Aspect Ratio:	16:10 Native, 16:9 / 4:3 Compatible	4:3 Native, 16:9 / 16:10 Compatible
Offset:	125%	125%
Horizontal Scan Rate:	15.3 - 91.1kHz	15.3 - 91.1kHz
Vertical Scan Rate:	24 - 85Hz (120Hz for 3D)	24 - 85Hz (120Hz for 3D)
Keystone Correction:	Vertical: - 15/+15 degree (without Auto keystone)	Vertical: - 15/+15 degree (without Auto keystone)
Remote Control:	Universal Remote control	Universal Remote control
Power Supply:	100-240V, 50-60Hz	100-240V, 50-60Hz
Power Consumption:	240W : 300W ± 10% at 110 VAC / 0.5W < Standby mode	240W : 300W ± 10% at 110 VAC / 0.5W < Standby mode
Operating Conditions:	5°C - 40°C, Max. Humidity 85%, Max. Altitude 3000m	5°C - 40°C, Max. Humidity 85%, Max. Altitude 3000m
Security:	Security Bar, Kensington Lock, Password Protection	Security Bar, Kensington Lock, Password Protection
Basic Accessories:	AC Power Cord 1.8m, VGA Cable 1.8m, 2x Interactive Stylus, USB 5m Cable, Remote Control, Quick Start Card, CD User Manual, Warranty Card, Software: TB Comenius Office, MyScript Stylus, RM Easiteach Next Generation	AC Power Cord 1.8m, VGA Cable 1.8m, Remote Control, Quick Start Card, CD User Manual, Warranty Card
Optional Accessories:	Wall Mount - TRIUMPH BOARD PROJECTOR WALL MOUNT 2000/3000 Series	Wall Mount - TRIUMPH BOARD PROJECTOR WALL MOUNT 2000/3000 Series
RoHS:	Compliant	Compliant
Audio:	10W	10W
On Screen Display:	29 Languages: English (UK), Russian, Czech, Arabic, Bulgarian, Danish, Dutch, Croatian, Finnish, French, French (Canada), German, Greek, Hebrew, Hungarian, Italian, Latvian, Norwegian, Polish, Portuguese (POR), Romanian, Serbian, Slovak, Slovenian, Spanish, Spanish, (Mexico), Swedish, Turkish, Ukrainian	29 Languages: English (UK), Russian, Czech, Arabic, Bulgarian, Danish, Dutch, Croatian, Finnish, French, French (Canada), German, Greek, Hebrew, Hungarian, Italian, Latvian, Norwegian, Polish, Portuguese (POR), Romanian, Serbian, Slovak, Slovenian, Spanish, Spanish, (Mexico), Swedish, Turkish, Ukrainian
Net Weight:	7.7 kg	7.5 kg
Gross Weight:	11.5 kg	10.2 kg
Dimensions (W x D x H):	357 x 367 x 231 (including feet) 357 x 367 x 136 (excluding feet)	357 x 367 x 231 (including feet) 357 x 367 x 136 (excluding feet)
Packing:	1 box / 518 x 455 x 340 mm	1 box / 518 x 455 x 340 mm

Present Modes:	
Movie:	Maximum contrast and Color accuracy
sRGB:	Best Color Reproduction
User:	Memorizes user's settings
Presentation:	Default mode, perfect with computers or notebooks
Bright:	For environments with high ambient light (Brightest image)
Classroom:	1500 ANSI Lumens, perfect for installations with interactive whiteboards

### Touch Interface Specifications

CMOS	1/3", 720 x 480, 60fps
Image Size Support	70"-100"
Number of Touch Points	10 Multi-touch points
Calibration	Auto calibration / manual 4 points calibration
Accuracy (Offset)	±4 pixels @ < 2 mm non-planarity 100" surface
Hover (Z-depth)	5 ~ 8 mm @ < 2 mm non-planarity 100" surface
Driver Installation	Auto-installation when plug in USB cable (Windows only)
OS Support	Windows 8, Windows 7, Mac OS X
Minimum Stylus Diameter	5 mm @ 100"
Power Consumption of Curtain	12 V/0.2A (TBD)

### Laser Curtain Module Specification

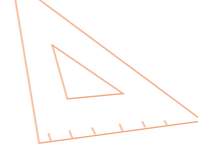
Laser Curtain	IR Laser 830nm, 20.000 hours
Distance of Curtain to Screen	2 cm
Whiteboard Non-Planarity	< 2 mm

### Environment / Safety

Laser Safety	Class-1 @ 100"
Operation Temperature	0° C ~ +40° C (without cooling fan)
Storage Temperature	-10° C ~ +60° C

## Whiteboards

	Ultra touch 79"	Ultra touch 89"
EAN	8592580101540	8592580101557
Aspect ratio	4:3	16:9
Active screen size area	1620 x 1183 mm (79" diagonal)	1930 x 1183 mm (89,1" diagonal)
Projection area	1558 x 1173 mm	1869 x 1173 mm
Board size without the packing	1660 x 1293 x 22 mm	1970 x 1293 x 22 mm
Board weight (net)	23.2 kg	27.5 kg
Board weight incl. packing	31.06 kg	36.86 kg
Packing size mm	1710 x 1343 x 33	2020 x 1343 x 33

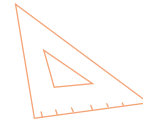


	PJ3000 UST-W DLP	PJ2000 UST DLP	PJ1000 ST DLP
EAN:	8592580081989	8592580081972	8592580082009
Intended for:	Interactive Whiteboards - MULTI Touch 89" / 96"	IWB - MULTI Touch 78", PORTABLE SLIM, ULTRA SLIM 78", RESISTIVE 78"	Interactive Whiteboards - MULTI Touch 78", PORTABLE SLIM, ULTRA SLIM 78", RESISTIVE 78"
Display Technology:	Ultra Short Throw lens. Single 0.65" WXGA S450DMD + DDP4421 chip DLP Technology by Texas Instruments	Ultra Short Throw lens. Single 0.55" XGA S450DMD + DDP4421 chip DLP Technology by Texas Instruments	Short Throw lens. Single 0.55" XGA S450DMD + DDP2431 chip DLP Technology by Texas Instruments
Native Resolution:	WXGA 1280 x 800	XGA 1024 x 768	XGA 1024 x 768
Brightness - BRIGHT mode:	3500 ANSI Lumens	3000 ANSI Lumens	3000 ANSI Lumens
Contrast:	3000:1 Native, 15000:1 Hi-Contrast mode	3000:1 Native, 15000:1 Hi-Contrast mode	3000:1 Native, 18000:1 Hi-Contrast mode
Lamp Life:	3000 hours (normal mode), 4000 hours (eco mode)	3000 hours (normal mode), 4000 hours (eco mode)	3500 hours (normal mode), 5000 hours (eco mode)
Throw Ratio:	0.35	0.35	0.62
Noise Level (Eco mode):	30dB	30dB	30dB
Displayable Color:	1.07 Billion	1.07 Billion	1.07 Billion
Projection Lens:	F/2.6; f=7.35mm, Fixed Zoom	F/2.6; f=7.35mm, Fixed Zoom	F/2.8; f=7.26mm, Fixed Zoom
Projection Screen Size:	70" - 100" Diagonal 16:10	60" - 90" Diagonal 4:3	60" - 90" Diagonal 4:3
Projection Distance:	597mm - 731mm (for 89" - 670 mm)	597mm - 731mm (for 78" - 691 mm)	750-1100 mm ( for 78" - 1050mm)
Zoom Type:	Fix zoom lens	Fix zoom lens	Fix zoom lens
Maximum Resolution	UXGA 1600 x 1200	UXGA 1600 x 1200	UXGA 1600 x 1200
Computer Compatibility:	UXGA, SXGA, WXGA, HD, XGA, SVGA, VGA, Mac	UXGA, SXGA, WXGA, HD, XGA, SVGA, VGA, Mac	UXGA, SXGA, WXGA, HD, XGA, SVGA, VGA, Mac
Standard I/O:	VGA in x2, VGA out x1, HDMI x1, S-Video x1, Composite Video x1, Audio in -RCA (L/R) x2, Audio in - 3.5mm jack x2, Audio out x1, microphone x1, Mini USB x1, RS232 D-Sub 9pin x1, DC 12V output x1	VGA in x2, VGA out x1, HDMI x1, S-Video x1, Composite Video x1, Audio in -RCA (L/R) x2, Audio in - 3.5mm jack x2, Audio out x1, microphone x1, Mini USB x1, RS232 D-Sub 9pin x1, DC 12V output x1	VGA in x2, VGA out x1, HDMI x1, S-Video x1, RJ45 x1, Composite Video x1, Audio in - 3.5 mm jack x1, Audio out x1, USB typ B x1, RS232 D-Sub 9pin x1
Aspect Ratio:	16:10 Native, 16:9 / 4:3 Compatible	4:3 Native, 16:9 / 16:10 Compatible	4:3 Native, 16:9/16:10 Compatible
Offset:	125%	125%	115% ± 5%
Horizontal Scan Rate:	15.3 - 91.1kHz	15.3 - 91.1kHz	15.3 - 91.1kHz
Vertical Scan Rate:	24 - 85Hz (120Hz for 3D)	24 - 85Hz (120Hz for 3D)	24 - 85Hz (120Hz for 3D)
Keystone Correction:	Vertical: - 15/+15 degree (without Auto keystone)	Vertical: - 15/+15 degree (without Auto keystone)	± 15° Vertical
Remote Control:	Universal Remote control	Universal Remote control	Universal Remote control
Power Supply:	100-240V, 50-60Hz	100-240V, 50-60Hz	100-240V, 50-60Hz
Power Consumption:	240W : 300W ± 10% at 110 VAC / 0.5W < Standby mode	240W : 300W ± 10% at 110 VAC / 0.5W < Standby mode	240W - 300W ± 10% at 110 VAC / < 0.5 Standby mode
Operating Conditions:	5°C - 40°C, Max. Humidity 85%, Max. Altitude 3000m	5°C - 40°C, Max. Humidity 85%, Max. Altitude 3000m	5°C - 40°C, Max. Humidity 85%, Max. Altitude 1000m
Security:	Security Bar, Kensington Lock, Password Protection	Security Bar, Kensington Lock, Password Protection	Security Bar, Kensington Lock, Password Protection
Basic accessories in the box:	AC Power Cord 1.8m, VGA Cable 1.8m, Remote Control, Quick Start Card, CD User Manual, Warranty Card	AC Power Cord 1.8m, VGA Cable 1.8m, Remote Control, Quick Start Card, CD User Manual, Warranty Card	AC Power Cord 1.8m, VGA Cable 1.8m, Remote Control, Quick Start Card, CD User Manual, Warranty Card
Optional Accessories:	Wall Mount - TRIUMPH BOARD PROJECTOR WALL MOUNT 2000/3000 Series	Wall Mount - TRIUMPH BOARD PROJECTOR WALL MOUNT 2000/3000 Series	Wall Mount
RoHS:	Compliant	Compliant	Compliant
Audio:	10W	10W	2W
On Screen Display:	29 Languages: English (UK), Russian, Czech, Arabic, Bulgarian, Danish, Dutch, Croatian, Finnish, French, French (Canada), German, Greek, Hebrew, Hungarian, Italian, Latvian, Norwegian, Polish, Portuguese (POR), Romanian, Serbian, Slovak, Slovenian, Spanish, Spanish, (Mexico), Swedish, Turkish, Ukrainian	29 Languages: English (UK), Russian, Czech, Arabic, Bulgarian, Danish, Dutch, Croatian, Finnish, French, French (Canada), German, Greek, Hebrew, Hungarian, Italian, Latvian, Norwegian, Polish, Portuguese (POR), Romanian, Serbian, Slovak, Slovenian, Spanish, Spanish, (Mexico), Swedish, Turkish, Ukrainian	29 Languages: English (UK), Russian, Czech, Arabic, Bulgarian, Danish, Dutch, Croatian, Finnish, French, French (Canada), German, Greek, Hebrew, Hungarian, Italian, Latvian, Norwegian, Polish, Portuguese (POR), Romanian, Serbian, Slovak, Slovenian, Spanish, Spanish, (Mexico), Swedish, Turkish, Ukrainian
Net Weight:	7.5 kg	2.7 kg	2.7 kg
Gross Weight:	10.2 kg	4.5 kg	4.5 kg
Dimensions (W x D x H):	357 x 367 x 231 (including feet) 357 x 367 x 136 (excluding feet)	357 x 367 x 231 (including feet) 357 x 367 x 136 (excluding feet)	357 x 367 x 136 (including feet) 284 x 222 x 76 (excluding feet)
Packing:	1 box / 518 x 455 x 340 mm	1 box / 518 x 455 x 340 mm	1 box / 418 x 330 x 147mm

### Present Modes:

Movie:	Maximum contrast and color accuracy
sRGB:	Best color reproduction
User:	Memorizes user's settings
Presentation:	Default mode, perfect with computers or notebooks
Bright:	For environments with high ambient light (Brightest image)
Classroom:	1500 ANSI Lumens, perfect for installations with interactive whiteboards





Contact us at:

3+1

[info@triumphboard.com](mailto:info@triumphboard.com)

[www.triumphboard.com](http://www.triumphboard.com)

[www.youtube.com/user/triumphboard](http://www.youtube.com/user/triumphboard)

  
**Touchboards**

205 Westwood Ave, Long Branch, NJ 07740  
Phone: 866-94 BOARDS (26273) / (732)-222-1511  
Fax: (732)-222-7088 | E-mail: [sales@touchboards.com](mailto:sales@touchboards.com)



Abc