



## Industrial Combustion Analyzer (O2/CO) w/ Wireless Handset



### Functions

- Measures: O2, CO, Inlet temperature, Flue temperature, differential pressure/draft
- Calculate Efficiency, CO2, Net temperature differential, Losses, Excess air, CO/CO2 ratio, Poison index

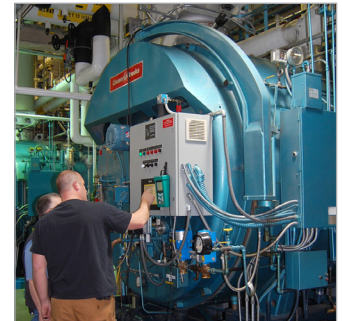
### Features

- Customizable sensor configurations with up to 7 sensors
- Wireless handset to base or PC
- On board plain paper printer
- Heated manifold to prevent condensation
- Automatic fresh air purge
- Rugged case
- 1-Year limited warranty

K9206 Pre-configured Sensor Combinations							
UEI Part Number	K9206	K9206C2	K9206C3	K9206C4	K9206C5	K9206C6	K9206C7
UPC	05353350729	05353350730	05353350731	05353350732	05353350733	05353350734	05353350735
O2 Sensor	X	X	X	X	X	X	X
CO Sensor	X	X	X	X	X	X	X
Pressure	X	X	X	X	X	X	X
Temperature	X	X	X	X	X	X	X
NO		X	X	X		X	X
NO2		X		X			X
SO2			X	X			X
HC/CO%/CO2					X	X	X

### Applications

Installation, commissioning and service of industrial/commercial oil, gas or biomass appliances  
 Combustion performance checks  
 Combustion efficiency checks  
 Flue draft





### Includes

- Combustion analyzer (K9206)
- CO Sensor (KC01/Q)
- O2 Sensor (OS11)
- 12" Flue probe w/ 15' Hose (KM CSP6)
- Battery charger (K9206BCH)
- Filter bypass (FB1)
- Replacement particle filter (16345)
- Sulfur filter (SF1)
- Water trap (WTS9106)
- Watertrap filter (WN8)
- Owners manual

### Specifications

Gas Measurement	Range	Resolution	Accuracy	Overrange
Pressure	0 to 150 mBar	0.01 mBar	±0.5% F.S	
CO2	0 to Fuel Value	0.10%	±0.3%	
Efficiency	0 to 100%	0.1%	±1%	
O2	0 to 25%	0.01%	-0.1% + 0.2%	
CO	10,000 ppm	1 ppm	<100 ppm ±5 ppm >100 ppm <1000 ppm ±5% rdg >2000 ppm <4000 ppm ±10% rdg	4000 ppm
NO (high range)	1000 ppm	1 ppm	<100 ppm ±5 ppm >100 ppm <1000 ppm ±5% rdg >2000 ppm <5000 ppm ±10% rdg	5000 ppm
NO (low range)	100 ppm	1 ppm	<100 ppm ±5 ppm >100 ppm <300 ppm	300 ppm
NO2	100 ppm	1 ppm	<100 ppm ±5 ppm >100 ppm <500 ppm ±10% rdg	1000 ppm
SO2 (low range)	100 ppm	1 ppm	<100 ppm ±5 ppm >100 ppm <500 ppm ±10% rdg	500 ppm
SO2 (high range)	2000 ppm	1 ppm	<100 ppm ±5 ppm >100 ppm <2000 ppm ±5% rdg >2000 ppm <5000 ppm ±10% rdg	5000 ppm
H2S	200 ppm	1 ppm	<100 ppm ±5 ppm >100 ppm <200 ppm ±5% rdg >2000 ppm <300 ppm ±10% rdg	300 ppm
Flue temperature	32° to 2140°F (0 to 1100°C)	0.1° F/C	1.8°F (1.0°C) ±0.3% rdg	
Inlet temperature	0° to 999°F (0° to 600°C)	0.1° F/C	1.8°F (1.0°C) ±0.3% rdg	

Languages	3	Fuel types	20
Auto purge	•	Gas units	5
Main purge time	2 to 60 min.	Temperature	°F/°C
Main purge interval time	10 to 120 min.	Pressure units	6
Auto zero	•		
Auto pump flow	•		
Auto set time	•		

### Downloads



Data Sheet



Made in UK