

UNI-EPDS

Short-Throw Projector Wall Mount with Extension Pole

LIST \$489.00	Color: White
Weight	50.00 lb. 22.7 kg
Weight Cap. per Head	50 lb. 22.7 kg
Depth	99.99 - 99.99 in. 2539.746 - 2539.746 mm
Mounting Reach	16.43 in. 417.3 mm
Extension	+67.00 in. 1701.8 mm
Pitch	+16.50° / -16.50°
Roll	+7.50° / -7.50°
Yaw	+41.00° / -41.00°

Downloads at Mounts.com



[Data Sheet](#)



[Bid Specification Document](#)



50 lb.



+41.00°
-41.00°



+7.50°
-7.50°



+16.50°
-16.50°



99.99-99.99 in

DESCRIPTION

The UNI-EPDS combines the universal PDS-PLUS-W Projector mount with a universal short-throw projector wall mount. The UNI-EPDS extends up to 67 in. from the wall when used with the included arm extension. It does not require a stud located in the center of the whiteboard or screen and is easy to mount to dual studs at 16, 18 or 24 in. spacing.

FEATURES

- Extends 67 in. from wall
- Includes patent-pending GearBox™ for amplifier PC, Mac mini™ or control modules
- Optional audio upgrade with UNI-AUD kit
- Best for classroom and conference rooms where ceiling installations are not possible
- OSHPD and DSA approved (OPA-2440-07)
- PDS-PLUS-W features slotted mounting base with six interchangeable legs (four long and two short) to reach wider mounting points



Touchboards

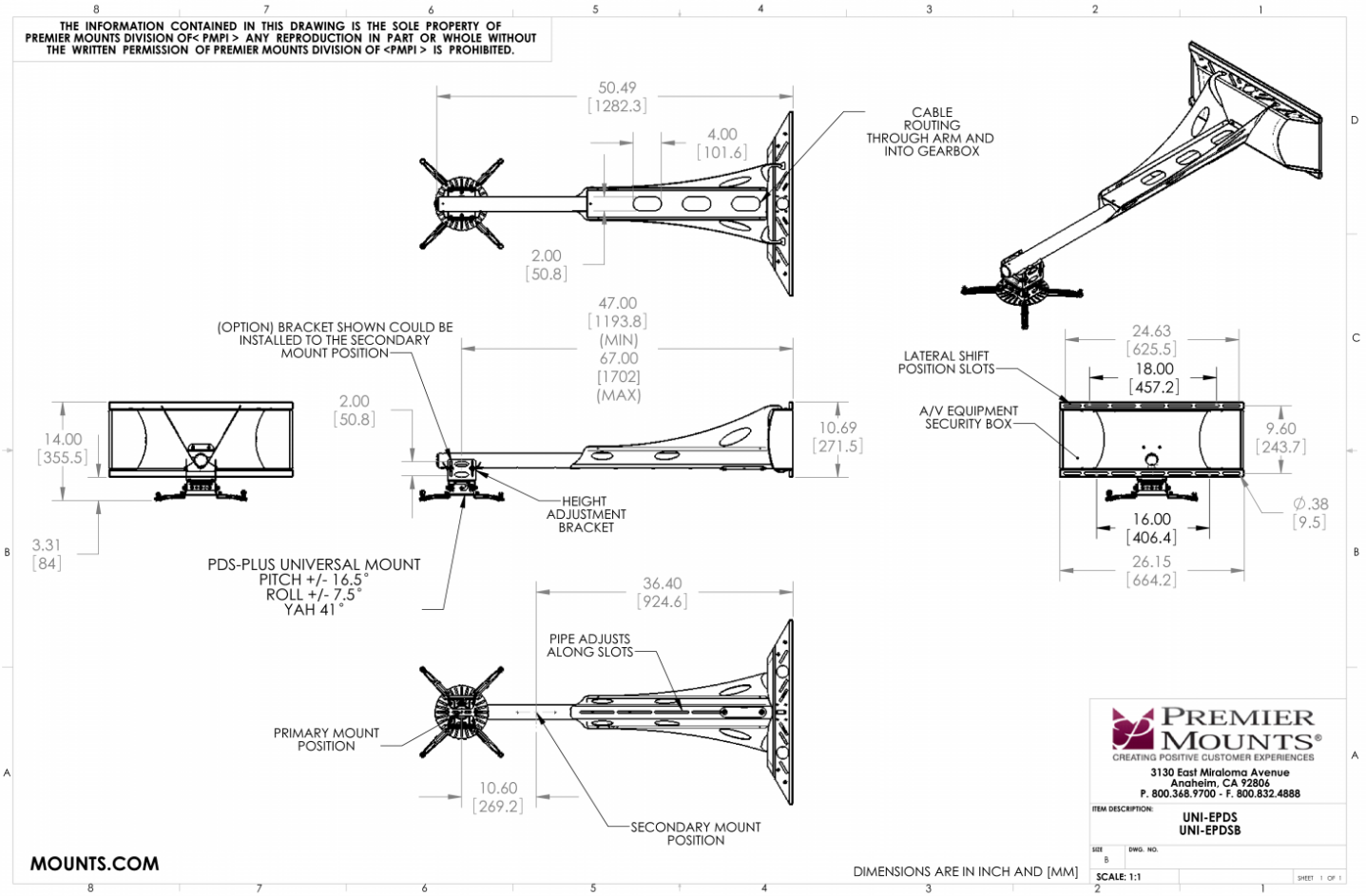
205 Westwood Ave, Long Branch, NJ 07740
Phone: 866-94 BOARDS (26273) / (732)-222-1511
Fax: (732)-222-7088 | E-mail: sales@touchboards.com

UNI-EPDS

Short-Throw Projector Wall Mount with Extension Pole

DOWNLOAD FULL SIZE CAD FILES AND DIMENSIONAL DRAWINGS AT MOUNTS.COM

THE INFORMATION CONTAINED IN THIS DRAWING IS THE SOLE PROPERTY OF PREMIER MOUNTS DIVISION OF <PMPI>. ANY REPRODUCTION IN PART OR WHOLE WITHOUT THE WRITTEN PERMISSION OF PREMIER MOUNTS DIVISION OF <PMPI> IS PROHIBITED.



PREMIER MOUNTS®
CREATING POSITIVE CUSTOMER EXPERIENCES

3130 East Miraloma Avenue
Anaheim, CA 92806
P. 800.368.9700 - F. 800.832.4888

ITEM DESCRIPTION:
**UNI-EPDS
UNI-EPDSB**

SIZE: B
DWG. NO.:
SCALE: 1:1
SHEET: 1 OF 1