

# UNI-PDSB

Wall Mount for Ultra-Short-Throw Projectors

LIST \$429.00	Color: Black
Weight	32.00 lb.   14.5 kg
Weight Cap. per Head	50 lb.   22.7 kg
Depth	7.00 in.   177.8 mm
Mounting Reach	16.43 in.   417.3 mm
Extension	+27.00 in.   685.8 mm
Pitch	+16.50° / -16.50°
Roll	+7.50° / -7.50°
Yaw	+41.00° / -41.00°

Downloads at Mounts.com



[Data Sheet](#)



[Bid Specification Document](#)



50 lb.



+41.00°  
-41.00°



+7.50°  
-7.50°



+16.50°  
-16.50°



7.00 in

## DESCRIPTION

The UNI-PDSB combines the universal PDS-PLUS mount with a universal short-throw projector wall mount. Offering more adjustment options than any other projector arm, the UNI-PDSB extends 7 - 27 in. from the wall or up to 67 in. when used with an optional arm extension. It does not require a stud located in the center of the whiteboard or screen and mounts to dual studs at 16, 18 or 24 in. spacing.

## FEATURES

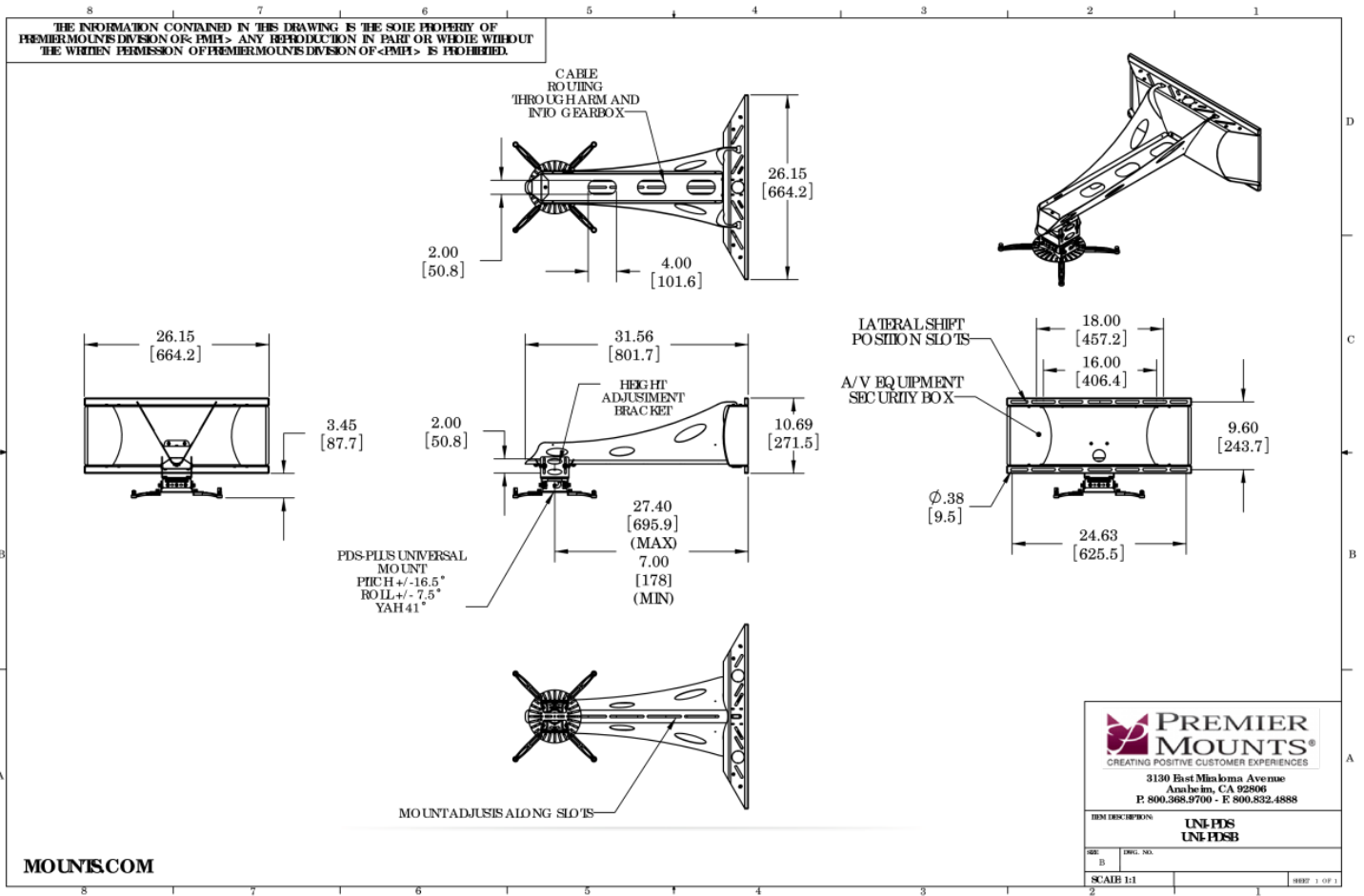
- Extends 7 in. to 27 in from the wall
- Includes patent-pending GearBox™ for amplifier PC, Mac mini™ or control modules
- Optional audio upgrade with UNI-AUDB kit
- Best for classroom and conference rooms where ceiling installations are not possible
- OSHPD and DSA approved (OPA-2440-07)
- PDS-PLUS features slotted mounting base with six interchangeable legs (four long and two short) to reach wider mounting points



# UNI-PDSB

Wall Mount for Ultra-Short-Throw Projectors

DOWNLOAD FULL SIZE CAD FILES AND DIMENSIONAL DRAWINGS AT MOUNTS.COM



# Touchboards

205 Westwood Ave, Long Branch, NJ 07740  
 Phone: 866-94 BOARDS (26273) / (732)-222-1511  
 Fax: (732)-222-7088 | E-mail: sales@touchboards.com