



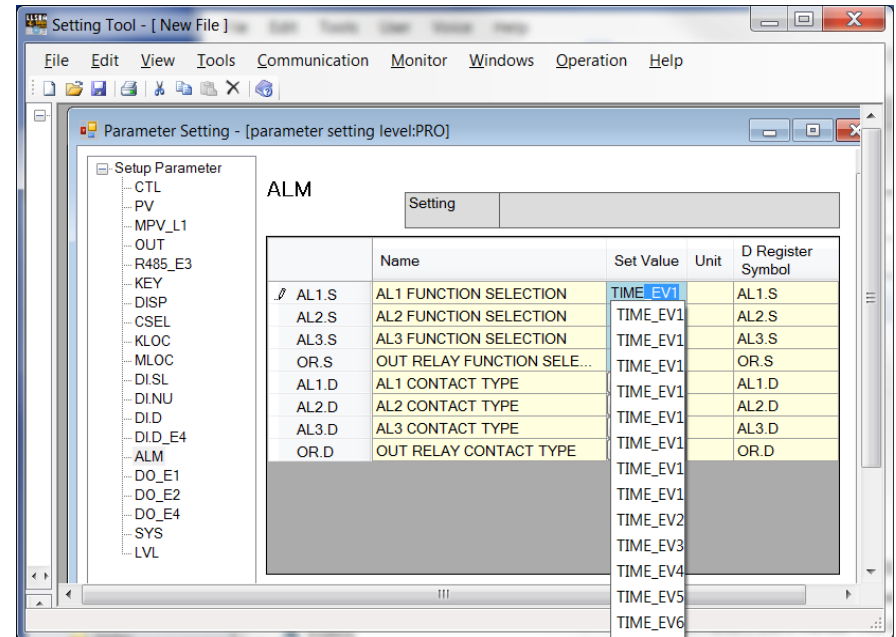
# UP55A/35A – Reassigning Digital Outputs as Time Events

Tech note TN12010

- ❖ This tech note describes how to reassign the digital outputs of the UP55A/35A as time events.
- ❖ By default, the first (2) digital outputs are assigned as process variable events which are based on process conditions.

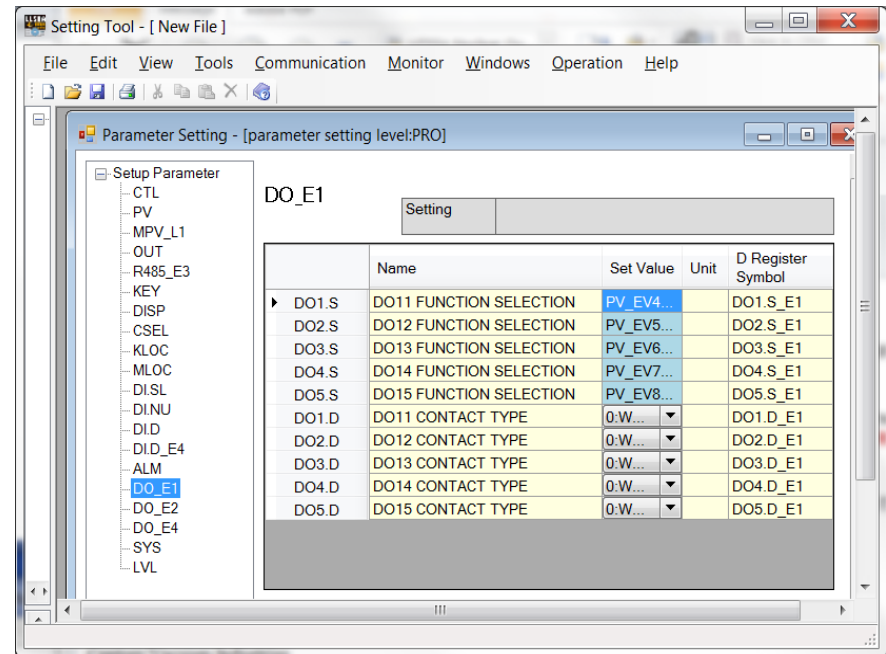
# UP55A/35A DO Reassignment

- Using the LL50A software, go into the Setup parameters.
- Click on the ALM sub-menu. (AL1.S – AL3.S represent DO1 – DO3)
- Next, click on the Set Value for the DO to be changed.
- Now type TIME and you will see the drop-down box appear for the different Time events.



# UP55A/35A DO Reassignment

- ❖ Choose the desired event
- ❖ Remaining DO's are set in the DO\_E1 (DO11-15), DO\_E2 (DO21-25) and DO\_E4 (DO41&42) sub-menus. They are configured the same way.
- ❖ Save the configuration and download the file to the controller.



An aerial photograph of a vast green landscape under a bright blue sky with scattered white clouds. The sun is low on the horizon, creating a lens flare effect. A large, stylized yellow arrow with a black outline curves across the bottom of the image, pointing towards the right.

# Thank you!