



UTAdvanced

Changing the Decimal Point Position of TC or RTD Inputs

Tech note TN12014

- ❖ This tech note describes how to change the decimal point position on the UTAdvanced line of controllers.
- ❖ Sometimes it is desirable to reduce or increase the precision of the Process Variable (PV) display.



Making the Change Using the Keypad

1. Hold the ◀ & PARAMETER keys for (3) seconds. SEt.MCTL is displayed.
2. Press the ▶ key twice. SEt.MMPV is displayed.
3. Press the SET/ENTER key once. P.UNI is displayed.
4. Press the ▼ key once and you will see P.dP displayed.

❖ Making the Change Using the Keypad cont.

5. Press the SET/ENTER key once and using the ▲/▼ keys and change the value to the number of digits needed to the right of the decimal point.
6. Press the SET/ENTER key once to save the value.
7. Press the ▼ key once and you will see P.RH displayed.
8. Press the SET/ENTER key once and using the ◀/▶ keys (to move to the different numbers) and ▲/▼ keys (to change the value) to set the high range value of your input.

❖ Making the Change Using the Keypad cont.

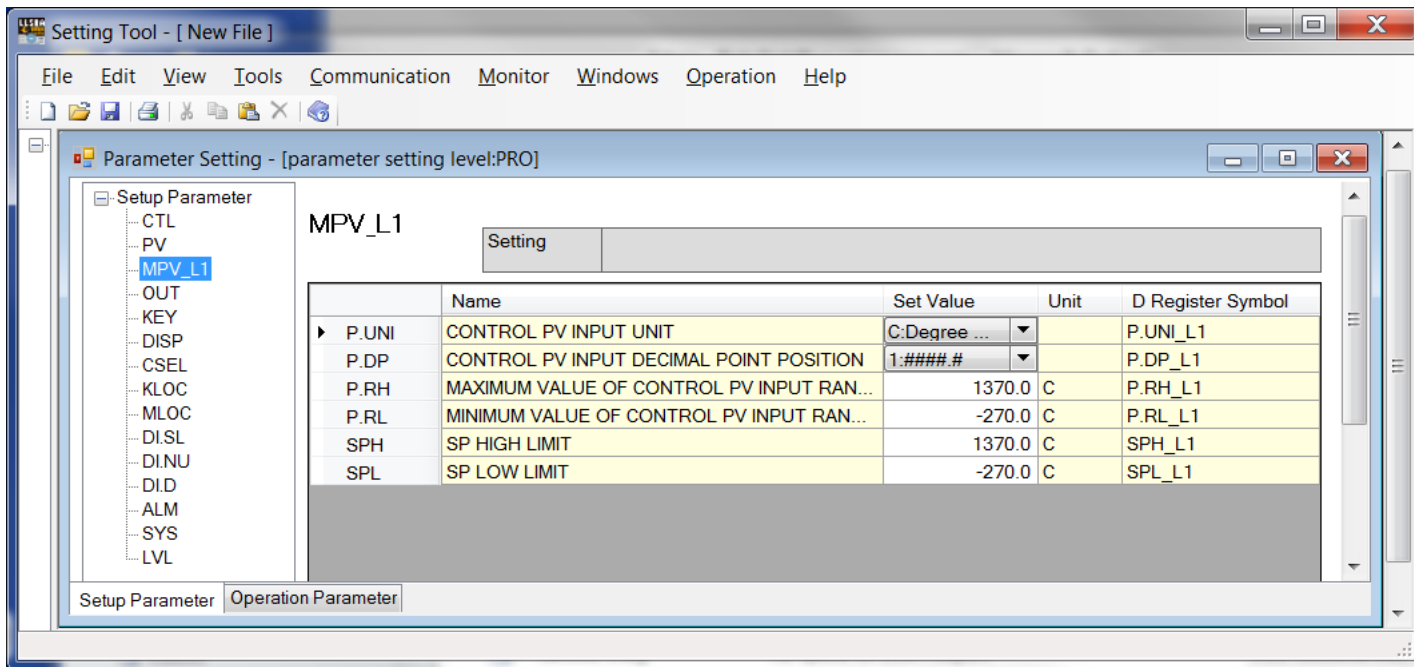
9. Press the SET/ENTER key once to save the value.
10. Press the ▼ key once and you will see P.RL displayed.
11. Press the SET/ENTER key once and using the ◀/▶ keys (to move to the different numbers) and ▲/▼ keys (to change the value) to set the low range value of your input.

❖ Making the Change Using the Keypad cont.

12. Press the SET/ENTER key once to save the value.
13. Press the DISPLAY key to get out of setup.

❖ Making the Change Using the LL50A Software

- ❖ Enter the Setup Parameters and then go to the MPV_L1 submenu. Here you will find the P.DP, P.RH and P.RL parameters.





Thank you!