



21 Industrial Ave Upper Saddle River, NJ. 07458

P(201) 962-7373 F(201) 962-8353

E-mail: info@phase2plus.com

# Ultrasonic Thickness Gauge w/ A & B Scan

Model No. UTG-4000



# CONTENT

## 1. GENERAL INTRODUCTION 3

1.1 CONSTRUCTION OF THE GAGE ..... 3

1.2 STANDARD CONFIGURATIONS ..... 3

1.3 OPTIONAL CONFIGURATIONS ..... 3

1.4 SPECIFICATIONS ..... 4

1.5 MAIN FUCTIONS ..... 5

## 2. KEYBOARD FUCTIONS 5

## 3. MEASURING THE THICKNESS 6

3.1 PRESET THE MATERIAL'S VELOCITY 6

3.2 PRESET OTHER SPECIFICATIONS .... 7

3.3 CALIBRATION ..... 7

3.4 DISPLAY MODES ..... 9

3.5 ADJUSTING THE SPECIFICATIONS IN A-SCAN MODE

..... 13

3.6 REAL CASES ANALYSIS..... 13

## 4.CARE AND MAINTENANCES 17

4.1 POWER SOURCE INSPECTION ..... 18

4.2..... Maintenance

4.3 Service / Support ..... 18

APPENDIX: SOUND VELOCITIES OF COMMON MATERIALS 18

# 1. GENERAL INTRODUCTION

Utilizing live A-scan and time-based B-scan for absolute correctness, this new state of the art thickness gauge is packed with useful features allowing users to be confident of the displayed values on the most critical of applications. This multi-functional unit offers everything from basic measurement, Scan with Min/Max viewing, GO/NO GO display and Adjustable Sound Velocity. This dynamic sonic gauge is designed to measure the thickness of metallic and non-metallic materials in critical situations that ordinary thickness gauges couldn't do.

*The UTG-4000 will accurately display readings in either inch or millimeter after a simple calibration to a known thickness or sound velocity.*

## **IMPORTANT!**

The UTG-4000 is a multi-functional thickness gauge that allows the user tremendous control over the functionality and performance of this instrument. Although this provides the user with control and versatility for numerous applications, it also requires that the user be familiar with the function, operation and waveform interpretation of the instrument as well.

It is recommended that the user spend a sufficient amount of time working with this instrument prior to field use.

Responsibility for proper use rests solely with the user of this instrument.

## 1.1 CONSTRUCTION OF THE GAGE

## 1.2 STANDARD CONFIGURATION

Item	Qty
Thickness Gauge	1
5MHz PROBE	1
AA Batteries	2
2oz Couplant Gel	1
Rugged Carry case	1
Operation Manual	1

## 1.3 OPTIONAL ACCESSORIES

High-temperature probe	Cast iron probe
Small Probe (6mm)	Mini Probe(4mm)
Probe cable	5-Step block

## 1.4 SPECIFICATIONS

<b>Operating Principle</b>	Ultrasonic Pulse/Echo and Echo to Echo method with dual element probe
<b>Display type</b>	2.4" Color Screen
<b>Resolution</b>	0.001", .01" /0.01mm (Inch/Metric selectable)
<b>Measuring Range</b>	0.02-20.0" <i>Dependant upon probe &amp; material</i>
<b>Repeatability</b>	+/- .001" (+/-0.05mm)
<b>Sound velocity range</b>	0.0197-0.3937in/us (500-9999m/s)
<b>Measuring Error:</b>	0.001" (up to 0.393" steel) +/- 0.5%H + 0.0003"(over 0.393" steel) H=actual value
<b>Display Modes:</b>	Digital Thickness Readout A-scan or B-scan Min/Max Capture Diff-Value / Reduction
<b>V-Path Correction</b>	Automatic
<b>Update Rate</b>	Selectable: 4Hz, 8Hz, 16Hz
<b>Refresh rate</b>	4/second
<b>Alarm Settings</b>	Min/Max Alarm Dynamic waveform color change on alarm
<b>Operating temperature</b>	14-122°F (-10°C - +50°C)
<b>Auto Shut-Off</b>	After 5 minutes
<b>Power supply</b>	3v AA alkaline batteries (2pc)
<b>Operating Time</b>	Approx. 36 hours
<b>Dimensions</b>	6.02" x 2.99" x 1.45" (153 x 76 x 37mm)
<b>Weight</b>	9.9oz (280g)

## 1.5 MAIN FUCTIONS


1. User-friendly interface
2. Optional Live A-scan waveform display
3. Time based B-scan function displays cross section of test piece
4. Different coupling status showing in different colors
5. Thickness alarm: automatic alarm when the result exceeds the preset thickness range
6. Limits value mode: Displays the minimum and maximum values when measuring
7. Difference mode: getting the difference between the actual value and the normal value as well as the percentage
8. Inch / Metric Conversion
9. Extra large memory: up to 100,000 values & 1000 waveforms
10. Selectable Resolution: 0.001", 0.01" or .01mm
11. Optional rectification mode: RF, full wave, half +, half -
12. Optional waveform: outline mode or filled mode
13. Approx. battery Life: 35 hours

## 2. KEYBOARD FUCTIONS

The keyboard for the UTG-4000 consists of 3 virtual function keys(**P1, P2, P3**), four direction keys and two specialized function keys (**Mode and CAL/ON**).

See the following illustration (2.1)

CONFIGURATION	
VIEW MODE	NORMAL
PROBE SETUP	PT-08
MINIMUM ALARM	0.15
MAXIMUM ALARM	254.000
NOM.THICKNESS	12.17
SELECT	



P1, P2, P3 operate the function shown on the display just above each respective button.

PUT PROBE ON ZERO		
BLOCK		
USE COUPLANT		
VEL	ABORT	

Testing block for calibration

"Mode" key opens up the main interface allowing you to choose a configuration or return to the main testing screen. The 4-direction keys allow you to toggle through the interface

2.1 KEYBOARD FUCTION ILLUSTRATION

# 3. MEASURING THICKNESS

## 3.1 Sound Velocity Calibration

In order for the gauge to make accurate measurements, it must be set to the correct sound velocity for the material being measured. Different types of material have different inherent sound velocities. If the gauge is not set to the correct sound velocity, all of the measurements the gauge makes will be erroneous by some fixed percentage. The **One-Point** calibration is the simplest and most commonly used calibration procedure optimizing linearity over large ranges. The **Two-point** calibration allows for greater accuracy over small ranges by calculating the probe zero and velocity.

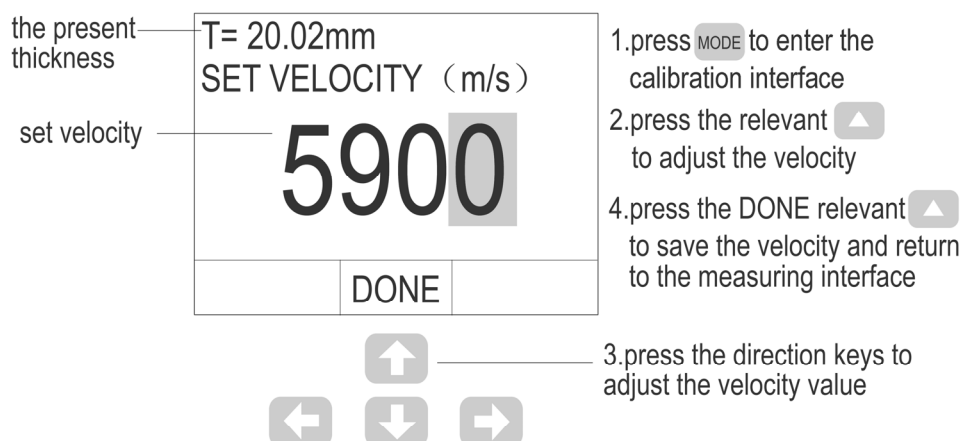
**Note: One** and **Two** point calibrations must be performed on material with the paint or coating removed. Failure to remove the paint or coating prior to calibration will result in a multi material velocity calculation that may be different from the actual material velocity intended to be measured.

### Calibration to a known thickness

Note: This procedure requires a sample piece of the specific material to be measured with a known thickness value. This part should be measured with a caliper or micrometer.

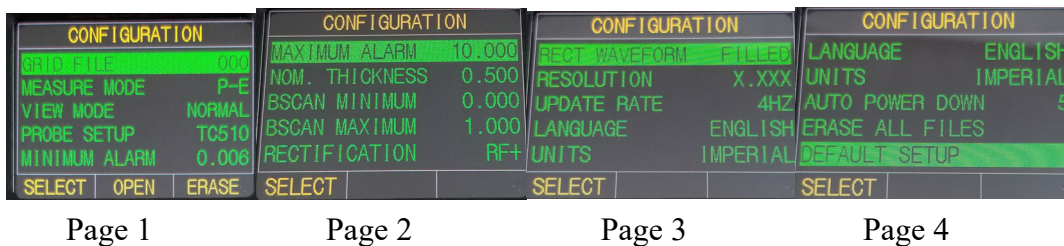
- 1) Perform a test on the built-in test block to verify unit is functioning properly
- 2) Apply couplant to your sample piece.
- 3) Press the transducer against your sample piece, making sure that the transducer sits flat against the surface of the sample. The display should show a “white colored” thickness value.
- 4) Having achieved a stable reading, remove the transducer. If the displayed thickness changes from the value shown while the transducer was coupled, repeat step 3.
- 5) Press the CAL button to enter Calibration mode. On the bottom left corner of the display it will show VEL. Press the virtual P1 button to enter velocity setting.
- 6) Press the transducer against the sample piece, making sure that the transducer sits flat against the surface of the sample. The display should show some thickness value in the Top Left Corner as T= X.XXX.
- 7) While holding the probe on your sample, use the 4-Arrow buttons to change the velocity value until you see the T= the actual thickness of your part.
- 8) Press P2(Done) button to save the setting.
- 9) You can now begin testing your application(s) of this same material.

### 3.2. Adjust the velocity directly if the material velocity is known. See illustration below.



## 3.2 PRESET OTHER SPECIFICATIONS

Press “**Mode**” to enter the user interface, which allows you to select and adjust options like GRID FILE, MEASURE MODE, VIEW MODE, PROBE SETUP, MINIMUM ALARM, MAXIMUM ALARM, NOM.THICKNESS, B-SCAN MIN, B-SCAN MAX, RECTIFICATION, RECT WAVEFORM, RESOLUTION, LANGUAGE, UNITS, AUTO POWER DOWN, ERASE ALL FILES, DEFAULT SETUP. See the following figure:



## 3.2 Menu Selections

**GRID FILE** – Select stored files. Total 400 files and each file could save 252 thickness values or waveforms.

**MEASURE MODE** – Pulse-Echo mode and Echo-Echo mode. Pulse-echo mode used for standard measurement; Echo-echo mode used for through coating function.

**VIEW MODE:** **NORMAL** (display shows thickness values), **MIN+MAX**(display shows thickness along with Min and Max values) **DIFF/RR%** mode (displays the currently measured and a nominal thickness input by user, the difference between the currently measured thickness and the nominal thickness and the ratio between the difference and the nominal thickness).

**PROBE SETUP:** **TC510** (OEM probe for thru-coating), **NULL** (allows use of unknown probe) **PT-04**(4mm probe), **PT-06**(6mm probe), **PT-08**(8mm probe), **ZT-12**(Rough surface probe), **GT-12** (Hi-Temp probe).

**MINIMUM ALARM:** Set the minimum thickness alarm value, range of 0.15-635mm. The result will be displayed in red if the actual thickness is below than the minimum value preset.

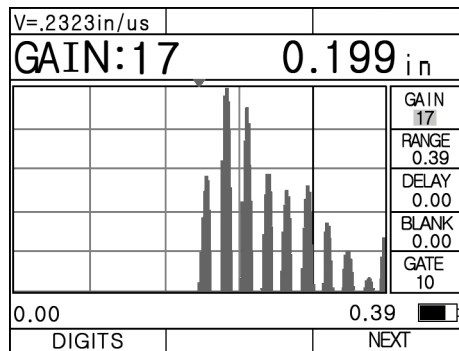
**MAXIMUM ALARM:** Set the maximum thickness alarm value, range of 0.15-635mm. The result will be displayed in red if the actual thickness is above the maximum value preset.

**NOMINAL THICKNESS:** Set the nominal thickness, range of 0.15-635mm. The real application will be introduced in the DIFFERENTIAL MODE.

**B SCAN MINIMUM:** Set the minimum thickness of the B scan.

**B SCAN MAXIMUM:** Set the maximum thickness of the B scan.

**RECTIFICATION MODE:** RF+, full wave, half -, half +, RF-. **RF** describes the complete echo waveform; **full wave** indicates the half + echo and the overturned half - echo; half - means putting off the half + echo and turn the half - over to +; half + means putting off the half - echo and only left the half + echo. RF- indicates the phase waveform of RF+.



3.1 HALF-WAVE POSITIVE

**RECTIFICATION WAVEFORM:** outline mode and filled mode.

**RESOLUTION:** Set the decimal digits of the measurement result. Metric of X.X and X.X X and imperial of X.XX and X.XX X.

**UPDATE RATE:** Update the rate of measurement result. Optional 4Hz, 8 Hz and 16Hz.

**LANGUAGE:** Set the interface language: Chinese, English, French, German and Japanese.

**UNITS:** Selectable units of mm/inch.

**AUTO POWER DOWN:** The device will be automatically power off if instrument is idle for set 5 minutes, 10 minutes or 20 minutes. If set to OFF, the instrument is only powered off when press and hold power button.

**DELETE ALL FILES** – Empty the thickness readings and waveforms of all files.

**DEFAULT SET UP** – Set all parameters to the original factory default values.

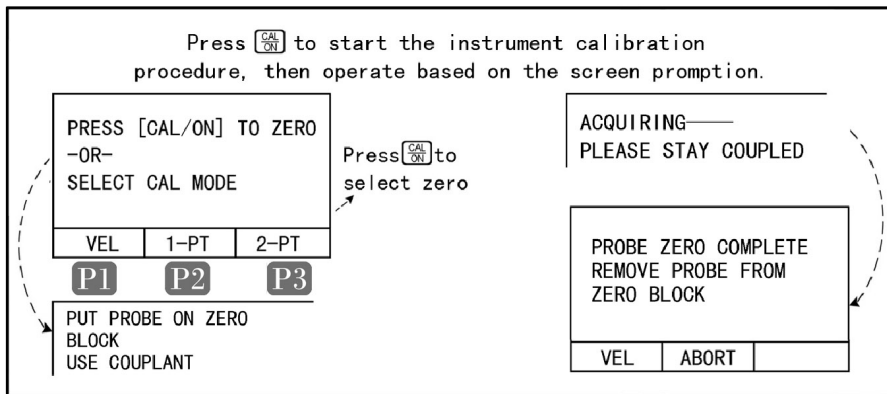


### 3.1 INSTRUMENT CALIBRATION

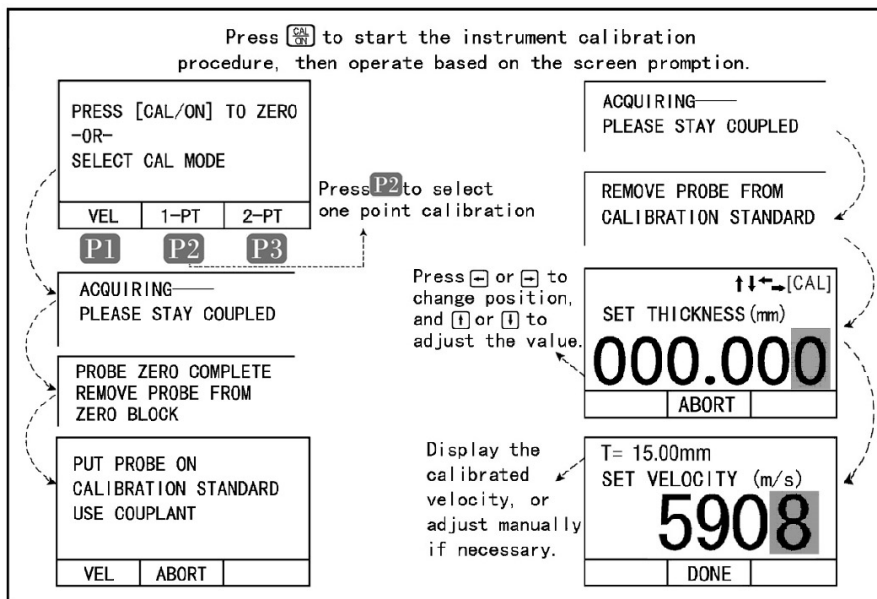
Before using UTG-4000, the instrument/probe should be calibrated to a known thickness or sound velocity.

- One point calibration:** This allows you to calibrate the gauge to a specific material using a known thickness value. The **One-Point** calibration is the simplest and most commonly used calibration procedure optimizing linearity over large ranges
  - Two point calibration:** This allows you to calibrate from two known thickness of the same material (ie: Step Block). The **Two-point** calibration allows for greater accuracy over small ranges by calculating the probe zero and velocity.
- Note:** **One** and **Two** point calibrations must be performed on material with the paint or coating removed. Failure to remove the paint or coating prior to calibration will result in a multi material velocity calculation that may be different from the actual material velocity intended to be measured.
- Dual Echo calibration:** Calibrate the velocity from the test block of known thickness.
  - Setting the velocity manually:** If the material velocity is known, for example the velocity of steel is 5900m/s. The sound velocity can be set manually.

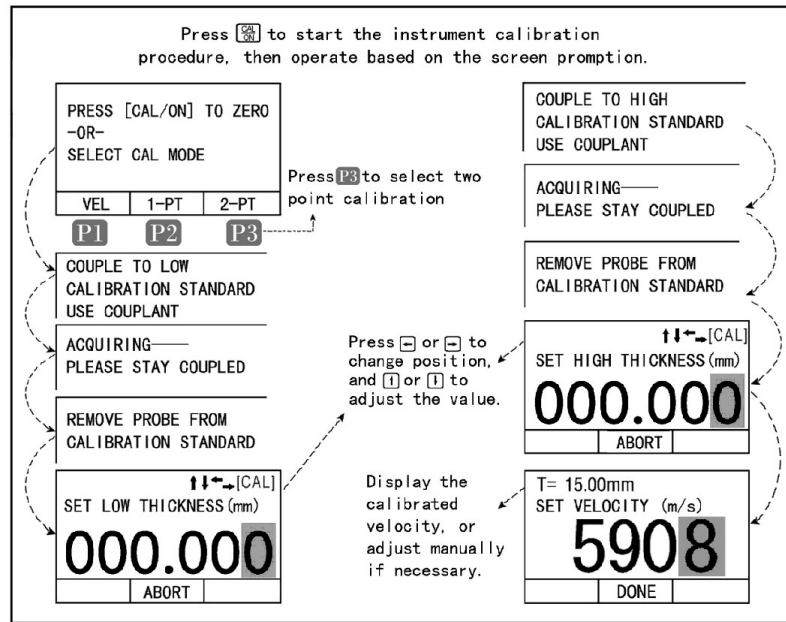
#### 3.1.1 Probe Zero Procedure



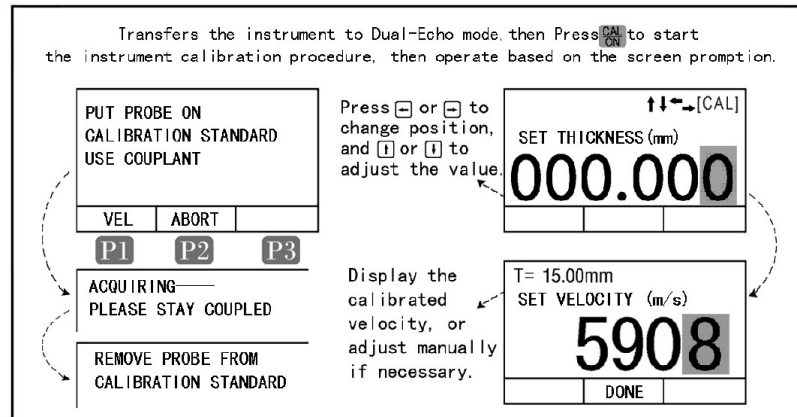
#### 3.1.2 One Point Calibration



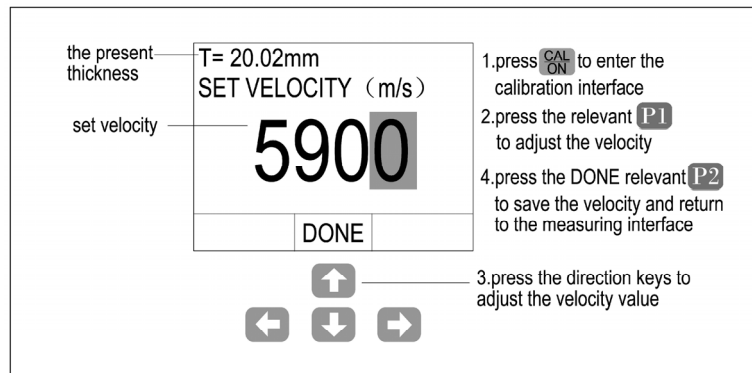
### 3.1.3 Two Point Calibrations



### 3.1.4 Dual Echo Calibration



### 3.1.5 Velocity Adjusting Steps



**Attention 1:** Measure the standard block before the calibration, to ensure that the current setting of instrument parameters can measure the standard test block correctly.

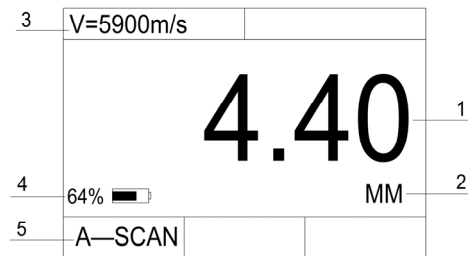
**Attention 2:** probe zero procedure, one point calibration and two point calibrations are suitable for single echo mode, dual echo calibration is suitable for dual echo mode.

### 3.4 DISPLAY MODES

There are three measuring interface display modes: NORMAL mode, A-scan mode and B-scan mode. And there are three display modes within the “Normal” mode. The thickness value mode, Difference/rate of reduction measurement mode, MAX/MIN measurement mode. Select this in “VIEW MODE” of configuration.

**ATTENTION:** When the probe is properly “coupled” to the surface of the object being tested, the value on the display will be shown in WHITE. If not coupled properly then the values will be shown in GREEN. When the values exceed the upper or lower limit setting then the values will be shown in RED.

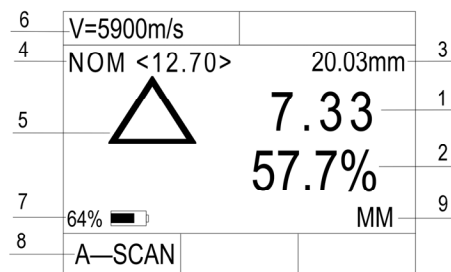
**THICKNESS VALUE MODE(Normal):** This interface shows the velocity of material, the present thickness value and unit.



3.4 NORMAL MODE INTERFACE

1—the present thickness value    2—unit    3—material velocity    4—battery power    5—A-scan interface

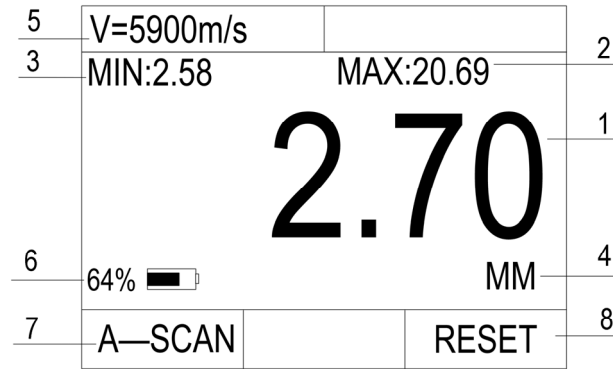
**DIFFERENCE/RATE-OF-REDUCTION MODE (DIFF/RR%):** This interface shows the measured value, the preset nominal thickness value, the difference between the measured value and the preset value and the ratio between the difference and the normal value. Before using this mode, presetting the nominal thickness is needed.



3.5 DIFFERENCE MODE INTERFACE

1—the difference between the normal value and the preset value    2—the ratio between the difference and the nominal value    3—the present thickness value    4—the normal value  
 5—difference signal    6—material velocity    7—battery power    8—A—scan interface

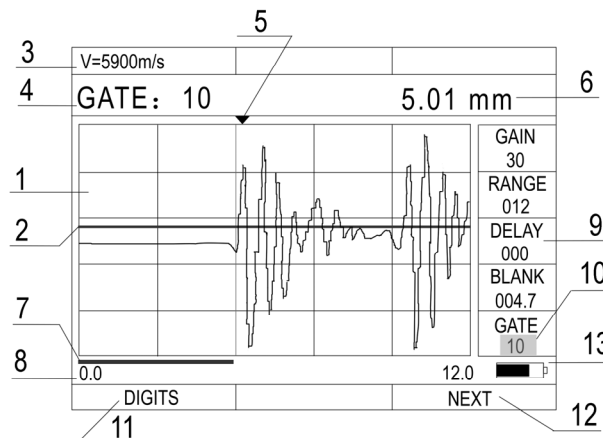
**LIMITS VALUE SCANNING MODE (MIN+MAX):** this mode allows the customer to test the thickness of material continuously and to show the upper/lower limits after the tests. It shows the minimum and maximum values during the tests as well as the present thickness. Press the RESET button to get the limits when measuring the thickness.



3.6 LIMITS VALUE MODE INTERFACE

- 1—the present thickness value    2—the maximum value    3—the minimum value    4—unit  
 5—material velocity    6—battery power    7—A—scan interface    8—reset

**A-scan mode:** This interface allows you to see the present thickness value and the A-scan waveform at the same time. The right side of the interface is the specification adjusting area, which can be adjusted for a more precise result. The detailed instructions can be seen in chapter 3.5.



3.7 A-SCAN MODE INTERFACE

- 1—waveform display area    2—gate    3—material velocity    4—the present highlighted specification    5—measuring point( the first point of intersection between the waveform and the gate)  
 6—the present thickness value    7—the blank confines  
 8—the range confines    9—the specification adjusting area    10—highlighted signal  
 11—digit mode    12—specification switch    13—battery power

**ATTENTION:** When the probe and the object are not completely coupled, the letters in the various interfaces are shown in GREEN, when properly coupled, they are displayed in WHITE color and when the either the upper or lower limits are exceeded, the letters will be displayed in RED color.

### 3.5 ADJUSTING THE SPECIFICATIONS IN A-SCAN INTERFACE

In the A-scan interface, press the P3 button to highlight the value to be adjusted. Then press the direction keys to adjust the values. Up and down keys are used for small increments, while left and right for larger increments.

**GAIN**—adjust the sensitivity of the gage with unit dB. The larger the gain is, the higher the sensitivity is. The gain ranges from 8 to 55dB.

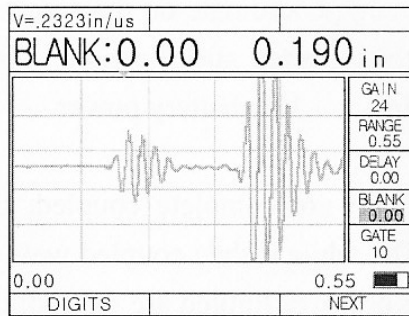
**Helpful Hints:** When testing flat parts, the gain should be low. Aluminum and cast aluminum should also use low gain. Steel/Stainless Steel should be in the middle. Cast iron pipe should use maximum gain.

When in Echo-Echo mode, the red arrow on the screen should point to the first wave. The blue arrow should point to the second wave. This tells you that you have the GAIN set correctly. In STD mode only the red arrow will show.

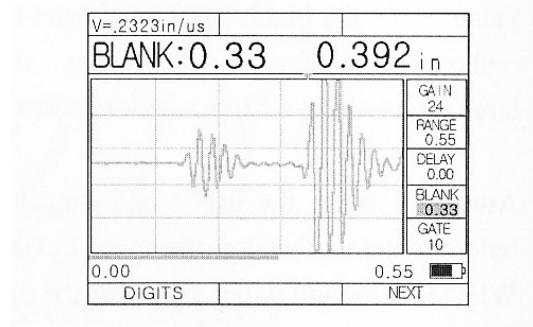
**RANGE**—adjust the testing range that the screen displays. The range is 0.393” to 5.70” (10~145mm).

**DELAY**—shown at the beginning point of the screen. The waveform will move horizontally when adjusting this value.

**BLANK**—hide the unnecessary and useless clutter in front of the main waves. The red line on the bottom of the screen shows the blank confines. The adjusting blank confines are the present range confines. Incorrect readings can be caused by material issues such as corrosion, internal material defects or even a specific material such as aluminum. Only adjustments in the Gain can solve part of the problem.



3.9. The waveform without blanking

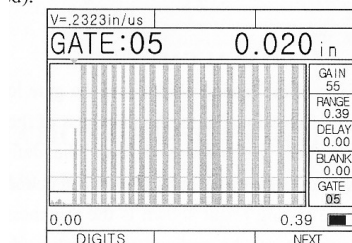


3.10 Omits the front noise by blanking

**GATE**—lock the echo and show the thickness value of the highest echo. Adjusting the height of the gate. The gate ranges from 1 to 50mm. Only when the waveform is higher than the gate will this gauge be able to take the echo and show the value.

**Attention:** this will only show when the GATE specification is highlighted.

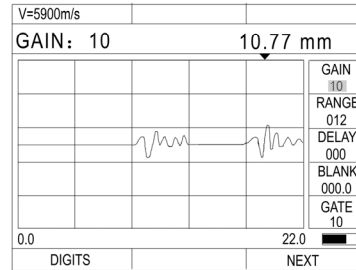
The first intersection point between the waveform and gate is shown with a RED arrow which will help you determine if this thickness value is correct. If correctly tested, the red arrow should point to the front of the first bottom echo.



3.11 waveform of the 0.02in sheet by PT04

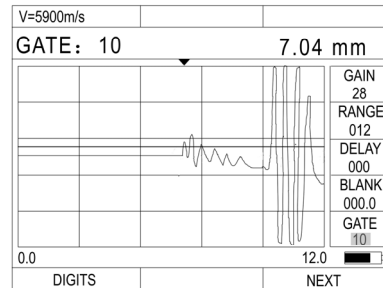
### 3.6 REAL CASE ANALYSIS

1. When measuring the thickness, it's possible that small gains prevent precise results. As shown in the following figure, the thickness of the testing object is about 5mm, but as for the over small gain, the measuring result is 10.77mm as the first echo has not broken the gate and the gate locates the second echo automatically. This is obviously an incorrect result, and customer can pull up the echo by enhancing the gain setting to make the first echo break the gate and finally pinpoint the correct measurement.



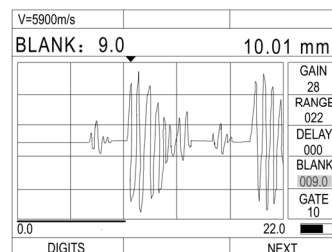
3.8 REAL CASE 1

2. There are some defects in the testing object, and the gate locks the defect echoes. As shown in the following figure, the thickness of the testing object is about 10mm, but as there are obvious defects (the defect echoes are shown on the display) and the gate locks the defect echoes which have broken the gate, thus, the testing result shown is the thickness of the defect area. The right measurement can be realized by adjusting the gate setting above the defect echoes.



3.9 REAL CASE 2

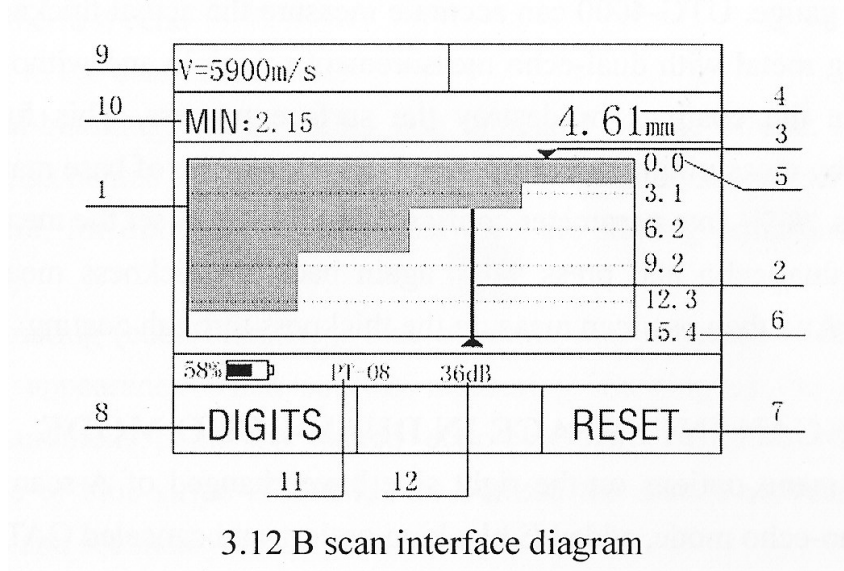
3. If there are some surface faults in the testing object and the gate locks the defect echoes, the measuring result will be the thickness of the defect area. In this condition, the customer can use the BLANK function to get the correct testing result. As shown in the following figure, the line on the bottom of the screen, which we use to shield the defect echoes, indicates the blank confines and makes the gate not catch the echoes within the blank confines, thus, the right thickness value is acquired.



3.10 REAL CASE 3

### 3.7 OPERATION OF B-SCAN INTERFACE

### 3.7.1 B-Scan Display



3.12 B scan interface diagram

- 1) B-scan image display
- 2) White pointer
- 3) Red triangle(displays min thickness)
- 4) The thickness value of the pointer position
- 5) The minimum thickness range in B-scan
- 6) The maximum thickness value in B-scan
- 7) Erasing the current B-0scan images and measurements
- 8) Enter the numerical measurement interface
- 9) Sound velocity
- 10)The minimum thickness value on the B-scan image
- 11)Parameter display area
- 12)Gain value

### 3.7.2 Introduction to B-scan

The UTG-4000 has a time base B-scan function. By moving the probe across the surface of the workpiece you can obtain a cross sectional profile of your part. This allows for viewing the contour of your part.

When you remove the probe from the workpiece, the gauge can obtain the minimum value of the B scan image and indicate that position with a RED arrow. You can see any point thickness value of the B scan image by moving the pointer to any position. The minimum thickness of the picture is shown in the top left corner as "MINIMUM". The Red arrow is the position of the minimum thickness while in B-scan.

### 3.8 DUAL-ECHO (THRU-COATING) MODE

The UTG-4000 can accurately measure the actual material below the coating utilizing the dual echo measurement principle. This feature allows you to measure the material without having to destroy or remove the protective coating of a surface.

Press “M” to go into the parameter interface and set Measurement mode to DUAL-ECHO and press “M” to return to the main measurement screen.

#### 3.8.1 A-Scan interface in dual-echo mode

The UTG-4000 allows you to use A-scan while in the dual-echo mode. This feature has added E-blanking option as well as the option to cancel GATE. When measuring, the blue strip area indicates the length of echo blanking./ the waveform above this is considered invalid.

See fig 3.16 below:

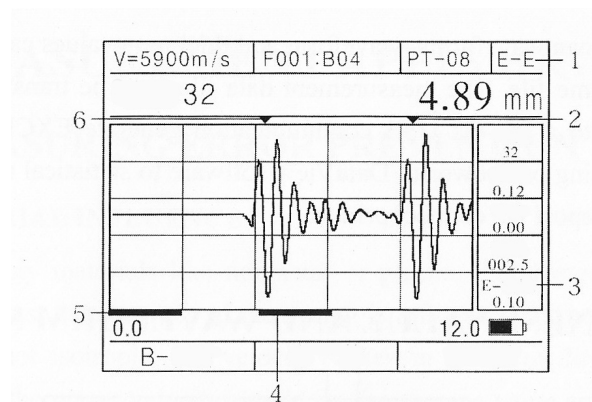


Figure 3.16 A-scan interface in dual-echo mode

- 1) Identification of dual-echo mode
- 2) Blue arrow indicates secondary echo
- 3) E-blanking
- 4) Blue line: the length of echo-blanking
- 5) Red line: length of initial blanking
- 6) Red arrow: indicates first echo

#### Blanking in Dual-Echo Mode:

- a) **Initial blanking:** The red blanking line starts at zero. The waveform within the scope of the red strip is considered invalid due to lack of clutter between the starting point and the first echo.
- b) **E-Blanking(echo blanking):** the blue line indicated on the screen appears when a measurement has been successfully taken. This line starts at the first echo measurement point. A waveform within the scope of the blue stripe is also considered invalid due to lack of clutter between the first echo and secondary echo.



## 4. DATA STORAGE FUNCTIONS

The UTG-4000 utilizes a micro grid format allowing this unit to store up to 100,000 thickness values and 1,000 A/B scan waveforms. 000-400 files, 21 rows and 12 columns. **See Fig 3.17 below**

Thickness values and waveforms can be mixed and stored in the same file. The stored data can be transferred to your PC via USB output and saved as an EXCEL or TXT file.

### 4.1 THICKNESS VALUE AND WAVEFORM STORAGE

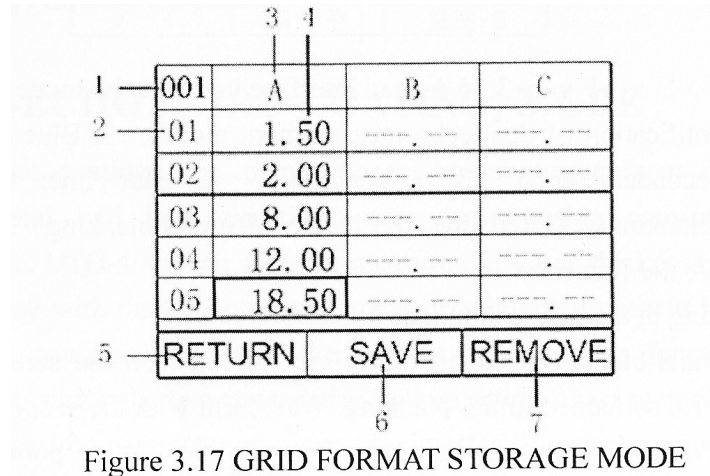


Figure 3.17 GRID FORMAT STORAGE MODE

- 1) Storage file number
- 2) Line mark
- 3) Row mark
- 4) Data in memory
- 5) Return to main menu
- 6) Save current value or waveform
- 7) Delete the selected data

### 4.2 Browsing stored data

#### Viewing Individual Files:

Press "MODE" to enter the configuration display. Highlight "GRID FILE" and press the P1 button to view the file numbers. Use the up and down arrows to choose the file number you want to recall. Press the P2 button to confirm and view the individual file.

#### Viewing All Files in a specific group:

Press "MODE" to enter the configuration display. Highlight "GRID FILE" and press the P2 button to view the all files within that group number that is highlighted. Use the up and down arrows to choose the file number within that group that you want to recall.

## 5. CARE AND MAINTENANCE

## **5.1 POWER SOURCE INSPECTION**

During the usage of the gage, the current battery power will be shown on the display. When the battery capacity is low, the customer should change the batteries promptly so that the measuring accuracy won't be influenced. The steps of changing batteries are as follow:

1. Turn off the gage.
2. Loosen the screws on the back of the unit and remove the battery cover.
3. Take out the batteries and replace with new ones. Pay careful attention to polarity.

**Attention:** when not using the gauge for extended periods of time, please remove batteries to prevent any leakage or corrosion.

## **5.2 Maintenance:**

1. Always keep your gauge, probe, cable clean of any dirt, dust, fluids, etc to prevent early wear of these parts.
2. Be sure to avoid any caustic liquid such as alcohol or viscous fluids to prevent corrosion to the cover and the display window. Clean with water only.
3. Avoid scratching the surface of the probe. A worn probe will cause unstable readings.

## **5.3 Service/Support**

Contact Phase II for all technical support and/or service.

To send your unit in for any type of service, please call for a RMA#.

**(201) 962-7373**

## **Applications Notes:**

## Measuring pipe and tubing.

When measuring a piece of pipe to determine the thickness of the pipe wall, orientation of the transducers is important. If the diameter of the pipe is larger than approximately 4 inches, measurements should be made with the transducer oriented so that the gap in the wearface is perpendicular (at right angle) to the long axis of the pipe. For smaller pipe diameters, two measurements should be performed, one with the wearface gap perpendicular, another with the gap parallel to the long axis of the pipe. The smaller of the two displayed values should then be taken as the thickness at that point.



Perpendicular

Parallel

## Measuring hot surfaces

The velocity of sound through a substance is dependant upon its temperature. As materials heat up, the velocity of sound through them decreases. In most applications with surface temperatures less than about 100°C, no special procedures must be observed. At temperatures above this point, the change in sound velocity of the material being measured starts to have a noticeable effect upon ultrasonic measurement. At such elevated temperatures, it is recommended that the user perform a calibration procedure on a sample piece of known thickness, which is at or near the temperature of the material to be measured. This will allow the gauge to correctly calculate the velocity of sound through the hot material.

When performing measurements on hot surfaces, it may also be necessary to use a specially constructed high-temperature transducer. These transducers are built using materials which can withstand high temperatures. Even so, it is recommended that the probe be left in contact with the surface for as short a time as needed to acquire a stable measurement. While the transducer is in contact with a hot surface, it will begin to heat up, and through thermal expansion and other effects, may begin to adversely affect the accuracy of measurements.

## Measuring laminated materials.

Laminated materials are unique in that their density (and therefore sound-velocity) may vary considerably from one piece to another. Some laminated materials may even exhibit noticeable changes in sound-velocity across a single surface. The only way to reliably measure such materials is by performing a calibration procedure on a sample piece of known thickness. Ideally, this sample material should be a part of the same piece being measured, or at least from the same lamination batch. By calibrating to each test piece individually, the effects of variation of sound-velocity will be minimized.

An additional important consideration when measuring laminates, is that any included air gaps or pockets will cause an early reflection of the ultrasound beam. This effect will be noticed as a sudden

decrease in thickness in an otherwise regular surface. While this may impede accurate measurement of total material thickness, it does provide the user with positive indication of air gaps in the laminate.

## **Suitability of materials**

Ultrasonic thickness measurements rely on passing a sound wave through the material being measured. Not all materials are good at transmitting sound. Ultrasonic thickness measurement is practical in a wide variety of materials including metals, plastics, and glass. Materials that are difficult include some cast materials, concrete, wood, fiberglass, and some rubber.

## **Couplants**

All ultrasonic applications require some medium to couple the sound from the transducer to the test piece. Typically a high viscosity liquid is used as the medium. The sound used in ultrasonic thickness measurement does not travel through air efficiently.

A wide variety of couplant materials may be used in ultrasonic gauging. Propylene glycol is suitable for most applications. In difficult applications where maximum transfer of sound energy is required, glycerin is recommended. However, on some metals glycerin can promote corrosion by means of water absorption and thus may be undesirable.

Other suitable couplants for measurements at normal temperatures may include water, various oils and greases, gels, and silicone fluids. Measurements at elevated temperatures will require specially formulated high temperature couplants.

Inherent in ultrasonic thickness measurement is the possibility that the instrument will use the second rather than the first echo from the back surface of the material being measured while in standard pulse-echo mode. This may result in a thickness reading that is TWICE what it should be. The Responsibility for proper use of the instrument and recognition of these types of phenomenon rests solely with the user of the instrument.

**All velocities are approximations:**

### SOUND VELOCITY MEASUREMENT CHART

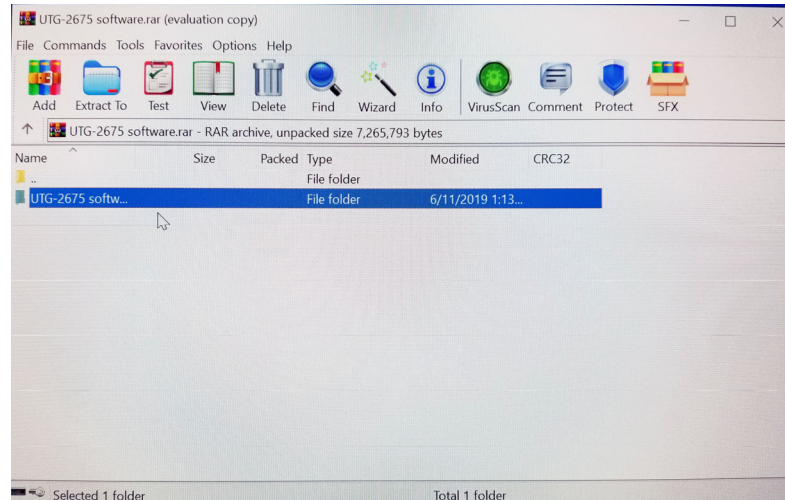
Material	Sound Velocity	
	Inch/ $\mu$ S	Meter/sec
Acrylic (Perspex)	0.1070	2730
Aluminum	0.2490	6320
Beryllium	0.5080	12900
Brass	0.1740	4430
Composite, graphite/epoxy	0.1200	3070
Copper	0.1830	4660
Diamond	0.7090	18000
Fiberglass	0.1080	2740
Glycerin	0.0760	1920
Inconel®	0.2290	5820
Iron, Cast (soft)	0.1380	3500
Iron, Cast (hard)	0.2200	5600
Iron oxide (magnetite)	0.2320	5890
Lead	0.0850	2160
Lucite®	0.1060	2680
Molybdenum	0.2460	6250
Motor oil	0.0690	1740
Nickel, pure	0.2220	5630
Polyamide	0.0870	2200
Nylon	0.1020	2600
Polyethylene, high density (HDPE)	0.0970	2460
Polyethylene, low density (LDPE)	0.0820	2080
Polystyrene	0.0920	2340
Polyvinylchloride, (PVC)	0.0940	2395
Rubber, polybutadiene	0.0630	1610
Silicon	0.3790	9620
Silicone	0.0580	1485
Steel, 1020	0.2320	5890
Steel, 4340	0.2300	5850
Steel, 302 austenitic stainless	0.2260	5740
Tin	0.1310	3320
Titanium	0.2400	6100
Tungsten	0.2040	5180
Water (20°C)	0.0580	1480
Zinc	0.1640	4170
Zirconium	0.1830	4650
Material	V (in./ $\mu$ sec)	V (m/sec)
Acrylic (Perspex)	0.1070	2730
Aluminum	0.2490	6320
Beryllium	0.5080	12900

## DATA OUTPUT INSTRUCTIONS:

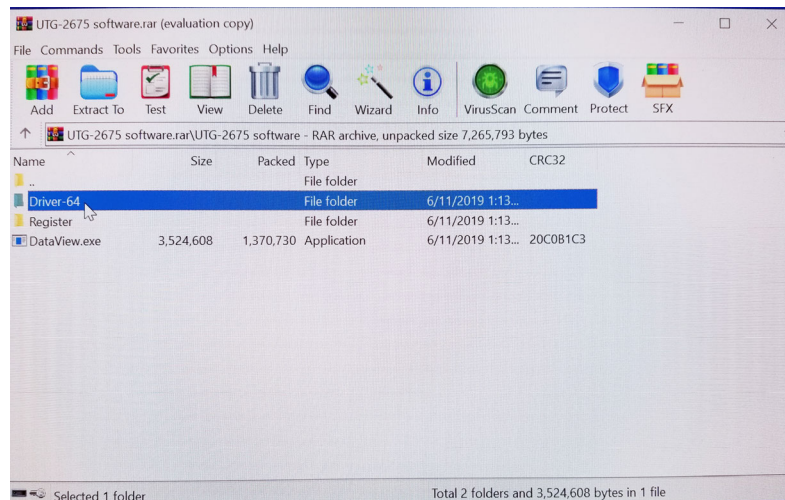
Step 1: Install the supplied USB flash drive to obtain the data output software for your specific model.

Step 2: Click on the model of your thickness gauge

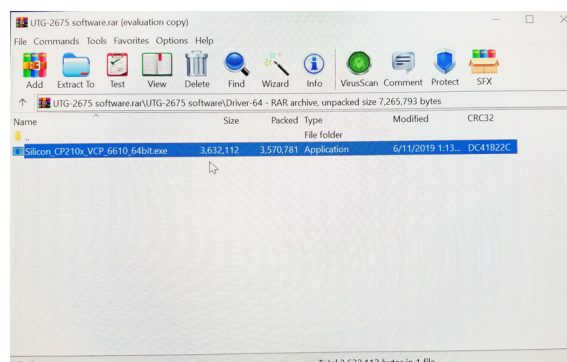
Step 3: Click on the folder called UTG-2675 software.



Step 4: Install Driver: Click on Driver 64 folder

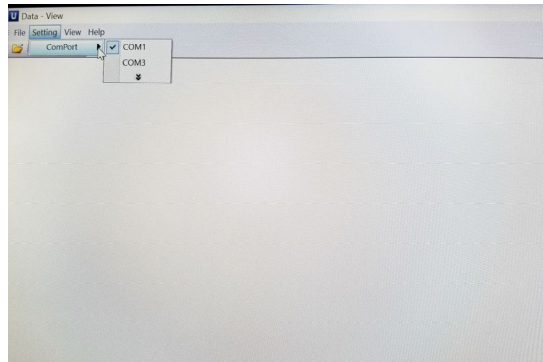


Step 5: Double click on Silicon CP210xVCP-6610-64bit.exe file to start the Installation Wizard.



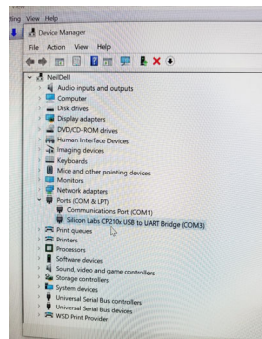
Step 6: Click on the folder that is “blank” to open the DataView program.

Step 7: Click on Settings to choose the correct Com Port. If not sure which is the correct port then follow instructions just below.



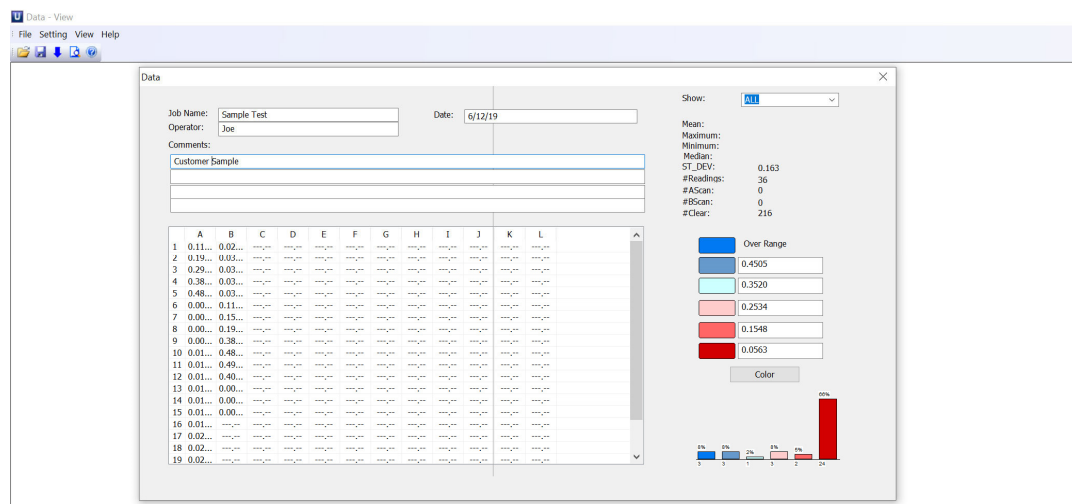
### Choosing the ComPort:

- a) Go to Device Manager in your PC and open the “Ports” file. The device manager will show the com port that the driver is loaded to. Enter this in the Comport selection shown above.



### Viewing Saved/Stored results:

Click on the Blue down arrow button.



To save report, click on the Save icon at the top left corner of the program.

# Global Connections



## **Main Headquarters: U.S.A**

### **Phase II Machine & Tool, Inc.**

21 Industrial Ave  
Upper Saddle River, NJ. 07458 USA  
Tel: (201) 962-7373  
Fax: (201) 962-8353  
General E-Mail: [info@phase2plus.com](mailto:info@phase2plus.com)

## **BEIJING, CHINA**

### **Phase II Measuring Instruments (Beijing) Ltd.**

Room 301, Bldg 2 Qing Yuan Xi Li, Haidian District, Beijing 100192, China  
Tel: +86-10-59792409  
Fax: +86-10-59814851  
General E-mail: [info@phase2china.com.cn](mailto:info@phase2china.com.cn)



Revised: May 12, 2017

# Warranty /Return Policy

## Warranty Policy:

All portable and stationary material testing instruments manufactured for/by Phase II shall be free from defects in material and workmanship for a period of 1 to 5 full years (depending upon model) from date of purchase. Parts found to be defective shall be replaced or repaired at Phase II's sole discretion. Products found by Phase II to be misused, abused or neglected are not covered under this warranty. Parts not covered by this warranty are normal wear and consumable items such as (but not limited to) impact balls, impact bodies, diamond indenters, carbide ball indenters, impact springs, cables and connectors, batteries, diamond stylus, contact probes, points and test blocks.

**Consumable (wearable) items such as cables and probes have a 90 day warranty from date of purchase.**

This warranty is exclusive and in lieu of all other warranties whether written, oral or implied, including any implied warranties or merchantability or fitness for a particular purpose. In no event shall Phase II be liable for any incidental, special or consequential damages of any nature.

Any attempts to "open, modify, or tamper with" this device by anyone other than Phase II will result in a voided warranty.

## Return Policy:

All Phase II products must have authorization prior to return.

If product is not acceptable for any reason including application issues and demonstrations, authorization for return must be obtained within 5 days of receipt of product. Unit must be in same new condition it was received. Failure to do so will result in an automatic 15% restocking fee. Returns after 30 days will not be accepted.