

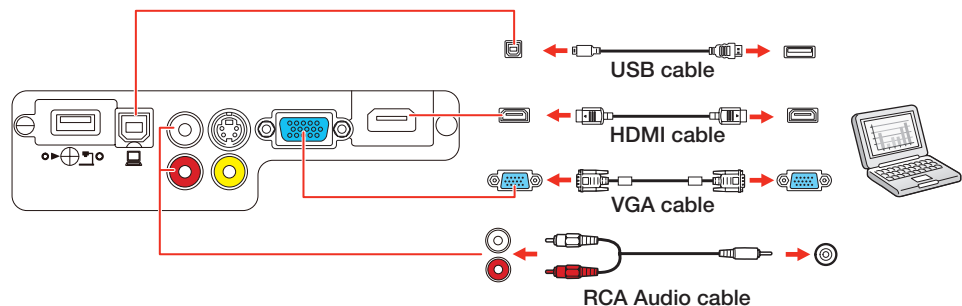
# Quick Setup

Before using the projector, make sure you read the safety instructions in the online *User's Guide*.

## Connect the projector

Choose from the following connections. See the sections below or the online *User's Guide* for details.

### Computer



### USB port


Connect the square end of a USB cable to the projector's **USB-B** (square) port. Connect the flat end of the cable to any USB port on your computer.

**Windows® XP or later:** After turning on the projector, follow the on-screen instructions to install the Epson® USB Display software (**EMP\_UDSE.EXE**; only on first connection). If the software screen does not display automatically, open **My Computer** or **Computer**, then double-click **EPSON\_PJ\_UD**.

**OS X 10.5.1 or higher:** After turning on the projector, the setup folder for USB Display appears in the Finder. Double-click **USB Display Installer** and follow the on-screen instructions to install the Epson USB Display software (only on first connection).

**Note:** If you have problems installing the USB Display software, make sure the **USB Type B** setting in the projector's **Extended** menu is set to **USB Display**. See the online *User's Guide* for instructions.

### Computer port

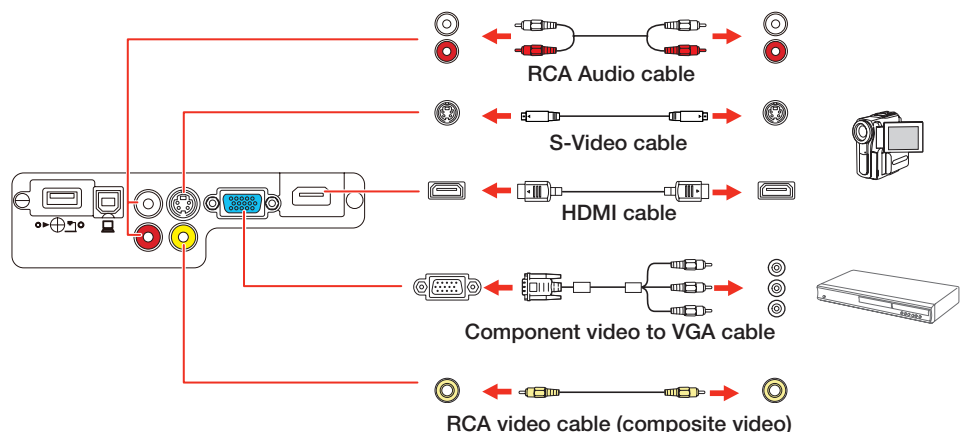
Connect one end of a VGA cable to the projector's **Computer** port, and the other end to your computer's  monitor port. If you are using a laptop, switch it to external display (see "Troubleshooting"). You can also connect an audio cable.

### HDMI port

Connect one end of an HDMI cable to the projector's **HDMI** port and the other end to an HDMI port on your computer.

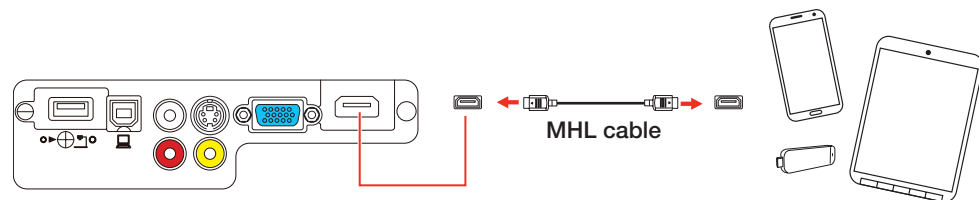
### Video device

Connect up to 4 video devices and use the **Source Search** button on the projector or remote control to switch between them.



### Mobile media device

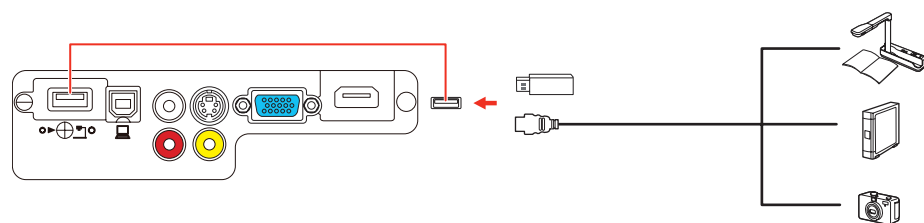
Connect tablets, smartphones, and other devices that support the MHL™ standard to the **HDMI/MHL** port.



Some devices may require an adapter or may not require an MHL cable. Not all features or functions may be supported. Check your device's documentation for more information.


### Camera, USB device, or Epson DC-06 document camera

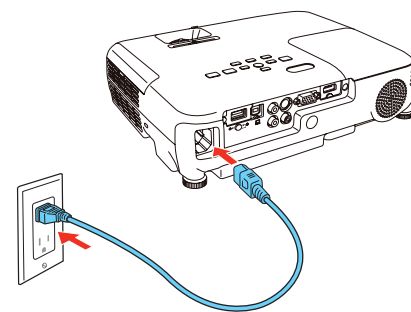
Connect a digital camera, USB flash drive, USB storage device, or Epson DC-06 document camera to the projector's **USB-A** (flat) port.



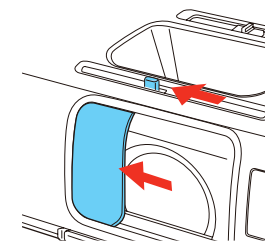
If you connect a digital camera, USB flash drive, or USB storage device, you can use the projector's PC Free feature. You can also connect other Epson document cameras to the projector. See the online *User's Guide* for details.


## Turn on your equipment

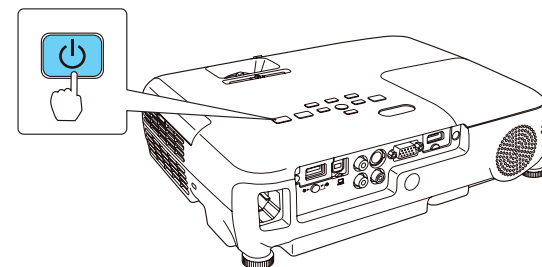
- 1 Turn on your computer or video source.
- 2 Plug in the projector. The  power light on the projector turns blue.







- 3 Open the **AV Mute** slide all the way.



- 4 Press the  power button on the projector or remote control. The projector beeps, and the Status light flashes blue and then stays on.



**Note:** To shut down the projector, press the  power button twice, then unplug it. You don't have to wait for the projector to cool down.

- 5 The default language of the menu system is English. To select another language, press the **Menu** button on the projector or remote control. Select **Extended** and press . Select **Language** and press . Select your language and press . Press the **Menu** button to exit the menu system.

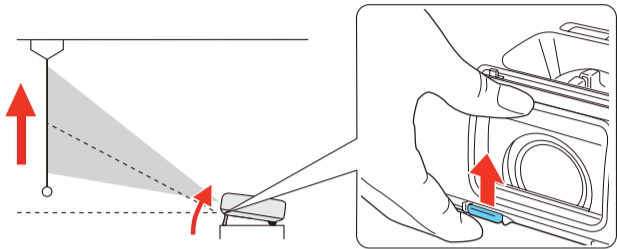


# Adjust the image

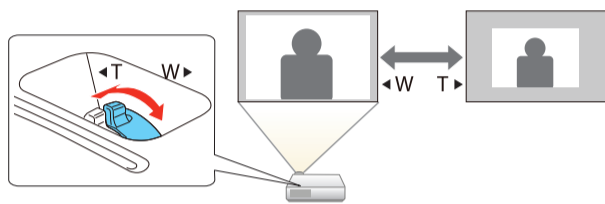
- 1 If you don't see an image, press the **Source Search** button on the projector or the remote control to select the image source.

**Note:** If you still see a blank screen or have other display problems, see the troubleshooting tips on the back of this sheet.

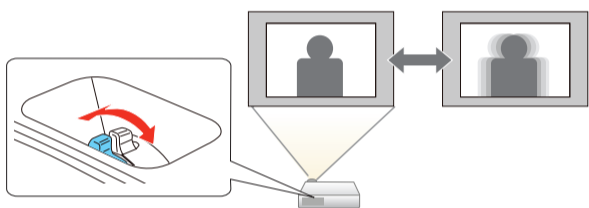
- 2 To raise the image, press the foot release button and lift the front of the projector. Release the button to lock the foot in position.



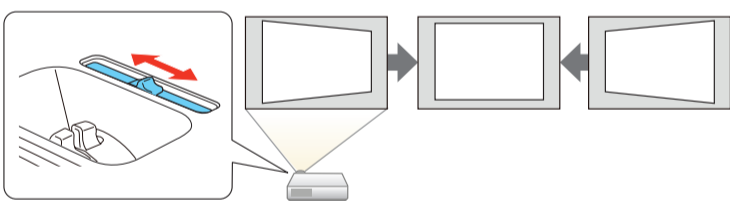
- 3 Turn the zoom ring to enlarge or reduce the image.



- 4 Turn the focus ring to sharpen the image.



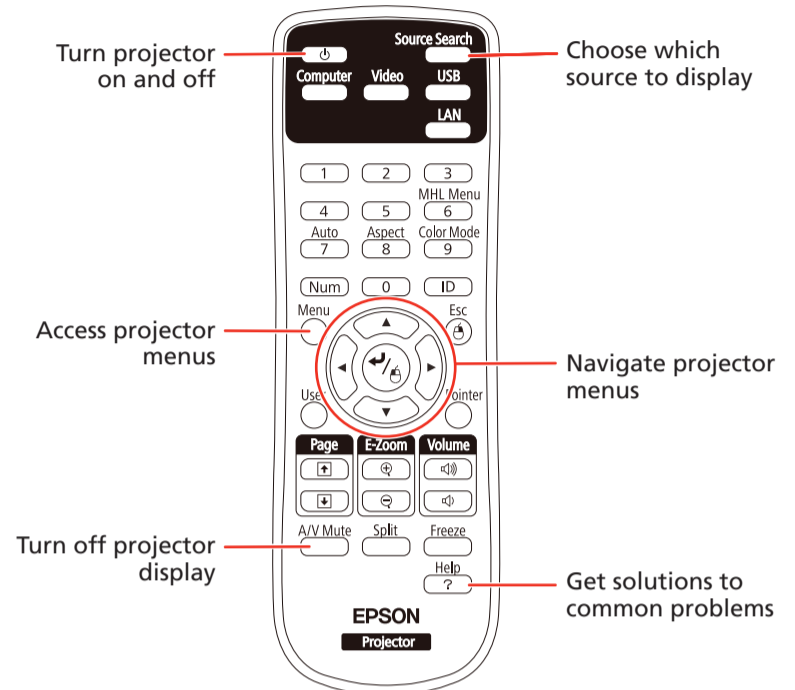
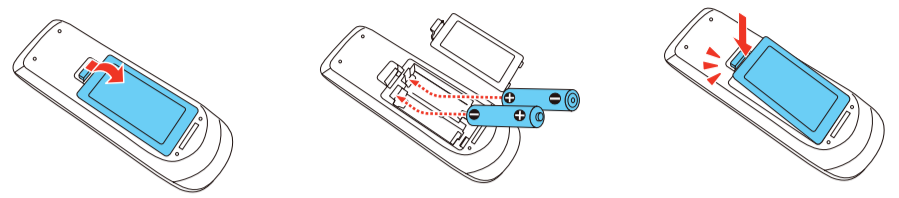
- 5 If your image looks like or , you may have placed the projector off to one side of the screen at an angle. Place the projector directly in front of the center of the screen, facing the screen squarely. If you can't move the projector, use the horizontal keystone slider to correct the image.



- 6 Your projector automatically adjusts images that look like or , but if necessary you can press the or button on the projector to correct it.

# Using the remote control

Make sure the batteries are installed as shown (two AA batteries).

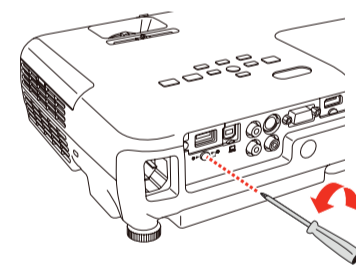


For more information on using the remote control, see the online *User's Guide*.

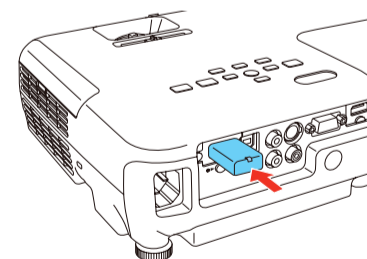
# Project wirelessly from a computer

Follow the steps here to connect the projector over a wireless network.

- 1 To install the wireless LAN module, first remove the screw as shown.



- 2 Connect the wireless LAN module to the **USB-A** (flat) port.

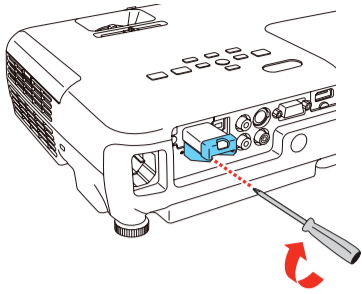


- 3 To configure your projector for wireless projection, do one of the following:

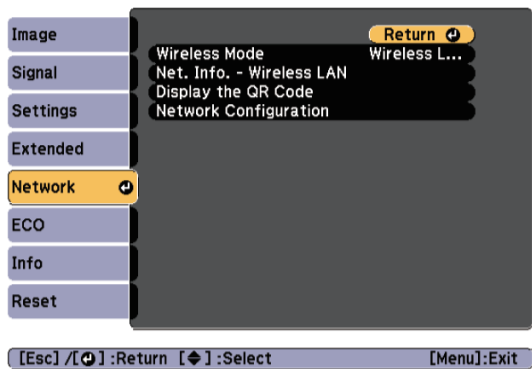
- If you're using the optional Quick Wireless Connection USB key (Windows only, part number V12H005M09), press the **LAN** button on the remote control. When you see SSID and IP address information on the screen, remove the wireless LAN module and connect the key to the projector's **USB-A** port. Look for the displayed message, remove the key, and connect it to a USB port on your computer. Follow your computer's on-screen instructions to install the driver, then reconnect the wireless LAN module to the projector's **USB-A** port. For details, see the online *User's Guide*.
- If you're not using the key, continue with step 4.



- 4 Attach the wireless LAN module cover and secure it using the screw you removed.

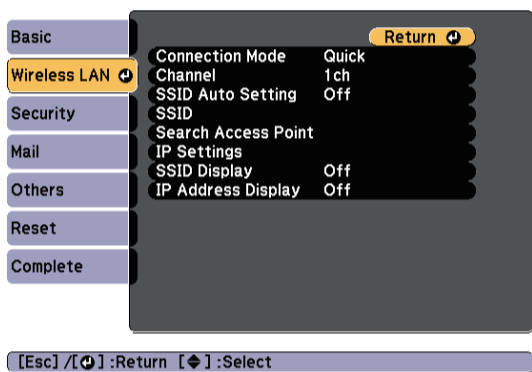


- 5 Press the **Menu** button on the remote control, select the **Network** menu, and press  $\leftarrow/\rightarrow$ .



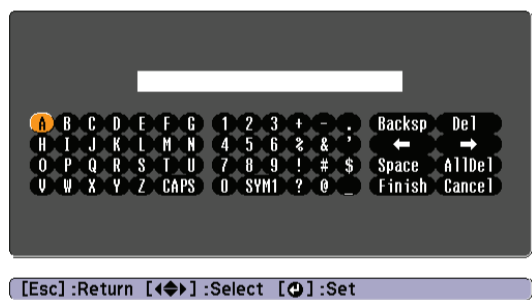
- 6 Choose **Network Configuration** and press  $\leftarrow/\rightarrow$ .

- 7 Select the **Wireless LAN** menu and press  $\leftarrow/\rightarrow$ .



- 8 Choose **Connection Mode**, press  $\leftarrow/\rightarrow$ , select **Quick** (for a direct connection to a computer, tablet, or smartphone) or **Advanced** (for a connection to a router or access point), then press  $\leftarrow/\rightarrow$  again. When you're finished, press **Esc** to return to the Wireless LAN menu.

- 9 If you chose the Advanced connection mode, select **SSID**, press  $\leftarrow/\rightarrow$  and enter your network name (SSID) on the screen that appears.



- To select a number or character, use the arrow buttons on the remote control to highlight it, then press  $\leftarrow/\rightarrow$ .
- To switch between uppercase and lowercase letters, select **CAPS** and press  $\leftarrow/\rightarrow$ .
- To change the displayed symbols, select **SYM1** or **SYM2** and press  $\leftarrow/\rightarrow$ .

When you're finished entering the SSID, select **Finish** and press  $\leftarrow/\rightarrow$ .

- 10 If you chose the Advanced connection mode, select **IP settings** and press  $\leftarrow/\rightarrow$ .

If your network assigns addresses automatically, turn on **DHCP**. If not, turn off **DHCP** and enter the projector's **IP Address**, **Subnet Mask**, and **Gateway Address**, as needed.

To enter numbers, use the arrow buttons on the remote control to highlight a number, then press  $\leftarrow/\rightarrow$ . When you're finished entering an address, highlight **Finish**, then press  $\leftarrow/\rightarrow$ . Press **Esc**.

- 11 To prevent the SSID and IP address from appearing on the network standby screen, set the **SSID Display** and **IP Address Display** settings to **Off**.

- 12 When you're finished selecting settings in the Wireless LAN menu, press **Esc**.

- 13 If you are connecting the projector to a secure network, select the **Security** menu and press  $\leftarrow/\rightarrow$ . Then select settings and press **Esc** when you're finished.

- 14 Select **Complete** and press  $\leftarrow/\rightarrow$ , then select **Yes** and press  $\leftarrow/\rightarrow$  again to save your settings.

- 15 See "Install network software" for additional instructions.

## Install network software

To project over the network, download and install the EasyMP® Network Projection software on each computer that you will project from. To monitor and control your projector over the network, download and install the EasyMP Monitor software (Windows only). Click the icons on your desktop to access the software download pages.

For instructions on installing and using your network software, click the icons on your desktop to access the online *EasyMP Network Projection Operation Guide* or *EasyMP Monitor Operation Guide* (requires an Internet connection). If you don't see the software download or guide icons on your desktop, you can install them from the projector CD or go to the Epson website, as described in "Where to get help."

# Project wirelessly from a mobile device

You can connect your mobile device and projector using Epson iProjection™ and a QR code. Make sure the wireless LAN module is installed in your projector and the latest version of Epson iProjection is installed on your device.

## Install the Epson iProjection app

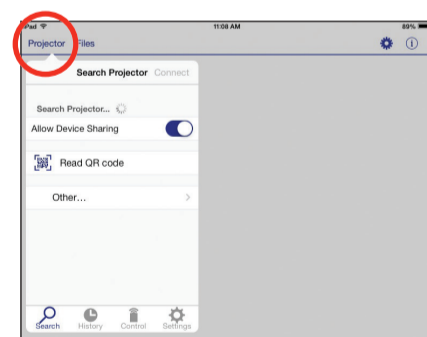
To project from an iOS or Android device, download and install the Epson iProjection app. Visit [epson.com/projectorapp](http://epson.com/projectorapp) (U.S.) or [epson.ca/projectorapp](http://epson.ca/projectorapp) (Canada) for more information.



## Direct wireless connection

Make sure your device and Epson projector are not connected to a network and your Epson projector's **Connection Mode** is set to **Quick**.

- Tap **iProjection** on your device's Home screen.
- Tap **Projector** to open the Search Projector menu.




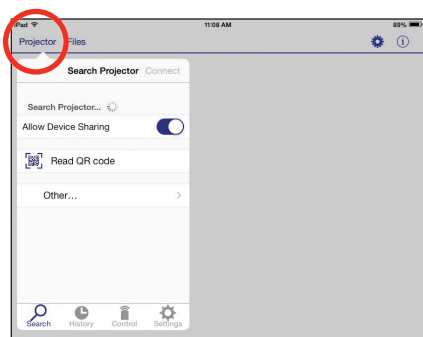
- Tap **Read QR code**.
- Point your device's camera at the QR code your projector displays; the QR code is read automatically.
- Tap **OK** to register your projector's Wi-Fi profile.
- Tap **Install** to install your projector's Wi-Fi profile.
- Tap **Install Now** at the Unsigned Profile notification.
- Tap **Done** to exit the Profile Installed screen.
- Tap **OK** to confirm the connection to the projector.
- Note the projector network name (SSID) shown on your device's screen. Then go to the Wi-Fi settings on your device to select that network.

Your device and Epson projector are now connected.

## Network connection

Make sure your projector and mobile device are connected to the same network.

- 1 Tap  **iProjection** on your device's Home screen.
- 2 Tap **Projector** to open the Search Projector menu.

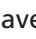


- 3 Tap **Read QR code**.
- 4 Point your device's camera at the QR code your projector displays; the QR code is read automatically.

Your device and Epson projector are now connected.

## Troubleshooting

If you see a blank screen or the **No signal** message after turning on your computer or video device, check the following:

- Make sure the Status light on the projector is blue and not flashing, and the **AV Mute** slide is open.
- Press the **Source Search** button on the projector or the remote control to switch to the correct image source, if necessary.
- If you're using a Windows laptop, press the function key on your keyboard that lets you display on an external monitor. It may be labeled **CRT/LCD** or have an icon such as . You may have to hold down the **Fn** key while pressing it (such as **Fn + F7**). Wait a moment for the display to appear.
- If you're using a Mac laptop, open **System Preferences** and select **Displays**. Click the **Arrangement** tab and select the **Mirror Displays** checkbox.

## Where to get help

### Manuals

For more information about using the projector, click the icons on your desktop to access the online manuals (requires an Internet connection). If you don't have icons to the manuals, you can install them from the projector CD or go to the Epson website, as described below.

### Telephone support services

To use the Epson® PrivateLine® Support service, call (800) 637-7661. This service is available for the duration of your warranty period. You may also speak with a support specialist by calling (562) 276-4394 (U.S.) or (905) 709-3839 (Canada).

Support hours are 6 AM to 8 PM, Pacific Time, Monday through Friday, and 7 AM to 4 PM, Pacific Time, Saturday. Days and hours of support are subject to change without notice. Toll or long distance charges may apply.

### Internet support

Visit [epson.com/support](http://epson.com/support) (U.S.) or [epson.ca/support](http://epson.ca/support) (Canada) for solutions to common problems. You can download utilities and documentation, get FAQs and troubleshooting advice, or e-mail Epson.

### Registration

Register today to get product updates and exclusive offers. You can use the CD included with your projector or register online at [epson.com/webreg](http://epson.com/webreg).

## Optional accessories

For a list of optional accessories, see the online *User's Guide*.

You can purchase screens or other accessories from an Epson authorized reseller. To find the nearest reseller, call 800-GO-EPSON (800-463-7766). Or you can purchase online at [epsonstore.com](http://epsonstore.com) (U.S. sales) or [epson.ca](http://epson.ca) (Canadian sales).

**EPSON**  
EXCEED YOUR VISION



EPSON, PowerLite, and EasyMP are registered trademarks, Epson iProjection is a trademark, and EPSON Exceed Your Vision is a registered logomark of Seiko Epson Corporation. PrivateLine is a registered trademark of Epson America, Inc.

Mac and OS X are trademarks of Apple Inc., registered in the U.S. and other countries.

General Notice: Other product names used herein are for identification purposes only and may be trademarks of their respective owners. Epson disclaims any and all rights in those marks.

This information is subject to change without notice.

© 2014 Epson America, Inc., 5/14  
Printed in XXXXXX

CPD-41174