

**EPSON**<sup>®</sup>  
EXCEED YOUR VISION



## EPSON<sup>®</sup> DC-20 DOCUMENT CAMERA



**Touchboards**  
205 Westwood Ave, Long Branch, NJ 07740  
Phone: 866-94 BOARDS (26273) / (732)-222-1511  
Fax: (732)-222-7088 | E-mail: sales@touchboards.com

### **Zoom ahead of the class with amazing image quality.**

The perfect tool for a dynamic learning environment, the EPSON DC-20 makes it easy to display books, experiments and 3D objects, making lessons more interactive and enjoyable. Write annotations over live images quickly and easily by connecting a computer mouse directly to the camera — no computer necessary. The DC-20 also features a large imaging sensor, ensuring high-quality, clear images in any light. Students can see the finest details with the powerful 12x optical zoom and 10x digital zoom. Use the included microscope adapter to simultaneously share microscopic events with the entire class. The DC-20 also features 30 frames-per-second video (at full resolution) to display your lessons with smooth performance and minimal delay. Record classroom lessons with the DC-20's camera and built-in microphone, or plug in your own external microphone. Take advantage of the included software to upload what you've captured to popular websites, such as YouTube<sup>®</sup> or SchoolTube<sup>®</sup>, for students who have missed a class or want to review lesson materials.<sup>1</sup> With innovative teaching tools, advanced connectivity, and a compact, durable design, the DC-20 is an ideal fit in any classroom.

- Deliver engaging lessons with amazing close-up detail** — 12x optical zoom and 10x digital zoom
- Remarkable image quality** — large imaging sensor provides sharp, clear images in any light
- Future-ready connectivity** — HDMI digital connectivity for high-definition video

## The perfect partner to EPSON projectors — the best-selling projectors in the world.

Epson understands education and has a solution no matter what your teaching scenario. Built with image quality and reliability in mind, EPSON projectors enhance communication and inspire collaboration, while offering a low total cost of ownership. From long-throw projectors designed for traditional educational settings to ultra-short-throw, interactive, and all-in-one solutions built for progressive classrooms, Epson has the model made for you.



### Auto-select output resolution (1080p/720p/SXGA/WXGA/XGA) for easy setup and perfect images every time

The DC-20 automatically detects the native aspect ratio of EPSON projectors and selects the correct output resolution to match. It is capable of displaying 1080p, 720p, SXGA, WXGA and XGA resolutions.



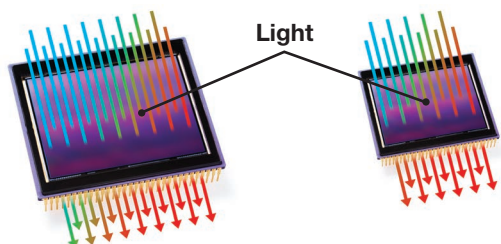
### Amazing image quality and performance

- Large imaging sensor for crisp, clear images in any light
- 12x optical zoom plus 10x digital zoom for ultra-sharp detail and clear magnification
- 30-frames-per-second video at full resolution for ultra-smooth video performance and minimal delays



### Higher quality images with new large sensor

The DC-20 features a large, highly efficient imaging sensor that captures more light per pixel. As a result, you get brighter images with amazing quality and detail.



▲ DC-20 — large sensor    ▲ Competitor — small sensor



### Better Products for a Better Future™

For more information on Epson's environmental programs, go to [eco.epson.com](http://eco.epson.com)

### Eco Features

- RoHS compliant
- Recyclable product<sup>2</sup>
- Epson America, Inc. is a SmartWay<sup>SM</sup> Transport Partner<sup>3</sup>





## Fast setup with advanced connectivity and flexible teaching tools

# HDMI®

- Versatile connectivity including:
  - USB and VGA for easy connection to a PC/Mac®
  - HDMI, VGA and Composite for easy connection to a projector
  - SD card slot<sup>4</sup> and USB flash drive port
  - Microphone input to connect your external microphone, so you can record audio<sup>5</sup>
- 12" x 17" capture area makes it easy to display two full pages
- Display live and captured images side-by-side using the Split Screen function, perfect for comparing "before" and "after" photos
- Microscope adapter included — connects to any standard microscope eye-piece to share magnified images with the entire class
- Capture, store and present images via 1GB internal memory, SD card slot<sup>4</sup> or USB flash drive port



Microscope adapter included (microscope not included)



Versatile connectivity



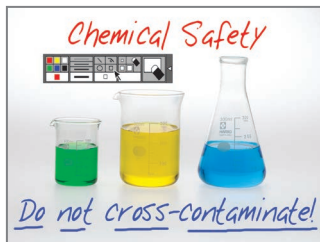
USB flash drive support



Built-in SD card slot<sup>4</sup>

## PC-free annotations

Write or draw over live images simply by connecting your USB computer mouse to the DC-20.



## Additional Features/Benefits

- One-touch AV recording
- Built-in microphone to record audio with video, or plug in your own external microphone<sup>5</sup>
- Great positioning flexibility and stability
- Camera head rotates  $\pm 90$  degrees to capture many angles — can also be used as a webcam to capture students, notes on the whiteboard, and more
- Larger intuitive buttons and icons — for easy navigation and control



Great positioning flexibility, 90°



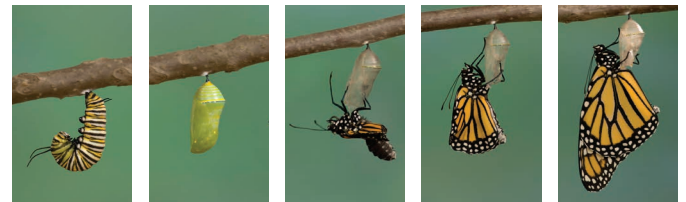
Rotating camera head  $\pm 90^\circ$



Intuitive buttons and icons

## Advanced application software included (PC and Mac compatible)

- Make annotations over live and captured images
- Make time-lapse movies to record and create projects such as the growth of plants, organic processes and more
- Easily upload your videos to popular education websites like YouTube and SchoolTube<sup>1</sup>
- Tag captured images/videos for easy file management and organization



Time-lapse function

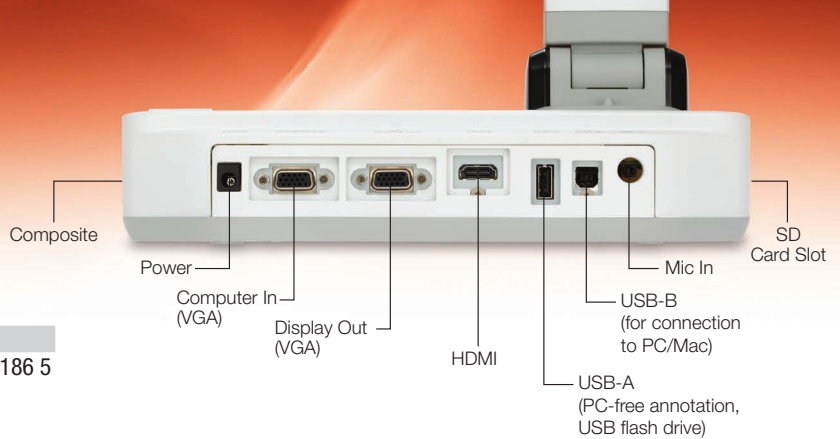
## Compact, foldable design

The DC-20's sleek, compact design makes it ideal for space-constrained classrooms or for summertime storage.



**EPSON® DC-20**  
Document Camera

Product Name	Product Code	UPC
EPSON DC-20 (ELPDC20)	V12H500020	0 10343 90186 5



**Video**

**Pick-up Device**

1/2.7" CMOS sensor

**Effective Pixels**

1920 x 1080, 2 megapixels

**Frame Rate**

30 fps maximum

**Output**

VGA: SXGA (1280 x 1024), XGA (1024 x 768), WXGA (1280 x 800), HD (1360 x 768), 1080p

USB: QVGA, VGA, SVGA, XGA, SXGA

HDMI: 480p/720p/1080p

Composite Video: NTSC/PAL

**White Balance**

Auto

**Exposure**

Auto

**Brightness**

Auto

**Optical System**

**Lens**

F – number: 3.4-5

**Capture Area**

11.7" x 16.5" (XGA)

11.7" x 20.7" (1080p)

**Zoom**

12x optical zoom

10x digital zoom

**Focus**

Auto

**Image Rotation**

±90 degrees

**Illumination System**

**Upper**

White LED x 2

**Brightness**

250 lx or above

**Functions**

**User Functions**

Zoom, Freeze, Auto focus, LED, Brightness, Contrast, Negative, Black and white, Split Screen, Slideshow, Video capture, Digital scroll (pan/tilt), Flicker reduction, Image rotation, Source (PC/DC), Auto detect aspect, Video recording, Video playing, PC-free annotation

**Interface**

**Interface Port**

Input: VGA, mic input, USB-A (for PC-free annotation, USB flash drive)

Output: VGA, USB-B, HDMI, Composite video

**Other**

**Operating Temperature**

41 ° to 95 °F (5 ° to 35 °C)

**Operating Humidity**

20 to 80%

**Power Supply Voltage**

100 to 240 V AC/DC

**Power Frequency**

50/60 Hz

**Output Voltage of AC Power Adapter**

DC 12 V

**Power Consumption (operating)**

17 W

**Power Consumption (standby mode)**

0.48 W

**Analog Output Standard**

NTSC/PAL

**Memory**

1GB internal

SD card slot (SD/SDHC only)<sup>4</sup>

USB flash drive

**Security**

Kensington® lock support

Metal security bar

Security mounting holes

**Operating System Compatibility**

Windows® 8, Windows 7, Windows Vista®,

Windows XP SP2

Mac OS® X 10.5.x, 10.6.x and 10.7.x

**Connectivity**

Hi-Speed USB 2.0

**Dimensions (W x D x H)**

**Open**

10.6" x 12.5" x 19.6" (W x D x H)

**Closed/Folded**

14.9" x 4.8" x 4.7" (W x D x H)

**Weight**

6.6 lb

**Application Software**

**Language**

13 languages

**Functions**

Annotation, Edit, Preview, Video capture, Still image capture, Burst-capture, Time-lapse, Web upload, File management

**Saving Format**

Still Image: JPG, BMP

Video (Windows): WMV, MPG, AVI

Video (Mac): MOV

**Support**

**The EPSON Connection<sup>SM</sup>**

Pre-sales support (U.S. and Canada):

800-463-7766

Internet website:

www.epson.com

**Service Programs**

Two-year limited warranty, EPSON Road Service program, toll-free support

**What's In The Box**

DC-20 document camera, AC power adapter with cord, USB cable, application software CD, remote control, (2) AA batteries, VGA cable, microscope adapter, User's Guide CD, Quick Start guide



▲ Built-in security features



▲ Remote control included



▲ Built-in LED lights

1 Direct upload feature available on PC only.

2 See our website for convenient and reasonable recycling options at www.epson.com/recycle

3 SmartWay is an innovative partnership of the U.S. Environmental Protection Agency that reduces greenhouse gases and other air pollutants and improves fuel efficiency.

4 SD card not included.

5 Microphone input supports electret condenser microphones (ECM) only.



Better Products for a Better Future™  
eco.epson.com

EPSON America, Inc.  
3840 Kilroy Airport Way, Long Beach, CA 90806

EPSON Canada Limited  
185 Renfrew Drive, Markham, Ontario L3R 6G3

www.epson.com  
www.epson.ca