

# ROBOSHOT™ BROADCAST

## High Definition PTZ Conferencing Camera Featuring 30X Optical Zoom Lens and Tri-Synchronous™ Motion

The all-new RoboSHOT Broadcast HD PTZ Camera is a powerful, professional quality PTZ camera with high quality imaging, exceptional detail and marvelous color reproduction. This camera offers integrators, dealers and end users with an incredible advantage over other professional PTZ cameras available today.

With a feature set as long as the Mississippi, the power of the RoboSHOT Broadcast is perfect for medium to large rooms and provides exceptional support for applications including, House of Worship services, large auditorium A/V systems, large distance learning classrooms, live event theatres, IMAG for performances, large lecture theatres with lecture capture and more!

The key features of the RoboSHOT cameras are Tri-Synchronous Motion, Range-Set™ for setting optical limits and the advanced image sensor, lens and ISP (image signal processor) combination.

The Tri-Synchronous Motion algorithm in the RoboSHOT cameras is capable of moving all three (pan, tilt and zoom) axes simultaneously. The algorithm calculates the position and velocity of the smooth, direct-drive motor movements between the presets so pan, tilt and zoom arrive at the preset shot simultaneously, which allows for smooth and useable on-air camera movements. That's right, there's no more pan/tilt, then zoom like other PTZ cameras out there.

The Range-Set feature allows the camera's zoom range to be custom tailored to the room by setting optical zoom limits on both the tele and wide ends of the lens. With Range-Set there is no way for the end-user to mess up the shot by zooming-in too close (nose hair cam) or zoom-out too far capturing a nice view of the floor, stage lighting fixtures or ceiling fans. The Range-Set ensures that in large room implementations, the camera has the best chance to perform perfectly.

The lens, image sensor and ISP are the magic beans behind this camera's remarkable video performance characteristics. The lens is a powerful, glass, multi-element lens featuring a 30X optical zoom with an impressive 2.3° tele end and 63.7° wide field of view. The Exmor® 1/2.8", 2.34 Megapixel, Full HD (1080p/60) high-speed, low noise CMOS image sensor combined with the Advanced ISP produces totally awesome, vivid, realistic color with super-fast, razor sharp auto focus and iris routines.

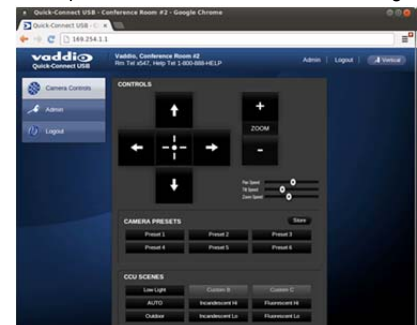
The RoboSHOT Broadcast uses the Vaddio EZCamera™ System to transport HSDS™ differential video, power and control to and from the camera over Cat-5e cables. The proven Quick-Connect™ Interfaces immediately provide the ultimate in configuration flexibility. Four models of Quick-Connects are available including the Quick-Connect USB Mini, Quick-Connect SR, Quick-Connect USB and the Quick-Connect Universal CCU.

The RoboSHOT cameras have an Ethernet port and a built-in web server, which allows the user to control the camera functions on a web page with any browser from anywhere in the world over the IP network. Telnet, IR Remote and RS-232 control for the camera are available to satisfy almost any, if not all, system control requirements.

The RoboSHOT Broadcast was designed for the times and represents a new era in specifying and integrating professional quality cameras into large room system integrations. In short, it has never been easier to integrate cameras into any large to medium room integration than with the RoboSHOT Broadcast.



Example: Built-in Camera Control Web Page



### WHAT'S INCLUDED

- One (1) RoboSHOT Broadcast HD Robotic PTZ Camera
- One (1) IR Remote Commander
- One (1) Thin Profile Wall Mount and mounting hardware
- One (1) EZCamera Control Adapter
- One (1) User and Installation Guide

\*Choice of Quick-Connect System (sold separately)

### QUICK-CONNECT SYSTEMS\*

Quick-Connect System Interface Choices Include:

- Quick-Connect USB Mini
  - Quick-Connect SR
  - Quick-Connect USB
  - Quick-Connect Universal CCU
- (Interfaces include power supply and some cables)

Rear View of the RoboSHOT Broadcast HD PTZ Camera

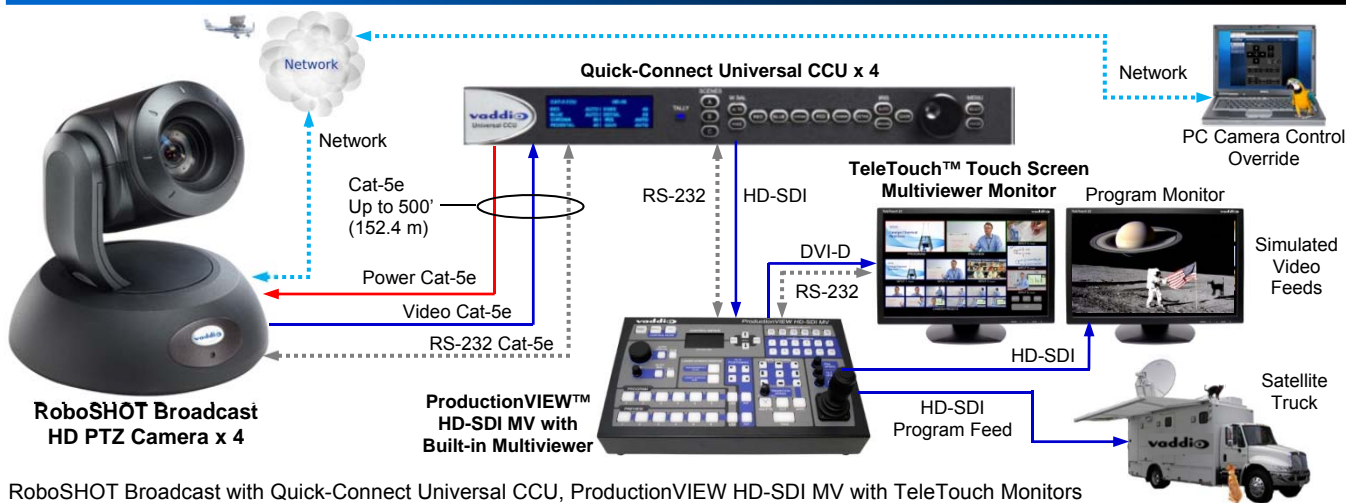


**Rear Panel Connections (left to right):**

- ① Ethernet 10/100 port on shielded RJ-45 for access to the built-in web pages, Telnet control or system updates/upgrades
- ② HD Video Select rotary switch for setting the cameras HD output resolution
- ③ Camera Settings DIP switches for 3-IR frequency, IR on/off, Image Flip (camera is invertible), Normal or Super-wide Mode
- ④ RS-232 port on shielded RJ-45 connector used with all Quick-Connect Interfaces
- ⑤ EZ-Power Video port on shielded RJ-45 for 24 VDC Quick-Connects (2-Cat-5 up to 100'/30.48m), for video only with the CCU systems
- ⑥ 36 VDC Port on shielded RJ-45 connector for power over Cat-5e up to 500' (152.4m), video from EZ-Power Video port

SYSTEM DRAWING

Configuration Example



RoboSHOT Broadcast with Quick-Connect Universal CCU, ProductionVIEW HD-SDI MV with TeleTouch Monitors

GENERAL SPECIFICATIONS\*

|                                  |  |
|----------------------------------|--|
| Part Number                      | RoboSHOT Conference 999-9910-000 (Worldwide) Quick-Connect Interface Required  |
| Image Sensor                     | Exmor 1/2.8", 2.34 Megapixel, Full HD (1080p/60 native) High-speed, Low Noise CMOS Image Sensor  |
| Lens                             | 30X Optical Zoom   |
| Horizontal FOV                   | 63.7° Wide end to 2.3° Tele end, f=4.3mm to 129mm, F1.6 to F4.7  |
| Supported Resolutions            | HD Resolutions: 1080p/60/59.94/50/30/25, 1080i/60/59.94/50, 720p/60/59.94/50/30/25 16:9 Format   |
| Vaddio Special Features          | Tri-Synchronous Motion: Concurrent PTZ motor movement and simultaneous PTZ arrival at a stored preset<br>Range-Set: Optical zoom limits on tele end and wide end to limit shot badness<br>Advanced ISP: Vivid and accurate color with extremely fast, razor sharp automatic focus and iris routines      |
| S/N Ratio                        | > 50 dB  |
| Minimum Illumination             | 1.0 lx (F1.6, 50IRE), Recommended illumination >100 lux and above, way above   |
| Minimum Distance                 | 10mm (wide end) to 1.2m (tele end)   |
| Pan & Tilt Angle/Speed           | Pan/Tilt Angles: ±165°, Tilt: +90°, -30°, Pan/Tilt Speeds: Pan: 120°/sec, Tilt: 100°/sec   |
| Sync System                      | Internal   |
| Control Methods                  | Ethernet: Internal Web Pages and Telnet, IR Remote Commander and RS-232 for external controllers   |
| Dimensions/Weight                | 6.942" (176.3mm) H x 7.056" (179.2 mm) W x 6.757" (171.6mm) D, 5.225463 lbs. (2.3702301kg) Approximately   |
| Quick-Connect Systems (Pick one) | Quick-Connect USB: USB 2.0 (MJPEG) or IP (H.264) Streaming, Simultaneous HDMI and YPbPr outputs<br>Quick-Connect Universal CCU: Simultaneous HD-SDI, HDMI and YPbPr (HD) outs with image controls<br>Quick-Connect SR: YPbPr output with IR forwarding<br>Quick-Connect USB Mini: USB 2.0 Streaming Only |

\*Specifications are subject to change and revision prior to product release.