



# Professional Video Inspection Systems 2014



DCS14

**Precision, Specialty and Innovation . . . Since 1922**

<b>NEW PRODUCTS</b>	<b>3</b>
<b>HIGH PERFORMANCE VIDEO SYSTEMS</b>	<b>4 – 5</b>
<b>CONFIGURATION GUIDE</b>	<b>6 – 7</b>
<b>WIRELESS RECORDING BORESCOPE</b>	<b>8</b>
<b>WIRELESS ARTICULATING RECORDING BORESCOPE</b>	<b>9</b>
<b>VGA RECORDING VIDEO BORESCOPE SYSTEM</b>	<b>10 – 11</b>
<b>RECORDING VIDEO BORESCOPE</b>	<b>12</b>
<b>ARTICULATING RECORDING VIDEO BORESCOPE</b>	<b>13</b>
<b>PIPE &amp; DUCT RECORDING BORESCOPE</b>	<b>14</b>
<b>VIDEO BORESCOPE SYSTEM W/4.9mm PROBE</b>	<b>15</b>
<b>RUGGED VGA RECORDING BORESCOPE</b>	<b>16</b>
<b>BORESCOPE CONSOLES &amp; PROBE CONTROLLER</b>	<b>17</b>
<b>VGA RESOLUTION ARTICULATING PROBES</b>	<b>18</b>
<b>VGA RESOLUTION PROBES</b>	<b>19</b>
<b>THE SEEKER™ VIDEO INSPECTION SYSTEMS</b>	<b>20 – 21</b>
<b>RUGGED RECORDING CAMERA SCOPE</b>	<b>22</b>
<b>RUGGED NON-RECORDING CAMERA SCOPE</b>	<b>23</b>
<b>THE SEEKER™ SERIES CAMERA SCOPES</b>	<b>24 – 25</b>
<b>THE SEEKER™ 400 &amp; SPECIALTY BORESCOPIES</b>	<b>26</b>
<b>SPECIALTY BORESCOPIES</b>	<b>27</b>

**DCS1700**  
Super High-Performance VGA Recording Video Borescope System (see pages 10, 11)



**DCiS1**  
iBorescope Video Inspection System (see page 27)



**P16181HP**  
**P16182HP**  
**P16183HP**  
VGA Resolution Probes w/ Light Boost And Anti-Reflection (see page 19)



**DCS800**  
Rugged Compact High-Performance VGA Recording Video Borescope System (see page 16)



**P16HPART**  
**P16HP2ART**  
**P16HP3ART**  
VGA Resolution Articulating Probes w/ Light Boost and Anti-Reflection (see page 18)



**DCS950**  
The PalmScope™ Video Inspection System (see page 26)



**DCiS1**



**DCS800**



**DCS950**



**DCS1700**



**P16HPART**



**P16181HP**

## We Call Our Video Borescopes “High-Performance Systems” for Several Good Reasons:

- They use our thinnest probes, with diameters as small as 3.9mm (0.15 in.). Even our thickest general-purpose high-performance probe, at 6mm across, is no thicker than a No. 2 pencil lead.
- The probes have superior optical specs, including close-focus and far-focus depths of field.
- Probe choices abound. Just pick the probe type (flexible-obedient or soft metal), probe diameter (3.9mm, 4.9mm, 5.5mm or 6m), probe length (1m to 30m) and viewing angle (front view, articulating or switchable front/side view) you need; one of our probes is sure to fill the bill.
- The borescopes themselves also come in several styles—for example, wired or wireless, and recording or non-recording. Whichever model you choose, your high-performance borescope will have passed a 60,000-cycle performance test, sport a color monitor, and come in a custom protective hard case.



**DCS1700**  
(see pp.10, 11)

**DCS1800**  
(see page 8)

**DCS1800ART**  
(see page 9)

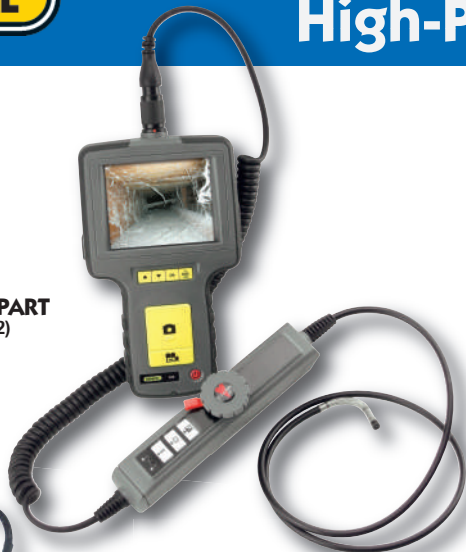
**Probe Diameters (actual size)**

- **3.9mm (0.15 in.)**
- **4.9mm (0.19 in.)**
- **5.5mm (0.22 in.)**
- **6mm (0.24 in.)**

	PRIMARY SYSTEM FEATURE(S)	Wireless recording		VGA recording, with VGA probe
		Model No.	DCS1800	DCS1800ART
<b>SYSTEM</b>	System/Component Name	High-Performance Wireless Recording Video Borescope System	High-Performance Wireless Recording Video Borescope System with Articulating Probe	The VIPER 1700 Super High-Performance VGA Recording Video Borescope System
	Display Size (diagonal)	3.5 in. (89mm)	3.5 in. (89mm)	3.5 in. (89mm)
	Wireless Range	Up to 33 ft. (10m)	Up to 33 ft. (10m)	—
	Records	Audio, video, still images	Audio, video, still images	Video, still images
	Resolution (pixels)	Video: 320 x 240 Still images: 640 x 480	Video: 320 x 240 Still images: 640 x 480	Display: 320 x 240 Probe & Recording: 640 x 480
	Zoom Level (s)	1.5X	1.5X	1.5X, 2X
	Operating Temperature	Console: 32° to 140°F (0° to 60°C); Probe: -4° to 140°F (-20° to 60°C)	Console: 32° to 140°F (0° to 60°C); Probe: -4° to 140°F (-20° to 60°C)	Console: 32° to 140°F (0° to 60°C) Probe: -4° to 140°F (-20° to 60°C)
	Memory (capacity of included SD card)	4GB	4GB	4GB
	Power Source	Rechargeable Li-ion batteries	Rechargeable Li-ion batteries	(4) "AA" batteries
	Certifications	CE, FCC, RoHS	CE, FCC, RoHS	CE, FCC, RoHS
Limited Warranty Term	1 year	1 year	1 year	
<b>SUPPLIED PROBE</b>	Diameter	5.5mm (0.22 in.)	6mm (0.23 in.)	5.5mm (0.22 in.)
	Style	Flexible-Obedient	Articulating	Soft metal
	Length	1m (3.3 ft.)	1m (3.3 ft.)	1m (3.3 ft.)
	Field of View	60°	60°	60°
	Depth of Field	0.25 to 12 in. (6.4 to 300mm)	0.25 to 12 in. (6.4 to 300mm)	0.25 to 12 in. (6.4 to 300mm)
	Resistance to Water/Dust/Oil/Gas	IP67	IP67	IP67
	Light Source	4 adjustable white LEDs	4 adjustable white LEDs	6 adjustable white LEDs: 4 front-facing, 2 side-facing

\*Enables existing DCS1800ART owners to add a Non Articulating Probe or the P16HPART VGA resolution Articulating Probe; DCS1800-TR does not include DCS1800 Receiving Console

**DCS16HPART**  
(see page 12)



**DCS800**  
(see page 16)



**DCS1600**  
(see page 12)



**DCS1100**  
(see page 15)



**DPS16**  
(see page 14)



	Utility recording			4.9mm switchable front/side view probe	Rugged VGA recording
	DCS1600	DCS16HPART	DPS16	DCS1100	DCS800
	High-Performance Recording Video Borescope System	High-Performance Recording Video Borescope System with VGA Resolution Articulating Probe	Pipe & Duct Recording Video Borescope Inspection System	High-Performance Video Borescope System	Rugged High-Performance VGA Recording Video Borescope System
	3.5 in. (89mm)	3.5 in. (89mm)	3.5 in. (89mm)	2.4 in. (61mm)	3.5 in. (89mm)
	-	-	-	-	-
	Video, still images	Video, still images	Video, still images	N/A	Video, still images
	Video: 320 x 240 Still images: 640 x 480	Video: 320 x 240 Still images: 640 x 480	Video: 320 x 240 Still images: 640 x 480	Video: 320 x 240 Still images: 640 x 480	Probe & Display: 320 x 240 Recording: 640 x 480
	2X	2X	2X	1.5X	3X, 5X
	Console: 32° to 140°F (0° to 60°C); Probe: -4° to 140°F (-20° to 60°C)	Console: 32° to 140°F (0° to 60°C); Probe: -4° to 140°F (-20° to 60°C)	Console: 32° to 140°F (0° to 60°C); Probe: 14° to 140°F (-10° to 60°C)	Console: 32° to 140°F (0° to 60°C); Probe: 32° to 131°F (0° to 55°C)	Console: 32° to 140°F (0° to 60°C); Probe: -4° to 140°F (-20° to 60°C)
	4GB	4GB	4GB	-	4GB
	Rechargeable Li-ion battery	Rechargeable Li-ion battery	Rechargeable Li-ion battery	4 "AA" batteries	4 "AA" batteries
	CE, FCC, RoHS	CE, FCC, RoHS	CE, FCC, RoHS	CE, FCC, RoHS	CE, FCC, RoHS
	1 year	1 year	1 year	1 year	1 year
	5.5mm (0.22 in.)	6mm (0.23 in.)	28mm (1.1 in.)	4.9mm (0.19 in.)	5.5mm (0.22 in.)
	Flexible-Obedient	Articulating	Soft metal	Flexible-Obedient, Switchable Front/Side View	Flexible-Obedient
	1m (3.3 ft.)	1m (3.3 ft.)	22m (72 ft.)	1m (3.3 ft.)	1m (3.3 ft.)
	60°	60°	151°	67°	60°
	0.25 to 12 in. (6.4 to 300mm)	0.25 to 12 in. (6.4 to 300mm)	0.4 in. (10mm) to infinity	0.25 to 6 in. (6.4 to 150mm)	0.25 to 12 in. (6.4 to 300mm)
	IP67	IP67	IP68	IP57	IP67
	4 adjustable white LEDs	4 adjustable white LEDs	8 adjustable white LEDs	5 adjustable white LEDs: 3 front-facing, 2 side-facing	4 adjustable white LEDs

**Probe Diameters (actual size)**

●  
**3.9mm (0.15 in.)**

●  
**4.9mm (0.19 in.)**

●  
**5.5mm (0.22 in.)**

●  
**6mm (0.24 in.)**

# HIGH-PERFORMANCE VIDEO SYSTEMS

## Configuration Guide

TOLL FREE (800) 697-8665  
 FAX (212) 431-6499  
 www.generaltools.com



**DCS1800**  
 High-Performance Wireless Recording Video Borescope System (see page 8)



**DCS1800ART**  
 High-Performance Wireless Recording Video Borescope System with Articulating Probe (see page 9)



**DCS1700**  
 The VIPER 1700 Super High-Performance VGA Recording Video Borescope System (see pp. 10, 11)



**DCS1600**  
 High-Performance Wireless Recording Video Borescope System (see page 12)

### SYSTEM CONFIGURATION/PROBE COMPATIBILITY CHART

Probe Model No. (SKU)	PROBE DESCRIPTION				CONSOLES/PROBE CONTROLLER			
	Probe Description	Camera Head Diameter	Probe Length	Depth of Field	DCS1800-TR Wireless Probe Handle/Controller	H16 Handheld Recording Console	H8 Rugged Compact VGA Recording Console	H17 Handheld VGA Recording Console
<b>SUPER HIGH-PERFORMANCE PROBE OPTIONS</b>								
P16181HP	VGA Resolution Probes	5.5mm (0.22 in.)	1m (3.3 ft.)	0.25 to 12 in. (6.4 to 300mm)			✓	
P16182HP			2m (6.6 ft.)					
P16183HP			3m (9.8 ft.)					
P16HPART	VGA Resolution Articulating Probes	6.0mm (0.23 in.)	1m (3.3 ft.)					
P16HP2ART			2m (6.6 ft.)					
P16HP3ART			3m (9.8 ft.)					
<b>HIGH-PERFORMANCE PROBE OPTIONS</b>								
<b>FLEXIBLE-OBEDIENT PROBE OPTIONS</b>								
P16181SR-M	Flexible-Obedient Probes	5.5mm (0.22 in.)	1m (3.3 ft.)	0.25 to 12 in. (6.4 to 300mm)			✓	
P16182SR-M			2m (6.6 ft.)					
P16183SR-M			3m (9.8 ft.)					
<b>SOFT METAL PROBE OPTIONS</b>								
P16ART-1SM	Soft Metal Articulating Probes	6.0mm (0.23 in.)	1m (3.3 ft.)	0.25 to 12 in. (6.4 to 300mm)			✓	
P16ART-2SM			2m (6.6 ft.)					
P16ART-3SM			3m (9.8 ft.)					
P18ART-1SM			1m (3.3 ft.)					
P18ART-2SM			2m (6.6 ft.)					
P18ART-3SM			3m (9.8 ft.)					
P16181SM-M	Soft Metal Probes	5.5mm (0.22 in.)	1m (3.3 ft.)				✓	
P16183SM-M			3m (9.8 ft.)					
P16185SM-M			5m (16 ft.)					
P161810SM-M			10m (32 ft.)					
P161830SM-M			30m (98 ft.)					
RP1618	Reel Stand for 5m, 10m and 30m Soft Metal Probes		N/A				✓	
<b>SPECIALTY PROBE OPTIONS</b>								
P1839-M	Ultra-Slim Flexible-Obedient Probes	3.9mm (0.15 in.)	0.75m (2.5 ft.)	0.25 to 6 in. (6.4 to 150mm)			✓	
P16182-39			2m (6.6 ft.)					
P16183-39			3m (9.8 ft.)					
P1618FS-49	Switchable Front/Side View Flexible-Obedient Probes	4.9mm (0.19 in.)	1m (3.3 ft.)					
P16182-49			2m (6.6 ft.)					
P16183-49			3m (9.8 ft.)					
P16PIP	Pipe & Duct Inspection Probe & Reel Set	28mm (1.1 in.)	22m (72 ft.)	0.4 in. (10mm) to infinity				
<b>ACCESSORIES</b>								
HT1618	Telescoping Rigid Holding Tube for Articulating Probes							✓
PM003	Set of 3 Mirrored Viewing Tips (70°, 90°, 110°) for all 5.5mm probes except the P16181HP, P16182HP and P16183HP			N/A				✓

\*DCS1800-TR (see p. I-23) enables DCS1800ART owners to add a non-articulating probe or the P16HPART, P16HP2ART or P16HP3ART VGA Resolution Articulating Probe; DCS1800-TR does not include the DCS1800 Receiving Console

N/A: Probe is not compatible



**DCS16HPART**  
High-Performance Recording Video Borescope System with VGA Resolution Articulating Probe (see page 13)



**DCS1100**  
High-Performance Borescope System with 4.9mm Switchable Front/Side View Probe (see page 15)



**DCS800**  
Rugged Compact High-Performance VGA Recording Video Borescope System (see page 16)

**DPS16**  
Pipe & Duct Wireless Recording Video Borescope System (see page 14)



### SYSTEM CONFIGURATION/PROBE COMPATIBILITY CHART

Probe Model No. (SKU)	HIGH-PERFORMANCE VIDEO BORESCOPE SYSTEMS							
	DCS1800 Wireless Recording Video Borescope System	DCS1800ART Wireless Recording Borescope System w/ Articulating Probe	DCS1700 The VIPER Super VGA Recording Video Borescope System	DCS1600 Recording Video Borescope System	DCS16HPART High-Performance Recording Video Borescope System with VGA Resolution Articulating Probe	DPS16 Pipe & Duct Recording Video Borescope System	DCS1100 Video Borescope System w/4.9mm Switchable Front/Side View Probe	DCS800 Rugged Compact VGA Recording Video Borescope System
<b>SUPER HIGH-PERFORMANCE PROBE OPTIONS</b>								
P16181HP			<b>INCLUDED</b>					
P16182HP					✓			
P16183HP	✓	*		✓		✓	N/A	✓
P16HPART			✓		<b>INCLUDED</b>			
P16HP2ART					✓			
P16HP3ART								
<b>HIGH-PERFORMANCE PROBE OPTIONS</b>								
<b>FLEXIBLE-OBEDIENT PROBE OPTIONS</b>								
P16181SR-M	<b>INCLUDED</b>	*	✓	<b>INCLUDED</b>		✓	✓	<b>INCLUDED</b>
P16182SR-M	✓		✓	✓				✓
P16183SR-M								
<b>SOFT METAL PROBE OPTIONS</b>								
P16ART-15M			✓		✓		✓	✓
P16ART-25M	N/A	N/A						
P16ART-35M								
P18ART-15M		<b>INCLUDED</b>						
P18ART-25M	✓	✓	N/A		N/A		N/A	N/A
P18ART-35M								
P16181SM-M								
P16183SM-M								
P16185SM-M	✓	*	✓		✓		✓	✓
P161810SM-M								
P161830SM-M								
RP1618	✓	*	✓		✓		✓	✓
<b>SPECIALTY PROBE OPTIONS</b>								
P1839-M							✓	
P16182-39								
P16183-39	✓	*	✓		✓			✓
P1618FS-49							<b>INCLUDED</b>	
P16182-49							✓	
P16183-49								
P16PIP		✓	✓		✓	<b>INCLUDED</b>	N/A	✓
<b>ACCESSORIES</b>								
HT1618		✓						
PM003	✓	*	✓		✓		✓	✓

## High-Performance Wireless Recording Video Borescope System

Features slim 5.5mm diameter probe, 3.5 in. color monitor and powerful ability to record video, still images and sound. Thinner, longer, multi-view and articulating probes available.

### APPLICATIONS:

- Government, Military, Security
- Infrastructure Inspection and Maintenance
- Aircraft Maintenance and Inspection
- Automotive Maintenance
- MRO / Industrial Inspection
- Inspection of Complex Machinery
- Oil, Power and Petro Industry Inspection Applications
- Inspection of Tooling Dies

### FEATURES:

- 3.5 in. (89mm) extra-wide, color TFT monitor with super sharp clarity
- Records audio, video and still images with instant playback review
- Wireless image and video transfer
- Comes with a 1m (3.28 ft.) long x 5.5mm (0.22 in.) diameter QVGA resolution probe that retains its configured shape. Depth of field is 0.25 to 12 in. (6.4 to 300mm)
- Optional probes include: 3.9mm diameter, 4.9mm switchable front/side view, and 6mm VGA articulating and non-articulating probes of 1m, 2m and 3m length
- All probes feature at least 4 adjustable-brightness white LEDs for superior camera lighting
- All probes are water, oil, dust and scratch resistant to IP67 standard
- 3 interchangeable mirrored viewing tips provide extra-wide viewing angles of 70°, 90°, 110°
- Multiple language menu
- AV out allows for TV monitor and computer interfaces
- Rechargeable Lithium-ion batteries



DCS1800



### BENEFITS:

- Wireless imaging allows inspection results to be sent to a larger screen up to 33 ft. (10m) away for team-based analysis
- Wireless camera probe enables access to otherwise inaccessible places
- Ultra slim probes with powerful video camera and LED lights in the tip enable user to inspect the tiniest spaces
- Optional 3.9mm (0.15 in.) diameter camera tipped probe is the slimmest on the market and can fit into the spark plug hole of any engine, as well as into diesel injector ports
- View findings in real time or record video and still images for viewing and sharing later
- Rechargeable batteries can record for 4 hours and will help you stay "Green"



### INCLUDES:

Custom Hard Case, 5.5mm Diameter x 1m Long Flexible-Obedient Probe, 2GB SD Card, RCA Cable, 3 Interchangeable Mirrored Viewing Tips (70°, 90°, 110°), LCD Cleaning Cloth, AC Adaptor/Charger, 2 Rechargeable Batteries, User's Manual, 1 Year Limited Warranty

UPC	NO.
01297 0	DCS1800

### DCS1800, DCS1800ART Specifications:

**DCS1800 comes with:** 5.5mm (0.22 in.) Diameter x 1m (3.28 ft.) long QVGA resolution probe  
**DCS1800ART comes with:** 6mm (0.24 in.) Diameter x 1m (3.28 ft.) long articulating QVGA resolution probe  
**Depth of Field (DOF):** 0.25 to 12 in. (6.4 to 300mm)  
**Probe Feature:** Water, Oil & Dust resistant to IP67 standards

**Field of View:** Horizontal field angle 46°  
 Vertical field angle 34° Diagonal field angle 56°

**Optional 5.5mm Probe Lengths:**  
 2m, 3m, 5m, 10m, 30m

#### Other Optional Probes:

- 3.9mm diameter ultra-slim probe of 1m, 2m or 3m length
- 4.9mm diameter switchable front/side view probe of 1m, 2m or 3m length
- 6.0mm diameter VGA resolution articulating or non-articulating probe of 1m, 2m or 3m length

**Display:** 3.5 in. (88.9mm) Color TFT

**Recording Resolution:** 320 x 240 pixels (video); 640 x 480 pixels (still images)

**Audio:** Integrated microphone (DCS1800 only)

**Wireless Transceiver Frequencies:** 2414MHz, 2432MHz, 2450MHz, 2468MHz

**System Power:** Battery: Rechargeable Li-Polymer Battery (3.7V) Adaptor/Charger Supply: 120VAC @ 60 Hz or 240VAC @50 Hz

**Power Consumption:** 1.8A @5.5VDC

**Recording Medium:** 2GB SD Card



### High-Performance Wireless Recording Video Borescope System with Articulating Probe



CE FC RoHS

DCS1800ART

**APPLICATIONS:**

Ideal for aircraft maintenance, machinery and production line inspection, petro-chemical and power plant inspection, general MRO and facility management

**FEATURES:**

- One-handed articulation function allows user to turn the probe tip to inspect targets located at sides or at an angle while it is inside a tight space
- Turning knob and lock button are ergonomically engineered
- Durable materials and construction: all components pass 60,000 cycle test

**SPECIFICATIONS:**

**Articulation Angle:** 2 way  
**Articulation Sweep:** 0 to ±150°  
**Supplied Probe:** 6mm (0.23 in.) diameter x 1m (3.28 ft.) long, articulating soft metal probe

UPC	NO.
01417 2	DCS1800ART



The articulating probe's ±150° viewing angle enhances inspection flexibility

**DCS1800, DCS1800ART Specifications (continued):**

**Video Out Format:** NTSC and PAL

**Interface:** AV Out

**Compression Format:** Compliant with MPEG4

**Image Resolution:** 640 x 480 Pixels

**Video Resolution:** 320 x 240 Pixels

**Frame Rate:** ~30 fps

**Exposure:** Automatic

**White Balance:** Fixed

**S/N Ratio:** 42dB or more

**Languages:** English, German, French, Spanish, Japanese, Italian, Traditional Chinese, Simplified Chinese

**Operating Temperature:** 32° to 140°F (0° to 60°C) for console; -4° to 140°F (-20° to 60°C) for probe

**Storage Temperature:** 32° to 140°F (0° to 60°C)

**Interchangeable Options:**

**Set of 3 Mirrored Viewing Tips For All 5.5mm Probes except P16181/2/3HP**  
 No. PM003 (70°, 90°, 110°)

# VGA Recording Video Borescope System

## Super High-Performance VGA Recording Video Borescope System

**THE VIPER 1700** is a rugged, lightweight, high-performance, VGA resolution recording borescope system that is ideal for making high-quality video and photo inspections of inaccessible or hard-to-see areas of vehicles, environments and industrial equipment

### FEATURES & BENEFITS:

- Records VGA resolution (640 x 480 pixel) video clips and still images
- Probe features light boost, anti-reflection and screen rotation buttons
- Camera lighting provided by 4 front-facing LEDs
- To minimize glare from shiny targets, lighting can be shifted to 2 angled LEDs
- Console features brightness controls, horizontal mirroring, 2X zoom, and slow-motion and fast-forward video playback
- Object measurement mode
- Console accepts dozens of different length and diameter probes
- Probe and stainless steel camera head are IP67 water, oil and dust-proof
- Dual output jacks enable before/after image comparisons
- Auto Power Off is time adjustable
- Includes 4GB SD memory card, video and USB cables and hard case

# 5.5mm Diameter VGA Resolution Probe



Use for routine, onsite pipe and duct inspections



Ideal for identifying safety problems on aircraft engines and heavy equipment



Rugged and outdoor-ready for the most challenging environments

DCS1700

## THE VIPER 1700

Ideal for inspecting inaccessible or hard-to-see areas.

### SPECIFICATIONS:

- Display Size/Type:** 3.5 in. (diagonal), color TFT LCD
- Display Resolution:** 320 x 240 pixels (QVGA)
- Video/Photo Recording Resolution:** 640 x 480 pixels (VGA)
- Video/Photo File Format:** .avi/.jpg
- Video Zoom Options:** 1.5X, 2X
- Video Playback Speeds:** 12%, 25%, 50%, 1X, 1.5X, 2X, 4X
- Video Out Formats:** NTSC and PAL
- Video Frame Rate:** 30 frames per second (fps)
- Camera Lighting:** 4 forward-facing LEDs + 2 angled LEDs
- Supplied Probe:**  
5.5mm (0.22 in.) diameter, 1m (39 in.) long, soft metal
- Probe Depth of Field:** 0.25 to 12 in. (6.4 to 300mm)
- Probe Field of View:** 60°
- Interfaces:** Video Out & USB 2.0 jacks
- Recording Medium:**  
Standard-size SD card of up to 32GB capacity
- Menu Languages:** English, French, German, Italian, Spanish, and Portuguese, as well as 21 other European and Asian languages
- Operating/Storage Temperatures:**  
Probe: -4° to 140°F (-20° to 60°C)  
Console: 32° to 122°F (0° to 50°C)
- Dimensions of Grip:**  
10.8 x 4.8 x 2.2 in. (275 x 123 x 55mm)
- Weight of Grip (without Batteries):** 13 oz. (370g)
- Power Source:** 4 "AA" Alkaline batteries (included)
- Battery Life (typical):** 4 hours operation
- Optional Power Source:**  
Rechargeable Ni-MH or Li-ion "AA" batteries



P16181HP  
VGA Resolution Probe  
(see page I-25)  
features light boost,  
anti-reflection and  
image rotation buttons

Comfortable,  
lightweight,  
rugged and  
ergonomic  
console



### INCLUDES:

Console, VGA Resolution Probe, 4GB SD Memory Card, Object Measuring Tip, 110° Mirrored Viewing Tip, Video Cable, USB Cable, 4 "AA" Alkaline Batteries, LCD Cleaning Fluid and Cloth, Custom Hard Case, User's Manual and 1 Year Limited Warranty

UPC	NO.
01601 5	DCS1700



Saves time and money in automotive  
maintenance and repair



# High-Performance Recording Video Borescope System

Features slim 5.5mm diameter probe, 3.5 in. color monitor and powerful recording capability. Thinner, longer, multi-view and articulating probes available.

**APPLICATIONS:**

- Aircraft Maintenance and Inspection
- Military, Security, Law Enforcement
- Automotive / Diesel Maintenance
- Other High Level Inspection

**FEATURES:**

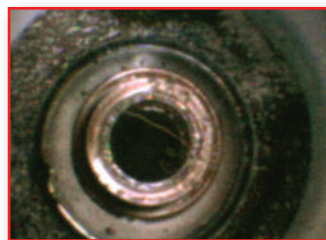
- 3.5 in. (89mm) extra-wide, color TFT monitor with super sharp clarity
- Records video and still images with instant playback review
- Comes with a 1 m (3.28 ft.) long, 5.5mm (0.22 in.) diameter, QVGA resolution probe that retains its configured shape. Depth of field is 0.25 to 12 in. (6.4 to 300mm)
- Optional probes include: 3.9mm diameter, 4.9mm switchable front/side view, and 6mm diameter VGA and QVGA articulating and non-articulating probes of 1m, 2m and 3m length
- All probes feature at least 4 adjustable-brightness white LEDs for superior camera lighting
- All probes are water, oil, dust and scratch resistant to IP67 standard
- 3 interchangeable mirrored viewing tips provide extra wide viewing angles of 70°, 90°, 110°
- Multiple language menu
- TV monitor and USB computer interfaces
- Rechargeable Lithium-ion battery

**BENEFITS:**

- Ultra-slim probes with powerful video camera and LED lights in the tip enable access to otherwise inaccessible places
- Optional 3.9mm (0.15 in.) diameter camera-tipped probe is the slimmest on the market and can fit into the spark plug hole of any engine, as well as into diesel injector ports
- View findings in real time or record video and still images for viewing and sharing later
- Rechargeable batteries can record for 4 hours and will help you stay “Green”



**DCS1600**



**INCLUDES:**

Custom Hard Case, 5.5mm Diameter x 1m Long Flexible-Obedient Probe, 2GB SD Card, RCA Cable, USB Cable, 3 Interchangeable Mirrored Viewing Tips (70°, 90°, 110°), LCD Cleaning Cloth, AC Adaptor/Charger, Rechargeable Battery, User's Manual, 1 Year Limited Warranty

UPC	NO.
01305 2	DCS1600

**DCS1600, DCS16HPART Specifications:**

**DCS1600 comes with:** 5.5mm (0.22 in.) diameter x 1m (3.28 ft.) long QVGA resolution probe (P16181SR-M)

**DCS16HPART** comes with 6mm (0.24 in.) diameter x 1m (3.28 ft.) long VGA resolution articulating probe (P16HPART)

**Depth of Field (DOF):** 0.25 to 12 in. (6.4 to 300mm)

**Probe Feature:** Water, Oil & Dust resistant to IP67 standard

**Field of View:** 60°

**Optional 5.5mm Probe Lengths:** 2m, 3m, 5m, 10m, 30m

**Other Optional Probes:**

- 3.9mm diameter ultra-slim probe of 0.75, 2m or 3m length
- 4.9mm diameter switchable front/side view probe of 1m, 2m or 3m length

**Display:** 3.5 in. (89mm) Color TFT

**Recording Resolution:** 320 x 240 pixels (video); 640 x 480 pixels (still images)

**System Power:** Battery: Rechargeable Li-Polymer Battery (3.7V) Adaptor/Charger Supply: 120VAC @ 60 Hz or 240VAC @50 Hz

**Power Consumption:** 1.8A @5.5VDC

**Recording Medium:** 4GB SD Card

## High-Performance Recording Video Borescope System with VGA Resolution Articulating Probe

CE RoHS

**APPLICATIONS:**

Ideal for aircraft maintenance, machinery and production line inspection, petro-chemical and power plant inspection, general MRO and facility management

**FEATURES:**

- One-handed articulation function allows user to turn the probe tip to inspect targets located at sides or at an angle while it is inside a tight space
- Turning knob and lock button are ergonomically engineered
- Durable materials and construction: all components pass 60,000 cycle test

**SPECIFICATIONS:**

**Articulation Angle:** 2 way

**Articulation Sweep:** 0 to  $\pm 155^\circ$

**Supplied Probe:** 6mm (0.23 in.) diameter x 1m (3.28 ft.) long VGA resolution articulating soft metal probe with light boost and anti-reflection (P16HPART)

UPC	NO.
01626 8	<b>DCS16HPART</b> —Combines the DCS1600 handheld recording console (H16, see p. I-23) and the 1m long P16HPART VGA resolution articulating probe (see p. I-24).



**DCS16HPART**

The articulating probe's  $\pm 155^\circ$  viewing angle enhances inspection flexibility

**DCS1600, DCS16HPART Specifications (continued):**

**Video Out Format:** NTSC and PAL

**Interface:** AV Out and USB removable SD card

**Compression Format:** Compliant with MPEG4

**Image Resolution:** 640 x 480 Pixels

**Video Resolution:** 320 x 240 Pixels

**Frame Rate:** ~30 fps

**Exposure:** Automatic

**White Balance:** Fixed

**S/N Ratio:** 42dB or more

**Languages:** English, German, French, Spanish, Japanese, Italian, Traditional Chinese, Simplified Chinese

**Operating Temperature:** 32° to 140°F (0° to 60°C) for console; -4° to 140°F (-20° to 60°C) for probe

**Storage Temperature:** 32° to 140°F (0° to 60°C)

**Interchangeable Options:**

**Set of 3 Mirrored Viewing Tips For All 5.5mm Probes except P16181/2/3HP**  
No. PM003 (70°, 90°, 110°)

## Pipe & Duct Recording Borescope

TOLL FREE (800) 697-8665  
 FAX (212) 431-6499  
 www.generaltools.com

### PIPE & DUCT VIDEO INSPECTION SYSTEM – DPS16

Ideal for examining the interior of 2, 4 and 6 inch I.D. water and sewer pipes with the included probe centering accessories.

#### FEATURES & BENEFITS:

- 72 ft. (22m) long probe with 28mm (1.1 in.) diameter camera head
- Eight super-bright white LEDs give probe 640 x 480 pixel (VGA) resolution; superior optics yield excellent depth of field of 0.4 in. (10mm) to infinity
- Includes H16 Handheld Recording Video Borescope Console
- Probe is water-tight to IP68 standard (depth of 50 ft./10m) and is flexible enough to make two 90° bends
- Stainless steel camera head is immune to bathroom toilet cleaner, unleaded gasoline, brake/transmission fluid and machine oil
- Steel probe reel is sturdy and dust-tight to IP65 standard. Reel works vertically or horizontally and includes IP55-rated probe length counter and bracket for H16 (DCS1600) console

#### INCLUDES:

- P16PIP Pipe & Duct Inspection Probe & Reel Set (includes probe length counter and brushes for centering probe in 2 in., 4 in. and 6 in. inner diameter pipes)
- Handheld Recording Video Borescope Console (General Part No. H16)
- 4GB SD memory card
- RCA cable for viewing video and images on an NTSC monitor
- AC adaptor/battery charger and cleaning cloth and liquid for the console
- Custom hard carrying case
- User's manual
- 1-Year Limited Warranty

#### SPECIFICATIONS:

- ◆ **Camera-Tipped Probe:**
  - Camera Head Diameter: 1.1 in. (28mm)
  - Light Source: 8 white LEDs
  - Depth of Field: 0.4 in. (10mm) to infinity
  - Field of View: 150.8° (diagonal)
  - Diameter: 6mm (0.23 in.)
  - Length: 72 ft. (22m)
  - Material: Fiberglass
  - Minimum Bending Radius: 6 in. (150mm)
  - Waterproof Depth (IP68): 50 ft. (10m)
  - Operating Temperature: 14° to 140°F (-10° to 60°C)

#### Reel:

- Frame Diameter: 11.8 in. (300mm)
- Dust and Water Resistance: To IP65 standard
- Weight: 6.6 lb. (3kg)

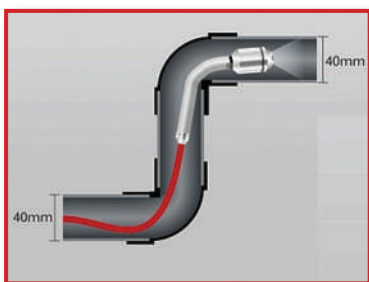
#### INCLUDED ACCESSORIES:

- Probe Centering Ring:
  - Inner Diameter: 1.1 in. (28mm)
  - Outer Diameter: 2 in. (50mm)
- Small Probe Centering Brush:
  - Inner Diameter: 1.1 in. (28mm)
  - Outer Diameter: 4 in. (100mm)
- Large Probe Centering Brush:
  - Inner Diameter: 1.1 in. (28mm)
  - Outer Diameter: 6 in. (150mm)

UPC	NO.
01597 7	DPS16
01578 0	P16PIP



DPS16



Eight super-bright white LEDs give the DPS16/ P16PIP probe 640 x 480 pixel (VGA) resolution



The DPS16/P16PIP probe is flexible enough to make two 90° bends in a 1.6 in. (40mm) diameter pipe



**P16PIP**  
 Probe, reel, ring and brushes are available separately as P16PIP.



A packaged DPS16 system



A probe's-eye view of a filthy air-conditioning duct

## Video Borescope System w/4.9mm Probe

### HIGH-PERFORMANCE VIDEO BORESCOPE SYSTEM WITH 4.9mm DIAMETER SWITCHABLE FRONT/SIDE VIEW PROBE – DCS1100

#### FEATURES & BENEFITS:

- Super-slim 4.9mm (0.19 in.) diameter switchable probe enables user to toggle between front and side views with the push of a button in a narrow space
- Overmolded console with ergonomic construction provides extra ruggedness and comfortable grip
- Rotate the probe when it's in side view mode to get a 360° view
- Minimum focal distance of 0.25 in. (6.4mm) enables extreme close-up viewing
- Console also accepts any of General's QVGA (320 x 240 pixel) resolution borescope probes, including the ultra-slim 3.9mm (0.15 in.) diameter probe

#### SPECIFICATIONS:

##### CONSOLE:

- ◆ Display:
  - Type: Thin-film transistor (TFT) liquid crystal;
  - Size: 2.4 in. (61mm) diagonal
  - Resolution: 320 x 240 pixels
- ◆ Estimated Battery Life: 8 hours
- ◆ Operating Temperature: 32° to 140°F (0° to 60°C)
- ◆ Dimensions: 3.68 x 8.25 x 2.26 in. (93.5 x 209.5 x 57.5mm)
- ◆ Weight (w/battery): 12.6 oz. (357g)
- ◆ Power Source: 4 "AA" batteries (included)
- ◆ Approvals: CE, RoHS

##### PROBE:

- ◆ Diameter: 0.19 in. (4.9mm)
- ◆ Length: 39 in. (1m)
- ◆ Operating Temperature: 32° to 131°F (0° to 55°C)
- ◆ Dust/Water Resistance: To IP57 standard
- ◆ Head Material: Stainless steel
- ◆ Minimum Focal Distance: 1/4 in. (6.4mm)
- ◆ Depth of Field:
  - Horizontal Field Angle: 45.2°
  - Vertical Field Angle: 34°
  - Diagonal Field Angle: 56°
- ◆ Light Source: 3 front-facing and 2 side-facing adjustable-intensity white LEDs, each w/ luminous intensity of 140 to 224 mcd (millicandelas)
- ◆ Weight: 15 oz. (425g)

#### APPLICATIONS:

- Inspecting cylinders, valves, diesel injectors and glow port plugs
- Looking behind body panels and under the dashboard to optimize cable routing
- Checking for corrosion and wear in hard-to-see areas
- Inspecting fluid lines for leaks

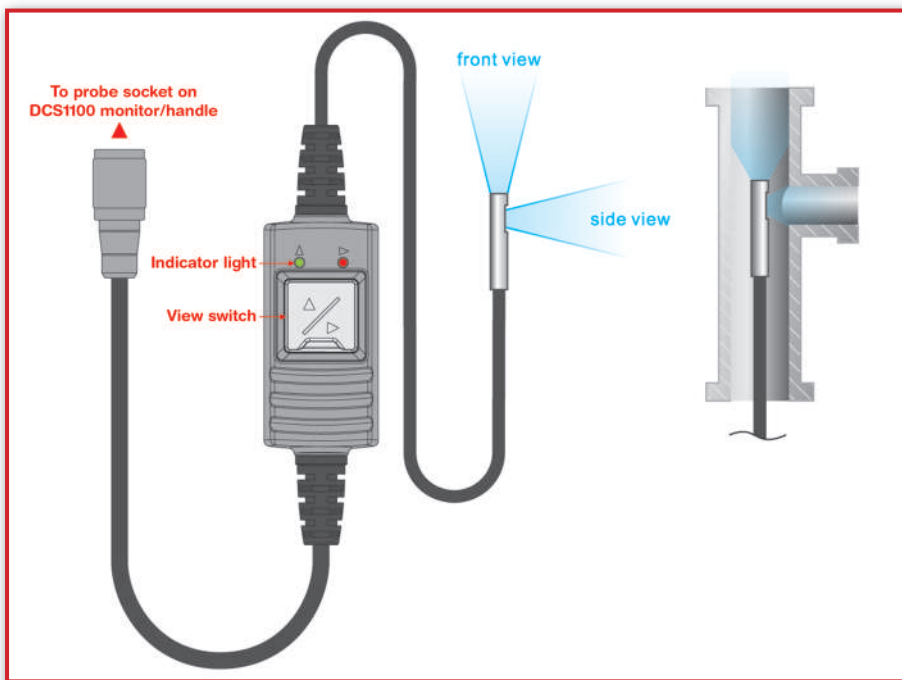
#### INCLUDES:

Console, 1m Long x 4.9mm Diameter Switchable Front/Side View Probe, 4 "AA" Batteries, Hard Carrying Case, User's Manual and 1 Year Limited Warranty



DCS1100

UPC	NO.
01512 4	DCS1100



Rotating the probe gives the side view camera full 360° coverage of the inside of a pipe - like a submarine periscope scanning the horizon

### 4.9mm DIAMETER SWITCHABLE FRONT/SIDE VIEW PROBES – P1618FS-49, P16182-49, P16183-49

#### FEATURES:

- Super-slim probe features 2 separate cameras, each with its own built-in light source
- Switchable dual views allow for straight-on and 90° viewing with full 360° rotational viewing
- Minimum focal distance of 1/4 in. (6.4mm) allows for extremely close-up viewing
- 4.9mm (0.193 in.) diameter x 1m (3.28 ft.) long probe is water, oil, dust and scratch resistant to IP57 standard
- The probe is flexible-obedient, meaning it retains its configured shape

UPC	NO.
01481 3	P1618FS-49 (1m long)
01553 7	P16182-49 (2m long)
01554 4	P16183-49 (3m long)



P1618FS-49  
P16182-49  
P16183-49

# Rugged VGA Recording Borescope



DCS800

## RUGGED COMPACT HIGH-PERFORMANCE VGA RECORDING VIDEO BORESCOPE SYSTEM – DCS800

Ideal for inspecting hard-to-reach and hard-to-see areas.

### FEATURES & BENEFITS:

- 3.5 in. (89mm) diagonal color LCD
- 1m, (39 in.) long, 5.5mm, (0.22 in.) diameter flexible-obedient probe with 320 x 240 pixel (QVGA) resolution camera lit by four LEDs
- Probe and stainless steel camera head are IP67 water, oil and dust-proof. Console is rated IP55 and 1m (39 in.) drop-proof
- Console accepts dozens of other QVGA and VGA (640 x 480 pixel) resolution probes of various lengths and diameters
- Records VGA or QVGA resolution video clips and still images using familiar menu-driven user interface. Saved video and photo files incorporate real-time brightness, zoom and mirroring adjustments made prior to recording or “on the fly”
- Three options for mirroring live video: horizontal, vertical, or both
- 4GB SD memory card
- Analog video out jack and cable with RCA plug
- USB cable for uploading/viewing media on SD card to PC without ejecting card
- 90° mirrored probe viewing tip
- Adjustable Auto Power Off interval
- Choice of 27 menu languages
- Custom hard plastic carrying case
- Powered by four “AA” Alkaline or rechargeable batteries

### SPECIFICATIONS:

- ◆ Display Resolution: 320 x 240 pixels (QVGA)
- ◆ Diameter of Camera Head with Thread Protector: 6mm (0.23 in.)
- ◆ Probe Depth of Field: 0.25 to 12 in. (6.4 to 300mm)
- ◆ Probe Field of View: 60°
- ◆ Video File Format: .avi
- ◆ Photo File Format: .jpg
- ◆ Video Zoom Options: 3.0X, 5.0X
- ◆ Video Out Formats: NTSC and PAL
- ◆ Video Frame Rate: 30 frames per second (fps)
- ◆ Compression Format: Compatible with MPEG4
- ◆ Probe Operating/Storage Temperature: -4° to 140°F (-20° to 60°C)
- ◆ Console Operating Temperature: 32° to 140°F (0° to 60°C)
- ◆ Dimensions of Console: 5.5 x 4.6 x 1.7 in. (140 x 116 x 42mm)
- ◆ Weight of Console (without Batteries): 10.6 oz. (300g)
- ◆ Power Source: (4) “AA” Alkaline or rechargeable Ni-MH batteries
- ◆ Battery Life (typical): 4 hours operation

UPC	NO.
01628 2	DCS800

### INCLUDES:

Console, 5.5mm Diameter x 1m Long QVGA Resolution Flexible-obedient Probe, 90° Mirrored Viewing Tip and Thread Protector Ring, 4GB SD Memory Card, AV and USB Cables, (4) “AA” Alkaline Batteries, Adjustable Hand Strap, Custom Hard Plastic Carrying Case, User’s Manual, 1 Year Limited Warranty



Few borescopes can handle the harsh military maintenance environment like the 1m drop-proof IP55 DCS800



Inspection of hard-to-reach and hard-to-see areas



Inspecting a densely packed aircraft engine requires a thin probe and high-quality optics. The DCS800 has both.



The DCS800 will give any professional garage — including this one for Formula 1 cars — the racer’s edge when it comes to inspection



## Borescope Consoles & Probe Controller

### DCS1600 HANDHELD RECORDING CONSOLE – H16

Add any QVGA (320 x 240 pixel) or VGA (640 x 480 pixel) resolution probe from General to create a high-performance video borescope inspection system.

#### FEATURES & BENEFITS:

- 3.5 in. (89mm) extra-wide, color TFT monitor with super sharp clarity
- Records video and still images with instant playback
- Optional probes include: 3.9mm diameter, 4.9mm switchable front/side view, and 6mm diameter VGA and QVGA articulating and non-articulating probes of 1m, 2m and 3m length
- All probes feature at least 4 adjustable-brightness white LEDs for superior camera lighting
- All probes are water, oil, dust and scratch resistant to IP67 standard

- 3 interchangeable mirrored viewing tips provide extra wide viewing angles of 70°, 90°, 110°
- Multiple language menu
- TV monitor and USB computer interfaces
- Rechargeable internal battery

#### INCLUDES:

2GB SD Card, Video and USB Cables, Rechargeable Li-ion Battery, AC Adaptor/Charger, Custom Protective Hard Case, User's Manual, 1 Year Limited Warranty

UPC	NO.
01580 3	H16



CE  
RoHS



H16

### WIRELESS PROBE HANDLE/CONTROLLER – DCS1800-TR

Makes a DCS1800ART system compatible with a non-articulating probe or the P16HPART, P16HP2ART or P16HP3ART VGA Resolution Articulating Probe. (Does not include the DCS1800 Receiving Console.)

#### INCLUDES:

1 Year Limited Warranty

UPC	NO.
01475 2	DCS1800-TR



CE  
FC  
RoHS

DCS1800-TR

### HANDHELD VGA RECORDING CONSOLE – H17

Add any QVGA (320 x 240 pixel) or VGA (640 x 480 pixel) resolution probe from General to create a high-performance video borescope inspection system.

#### FEATURES & BENEFITS:

- 3.5 in. (89mm) diagonal color LCD
- Records VGA resolution (640 x 480 pixel) video clips and still images
- Controls for camera lighting, horizontal mirroring, 2X zoom, and slow-motion and fast-forward video playback
- Object measurement mode
- Accepts dozens of different length and diameter probes. Optional probes include: 3.9mm diameter, 4.9mm switchable front/side view, and 6mm diameter VGA and QVGA articulating and non-articulating probes of 1m, 2m and 3m length

- Dual output jacks enable before/after image comparisons
- Adjustable Auto Power Off trigger

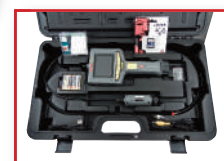
#### INCLUDES:

4GB SD Memory Card, Object Measuring Tip, 110° Mirrored Viewing Tip, AV and USB Cables, 4 "AA" Alkaline Batteries, LCD Cleaning Fluid and Cloth, Custom Hard Case, User's Manual, 1 Year Limited Warranty

UPC	NO.
01648 0	H17



CE  
RoHS



H17

### RUGGED COMPACT VGA RECORDING CONSOLE – H8

Add any QVGA (320 x 240 pixel) or VGA (640 x 480 pixel) resolution probe from General to create a high-performance video borescope inspection system.

#### FEATURES & BENEFITS:

- 3.5 in. (89mm) diagonal color LCD
- Records VGA or QVGA resolution video clips and still images using familiar menu-driven user interface. Saved video and photo files incorporate real-time brightness, zoom and mirroring adjustments made prior to recording or "on the fly"
- Water, oil and dust-proof to IP55 standard and 1m (39 in.) drop-proof
- Accepts dozens of different length and diameter probes. Optional probes include: 3.9mm diameter, 4.9mm switchable front/side view, and 6mm diameter VGA and QVGA articulating and non-articulating probes of 1m, 2m and 3m length

- Three options for mirroring live video: horizontal, vertical, or both
- Analog video out jack and cable with RCA plug
- Adjustable Auto Power Off interval
- Choice of 27 menu languages

#### INCLUDES:

Console, 90° Mirrored Viewing Tip, 4GB SD Memory Card, AV and USB Cables, (4) "AA" Alkaline Batteries, Adjustable Hand Strap, Custom Hard Plastic Carrying Case, User's Manual, 1 Year Limited Warranty

UPC	NO.
01647 3	H8



H8

# VGA Resolution Articulating Probes

## VGA RESOLUTION ARTICULATING PROBES W/ LIGHT BOOST AND ANTI-REFLECTION – P16HPART, P16HP2ART, P16HP3ART

Ideal for capturing high-quality (640 x 480 pixel) video and images of hard-to-reach or hard-to-see areas and equipment. Light boost, anti-reflection and image flip functions extract clear images from even the darkest spaces.

**FEATURES & BENEFITS:**

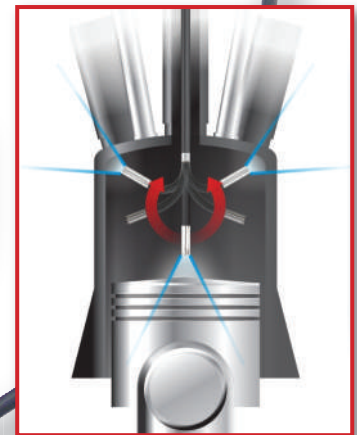
- Five super-bright white LEDs support 640 x 480 pixel (VGA) resolution video and still images
- 6mm (0.23 in.) diameter probe goes deep into tight spaces
- Probe articulates 155° up and 155° down with radius of 50 ± 5mm
- Light boost, anti-reflection and 90° image rotation buttons on handle
- Superior optics tailored for close-focus viewing from 0.25 in. to 12 in. (6.4 to 300mm) over 87° (diagonal) field of view
- 0.9 in. (23mm) long stainless steel camera head is immune to bathroom toilet cleaner, unleaded gasoline, diesel fuel, brake/transmission fluid and machine oil
- Probe is dust/waterproof to IP67 standard
- **Dimensions of Handle:**  
5.47 x 1.38 x 1.26 in.  
(139 x 35 x 32mm)
- **Weight:** 7.76 oz. (220g)

UPC	NO.
01579 9	<b>P16HPART</b> (1m long)
01621 3	<b>P16HP2ART</b> (2m long)
01622 0	<b>P16HP3ART</b> (3m long)



**P16HPART  
 P16HP2ART  
 P16HP3ART**

Compatible with all high-performance video borescope consoles, probe controllers and systems (except the DCS1100)



The 310° sweep of the articulating head makes it possible to view areas "behind" the probe tip



An articulating probe is a must for inspecting densely packed aircraft engines



Before pressing light button (with mirror)



After pressing light button (with mirror)

The anti-reflection function of General's VGA resolution probes

### VGA RESOLUTION PROBES W/ LIGHT BOOST AND ANTI-REFLECTION – P16181HP, P16182HP, P16183HP

Ideal for capturing high-quality (640 x 480 pixel) video and images of hard-to-reach or hard-to-see areas and equipment. Light boost, anti-reflection and image flip functions extract clear images from even the darkest spaces.

#### FEATURES & SPECIFICATIONS:

- Six super-bright white LEDs support 640 x 480 pixel (VGA) resolution video and still images
- 5.5mm (0.22 in.) diameter probe goes deep into tight spaces
- Light boost, anti-reflection and 90° image rotation buttons on handle
- Superior optics tailored for close-focus viewing from 0.25 in. to 12 in. (6.4 to 300mm) over 60° (diagonal) field of view
- 0.78 in. (20mm) long stainless steel camera head is immune to bathroom toilet cleaner, unleaded gasoline, diesel fuel, brake/transmission fluid and machine oil
- Probe is dust/waterproof to IP67 standard
- Dimensions of Handle: 5.47 x 1.38 x 1.26 in. (139 x 35 x 32mm)
- Weight: 7.76 oz. (220g)

UPC	NO.
01576 6	<b>P16181HP</b> (1m long)
01644 2	<b>P16182HP</b> (2m long)
01645 9	<b>P16183HP</b> (3m long)



Compatible with all high-performance video borescope consoles, probe controllers and systems (except the DCS1100)



The VGA probes' four forward-facing LEDs and two rear-facing LEDs make the darkest crawl space as bright as day



Before Boosting



Clear Image after Boosting

The light boost function of General's VGA resolution probes

P16181HP  
P16182HP  
P16183HP

# The SEEKER™ Video Inspection Systems

From our affordable DCS050 to our feature-packed SEEKER™ 400 Series, this line of camera scopes is designed to appeal to everyone from experienced automotive mechanics and HVAC/R technicians to DIY weekend warriors.



**DCS350**  
(see page 22)



**DCS400 Series**  
(see page 26)



**DCS300 Series**  
(see page 25)



**DCS280**  
(see page 23)



**DCS200 Series**  
(see page 25)

	PRIMARY SYSTEM FEATURES	Rugged Recording	Rugged Non-recording	
	<b>SYSTEM</b>	Model No.	DCS350	DCS280
System Name		The SEEKER™ 350 Rugged Recording Video Inspection System	The SEEKER™ 280 Rugged Video Inspection System	
Display		3.5 in. color LCD	2.4 in. color LCD	
Records		Video and Still Images	—	
Resolution (pixels)		Camera probe: 640 x 480 Monitor: 320 x 240	Camera probe: 640 x 480 Monitor: 320 x 240	
Video Controls		4X Zoom, 180° rotation	2X Zoom, 180° rotation	
Memory (capacity of included SD card)		2GB + 64MB Internal Flash Memory	—	
Power Source		4 "AA" Batteries	4 "AA" Batteries	
Limited Warranty Term	3 years	3 years		
<b>SUPPLIED PROBE</b>	Diameter	12mm	9mm	
	Type	Flexible-Obedient	Flexible-Obedient	
	Length	1m (3.28 ft.)	1m (3.28 ft.)	
	Field of View	60°	60°	
	Depth of Field	1 to 12 in.	1 in. to 10 ft.	
	Resistance to Water and Dust	IP67 (Probe only) Unit is 1m drop-proof	IP67 (Probe only) Unit is 1m drop-proof	
	Light Source, Lens Material, Camera Head Material	2 LEDs, Plastic	4 LEDs, Glass, Anodized Aluminum	

# The SEEKER™ Video Inspection Systems

## Probe Options for The SEEKER™ Video Inspection Systems



**DCS100**  
(see page 2)

Model No.	UPC	Diameter	Length	Description
P230-1	01386 1	12mm (0.47 in.)	1m (3.28 ft.)	Flexible-Obedient Probe - Close Focus*1
P230-1F	01474 5	12mm (0.47 in.)	1m (3.28 ft.)	Flexible-Obedient Probe - Far Focus*2
P230-1X	01387 8	12mm (0.47 in.)	1m (3.28 ft.)	Flexible-Obedient Probe Extension
P230-2X	01390 8	12mm (0.47 in.)	2m (6.6 ft.)	Flexible-Obedient Probe Extension
P230-3X	01391 5	12mm (0.47 in.)	3m (9.8 ft.)	Flexible-Obedient Probe Extension
P495-1N	01423 3	9mm (0.35 in.)	1m (3.28 ft.)	Flexible-Obedient Probe
P495-2N	01467 7	9mm (0.35 in.)	2m (6.6 ft.)	Flexible-Obedient Probe
P495-3N	01468 4	9mm (0.35 in.)	3m (9.8 ft.)	Flexible-Obedient Probe
P455-1N	01466 0	5.5mm (0.22 in.)	1m (3.28 ft.)	Flexible-Obedient Probe
P455-2N	01469 1	5.5mm (0.22 in.)	2m (6.6 ft.)	Flexible-Obedient Probe
P455-3N	01470 7	5.5mm (0.22 in.)	3m (9.8 ft.)	Flexible-Obedient Probe

\*1-General's 12mm close-focus probe has a defined depth of field of 0.25 to 4 in. (6.4 to 101.6mm)

\*2-General's 12mm far-focus probe has a minimum focal distance of 4 in. (101.6mm) and is in focus from there to 8 ft. (2.4m)



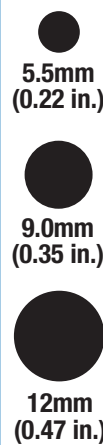
**DCS050 Series**  
(see page 24)

## Accessories for The SEEKER™ Video Inspection Systems

Model No.	UPC	Diameter	Description
RCV100	01446 2	–	Wireless USB Video Receiver for The SEEKER™ 100 & 400 Systems
AC2	01568 1	–	Replacement AC Adaptor/Charger for DCS400 Series
ADP05V	01497 4	–	Car Charger for DCS400 and DCS100 Series
PT12	01559 9	12mm (0.47 in.)	Mirror, magnet and hook accessories for DCS200, DCS300 and DCS400
PT9	01560 5	9mm (0.35 in.)	Mirror, magnet, hook and thread protector accessories for DCS200-09 and DCS400-09
PT5	01561 2	5.5mm (0.22 in.)	Mirror, guide ball and thread protector accessories for DCS200-05, DCS355 and DCS400-05

	Wireless Recording Video Over Internet	Utility Non-Recording	Utility Non-Recording	Wireless USB Video Over Internet	Utility USB
	DCS400 DCS400-09 DCS400-05	DCS300 DCS355	DCS200 DCS200-09 DCS200-05	DCS100	DCS050 DCS050-09
	The SEEKER™ 400 Series Wireless Recording Video Inspection Systems	The SEEKER™ 300 Series Video Inspection Systems	The SEEKER™ 200 Series Video Inspection Systems	The SEEKER™ 100 Wireless USB Video Inspection System	The SEEKER™ 050 Series USB Video Inspection Systems
	3.5 in. color LCD	3.5 in. color LCD	2.4 in. color LCD	User's computer	User's computer
	Video and still images	–	–	Video and still images	Video and still images
	Camera probe: 640 x 480 (DCS400, DCS400-09); 320 x 240 (DCS400-05) Monitor: 320 x 240 (DCS400, DCS400-09); 160 x 120 (DCS400-05)	Camera probe: 640 x 480 (DCS300); 320 x 240 (DCS355) Monitor: 320 x 240 (DCS300); 160 x 120 (DCS355)	Camera probe: 640 x 480 (DCS200, DCS200-09); 320 x 240 (DCS200-05) Monitor: 320 x 240 (DCS200, DCS200-09); 160 x 120 (DCS200-05)	Live video & still images: 640 x 480	Live video & still images: 640 x 480
	4X Zoom, 180° rotation	2X Zoom, 180° rotation	2X Zoom, 180° rotation	Via user's computer	Via user's computer
	2 GB	–	–	–	–
	Rechargeable Li-ion Battery A/C Adapter/Charger	1 "9V" Battery	1 "9V" Battery	Rechargeable Li-ion Battery A/C Adapter/Charger	No battery needed
	3 years	3 years	3 years	1 year (hardware only)	1 year (hardware only)
	DCS400 - 12mm DCS400-09 - 9mm DCS400-05 - 5.5mm	DCS300 - 12mm DCS355 - 5.5mm	DCS200 - 12mm DCS200-09 - 9mm DCS200-05 - 5.5mm	12mm	DCS050 - 12mm DCS050-09 - 9mm
	Flexible-Obedient	Flexible-Obedient	Flexible-Obedient	Flexible-Obedient	Flexible-Obedient
	1m (3.28 ft.)	1m (3.28 ft.)	1m (3.28 ft.)	1m (3.28 ft.)	1m (3.28 ft.)
	60°	60°	60°	60°	60°
	DCS400 - 1 to 12 in. DCS400-09 - 1 in. to 10 ft. DCS400-05 - 0.25 to 4 in.	DCS300 - 4 in. to 8 ft. DCS355 - 0.25 to 4 in.	DCS200 - 4 in. to 8 ft. DCS200-09 - 1 in. to 10 ft. DCS200-05 - 0.25 to 4 in.	4 in. to 8 ft.	DCS050 - 4 in. to 8 ft. DCS050-09 - 1 in. to 10 ft.
	IP67 (Probe only)	IP67 (Probe only)	IP67 (Probe only)	IP67 (Probe only)	IP67 (Probe only)
	2 LEDs, Plastic (DCS400); 4 LEDs, Glass, Anodized Aluminum (DCS400-09, DCS400-05)	2 LEDs, Plastic (DCS300); 4 LEDs, Glass, Anodized Aluminum (DCS355)	2 LEDs, Plastic (DCS200); 4 LEDs, Glass, Anodized Aluminum (DCS200-09, DCS200-05)	2 LEDs, Plastic	2 LEDs, Plastic (DCS050); 4 LEDs, Glass, Anodized Aluminum (DCS050-09)

**SEEKER™  
Probe  
Diameters  
(actual size)**





## RUGGED RECORDING VIDEO INSPECTION SYSTEM – DCS350

Ideal for applications in harsh environments requiring a durable and ruggedized system. Features voice annotation, internal memory and removable SD card.

### FEATURES & BENEFITS:

- Includes long (1m/39 in.), thin (12mm/0.47 in.) diameter, flexible-obedient camera-tipped probe for looking deep into tight spaces. Also available are longer and thinner (9mm and 5.5mm) probes, and probe extensions that extend inspection range to 16 ft. (5m).
- All probes and extensions are oil, water and dust-proof to IP67 standard.
- Grip and monitor are double-molded, making them drop-resistant to 1m (39 in.) height and IP54 splash-proof.
- 64MB internal memory for added versatility and convenience
- Built-in microphone to enable voice annotation of video recordings
- 2GB MicroSD card (upgradeable to 16GB), and USB jack to facilitate photo and video transfer
- 3.5 in. (89mm) diagonal color LCD shows crystal-clear videos and images
- One-button video start/stop and photo capture
- Image flip and 1 – 4X zoom buttons
- Two adjustable-brightness LEDs illuminate dark areas
- TV Out jack and included cable send video and images to larger monitor
- Includes three probe tip accessories (magnetic pickup, pickup hook and 45° mirror)
- Adjustable Auto Power Off interval
- Custom molded hard carrying case
- Powered by Alkaline or rechargeable “AA” batteries
- Choice of five menu languages

### SPECIFICATIONS:

- ◆ Display Size/Type: 3.5 in. (89mm) diagonal TFT color LCD
- ◆ Display Resolution: 320 x 240 pixels
- ◆ Monitor Controls: 180° flip, 1 to 4X zoom in 0.5 steps, brightness + and –, start/stop video recording, take picture
- ◆ Probe Diameter/Type: 12mm (0.47 in.) flexible-obedient
- ◆ Probe Length: 1m (39 in.)

- ◆ Probe Field of View: 60°
- ◆ Probe Depth of Field: 1 to 12 in. (25 to 300mm)
- ◆ Camera Light Source: 2 adjustable-brightness white LEDs
- ◆ Impact Resistance: To height of 1m (39 in.)
- ◆ Water, Dust, Splash Resistance Levels: Camera-tipped probe designed to meet IP67; Grip and monitor designed to meet IP54
- ◆ Operating Temperature/Humidity: 32° to 113°F (0° to 45°C) @ 5 to 95% RH
- ◆ Internal Flash Memory Capacity: 64MB
- ◆ Maximum SD Card Capacity: 16GB
- ◆ Video Compatibilities: NTSC and PAL
- ◆ Video Resolution/File Type: 320 x 240 pixels/.avi
- ◆ Still Image Resolution/File Type: 640 x 480 pixels/.jpg
- ◆ PC Interface: USB2.0
- ◆ Menu Languages: English, French, Spanish, Portuguese, Mandarin Chinese
- ◆ Dimensions of Grip: 10.6 x 3.0 x 4.0 in. (270 x 75 x 100mm)
- ◆ Weight of Grip: 1 lb. (454g)
- ◆ Power Source: 4 “AA” batteries (included)

### INCLUDES:

- 1m (39 in.) Long x 12mm (0.47 in.) Diameter Camera-tipped Probe, Wand-type Grip and 3.5 in. (89mm) Color LCD
- 2GB MicroSD Card
- Three Probe Tip Accessories (Magnetic Pickup, Pickup Hook, 45° Mirror)
- ScopeView Video/Image Display Software + Driver on Mini-CD
- USB and video cables
- 4 “AA” Batteries
- Custom Hard Case
- User’s Manual
- 3 Year Limited Warranty

UPC	NO.
01582 7	DCS350



DCS350



Inspecting a crawl space the quick and easy way



Find blockages or broken registers in A/C ductwork

# Rugged Non-Recording Camera Scope

## RUGGED NON-RECORDING VIDEO INSPECTION SYSTEM – DCS280

Ideal for real-time applications.

### FEATURES & BENEFITS:

- Big, bright color LCD for crystal-clear real-time video imaging
- 9mm (0.35 in.) diameter x 1m (39 in.) long camera-tipped probe is thin enough to fit into very narrow spaces
- 2m and 3m long x 9mm diameter probes are available
- Super thin 5.5mm dia. probes in 1m, 2m and 3m lengths are also available
- All probes are oil, water and dust-proof to IP67 standard. The DCS280's wand-type grip and monitor are IP54 splash-proof.
- Four adjustable LEDs in camera head illuminate dark areas
- Unit is drop-resistant to 1m height and comes in a protective hard case
- Invert what you see 180° to read labels right-side up and ZOOM video up to 200% to show details
- Pays for itself quickly: Avoid the cost and trouble of tearing down engines
- One-handed operation frees your other hand to use tools
- AV Out jack enables video connection to any NTSC television
- Includes four useful probe tip accessories

### APPLICATIONS:

- Inspecting cylinders, valves, diesel injectors and glow plugs
- Viewing behind body panels and under the dashboard for electrical wiring and connections problems
- Examining for corrosion and wear in hard-to-see areas
- Inspecting fluid lines and leaks

### INCLUDES:

- Video Inspection System with Wand-type Grip and 2.4 in. (61mm) Color LCD
- 1m (39 in.) Long x 9mm (0.35 in.) Diameter Flexible-obedient Probe
- Four Probe Tip Accessories (Thread Protector, Magnetic Pickup, Pickup Hook, 45° Mirror)
- Video cable
- 4 "AA" Batteries
- Custom Hard Case
- User's Manual
- 3 Year Limited Warranty

### SPECIFICATIONS:

- ◆ Display Size/Type: 2.4 in. (61mm) diagonal TFT color LCD
- ◆ Display Resolution: 320 x 240 pixels
- ◆ Monitor Controls: 180° flip, 1 to 2X zoom in 0.2 steps, brightness + and –
- ◆ Probe Diameter/Type: 9mm (0.35 in.) flexible-obedient
- ◆ Probe Length: 1m (39 in.)
- ◆ Probe Field of View: 60°
- ◆ Probe Depth of Field: 1 in. to 10 ft. (25mm to 3m)
- ◆ Camera Light Source: 4 adjustable-brightness white LEDs
- ◆ Impact Resistance: To height of 1m (39 in.)
- ◆ Water, Dust, Splash Resistance Levels: Camera-tipped probe designed to meet IP67; Grip and LCD designed to meet IP54
- ◆ Operating Temperature/Humidity: 32° to 113°F (0° to 45°C) @ 5 to 95% RH
- ◆ Dimensions of Console: 10 x 3.6 x 2.3 in. (254 x 91 x 58mm)
- ◆ Weight of Console: 1 lb. (454g)
- ◆ Dimensions of Case: 15 x 11 x 3.5 in. (381 x 279 x 89mm)
- ◆ Weight of Case and Contents: 4 lb. (1.8 kg)
- ◆ Power Source: 4 "AA" batteries (included)

UPC	NO.
01572 8	DCS280



DCS280



The rugged DCS280 shrugs off the accidental bumps typical of industrial work



Perfect for driveway mechanics

# The SEEKER™ Series Camera Scopes



**DCS050**

†Windows® 7, Windows® Vista and Windows® XP are registered trademarks of Microsoft Corporation

## THE SEEKER™050 USB VIDEO INSPECTION SYSTEMS – DCS050

Features a 12mm (0.47 in.) or 9mm (0.35 in.) diameter, 1m long waterproof camera probe with a USB connection to view images and video on your computer.

**FEATURES:**

- USB computer interface
- Works with Windows® 7, Windows® Vista and Windows® XP†
- Very affordable
- Adjustable light intensity from two (DCS050) or four (DCS050-09) built-in LEDs
- 1m (3.28 ft.) flexible-obedient probe retains configured shape to suit various applications
- Probe is IP67 water, oil and dust proof

- ◆ Field of View: 60°
- ◆ Operating Temperature: 32° to 113°F (0° to 45°C)
- ◆ Operating Humidity: RH 5% to 95% non-condensing
- ◆ Storage Temperature: -4° to 122°F (-20° to 50°C), ≤85% RH
- ◆ Dimensions: 10.5 x 2.9 x 3.1 in. (266 x 73 x 80mm)
- ◆ Weight: 4.8 oz. (135g) w/o probe
- ◆ Power Source: Computer's USB port

**SPECIFICATIONS:**

- ◆ Camera Resolution: 640 x 480 pixels
- ◆ Fixed Probe (DCS050): 12mm (0.47 in.) diameter x 1m (3.28 ft.) long with a depth of field of 4 in. to 8 ft.
- ◆ Fixed Probe (DCS050-09): 9mm (0.35 in.) diameter x 1m long with a depth of field of 1 in. to 10 ft. (25mm to 3m)

**INCLUDES:**

Scope Handle with Fixed 1m Long Flexible-Obedient Probe, User's Manual, 1-Year Limited Warranty (Hardware Only)

UPC	NO.	PROBE DIAMETER
01445 5	<b>DCS050</b>	12mm (0.47 in.)
01484 4	<b>DCS050-09</b>	9mm (0.35 in.)

## THE SEEKER™100 WIRELESS VIDEO INSPECTION SYSTEM – DCS100

Wirelessly transmits video and images to your computer up to 33 feet away; included software enables streaming video for remote viewing over the Internet.

**FEATURES:**

- Built-in radio transmitter wirelessly transmits live video signal to the RCV100 USB video receiver up to 10m away, enabling the video to be viewed on a Windows PC and streamed live over the Internet
- Works with Windows® 7, Windows® Vista and Windows® XP†
- 12mm (0.47 in.) diameter x 1m (3.28 ft.) long flexible-obedient far focus\*2 camera-tipped probe is water, oil and dust proof to IP67 standard
- Optional probe extensions of 1m, 2m, and 3m (3.28 ft., 6.56 ft., 9.84 ft.) are available for the 12mm probe
- In addition to the standard 12mm (0.47 in.) diameter far-focus\*2 probe, the DCS100 handle can also accept optional 9.0mm (0.35 in.) and 5.5mm (0.22 in.) diameter close-focus\*1 camera-tipped probes
- Adjustable light intensity from two camera-lighting LEDs
- Flexible-obedient probes retain configured shape

**SPECIFICATIONS:**

- ◆ Wireless Frequencies: 2414MHz, 2432MHz, 2450MHz, 2468MHz
- ◆ Wireless Range: Up to 10m (33 ft.)
- ◆ Operating Temperature: 32° to 103°F (0° to 45°C)
- ◆ Operating Humidity: 5% to 95% RH non-condensing
- ◆ Storage Temperature: -4° to 140°F (-20° to 50°C), ≤85% RH
- ◆ Dimensions: 3.26 x 1.65 x 0.74 in. (83 x 42 x 19mm)
- ◆ Weight: 1.23 oz. (35g)

**INCLUDES:**

Custom Hard Case, Transmitter Handle with 12mm Diameter x 1m Long Flexible-Obedient Probe, 3 Accessory Tools: (45° Mirror, Magnetic Pick-Up, Pick-Up Hook), RCV100 Wireless USB Video Receiver, USB Extension and Video Cables, Software on Mini-CD, User's Manual, 1-Year Limited Warranty (Hardware Only)

UPC	NO.	PROBE DIAMETER
01443 1	<b>DCS100</b>	12mm (0.47 in.)

## WIRELESS USB VIDEO RECEIVER – RCV100

Unique device wirelessly interfaces The Seeker™100 or The Seeker™400 Video Inspection System to any Windows computer via its USB2.0 port from up to 33 ft. away. Once the connection is made, real-time inspection video and still images captured by the Seeker can be viewed and stored on the PC. Skype-enabled ScopeView™ media management software included with the RCV100 allows inspection video to be streamed over the Internet to support videoconferencing and remote diagnostics.

**FEATURES:**

- Skype-enabled streaming video receiver sends live video over the Internet
- Includes easy-to-use, powerful software
- USB 2.0 interface
- Works with DCS100 and DCS400 series to enable remote video presentations and live video troubleshooting and training
- 4 channel selection, enabling the user to select uncluttered radio bands

**INCLUDES:**

Receiver, USB Extension Cable, Video Cable, Software on Mini-CD, User's Manual, 1-Year Limited Warranty

UPC	NO.
01446 2	<b>RCV100</b>



**DCS100**

\*1 - General's 12mm close focus probe has a defined depth of field of 0.25 to 4 in. (6.4 to 101.6mm)

\*2 - General's 12mm far focus probe has a minimum focal distance of 4 in. (101.6mm) and is in focus from there to 8 ft. (2.4m)



**RCV100**



# The SEEKER™ Series Camera Scopes

## THE SEEKER™200 SERIES VIDEO INSPECTION SYSTEMS – DCS200

Compact video camerascopes for the visual inspection of inaccessible areas.

**FEATURES:**

- ◆ View inspection video instantly on the 2.4 in. (61mm) color LCD
- ◆ Separate monitor buttons for 2x zoom and 180° image flip
- ◆ System includes a 1m (3.28 ft.) long, flexible-obedient, camera-tipped probe
- ◆ Probes are flexible, strong and slim enough to perform automotive engine check-up
- ◆ Flexible-obedient probes retain configured shape to suit different inspection needs
- ◆ Probes are water, oil and dust proof to IP67 standard
- ◆ Optional 12mm probe extensions of 1m, 2m, and 3m (3.28 ft., 6.6 ft., 9.9 ft.) are available for maximum extension of up to 5m (16 ft.)

**SPECIFICATIONS:**

**DCS200 SYSTEM CONSOLE**

- ◆ Display: 2.4 in. (61mm) Color LCD
- ◆ Resolution: 320 × 240 pixels
- ◆ Operating Temperature: 32° to 113°F (0° to 45°C)
- ◆ Power Source: 1 “9V” battery (included)
- ◆ Weight: 15.6 oz. (442g)

**DCS200**

- ◆ Supplied Probe: 12mm diameter, 1m long
- ◆ Light Source: 2 adjustable-brightness LEDs
- ◆ Field of View: 60°

- ◆ Optional 12mm Dia. Probe Extensions: 1m, 2m, 3m (3.28 ft., 6.6 ft., 9.9 ft.) for maximum extension of 5m (16 ft.)

**DCS200-05**

- ◆ Supplied Probe: 5.5mm diameter, 1m long
- ◆ Light Source: 4 adjustable-brightness LEDs
- ◆ Field of View: 95°
- ◆ Tip Accessories: Thread protector, ball guide and mirror

**DCS200-09**

- ◆ Supplied Probe: 9mm diameter, 1m long
- ◆ Light Source: 4 adjustable-brightness LEDs
- ◆ Field of View: 95°
- ◆ Tip Accessories: Thread protector, pick-up hook, magnetic pick-up, 45° mirror

**INCLUDES:**

Custom Hard Case, Pistol Grip Camera Handle with 1m Long, Flexible-Obedient Probe, 3 Accessory Tools, 1 “9V” Battery, Mini-Screwdriver, User’s Manual, 3 Year Limited Warranty

UPC	NO.	PROBE DIAMETER
01372 4	<b>DCS200</b>	12mm (0.47 in.)
01494 3	<b>DCS200-05</b>	5.5mm (0.22 in.)
01482 0	<b>DCS200-09</b>	9mm (0.35 in.)



**DCS200**



## THE SEEKER™300 VIDEO INSPECTION SYSTEMS – DCS300

Compact video camerascopes for the visual inspection of inaccessible areas.

**FEATURES:**

- ◆ View inspection video instantly on the 3.5 in. (89mm) color LCD screen
- ◆ Separate monitor buttons for 2x zoom and 180° image flip
- ◆ System includes a 1m (3.28 ft.) long, flexible-obedient, camera-tipped probe
- ◆ Camera-tipped probes have built-in adjustable LED lighting
- ◆ Probes are flexible, strong and slim enough to perform automotive engine check-up
- ◆ Interchangeable probes are water, oil and dust proof to IP67 standards

**SPECIFICATIONS:**

**DCS300 CONSOLE**

- ◆ Display: 3.5 in. (89mm) Color LCD
- ◆ Resolution: 320 × 240 pixels
- ◆ Operating Temperature: 32° to 113°F (0° to 45°C)
- ◆ Power Source: 1 “9V” battery (included)
- ◆ Weight: 16 oz. (454g)

**SYSTEM PROBES:**

**All probes are:**

- ◆ Camera-tipped with built-in adjustable LED lighting
- ◆ Flexible, strong and slim enough to perform automotive engine check-up
- ◆ Water, oil and dust proof to IP67 standard
- ◆ Flexible-obedient, meaning they retain their configured shape to suit various inspection needs

**DCS300**

- ◆ Supplied Probe: 12mm diameter, 1m long
- ◆ Light Source: 2 adjustable-brightness LEDs
- ◆ Field of View: 60°
- ◆ Tip Accessories: 45° Mirror, Magnetic Pick-Up, Pick-Up Hook
- ◆ Optional 12mm Dia. Probe Extensions: 1m, 2m, 3m (3.28 ft., 6.6 ft., 9.9 ft.) for maximum extension of 5m (16 ft.)

**DCS355**

- ◆ Supplied Probe: 5.5mm diameter, 1m long
- ◆ Light Source: 4 adjustable-brightness LEDs
- ◆ Field of View: 60°
- ◆ Tip Accessories: Thread protector, ball guide and mirror

**INCLUDES:**

Custom Hard Case, Pistol Grip Camera Handle with 1m Long Flexible-Obedient Probe, 3 Accessory Tools, 1 “9V” Battery, Mini Screwdriver, User’s Manual, 3 Year Limited Warranty

UPC	NO.	PROBE DIAMETER
01373 1	<b>DCS300</b>	12mm (0.47 in.)
01472 1	<b>DCS355</b>	5.5mm (0.22 in.)



**DCS300**



# The SEEKER™ 400 & Specialty Borescope

## THE SEEKER™ 400 WIRELESS RECORDING VIDEO INSPECTION SYSTEMS – DCS400

Wireless interface with optional RCV100 module enables streaming of live inspection video over the Internet.

**FEATURES:**

- Color monitor can be detached from pistol grip to show inspection video up to 33 ft. from probe
- 4x zoom and 180° video flip buttons on monitor
- All systems include one long, thin flexible-obedient camera-tipped probe with IP67 water/oil/dustproof rating
- Included Li-ion batteries for monitor and grip can be charged at same time through included “Y” cable
- Included 2GB MicroSD card can store up to 3 hours of AVI video as well as snapshot JPEGs
- NTSC and PAL analog video out
- Choice of 5 menu languages: English, French, Spanish, Chinese and Portuguese
- Optional IP67 probes of various lengths and diameters are available (see p. I-27)

**SPECIFICATIONS:**

**DETACHABLE WIRELESS MONITOR:**

- ◆ Display: 3.5 in. (89mm) diagonal color LCD with 320 x 240 pixel resolution
- ◆ Dimensions: 3.9 x 3.3 x 1.0 in. (100 x 85 x 25mm)
- ◆ Weight: 6.1 oz. (172g)

**PISTOL-GRIP PROBE HANDLE:**

- ◆ Transmission Range: Up to 10m (33 ft.)
- ◆ Dimensions: 8.5 x 6.5 x 1.9 in. (215 x 165 x 50mm)
- ◆ Weight: 15 oz. (425g)

**DCS400**

- ◆ Supplied Probe: 12mm diameter, 1m long
- ◆ Light Source: 2 adjustable-brightness LEDs
- ◆ Field of View: 60°; Depth of Field: 1 to 12 in. (25 to 300mm)
- ◆ Tip Accessories: Magnetic Pickup, Pickup Hook, 45° Mirror
- ◆ Optional 12mm Probe Extensions: 1m, 2m, 3m (3.28 ft., 6.6 ft., 9.9 ft.) for maximum extension of 5m (16 ft.)

**DCS400-05**

- ◆ Supplied Probe: 5.5mm diameter, 1m long
- ◆ Light Source: 4 adjustable-brightness LEDs
- ◆ Field of View: 60°; Depth of Field: 0.25 to 4 in. (6.4 to 100mm)
- ◆ Tip Accessories: Thread protector, ball guide and mirror

**DCS400-09**

- ◆ Supplied Probe: 9mm diameter, 1m long
- ◆ Light Source: 4 adjustable-brightness LEDs
- ◆ Field of View: 60°; Depth of Field: 1 in. to 10 ft. (25mm to 3m)
- ◆ Tip Accessories: Thread protector, pick-up hook, magnetic pick-up, 45° mirror



**INCLUDES:**

Pistol Grip Handle, Flexible-Obedient Probe, Detachable Wireless Monitor, 2GB MicroSD Memory Card, 3 Accessory Tools, USB and Video Interconnect Cables, 2 Lithium-Ion Rechargeable Batteries with AC Adaptor/Charger, Custom Hard Case, User's Manual, 3 Year Limited Warranty

UPC	NO.	PROBE DIAMETER
013717	<b>DCS400</b>	12mm (0.47 in.)
01447 9	<b>DCS400-05</b>	5.5mm (0.22 in.)
01426 4	<b>DCS400-09</b>	9mm (0.35 in.)

## THE PALMSCOPE™ – DCS950

A rugged, full-featured video inspection system no bigger than a smartphone. Ideal for busy craftsmen, professionals and DIYers.

**FEATURES:**

- Fits in your pocket or clips on your belt
- Affordable
- 1 meter drop-proof
- Long, thin camera-tipped probe penetrates tight, hard-to-reach spaces
- Probe is waterproof, holds its shape and coils inside clamshell case for storage
- Four camera-lighting LEDs produce bright, crisp video on large color LCD
- Four screen controls
- CE and RoHS approved
- ◆ Screen Controls: Brightness up and down, 1 to 4X zoom in 6 steps, 180° flip
- ◆ Case Impact Resistance: From height of 39 in. (1m) onto 2 in. (50mm) thick hardwood
- ◆ Dimensions: 5.4 x 2.9 x 1.5 in. (136 x 73 x 39mm)
- ◆ Weight: 9 oz. (250g)
- ◆ Power Source: (4) “AAA” batteries (not included)

**INCLUDES:**

Nylon Pouch with Belt Clip, Four Probe Tip Accessories (Pickup Hook, Magnetic Pickup, 45° Mirror, Thread Protector), User's Manual, 1 Year Limited Warranty)

UPC	NO.
01660 2	<b>DCS950</b>

**SPECIFICATIONS:**

- ◆ Probe Length: 24 in. (0.6m)
- ◆ Camera Head Diameter: 0.35 in. (9mm)
- ◆ Probe/Camera Head Water/Dust/Oil Resistance: to IP67 standard
- ◆ LCD Size: 2.7 in. (686mm) diagonal
- ◆ LCD/Camera Resolution: 320 x 240 pixels (QVGA)
- ◆ Camera Depth of Field: 1 in. to 10 ft. (25mm to 3m)
- ◆ Camera Field of View: 60°



**iBORESCOPE – DCiS1**

Ideal for wireless inspection applications. With the help of a free app, iBorescope can wirelessly stream video to your iPhone®, iPad® or Android™ device via a self-generated WiFi hotspot without Internet access. Video clips and still images extracted from the stream can be displayed, stored, played back and shared.

**FEATURES:**

- ◆ 6 ft. (1.83m) long, thin (0.39 in./9.8mm diameter) flexible-obedient probe captures VGA (640 x 480 pixel) resolution video
- ◆ App's VIDEO and SNAP SHOT soft buttons capture .mp4 (Apple) or .m4v (Android) video clips and still .jpg images of video stream and save files to Photos folder of iPad/iPad or Android device. Video clips and photos can be viewed immediately, shared immediately by text, or shared later via e-mail or Skype™.
- ◆ Non-replaceable Li-ion battery charges through included USB cable
- ◆ Includes three useful probe tip accessories

**SPECIFICATIONS:**

- ◆ Compatible with: All iPad, iPhone and Android devices
- ◆ Security: WiFi (WEP) password
- ◆ Video Resolution: 640 x 480 pixels (VGA)
- ◆ WiFi Range: 60 ft. (18m), max (unobstructed)
- ◆ Camera Lighting: 2 adjustable-brightness LEDs
- ◆ Camera Head Diameter: 0.39 in. (9.8mm)
- ◆ Camera Depth of Field: 1/2 in. to 12 in. (12.7 to 305mm)
- ◆ Camera Field of View: 54°

- ◆ Probe Length: 6 ft. (1.83m)
- ◆ Probe Minimum Bending Radius: 1.77 in. (45mm)
- ◆ Dust & Water Resistance Rating: IP67 (Probe & Camera Head only)
- ◆ Operating Voltage: 3.7V internal from 5V input
- ◆ Current Consumption: 600 mA, max @ 5VDC
- ◆ Operating Temperature: 32° to 104°F (0° to 40°C)
- ◆ Grip Dimensions: 8.50 x 2.50 x 4.88 in. (216 x 64 x 124mm)
- ◆ Weight: 5.80 oz. (164.43g)
- ◆ Power Source: Rechargeable Li-ion battery with 5V/1A output
- ◆ Battery Life: 3 hours (typical)

**INCLUDES:**

WiFi Grip, 0.39 in. Diameter x 6 ft. Long Probe, Charging Cable with USB Plug (compatible with iPad/iPhone/Android Power Adaptor and all computers), Video Cable, Three Probe Tip Accessories (45° Mirror, Magnetic Pickup, Pickup Hook), Custom Hard Case, User's Manual, 1-Year Limited Warranty

UPC	NO.
01591 9	<b>DCiS1</b>



**DCiS1**



iBorescope makes it easy to identify the jacks on the back of rack or wall-mounted equipment

**SEASCOPE™600 NON-RECORDING**  
**SEASCOPE™660 RECORDING**  
**WATERPROOF VIDEO INSPECTION SYSTEMS – DCS600, DCS660**

Ideal for plumbing-related applications and inspections of submerged structures and parts of boats, ships, bridges or offshore oil platforms.

**FEATURES:**

- ◆ Makes it possible to inspect sewer and water lines carrying running water
- ◆ Enables a diver or snorkeler to view probe video under water in real time. Other "waterproof" inspection systems lack watertight grips and monitors. **Entire unit can be submerged.**
- ◆ Ideal for marine search & rescue operations
- ◆ Eliminates concerns about accidentally dropping or dunking grip or monitor into water
- ◆ Grip, probe and monitor are guaranteed leak-proof to depth of 1m; all three components will also resist leaks at depths up to 2m for short periods (1 hour, max)
- ◆ 3.4 in. (86mm) color LCD makes videos large and crystal-clear
- ◆ Video can be inverted (rotated 180°) to make it easier to read labels and serial numbers
- ◆ Analog Video Out jack

**Additional Features for SeaScope™660**

- ◆ Record time/date-stamped still images and videos on included 2GB MicroSD memory card
- ◆ Videos can be panned by joystick and zoomed up to 4X
- ◆ USB jack and cable for PC connection

**SPECIFICATIONS:**

- ◆ Camera-Tipped Flexible Obedient Probe Diameter, Length: 9.8mm (0.39 in.), 1m (3.3 ft.)

- ◆ Field of View: 54°
- ◆ Depth of Field: 0.6 to 6 in. (15 to 150mm)
- ◆ Camera Illumination: 2 adjustable LEDs
- ◆ LCD Type, Size: TFT, 3.4 in. (86mm) diagonal
- ◆ Display Resolution: 320 x 240 pixels
- ◆ Operating Temperature: 32° to 113°F (0° to 45°C)
- ◆ Grip Dimensions: 13.0 x 10.5 x 4.5 in. (330 x 267 x 114mm)
- ◆ Grip Weight: 56 oz. (1587.57g)
- ◆ Power Source: 4 "AA" batteries (not included)

**INCLUDES:**

Watertight Grip, Monitor and 1m Camera-tipped Probe; Video Cable; Set of Three Probe Tip Accessories (45° Mirror, Pickup Hook and Magnetic Pickup); Hard Plastic Protective Case; User's Manual, 1-Year Limited Warranty. DCS660 also includes 2GB MicroSD Memory Card, USB Cable

UPC	NO.
01514 8	<b>DCS600</b>
01515 5	<b>DCS660</b>
01596 4	<b>P600-2</b> 70 in. (1.8m) long x 9.8mm diameter optional probe
01597 1	<b>P600-3</b> 105 in. (2.7m) long x 9.8mm diameter optional probe



**DCS600**

**DCS660**

**N** Indicates optional NIST calibration is available



## Specialty Tools & Instruments

---

**GENERAL TOOLS & INSTRUMENTS**  
80 White Street, New York, NY 10013-3567  
PHONE (212) 431-6100 • FAX (212) 431-6499 • TOLL FREE (800) 697-8665  
e-mail: [gentools@generaltools.com](mailto:gentools@generaltools.com)

[www.generaltools.com](http://www.generaltools.com)

Catalog No. DCS14 Printed in USA 04/14

©2014 GENERAL TOOLS & INSTRUMENTS

Not responsible for typographical errors.