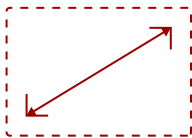


VB-PEN-005

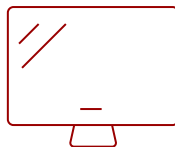
## Key Features

---

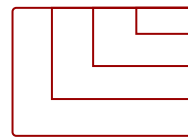
- Active Stylus Pen with Power Switch
- Compatible with All LGD in-cell touch-enabled monitors



DISPLAY



PANEL



RESOLUTION

## Product Description

---

Active Stylus Pen with Power Switch. Compatible with All LGD in-cell touch-enabled monitors.

## Specifications

---

### More Information

**Backlight Compensation**

No

**Wireless Connectivity**

N/A

**Packaging (in.)**


13.6 x 7.3 x 11.6

**Gross (lbs)**

10.0

**Contact Sales**

[ViewSonic.com](http://ViewSonic.com)

888.881.8781 

email: [salesinfo@viewsonic.com](mailto:salesinfo@viewsonic.com) 