

Key Features

Wide Quad HD Resolution | SuperClear® IPS Panel Technology | Versatile

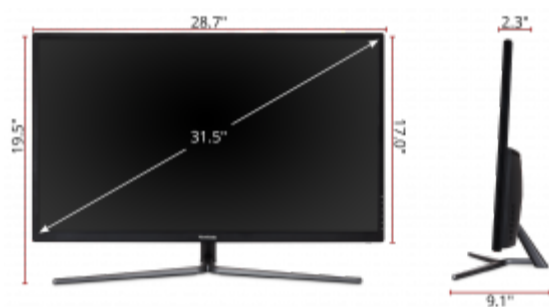
Connectivity | Slim Bezel Design | Optimized View Settings



Product Description

Whether for office use or home entertainment, the ViewSonic® VX3211-2K-mhd monitor is designed to take your viewing experience to a higher level. The VX3211-2K-mhd is a 32" WQHD monitor loaded with solid multimedia features, flexible connectivity options, wide-angle viewing, and amazing screen performance with 99% sRGB color coverage. Featuring stunning 2560 x 1440 resolution and a slim bezel design, this monitor provides 70% more on-screen content than Full HD monitors, making project management and multitasking easier than before. Versatile HDMI, DisplayPort, and VGA* inputs keep you connected to your favorite devices.

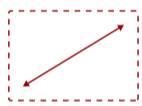
*VGA support for up to 1080p resolution only



1. Internal Speakers
2. Menu Control Panel
3. AC Power In
4. VESA Compatible Wall Mount (100 x 100 mm)
5. Headphone Hook



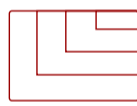
6. Kensington® Lock Slot
7. Audio Out
8. Audio In
9. VGA
10. DisplayPort
11. HDMI 1.4



32"
DISPLAY



IPS
PANEL



2560 x 1440
RESOLUTION

Contact Sales

- call: 888.881.8781
- email: salesinfo@viewsonic.com
- visit: viewsonic.com

Display:

Display Size (in.):	32
Viewable Area (in.):	31.5
Panel Type:	IPS
Resolution:	2560 x 1440
Resolution Type:	WQHD (2560x1440)
Static Contrast Ratio:	1,200:1
Dynamic Contrast Ratio:	80M:1
Light Source:	LED
Brightness:	250 cd/m2
Colors:	1.07B
Color Space Support:	10-Bit
Aspect Ratio:	16:9
Response Time (Typical GTG):	8ms
Response Time (GTG w/OD):	3ms
Viewing Angles:	178° horizontal, 178° vertical
Backlight Life (Hours):	30,000
Panel Surface:	Anti-glare, Hard coating (3H)

Compatibility:

PC Resolution (max):	2560 x 1440
Mac® Resolution (max):	2560 x 1440

Connector:

3.5mm Audio In(1), 3.5mm Audio Out(1), VGA(1), HDMI 1.4 In(1), Display Port(1)

Audio:

Internal Speakers:	2.5W (x2)
--------------------	-----------

Power:

Eco Mode (Conserve):	35W
Eco Mode (optimized):	42W
Consumption (typical):	55W
Consumption (max):	65W
Voltage:	AC 100-240V (universal), 50-60Hz
Stand-by:	0.3W

Additional Hardware:

Kensington Lock Slot:	1
-----------------------	---

Controls:

Physical Controls:	1, 2, 3, 4, 5, Power
On Screen Display:	Auto Image Adjust, Contrast/Brightness, Input Select, Audio Adjust, Color Adjust, Information, Manual Image Adjust, Advanced Image Adjust, Setup Menu, Memory Recall (See user guide for complete OSD functionality)

Operating Conditions:

Temperature:	32-104° F (0 - 40° C)
Humidity (non-condensing):	20-90%

Mount:

VESA Compatible:	100 x 100 mm
------------------	--------------

Video Signal:

Frequency Horizontal:	24 ~ 99KHz
Frequency Vertical:	24 ~ 75Hz

Video Input:

Analog Sync:	Separate Sync / Composite Sync / Sync on Green
Digital Sync:	TMD5, PCI-E

Ergonomics:

Tilt (Forward/Back):	5° / 13°
----------------------	----------

Weight (imperial):

Net (lbs):	15.5
Net Without Stand (lbs):	13.6
Gross (lbs):	22.6

Weight (metric):

Net (kg):	7.0
Net Without Stand (kg):	6.2
Gross (kg):	10.2

Dimensions (imperial) (WxHxD):

Packaging (in.):	33.0 x 24.2 x 11.1
Physical (in.):	28.7 x 19.5 x 9.1
Physical Without Stand (in.):	28.7 x 17.0 x 2.3

Dimensions (metric) (WxHxD):

Packaging (mm):	838 x 615 x 282
Physical (mm):	729.7 x 495.5 x 230.0
Physical Without Stand (mm):	729.7 x 432.8 x 58.3

General:

Regulations: cULus, FCC-B, ICES003, Energy Star, UL-MX-CoC, Mexico Energy, CE, REACH, EEL, WEEE, EAC, UkrSEPRO

PACKAGE CONTENTS: LCD Display, Power Cable , HDMI Cable , Audio Cable , Quick Start Guide

Recycle/Disposal: Please dispose of in accordance with local, state or federal laws.

Warranty: Three-year limited warranty on parts, labor and backlight

UPC: 766907918410

Accessories:

CB-00008948, CB-00010555, CB-00010684, CB-00010958, LCD-EE-27-03, LCD-EEEW-27-01, LCD-EEEW-27-02, LCD-EW-27-01, LCD-EW-27-02, LCD-EW-27-03, LCD-WMK-001, ViewSplit