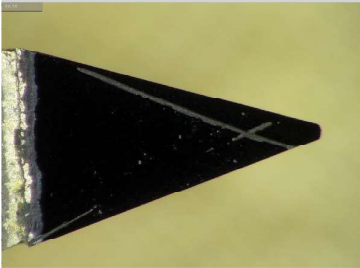




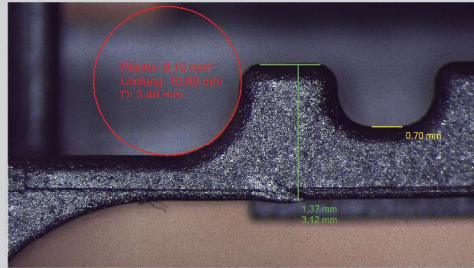
03.12.2020



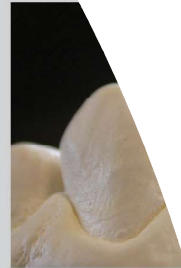
03.12.2020



04.12.2020



05.12.2020



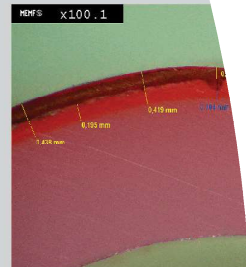
6



14.12.2020



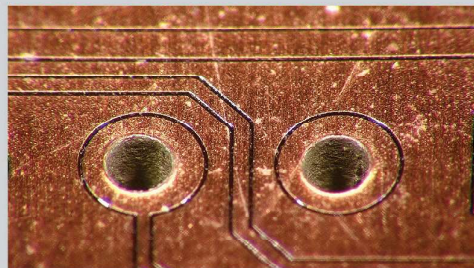
14.12.2020



15.12



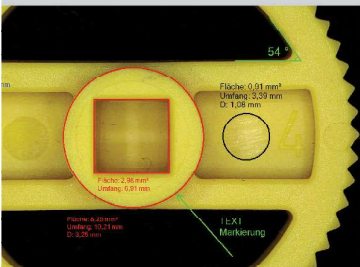
03.01.2021



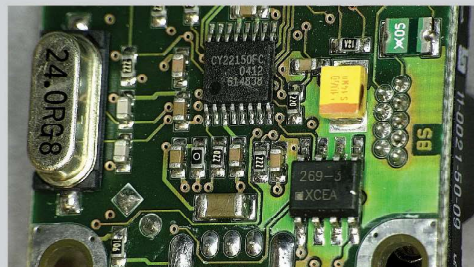
04.01.2021



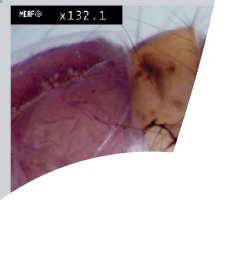
04



10.01.2021



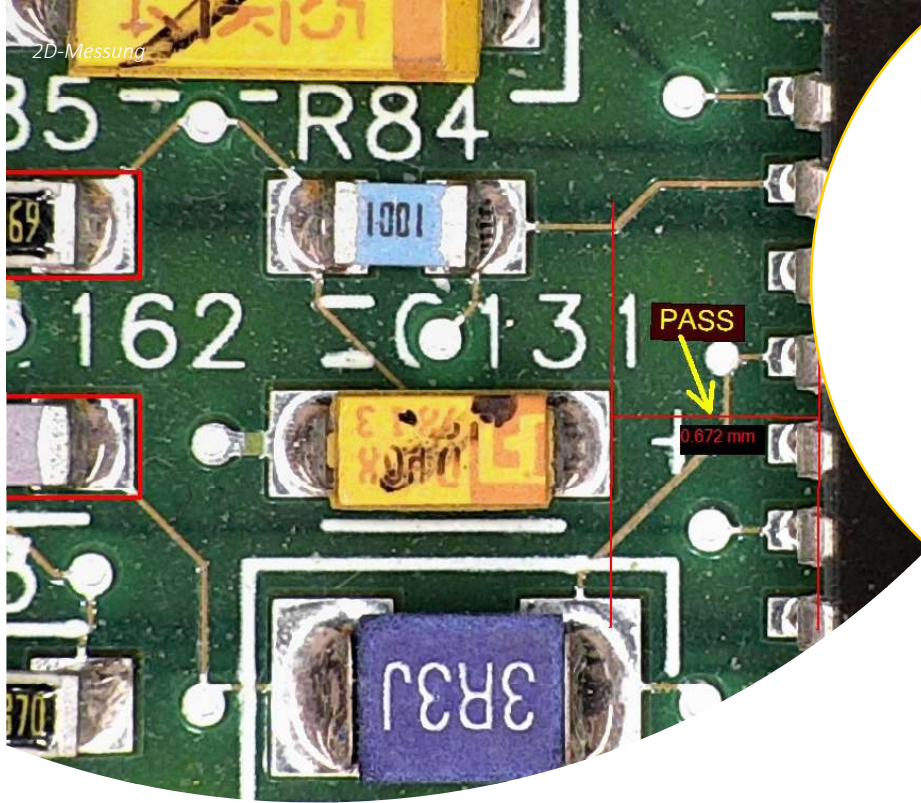
10.01.2021



15

ViFox EVO
Image capture, measurement
and analysis software





Highlights

- Easy image capture and quick access to saved images
- Comprehensive range of annotation tools
- On-screen measurement of lines, circles, areas, angles and more
- Save and recall calibration data
- Auto-creation of measurement table for data reporting
- Modular add-ons bring additional functionality

IMAGE CAPTURE, MEASUREMENT + ANALYSIS SOFTWARE

ViFox EVO is the latest release of the highly successful ViFox software which brings a range of capabilities to Vision Engineering inspections systems, including full control of the outstanding EVO Cam II digital inspection microscope.

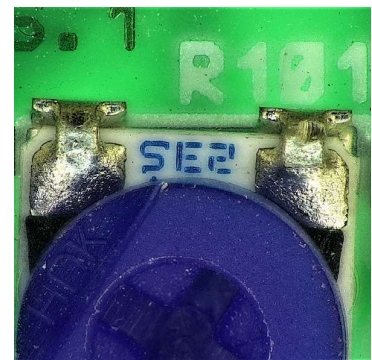
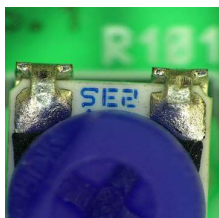
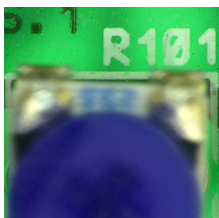
Features

- Save images as JPG, BMP, PNG or TIFF files
- Crosshair overlay and customisable overlay grid
- Create/import scaled overlays
- Edit the colour and thickness of lines, shapes, arrows and text annotations
- Layer functionality making further editing easy
- Drag-and-drop annotated images into other applications
- Tabulated results can be transferred e.g. to Word or Excel for reporting purposes
- Supported languages: English and German

Depth of Field option (focus stacking)

The Depth of Field option is an ideal means of recording multi-focus information in a single image. This option extends the depth of focus and brings the whole subject into sharp focus, even at high magnifications. It works by capturing a series of image at different focal points and combining the in-focus parts into a single image.

Focus stacked image



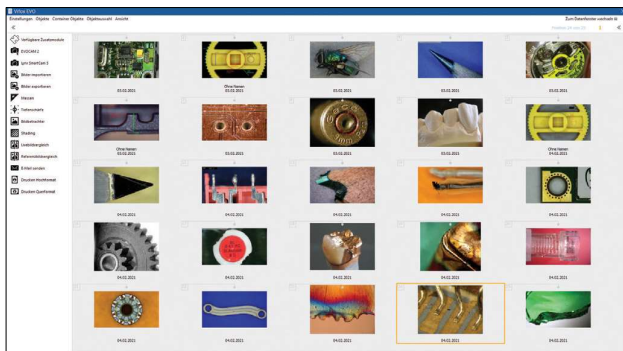
Measurement functionality

Calibration and measurement tools enable accurate on-screen measurements. Calibrated values are easily saved and recalled when required.

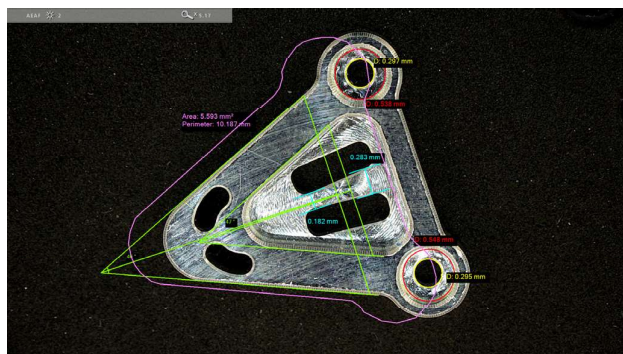
- Image gallery for quick image selection
- Measurement of lines, circles, areas, angles etc.
- Comprehensive measurement information is displayed and annotations can be added with ease
- Polygonal line measurement (of non-straight lines) poly-area measurement, parallel line tool
- Calibrated grid creation e.g. for rapid sizing and measurement
- Create or import scalable overlays e.g. for checking against design or quality requirements
- Define which measured values are displayed and included in the generated data report

Further options

In addition to the Depth of Field, there are a range of additional options to build a system customised to your specific needs. Specialist modules are available for creating panoramic images, HDR images, working with metal sections, weld seams, phases, pores and grain sizes.



Picture gallery



2D measurement



EVO Cam II digital microscope with ViFox EVO

Additional functions with EVO Cam II

Remote camera control of EVO Cam II

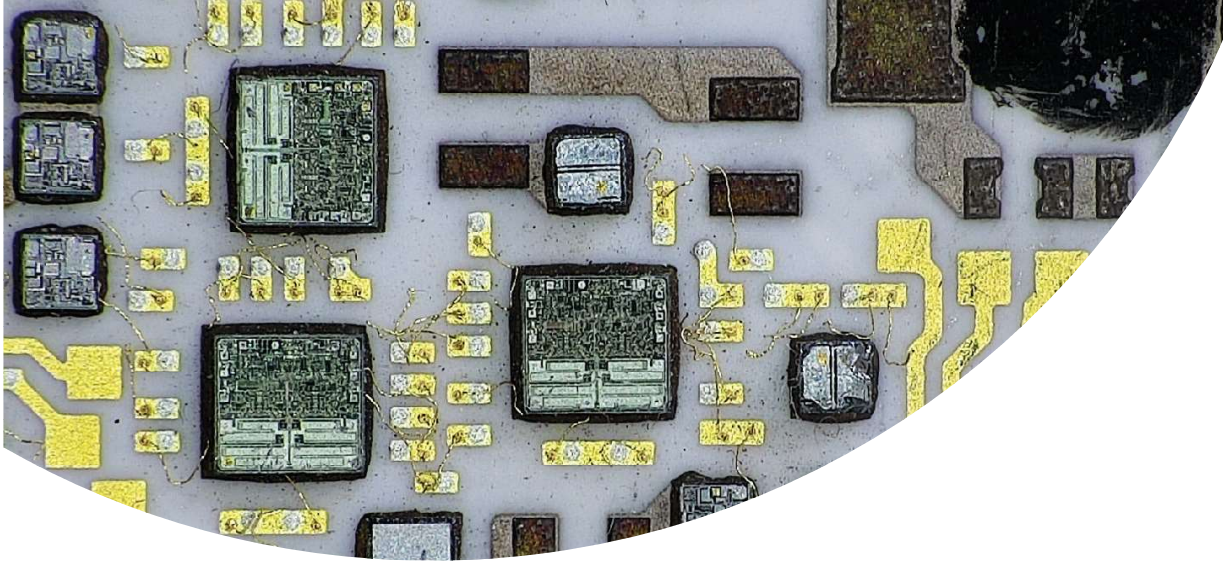
- Control EVO Cam II from the PC
- Full zoom and focus control
- Adjust camera settings such as lighting (overhead and sub-stage) gain, aperture, exposure, white balance, crosshair, setting B&W image etc.
- Save and recall camera settings and calibration information
- Loading a specific calibration will automatically apply the associated camera settings
- ... loading a camera setting profile will automatically apply the associated calibration values



Image viewer

Wi-Fi image transfer

Transfer captured images from EVO Cam II via Wi-Fi/WLAN. Triggered from the camera, the Wi-Fi option offers a simple solution for transferring images without the need for a hard-wired connection.



Compatible with ...

- Mantis Elite-Cam HD stereo microscope
- Lynx EVO stereo microscope (with SmartCam or SmartCam5 integrated camera option)
- EVO Cam II digital microscope (with full camera control)
- SX series of stereo microscopes (with camera option)

ViFox EVO Minimum PC requirements

- Windows 10 (64 bit)
- Intel Core i3
- 2.66GHz (i7, 3.40GHZ recommended)
- RAM: min. 8 GB (16 GB recommended)
- Graphics card 512 MB DirectX support (1GB own RAM recommended)
- Screen resolution 1920 x 1080
- Microsoft NET Framework: 3.51 SP1, 4.5, 4.6, 4.61
- Local administration rights for the installation required



To see our focused quality, please contact your Vision Engineering branch, local authorised distributor, or visit our website: www.visioneng.com

Sales Partner



Vision Engineering Ltd.
(UK Manufacturing & Commercial)
The Freeman Building, Galileo Drive, Send, Surrey, GU23 7ER, UK
T +44 (0) 1483 248300
E generalinfo@visioneng.co.uk

Vision Engineering Ltd. (Italy)
Via G. Paisiello 106
20092 Cinisello Balsamo MI, Italia
T +39 02 6129 3518
E info@visioneng.it

Vision Engineering (South East Asia)
P-03A-20, Impian Meridian, Jalan Subang 1, USJ 1, 47600 Subang Jaya, Selangor Darul Ehsan, Malaysia
T +604-619 2622
E info@visioneng.asia

Vision Engineering (Mexico)
T +01 800 099 5325
E infofmx@visioneng.com

Vision Engineering Inc.
(NA Manufacturing & Commercial)
570 Danbury Road, New Milford, CT 06776, USA
T +1 (860) 355 3776
E info@visioneng.com

Vision Engineering Ltd. (France)
ZAC de la Tremblaie, Av. de la Tremblaie 91220 Le Plessis Paté, France
T +33 (0) 160 76 60 00
E info@visioneng.fr

Vision Engineering (China)
Room 904B, Building B, No.970, Nanning Road, Xuhui Vanke Center Shanghai, 200235, P.R. China
T +86 (0) 21 5036 7556
E info@visioneng.com.cn

Vision Engineering (Brazil)
E info@visioneng.com.br

Vision Engineering (Latin America)
E infofmx@visioneng.com

Vision Engineering Ltd.
(Central Europe)
Anton-Pendele-Str. 3, 82275 Emmering, Deutschland
T +49 (0) 8141 40167-0
E info@visioneng.de

Nippon Vision Engineering (Japan)
272-2 Saedo-cho, Tsuduki-ku, Yokohama-shi, Kanagawa 224-0054, Japan
T +81 (45) 935 1117
E info@visioneng.jp

Vision Engineering (India)
T +91 (0) 80-5555-33-60
E info@visioneng.co.in



FM 557119

Vision Engineering Ltd. has been certified for the quality management system ISO 9001:2015 and calibration accreditation ISO 17025:2017.