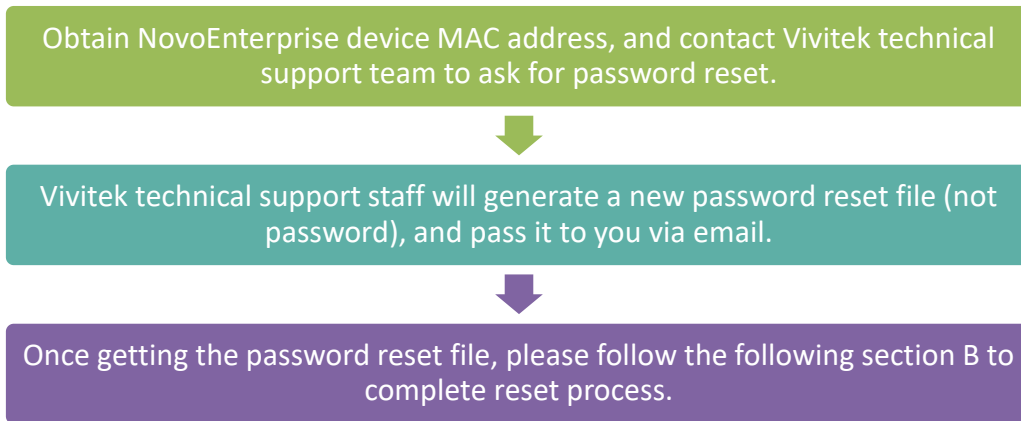


How to Reset NovoEnterprise Settings-Protection Password

If a NovoEnterprise’s Settings-Protection password is lost, you can follow the steps described in this application note to reset it.

The steps to reset password:



A. Obtain NovoEnterprise Device MAC Address

MAC address is usually located at the bottom of a NovoEnterprise device, and either Ethernet MAC or WiFi MAC is ok.



B. Reset NovoEnterprise Settings Protection Password

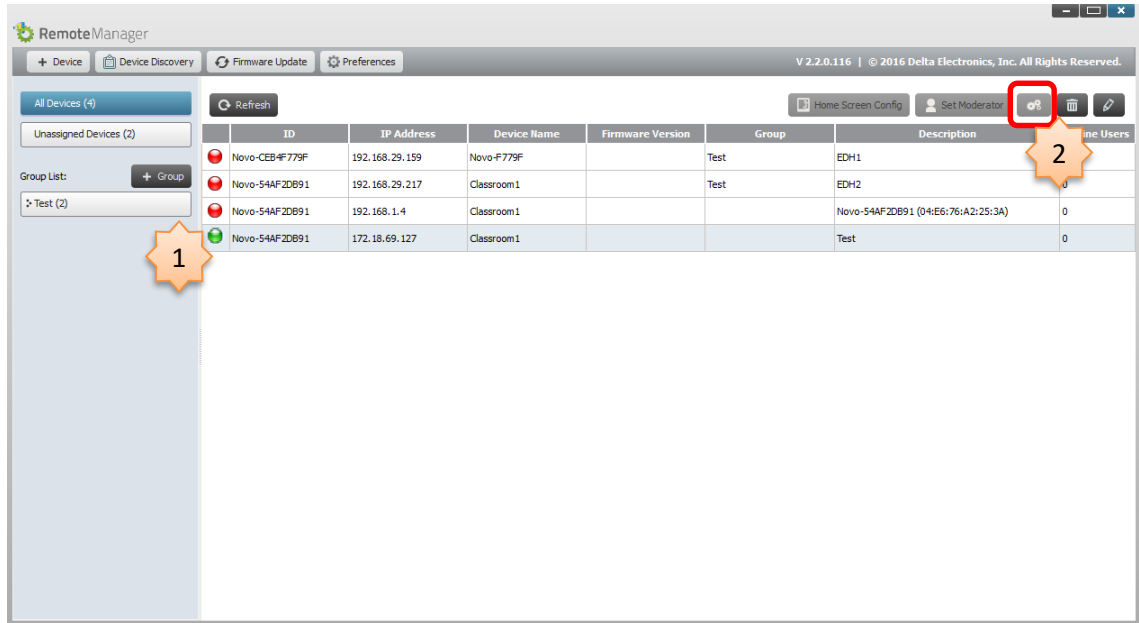
After you receive the password reset file, there are 2 ways to reset the password:

1. Through microSD card

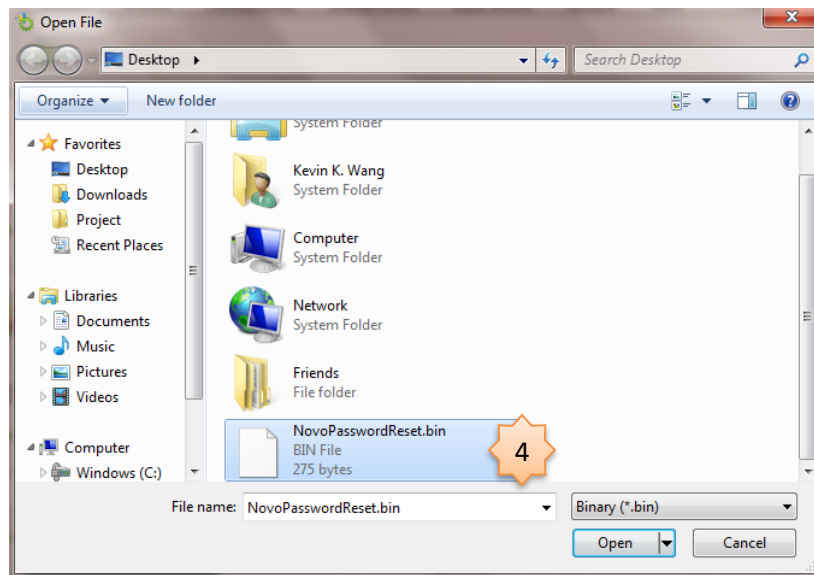
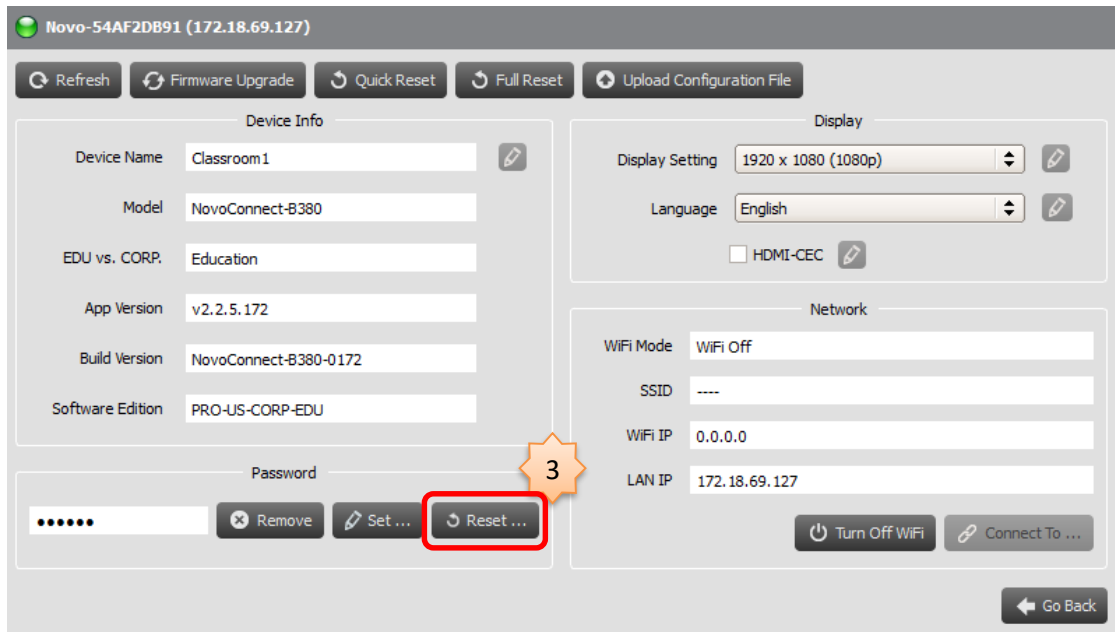
- 1.1. Copy the password-reset file to a microSD card;
- 1.2. Insert it to the NovoEnterprise device, and then the password will be reset in a few seconds.

2. Through Remote Manager

- 2.1. Locate the NovoEnterprise device from the device list;
- 2.2. Click on button “Settings”;



- 2.3. Click “Reset” button, and then select file “NovoPasswordReset.bin” received from Vivitek technical support;



2.4. The password will be reset within seconds.