



NovoScreenote

User Guide

Table of Contents

LEGAL NOTICE	3
1. INTRODUCTION	4
1.1 About NovoScreenote Software	4
1.2 System Requirements.....	4
2. INSTALLING NOVOSCREENOTE.....	5
2.1 Installing NovoScreenote on your PC (Windows).....	5
2.2 Installing NovoScreenote on your PC (Mac).....	9
3. WORKING WITH NOVOSCREENOTE	14
3.1 Overview	14
3.2 Annotation mode	16
3.3 Cut.....	16
3.4 Zoom	17
3.5 Screen Record.....	18
3.6 Document Camera.....	18
3.7 Email Screenshot	19
3.8 Settings.....	19
4. TROUBLE SHOOTING.....	21

Legal Notice

Copyright © Vivitek Corporation. All Rights Reserved.

The contents of this manual can be changed for product enhancement.

Part of or all of this manual cannot be changed or transmitted to other parties without permission of Vivitek corporation.

Information of Novo Interactive Tools

For latest information and software, please contact local sales representative.

1. Introduction

1.1 About NovoScreenote Software

NovoScreenote is a software application suite that turns your Interactive Projector into a powerful, fully integrated interactive digital presentation system. From classrooms to conference rooms, NovoScreenote helps you deliver dynamic presentations to students, prospective clients, or co-workers. With NovoScreenote software, you can display documents, access web pages, and play video on a projection screen that responds to the IR pens.

NovoScreenote allows you to

- Directly annotate on desktop screen, unobtrusive to applications currently running
- Save, record, and email these annotations

You can use the NovoScreenote software with or without the Interactive Projector to prepare an integrated, highly dynamic, and interactive presentation material. With the features provided, the NovoScreenote software helps you raise the level of participation in group discussions, design review meetings, brainstorming sessions, and sales demonstrations. Together with Interactive Projector, NovoScreenote is the perfect solution for more effective teaching, meetings, general presentations, and team oriented collaboration.

1.2 System Requirements

You can get the best results from the NovoScreenote software if your computer has the necessary components to support all its' features.

	Minimum requirement
CPU	Intel ® Core™, 2GHz or higher (i5 and above are preferred)
OS	Windows XP and Windows 7 (32 bits and 64 bits) Mac OS X v10.7 and later
RAM	4GB

2. Installing NovoScreenote

2.1 Installing NovoScreenote on your PC (Windows)

The installation wizard guides you through the NovoScreenote setup process on your computer.

To start the installation, follow these steps:

1. Insert Novo Interactive Tools CD into the CD-ROM drive.
2. Click “Install NovoScreenote” and follow the screen prompts.



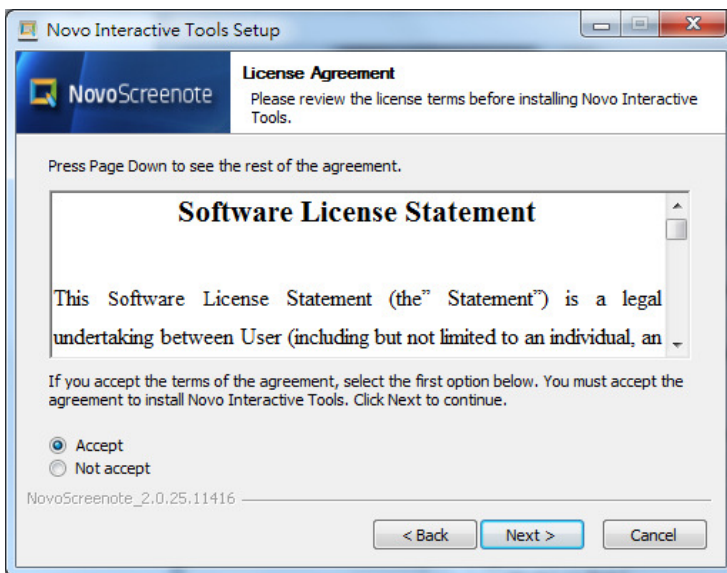
3. Select your preferred language. Click **OK** to proceed.



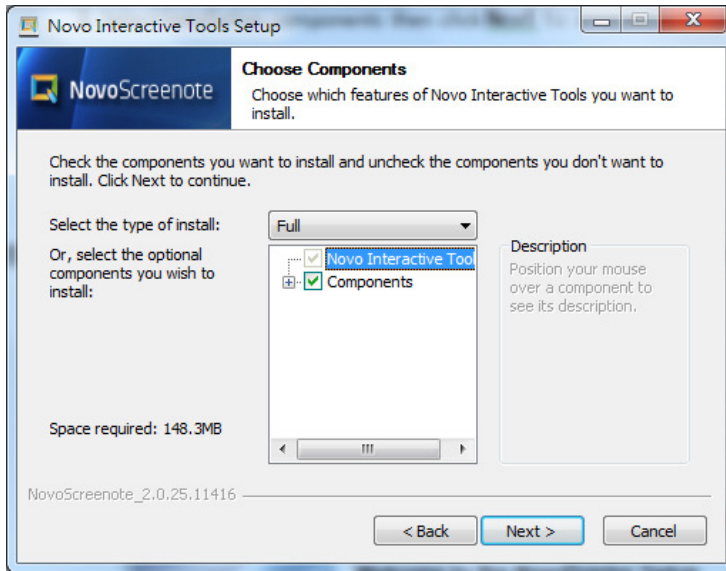
4. Close all other applications and click **Next** to proceed.



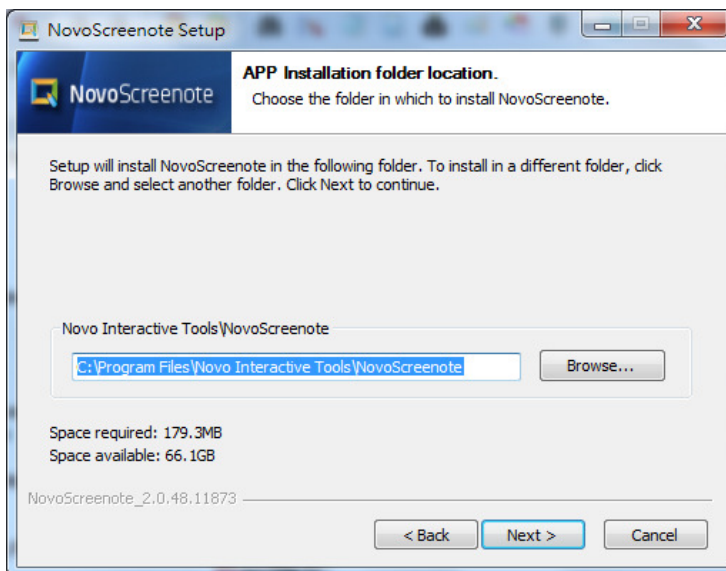
5. Read the license agreement and select **Accept** then click **Next** to proceed.



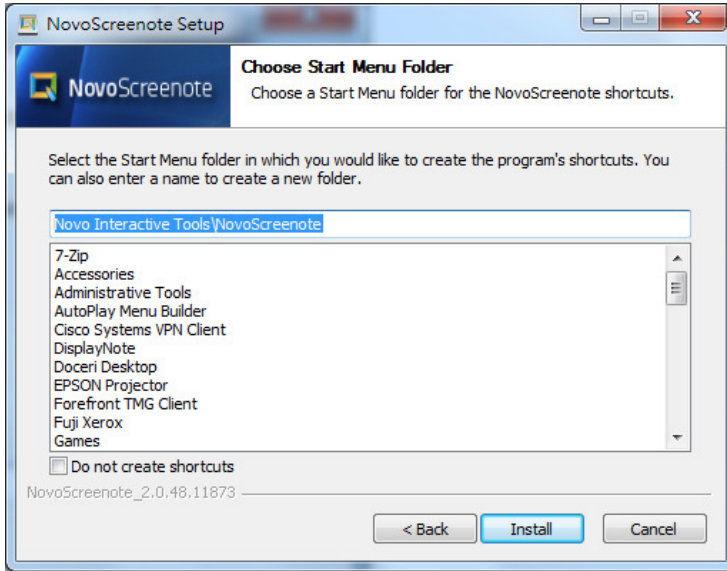
6. View installation components then click **Next** to proceed.



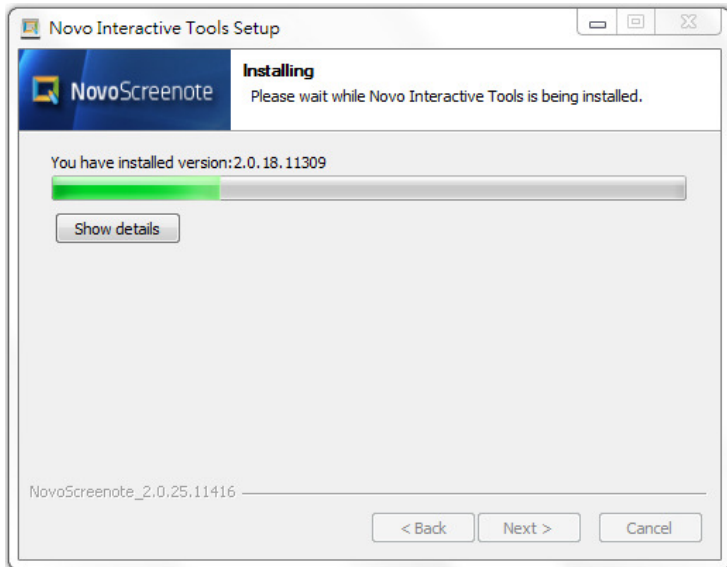
7. Select the destination folder then click **Next** to proceed.



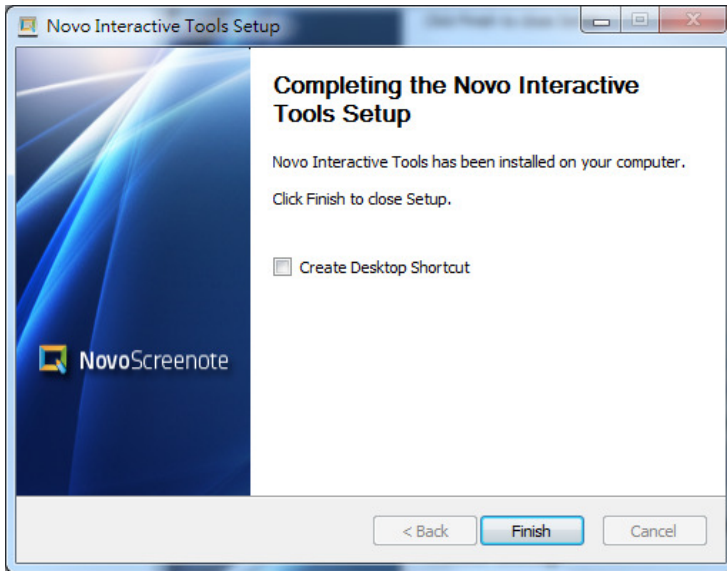
8. Select the Start Menu folder where you'd like to create the NovoScreenote shortcut. Then click **Install** to proceed.




The Installation progress screen is shown below.



9. Check Create Desktop Shortcut and click **Finish** to complete the installation.



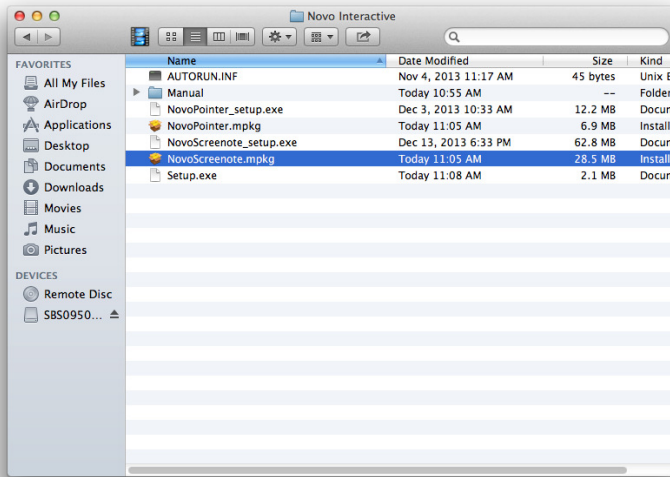
10. Once you are done with the setup and you select to create desktop shortcut, you should see the following icons under NovoScreenote program group .

2.2 Installing NovoScreenote on your PC (Mac)

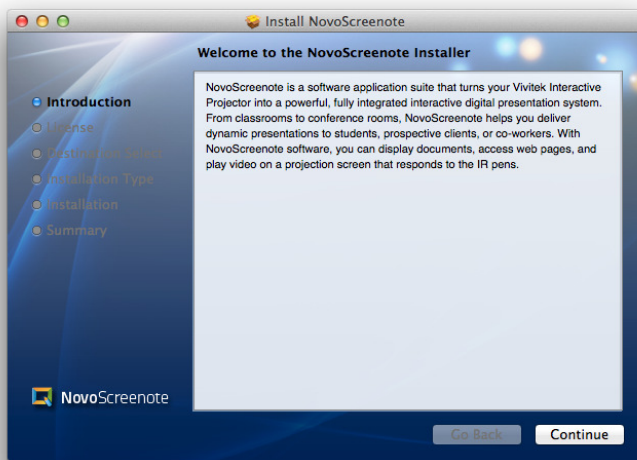
The installation wizard guides you through the NovoScreenote setup process on your computer.

To start the installation, follow these steps:

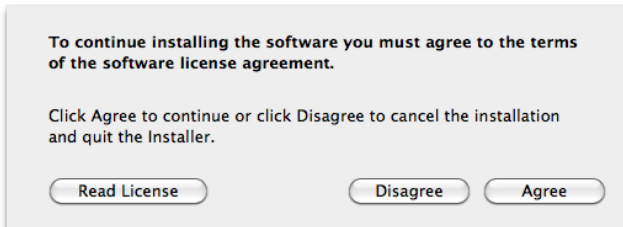
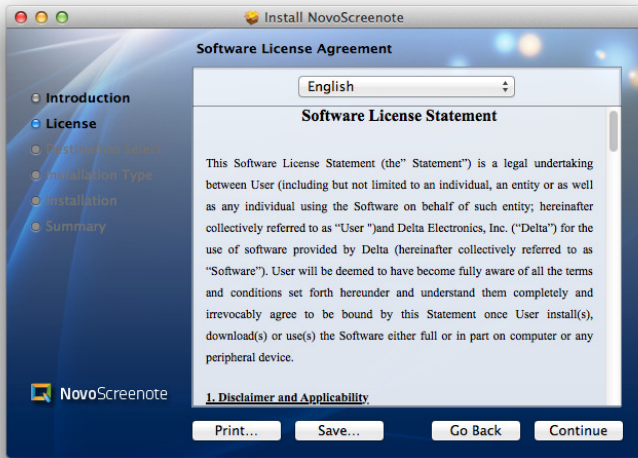
1. Insert Novo Interactive Tools CD into the CD-ROM drive. The disc icon is displayed on your desktop, then double-click the disc icon.
2. When the disc contents are displayed, double-click the **NovoScreenote.mpkg** icon and follow the screen prompts.



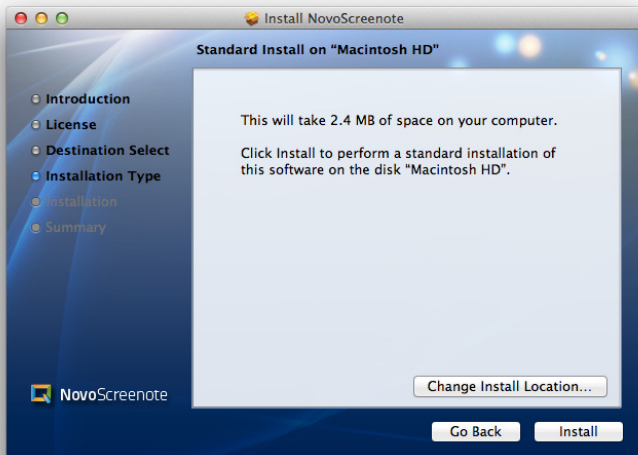
3. The installation start screen is displayed. Click **Continue** to proceed.



5. Read the Software License Agreement and select **Continue** then click **Agree** to proceed.



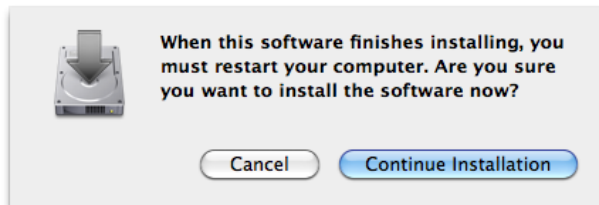
6. The installation screen is displayed. If you want to install as default settings, click **Install**. If you want to change the installation destination, click **Change Installation Location....**



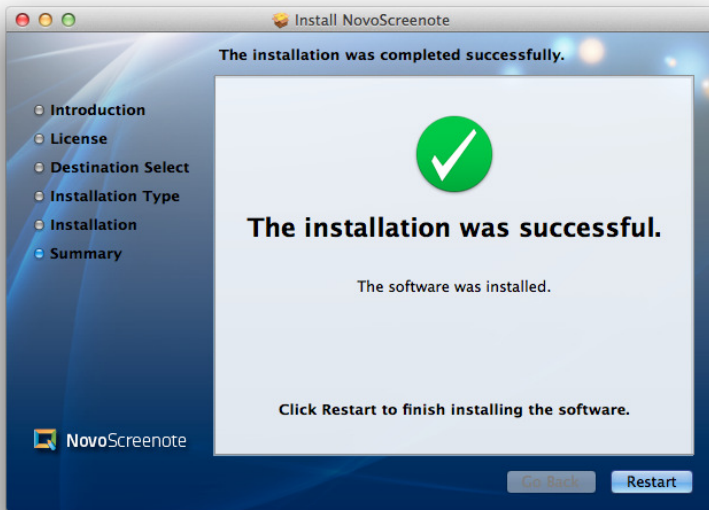
7. Enter the information of a user with administrator rights for the computer, and then click **Install Software**.



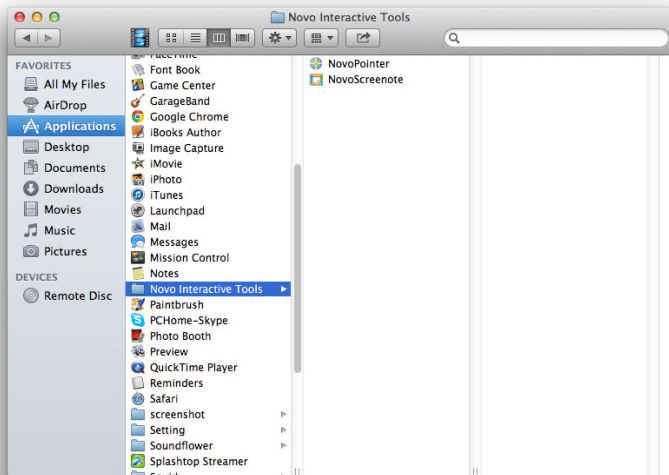
8. A confirmation screen about restarting after the end of installation is displayed. Click **Continue Installation**.




9. After installation, the setup finishing screen is displayed. Depending on your computer, restarting confirmation screen is displayed. In this case, be sure to restart your computer before you start using NovoScreenote.



10. NovoScreenote Software can be started from Finder. Select **NovoScreenote** from **Applications**.

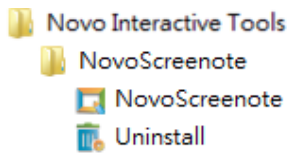



11. You can see the following icons  in the Application folder Novo Interactive Tools.

3. Working with NovoScreenote

3.1 Overview



Connect the Interactive Projector USB Plug to the USB port of the PC before using the software NovoScreenote.


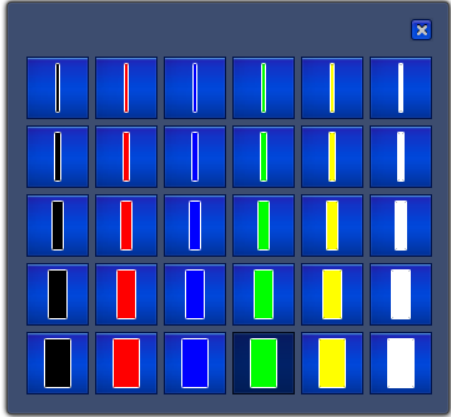
















When you first open  NovoScreenote, you will see the display below on the left side of your desktop screen.




The NovoScreenote software provides a shortcut for the following functions. Please note that the Markers, Highlighter, and Eraser are “sticky function” and you need to click the Cursor Mode button to exit them.

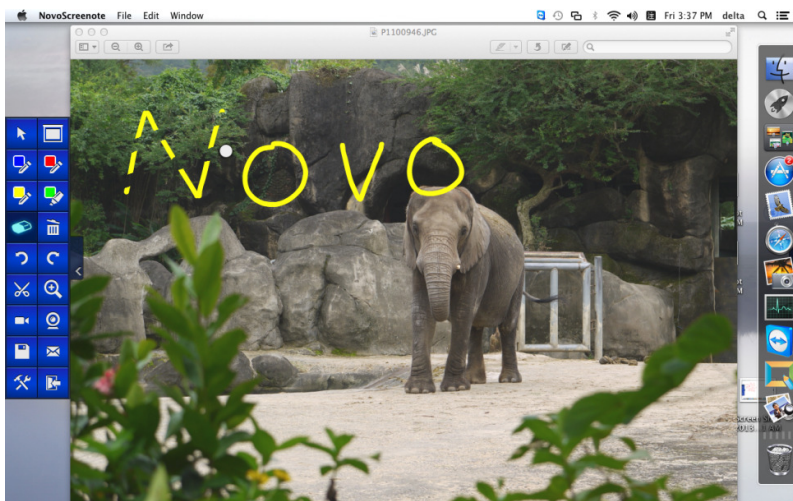
Icon		Usage
	Cursor Mode	Cursor mode is used to exit from Annotation mode. Click the button to enter Cursor mode. Click markers or highlighter to enter Annotation mode.
	Blank Page	Click to make whole desktop into a blank page. Click again to restore to desktop mode. The annotation will be kept separately in desktop mode or Blank page mode.

	<p>Markers</p>	<p>Click any one of marker icons to write and draw on the desktop or Blank Page. Click again to select the line thickness and color through the dialog box.</p> 
	<p>Highlighter</p>	<p>Click to highlight any objects with a virtual highlighter. Click again to select the line thickness and color through the dialog box.</p>
	<p>Eraser</p>	<p>Click to erase drawing with a virtual eraser.</p>
	<p>Clear</p>	<p>Clear all annotation on the desktop or blank page.</p>
	<p>Undo</p>	<p>Undo the last change (applicable for up to fifteen levels into the activity history).</p>
	<p>Redo</p>	<p>Restore the last change.</p>
	<p>Cut</p>	<p>Cut can be used to copy a selected rectangular region and store it in the system clipboard.</p>
	<p>Zoom</p>	<p>Zoom in on a selected area. The annotation made on the Zoom window will be applied to the desktop or blank page after terminate the Zoom Window.</p>
	<p>Screen Record</p>	<p>The screen record function lets you record all actions performed and displayed on the desktop, as well as the audio output, during a presentation. The recording is saved as an AVI file in predefined workspace.</p> <p>Stop the recording by clicking .</p>
	<p>Document Camera</p>	<p>Perform real-time video presentation by using your PC's webcam or a document camera device. An example usage of the document camera is to display the content of a book or document.</p>



	Save Screen	Save the current page as a PNG image file. The image file will be saved to predefined workspace.
	Email Screenshot	Email the current screenshot as an attachment via default email application. The supported file formats are: - Adobe Reader file (PDF) - Image (JPG/ PNG)
	Settings	Configure the system settings, such as workspace path, language, attachment file format, and video quality of screen recording.
	Exit	Exit the application.

3.2 Annotation mode



You can use Markers, Highlighters and  Eraser to make annotation on the desktop or Blank Page. You can make annotation up to 5 IR pens at the same time.

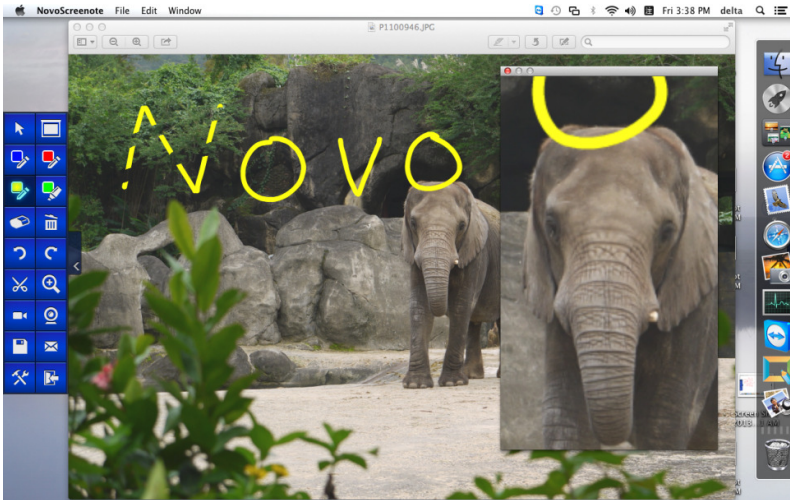


3.3 Cut

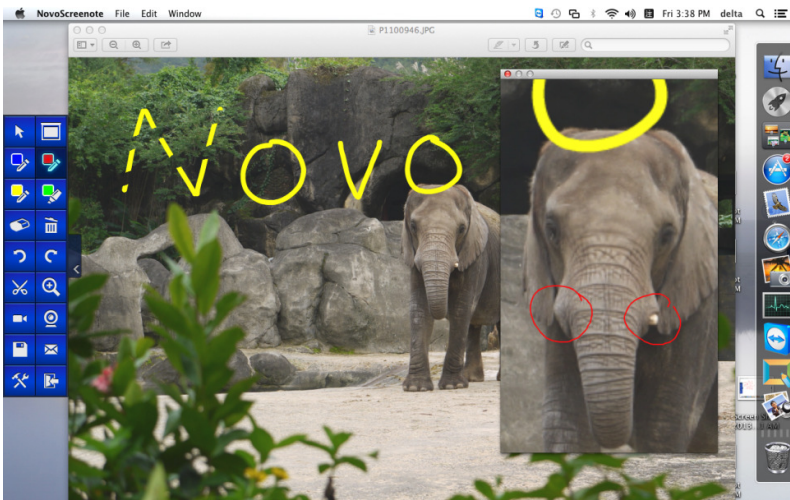
Click  and use cursor  to select a rectangle area on the screen. The selected area will be saved into clipboard.

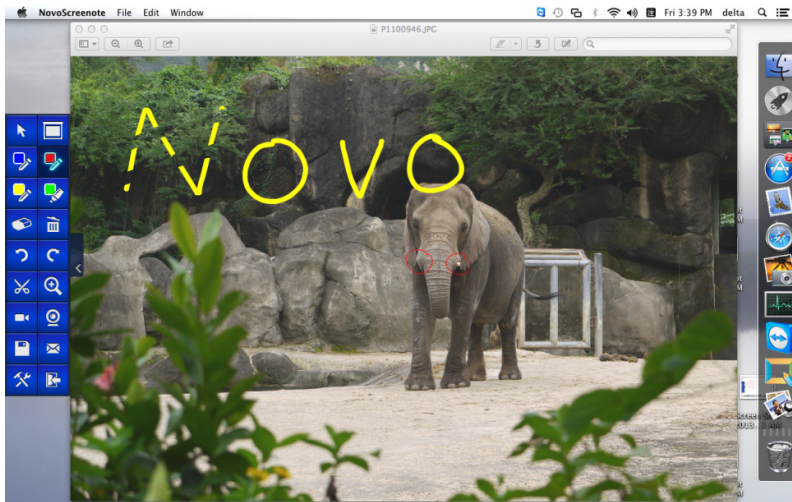
3.4 Zoom

Click  and use cursor  to select a rectangle area on the screen. The selected area will be enlarged and displayed in the dialog.





The annotation made on the Zoom window will be applied to the desktop or blank page after terminate the Zoom Window.




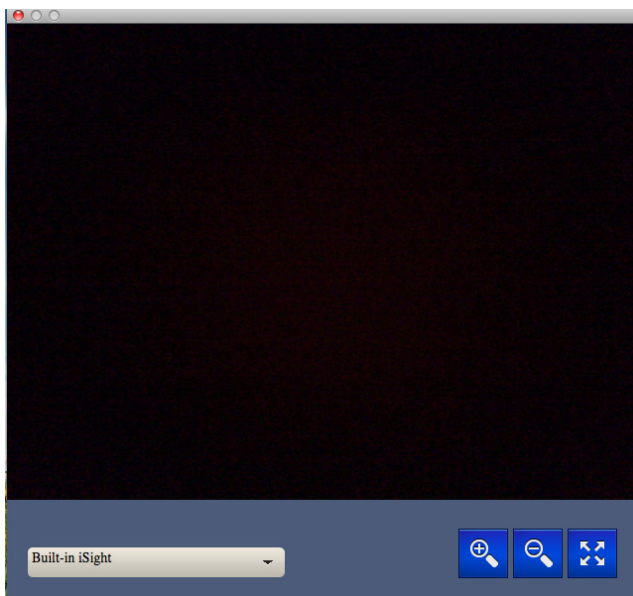



3.5 Screen Record


Click  to start recording all actions performed and displayed on the desktop. A time counter will be shown on the top of the screen. Click  to stop recording.


3.6 Document Camera

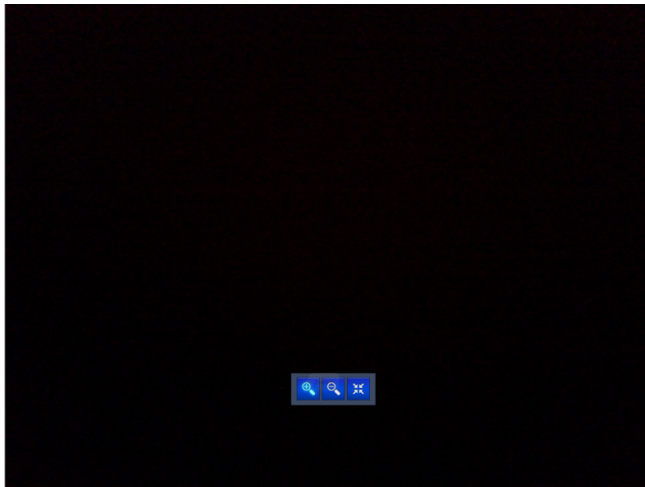
Click  to launch embedded web camera or document camera screen as below.




Click  to zoom in the camera.


Click  to zoom out the camera.

Click  to make camera in full screen mode as below screen




Click  to exit the full screen mode.

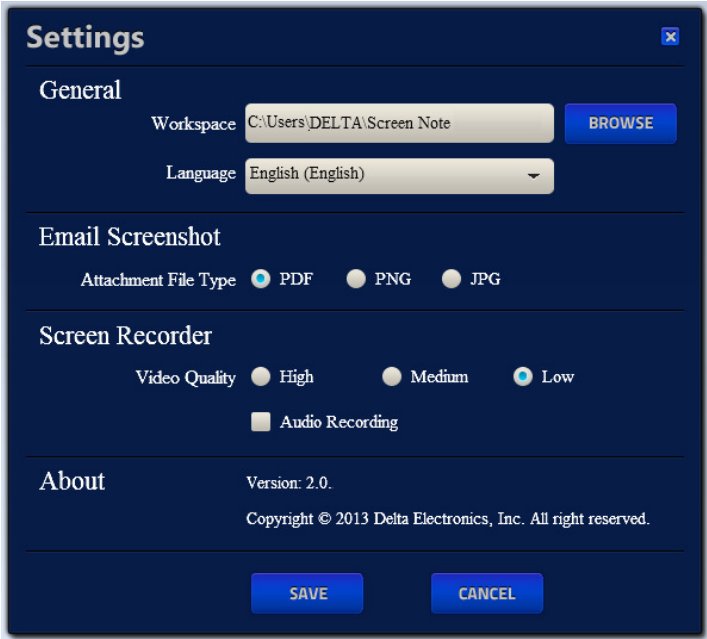
3.7 Email Screenshot

Click  to launch default Email application and attached with current screenshot in pre-set file format.

3.8 Settings

Click  to launch Settings dialogue, click button again to close the dialogue.

You can browse a different workspace for files generated by function Screen Record, Save Screen or Email Screenshot.



4. Troubleshooting

This chapter describes commonly-found issues and solutions when using NovoScreenote.

I can't install NovoScreenote.

Log on as Administrator to install/uninstall NovoScreenote.

On Mac, please make sure the OS version is 10.7 or above.

Multi-touch doesn't work for me on Windows 7.

After NovoPointer software is installed, multi-touch function will be automatically enabled. Alternatively, you can go to [Control Panel]->[Programs and Features]->[Turn Windows feature on or off] to enable [Tablet PC Components].

NovoScreenote and Microsoft Paint are two of the software programs that support multi-touch operations.

I can't annotate the screen using two pens simultaneously.

Please install NovoPointer software to enable multi-touch feature, as described in the above-mentioned issue.

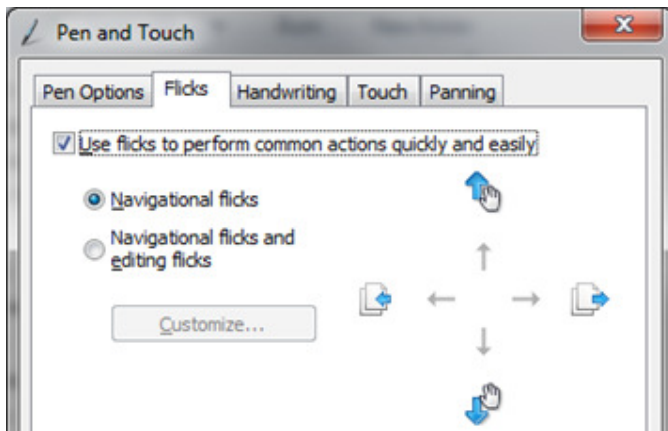
It says "No camera device found." But I do have a camera device connected.

NovoScreenote does not support plug-and-play device detection. Please enable the camera device connected to the PC before launching NovoScreenote.

While I am making on-screen annotation, some gesture indicators keep popping up which is quite annoying.

These indicators are called "flicks" in Windows 7. You need to turn off this feature to prevent these indicators from showing up. Here are the steps:

1. Select [Start] -> [Control Panel] -> [Pen and Touch]. Then a "Pen and Touch" dialog pops up.
2. Uncheck "Use flicks to perform common actions quickly and easily" in tab "Flicks."
3. Click button "OK."



While I am annotating the screen, my “drawing” seems very slow to appear.

This problem is likely caused by a slow CPU, insufficient memory (RAM), or improper configuration of the computer’s graphics controller.

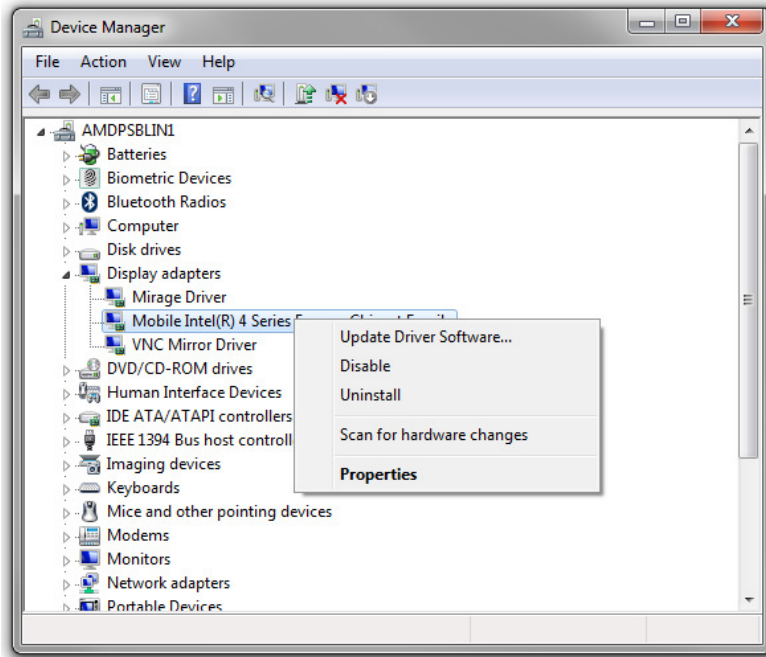
1. Ensure the hardware resources on your PC are adequate. The hardware requirements can be found in section 1.2 “System Requirements” of this manual.
2. Close unnecessary applications or desktop widgets to free up more CPU power and memory.
3. Check the graphics controller’s settings of the computer. Usually this issue can be fixed by installing the latest graphics driver from your computer supplier. Additionally, you may need to tune some parameters to improve its performance. The followings are two examples of doing so.

3.1 Installing Latest Graphics Driver

Step 1. Download the latest graphics driver from your computer supplier.

Step 2. Select [Start] -> [Control Panel] -> [Device Manager]. You should see a list of the devices installed on this computer. Expand “Display adapters” to show the graphics controller used on your system. Right-click on this item to bring up a popup menu, which you can select to “Update Driver Software” or “Uninstall.”

To do a clean re-installation, you may select “Uninstall” to proceed.

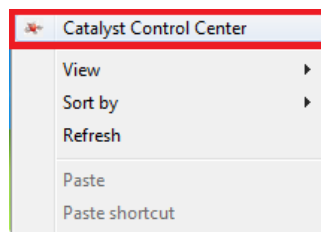


Step 3. Then, follow the on-screen instructions and you should be able to install a new graphics driver.

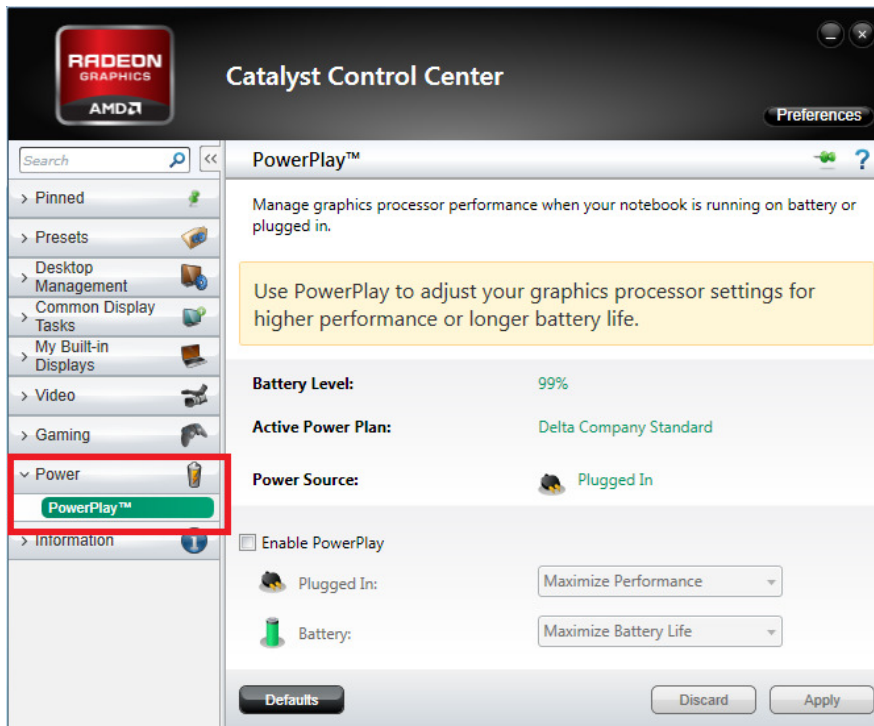
3.2 Parameter Tuning

Some graphics driver software has some advanced control options. For example, if you are running AMD (ATI) Catalyst Control Center, you will need to set the PowerPlay setting to “Maximize Performance.” Here are the steps.

Step 1. Open the Catalyst Control Center by right-clicking the desktop and selecting “Catalyst (TM) Control Center”.



Step 2. Select menu item “PowerPlay.”



- Step 3. Check “Enable PowerPlay.”
- i. Set “Plugged in” setting to “Maximize Performance”
 - ii. Set “Battery” setting to “Maximize Performance”
- Then, click “Apply” to confirm.

