

## Novo Lookup Service

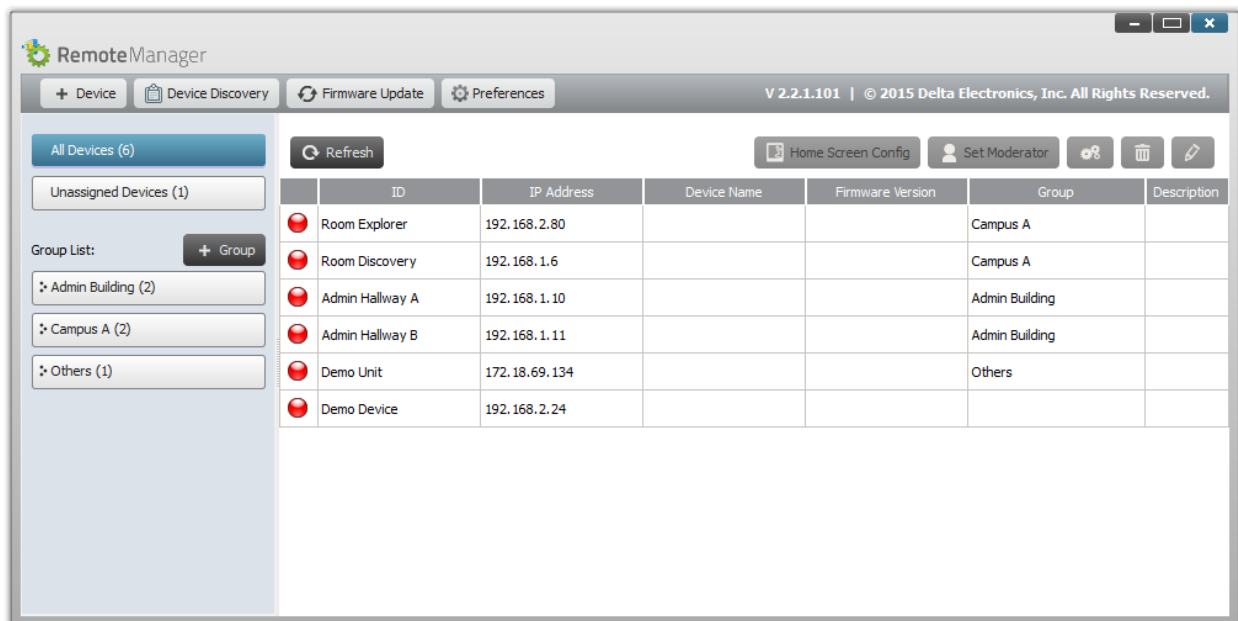
When NovoPRO devices are deployed in an office building or a campus, users might find that Desktop Streamer software and NovoPresenter App may not be able to discover nearby NovoPRO devices due to subnet structure or network policy.

To mitigate this issue, IT administrators can use Remote Manager software to set up a Novo Lookup Service, from which Desktop Streamer software and NovoPresenter App can obtain a list of NovoPRO devices deployed.

This application note describes how to do so.

### 1. Setting Up Remote Manager

- (1) Install Remote Manager software on a computer that is used for system administration purpose.
- (2) Launch Remote Manager and enter a list of NovoPRO devices in your deployment. The following figure is an example.



- (3) Take a note of the IP address of this computer. For example, let’s say it is “172.18.69.189”. The Novo Lookup Service, which is part of Remote Manager software, is listening for queries at this IP address.
- (4) Keep Remote Manager running. This is all you would need to do.

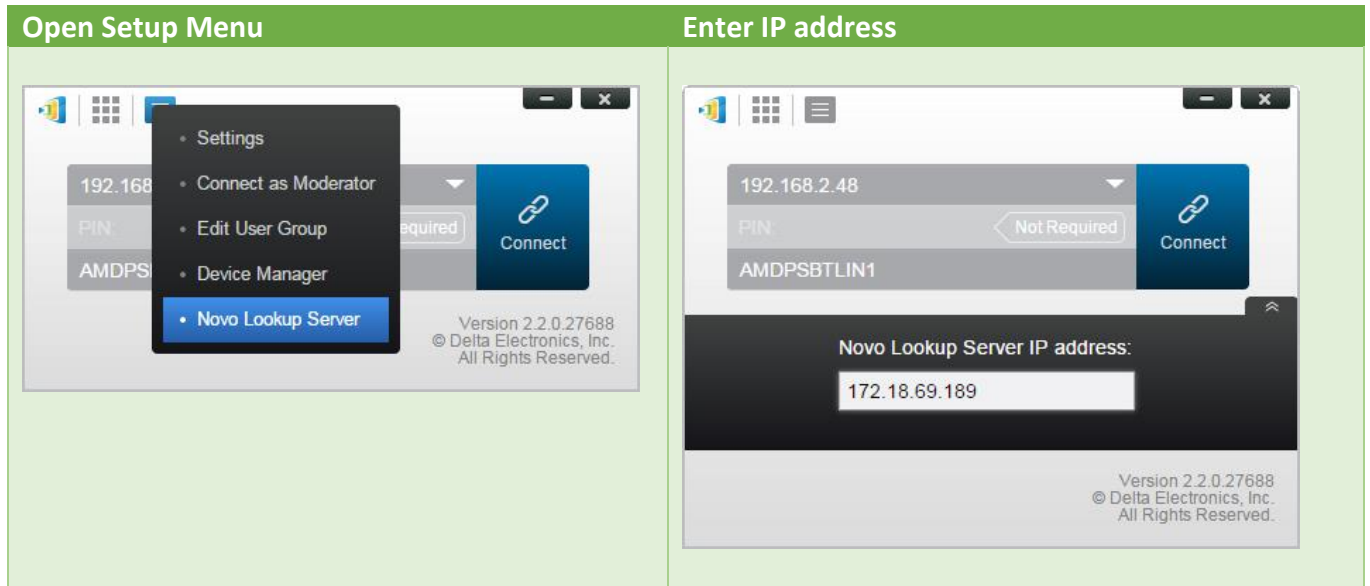
## 2. Using Novo Lookup Service

We use Desktop Streamer software as an example to illustrate how to use this lookup service. (NovoPresenter App follows similar usage pattern.)

### (1) Specifying Novo Lookup Service on Client Software

Basically, we tell Desktop Streamer from which IP address it can obtain a list of NovoPRO devices. In the example of Section 1, the IP address is "172.18.69.189"

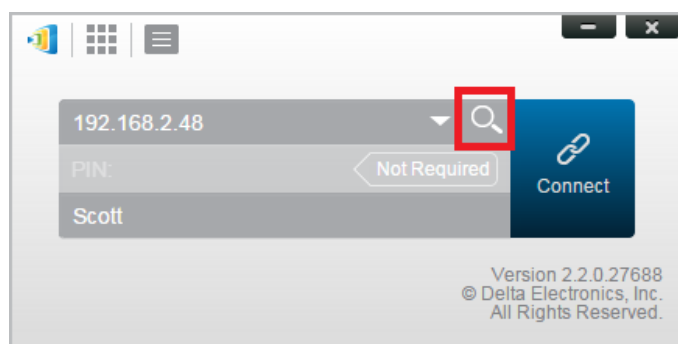
To specify the IP address, follow the following two figures.



### (2) Using the Lookup Service.

Once the Lookup Server IP is entered, Desktop Streamer software will automatically try to obtain the list of NovoPRO devices registered in Remote Manager.

If it obtains the list successfully, a "Search" icon, highlighted in red in the following figure, will appear.



Click on the “Search” icon and then you will see the list of NovoPRO devices available in your deployment. Click on the right one and then you can start connecting to it.

