



<b>EAN:</b>	4013288218162	<b>Size:</b>	275x175x60 mm
<b>Part number:</b>	05137812001	<b>Weight:</b>	1114 g
<b>Article number:</b>	Kraftform 900/7 Set 2	<b>Country of origin:</b>	CZ
		<b>Customs tariff number:</b>	82054000

- 7-piece set in compact, textile box with Wera 2go compatibility
- Chiseldriver for fastening, chiselling and loosening
- With pound-thru hexagon blade, impact cap and wrench aid
- Smooth hard zones for high speed turning, soft grip zones for high torque transfer
- With Wera bottle opener

6-piece Wera chiseldriver set for screwdriving, chiselling, mortising and slackening stuck screws. With a multi-component Kraftform handle for fast and gentle work. Kraftform Plus: Hard handle zones for high working speeds, while soft handle zones guarantee high torque transfer. With pound-thru hexagon blade made of premium bit material, thereby giving lossless power transmission even with hammer blows. Tough tempered material to prevent the blade from chipping or breaking. With integrated impact cap to increase service life and reduce risk of splintering. The Wera Black Point tip and a sophisticated hardening process guarantee a long usability of the tip, increased corrosion protection and exact fitting accuracy. With hexagon anti-roll protection to avoid bits from annoying rolling away in the workplace. Plus iconic Wera bottle opener.



**Web link**

[https://products.wera.de/en/screwdrivers\\_kraftform\\_plus\\_series\\_900\\_kraftform\\_900\\_7\\_set\\_2.html](https://products.wera.de/en/screwdrivers_kraftform_plus_series_900_kraftform_900_7_set_2.html)

Wera - Kraftform 900/7 Set 2  
05137812001 - 4013288218162

Wera Werkzeuge GmbH  
Korzter Straße 21-25  
D-42349 Wuppertal  
Tel: +49 (0)2 02 / 40 45-0  
E-Mail: info@wera.de

**Suitable for Wera 2go**

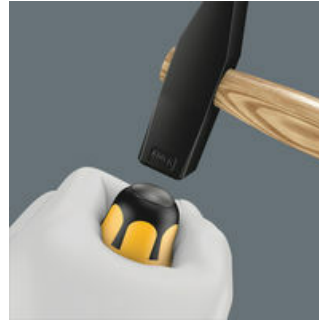


Screwdrivers are often misused as chisels. This can be dangerous. The chiseldriver is the solution when not only screwdriving is required. For fastening, chiselling and loosening seized screws. Wera chiseldriver: the screwdriver whenever the going gets tough!



Suitable for docking with the Wera 2go system.

**Integrated impact cap**



An integrated impact cap lengthens the service life and reduces the danger of splintering. Nevertheless, always wear protective goggles.

**Pound-thru blade**



A hexagon blade made out of high-quality bit material extends right through the handle - thereby ensuring full transfer of force, even when struck with a hammer. The ductile tempered material prevents the blade from splintering or breaking.

**Integrated hex bolster**



Greater torque can be transferred by fitting an open-jaw or ring spanner over the integrated hex bolster.

**Wera Black Point tip**



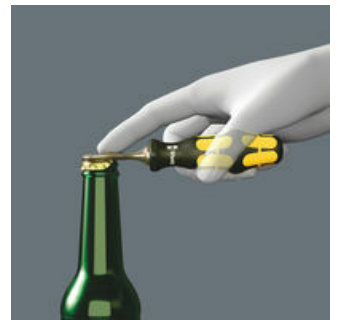
The Wera Black Point tip and a refined hardening process ensure long service life of the tip, improved corrosion protection and an exact fit.

**Multicomponent Kraftform handle**



Wera makes its Kraftform handles from several materials with different properties. The core is made from a hardwearing plastic that holds the blade securely even when subjected to great forces. The yellow soft zones of the external mantle consist of a softer material with more friction resistance for high torque transfer. The black areas with a harder surface prevent the hand from sticking to the handle enabling you to adjust your grip more quickly.

**Convenient**



Plus iconic Wera bottle opener.

**Web link**



[https://products.wera.de/en/screwdrivers\\_kraftform\\_plus\\_series\\_900\\_kraftform\\_900\\_7\\_set\\_2.html](https://products.wera.de/en/screwdrivers_kraftform_plus_series_900_kraftform_900_7_set_2.html)

Wera - Kraftform 900/7 Set 2  
05137812001 - 4013288218162



Wera Werkzeuge GmbH  
Korzter Straße 21-25  
D-42349 Wuppertal  
Tel: +49 (0)2 02 / 40 45-0  
E-Mail: info@wera.de

Set contents:

917 SPH Screwdriver for Phillips screws, PH 1 x 80 mm


	05017005001	1x	PH 1 x 80 mm
	05017010001	1x	PH 2 x 100 mm

932 A Screwdriver for slotted screws, 0.6 x 3.5 x 80 mm


	05018260001 <sup>1)</sup>	1x	0.6 x 3.5 x 80 mm
	05018262001	1x	0.8 x 4.5 x 90 mm
	05018264001	1x	1 x 5.5 x 100 mm
	05018266001	1x	1.2 x 7 x 125 mm

1) No throughout blade, no impact cap and no hexagon bolster

Bottle opener black/yellow, 145

	1x	145
---	----	-----

Hook and Loop Fastener Strip 240, 50 x 240 mm

	1x	50 x 240 mm
---	----	-------------

Web link

[https://products.wera.de/en/screwdrivers\\_kraftform\\_plus\\_series\\_900\\_kraftform\\_900\\_7\\_set\\_2.html](https://products.wera.de/en/screwdrivers_kraftform_plus_series_900_kraftform_900_7_set_2.html)

Wera - Kraftform 900/7 Set 2  
05137812001 - 4013288218162

Wera Werkzeuge GmbH  
Korzter Straße 21-25  
D-42349 Wuppertal  
Tel: +49 (0)2 02 / 40 45-0  
E-Mail: [info@wera.de](mailto:info@wera.de)