

Magnetic socket rail A 4 Zyklop socket set, 1/4" drive, 9 pieces

Zyklop Accessories, 1/4"



EAN:	4013288223197	Size:	275x75x35 mm
Part number:	05005400001	Weight:	365 g
Article number:	Socket Rail A 4	Country of origin:	TW
		Customs tariff number:	82042000

- 9-piece socket set on socket rail, 1/4"
- Rail with secure bit mounting and yet easy removal (twist-to-unlock) for temporary attachment on wall, shelf or workshop trolley
- Smooth Twist to Unlock mechanism for a secure fit and simple removal of the sockets
- With Take it easy tool finder: colour coding by size
- For manual and power tool operations (non-impact)
- Equipped with ball stop groove, knurling at lower end for better gripping

Socket rail with 9 manual and machine sockets (non-impact), 1/4". A smooth rotary mechanism allows a secure hold and easy access of the sockets. With Take it easy tool finder with colour coding by size - to help you find the required tool quickly and easily. The rail allows temporary attachment to metallic surfaces and, with its twist-to-unlock function, ensures secure locking and unlocking of the sockets.

Web link

https://products.wera.de/en/zyklop_ratchets_and_accessories_the_zyklop_ratchets_the_zyklop_ratchets_1_4_zyklop_accessories_1_4_socket_rail_a_4.html

Wera - Socket Rail A 4
05005400001 - 4013288223197

Wera Werkzeuge GmbH
Korzter Straße 21-25
D-42349 Wuppertal
Tel: +49 (0)2 02 / 40 45-0
E-Mail: info@wera.de

Magnetic socket rail A 4 Zyklop socket set, 1/4" drive, 9 pieces



Zyklop Accessories, 1/4"

Manual and machine sockets



The manual and machine sockets can be used both for hand and power tools use (non-impact). Users need just one socket set for all applications.

Knurling



Knurling on lower end for more grip when used manually.

Take it easy tool finder system



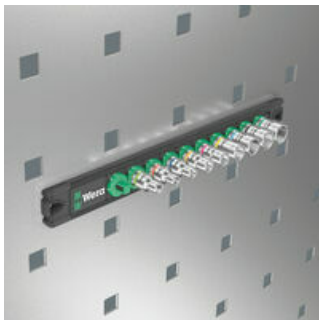
Take it easy tool finder system - with profile and size colour-coding for quick and easy tool selection. Colour-coded system for hexagon drive screws (L-Keys, Zyklop bit sockets), external hex drive screws and nuts (Joker wrenches, Zyklop sockets and Zyklop bit sockets with holding function), and TORX® drive screws (L-Keys, Zyklop bit sockets).

Twist-to-unlock mechanism



With its twist-to-unlock mechanism the socket rail ensures easy access of the sockets. At the same time the sockets are held securely.

Magnetic



Thanks to the magnet, the rail is suitable for temporary attachment to the wall, shelf or workshop trolley.

Web link

https://products.wera.de/en/zyklop_ratchets_and_accessories_the_zyklop_ratchets_the_zyklop_ratchets_1_4_zyklop_accessories_1_4_socket_rail_a_4.html

Wera - Socket Rail A 4
05005400001 - 4013288223197

Wera Werkzeuge GmbH
Korzter Straße 21-25
D-42349 Wuppertal
Tel: +49 (0)2 02 / 40 45-0
E-Mail: info@wera.de

Magnetic socket rail A 4 Zyklop socket set, 1/4" drive, 9 pieces

Zyklop Accessories, 1/4"



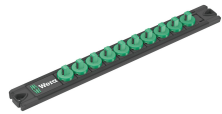
Set contents:

8790 HMA Zyklop 1/4" socket, 5 x 23 mm



05003503001	1x	5 x 23 mm
05003504001	1x	5.5 x 23 mm
05003505001	1x	6 x 23 mm
05003506001	1x	7 x 23 mm
05003507001	1x	8 x 23 mm
05003509001	1x	10 x 23 mm
05003510001	1x	11 x 23 mm
05003511001	1x	12 x 23 mm
05003512001	1x	13 x 23 mm

9600 Magnetic socket rail, 1/4", empty, 30 x 270 mm



05136420001	1x	30 x 270 mm
-------------	----	-------------

Web link

https://products.wera.de/en/zyklop_ratchets_and_accessories_the_zyklop_ratchets_the_zyklop_ratchets_1_4_zyklop_accessories_1_4_socket_rail_a_4.html

Wera - Socket Rail A 4
05005400001 - 4013288223197

Wera Werkzeuge GmbH
Korzter Straße 21-25
D-42349 Wuppertal
Tel: +49 (0)2 02 / 40 45-0
E-Mail: info@wera.de