

THREE INPUT SELF-AMPLIFIED FOUR SPEAKER WIRING DIAGRAM

For OWI MODELS AMP3S64

Optional Accessories

INPUT/SOURCE

PROJECTOR,
LAPTOP,
MICROPHONE,
CD, DVD or
MP3 PLAYERS



OWI
OWI Incorporated

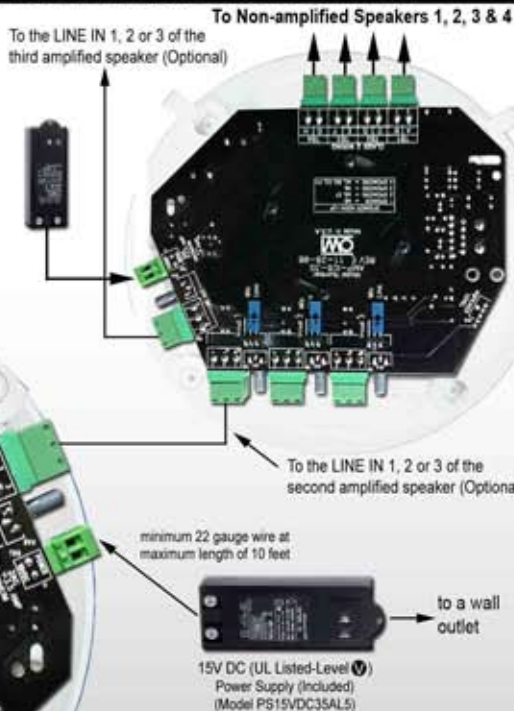
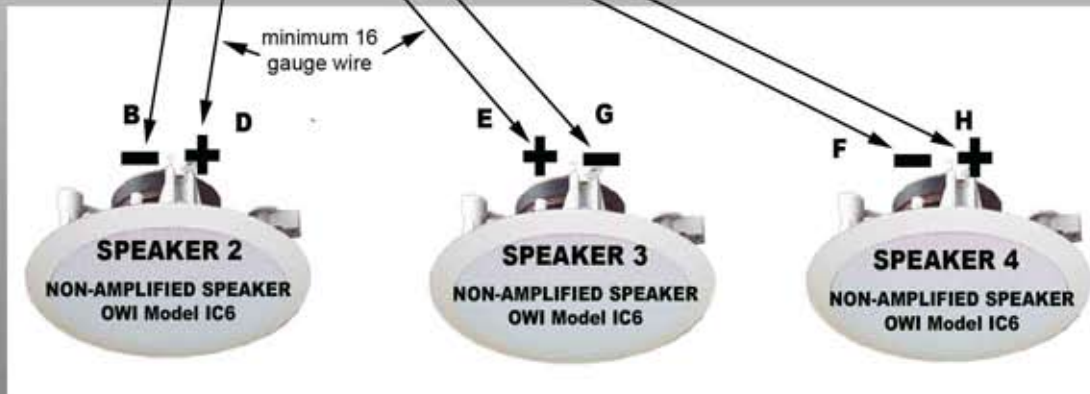
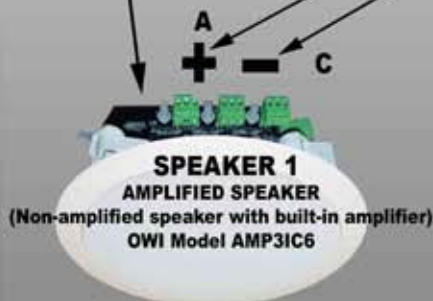
WWW.OWI-INC.COM

310-515-1900

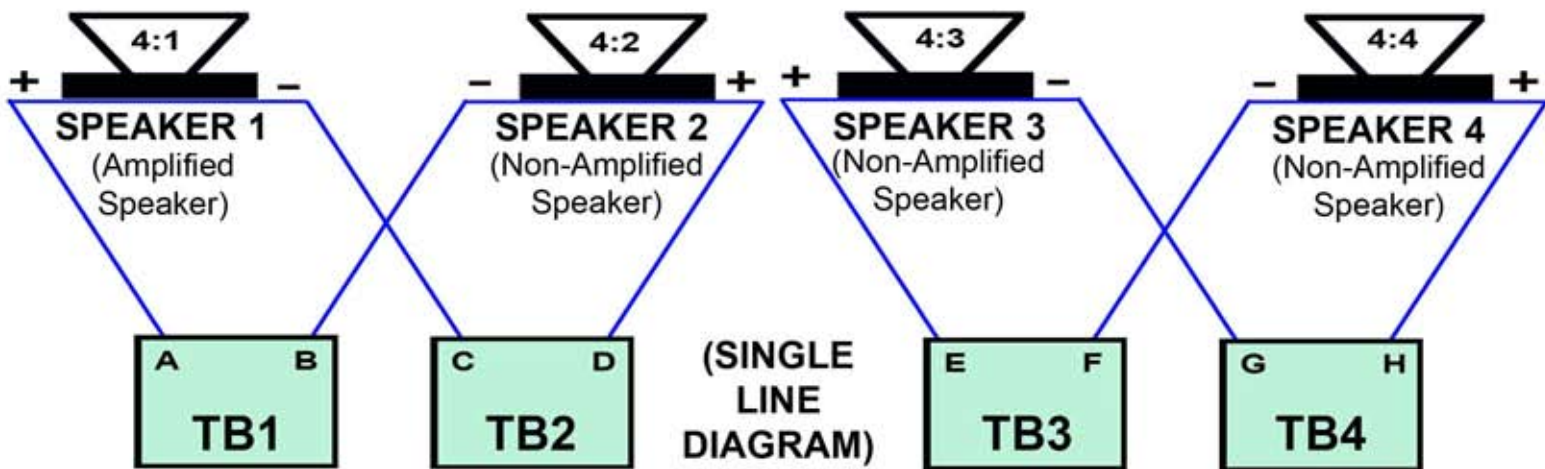
Tech Support
800.638.1694

Three Input
Amplifier PC Board
installed at the
back of Speaker 1

Note: Speaker 1 wires A & B are factory installed with A connected to the positive and B connected to the negative of Speaker 1. For the 4 speaker combination, please remove the speaker wire from B on the PCboard and connect to C and follow the wiring diagram below for the three (3) non-amplified speakers.



FOUR (4) SPEAKER COMBINATION DETAILED WIRING DIAGRAM



Touchboards FOUR (4) SPEAKER HOOK UP