

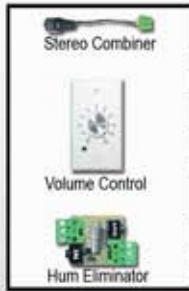
THREE INPUT SELF-AMPLIFIED SINGLE SPEAKER WIRING DIAGRAM

For OWI MODELS AMP3S61 and AMP3IC6

Optional Accessories

INPUT/SOURCE

PROJECTOR,
LAPTOP,
MICROPHONE,
CD, DVD or
MP3 PLAYERS



OWI
OWI Incorporated
WWW.OWI-INC.COM
310-515-1900
Tech Support
800.638.1694

minimum 16 gauge wire

To the LINE IN 1, 2 or 3 of the
third amplified speaker (Optional)

Non-amplified Speaker

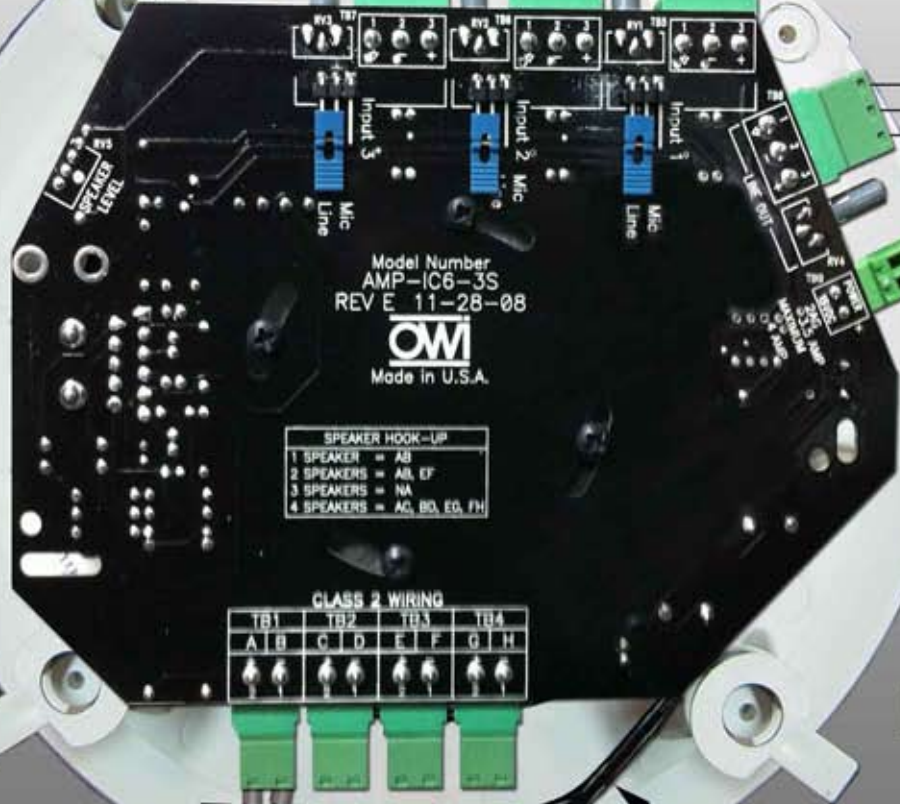


To the LINE IN 1, 2 or 3 of the
second amplified speaker (Optional)

15V DC (UL Listed-Level) Power Supply (Included) (Model PS15VDC35ALS)

minimum 22 gauge wire at
maximum length of 10 feet
to a wall
outlet

Three Input
Amplifier PC Board
installed at the
back of Speaker



Model Number
AMP-IC6-3S
REV E 11-28-08
OWI
Made in U.S.A.

SPEAKER HOOK-UP			
1 SPEAKER	=	AB	
2 SPEAKERS	=	AB, EF	
3 SPEAKERS	=	NA	
4 SPEAKERS	=	AC, BD, EG, FH	

CLASS 2 WIRING							
TB1	TB2	TB3	TB4				
A	B	C	D	E	F	G	H

ONE (1) SPEAKER DETAILED WIRING DIAGRAM

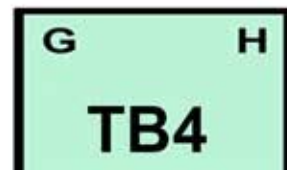
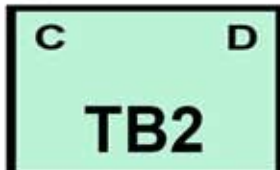
Note: Speaker wires A & B are factory installed with A connected to the positive and B connected to the negative of the Speaker.

minimum 16 gauge wire



Speaker
(Amplified Speaker)

Note: A & B are factory installed.



Touchboards

205 Westwood Ave, Long Branch, NJ 07740
Phone: 866-94 BOARDS (26273) / (732)-222-1511
Fax: (732)-222-7088 | E-mail: sales@touchboards.com

SINGLE SPEAKER HOOK UP SINGLE LINE DIAGRAM