

VZ-8.UHD Visualizer



4K
60 FPS

Next generation 4K UHD Visualizer imaging

WolfVision Visualizer systems are renowned worldwide for their unrivalled imaging quality, ease of use, and robust construction, which is due to the perfect combination of high quality components and remarkable expertise.

The VZ-8.UHD is a native 4K UHD Visualizer system. It combines crystal clear on-screen images, a touchscreen control and preview monitor, plus 4K recording and streaming functionality, together with newly designed optical and electronic systems. With the VZ-8.UHD, we set the standard worldwide for innovative, user-friendly, networked AV ready, high performance Visualizer systems.

Driving Knowledge Creation.

4K
60 FPS





Our Vision


When you've got something to say, we believe it is important that getting your message across and making an impact should be as easy as possible.


Our aim is to help you to explain it better, to give you the freedom to share your knowledge and collaborate with others - however you want, and whenever you want, when your audience is in the same room or on the other side of the world.


**Because knowledge matters -
to all of us.**

Key Features


4K **No.1 for imaging performance**
Ultra-high definition camera with 4K UHD output for presentation of content materials in unrivalled image quality.

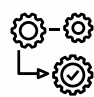
 **Powerful zoom range**
64x zoom for incredible flexibility when displaying content on-screen. Images are always crystal clear, even when zooming in closely on materials.


 **4K recording & streaming**
Simultaneous 2160p / 30fps recording and streaming. Use this networked AV-ready Visualizer for capture and distribution of content materials in outstanding quality.

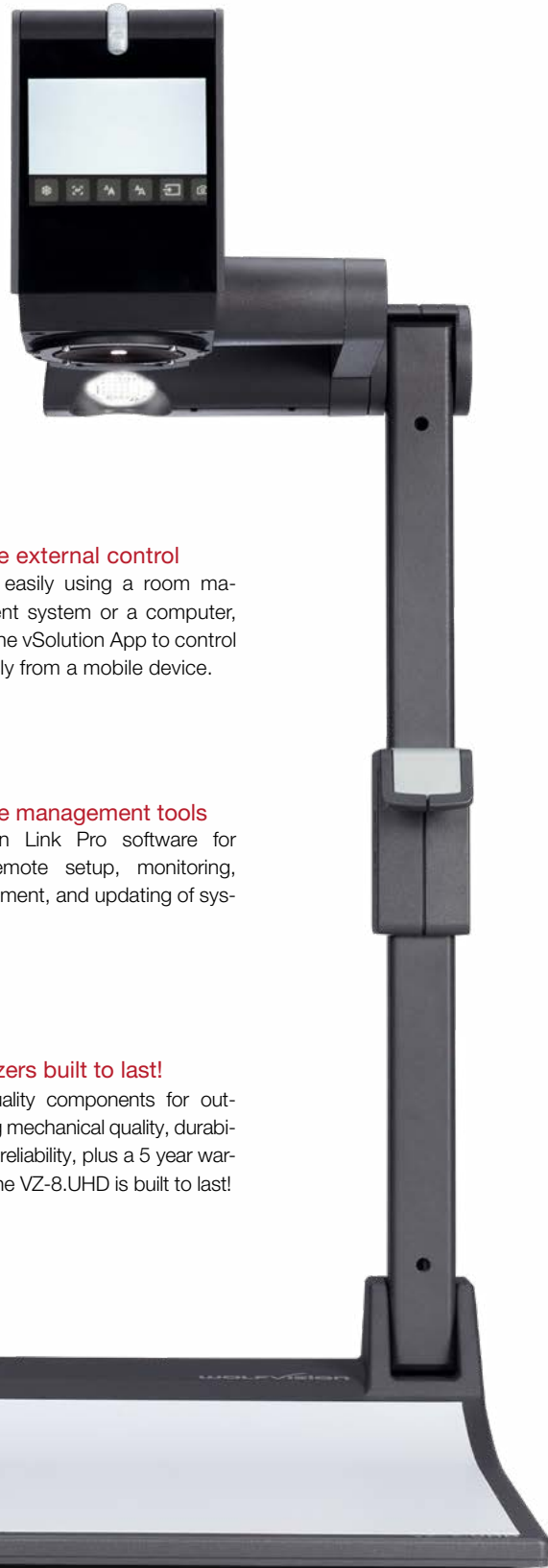
 **Focus on the content**
High speed continuous autofocus, manual focus, plus an easy-to-use 9-point touch and focus mode, ensure crisp presentation of all content materials.

 **Adjustment-free lighting**
No distracting hot spots or reflections - and no need to adjust the light. This LED Lighting system is optimised for perfect illumination.

 **Flexible external control**
Control easily using a room management system or a computer, or use the vSolution App to control wirelessly from a mobile device.

 **Remote management tools**
vSolution Link Pro software for easy remote setup, monitoring, management, and updating of systems.

 **Visualizers built to last!**
High quality components for outstanding mechanical quality, durability, and reliability, plus a 5 year warranty. The VZ-8.UHD is built to last!



Maximum ease of use



Touchscreen preview monitor

LCD touchscreen monitor for easy positioning of objects on the working surface, plus swipe-through advanced settings menu.

Automatic operation

Simply use the zoom wheel, and leave other settings like focusing, brightness, and white balance to be adjusted automatically.



Imaging around the room

90° rotating camera head with shake-free mount for picking up images and video from outside of the working surface.



Write on your Visualizer!

Self-adhesive dry-erase working surfaces available for convenient pickup and display of handwritten content materials.



Technical specifications

Camera	CMOS 1/1.8", 60 frames per second in all resolutions
Effective pixels of camera sensor	3840x2160 (8,294,400)
Native signal output	2160p UHD (3840x2160), YUV420
Converted widescreen signal output	1080p HD (1920x1080), 720p (1280x720)
Output resolution	1,600 lines
Brightness control & white balance adjustment	Automatic and manual
Focusing modes	High speed continuous autofocus, 9-point touch & focus, manual focus
Built-in touchscreen LCD control & preview monitor	Yes, 3.5" 320x240 px, RGB
On-screen menu	Yes, touchscreen with swipe-through menu & password-protected advanced functions
vSolution Link Pro software for remote management & firmware updates	Yes, included (for Windows 10 Desktop, Windows Server 2012 R2 & 2016)
Free firmware updates	Yes, via USB, LAN, and vSolution Link Pro
Zoom / Lens type	64x zoom (16x optical, 4x digital), zoom wheel with multiple speed / Wide angle lens, f = 6.8 - 110 mm
Max. object height on working surface	130 mm (5.1") in tele position 370mm (14.6") in wide position
Max. size of pick-up area	16:9, A3, (510 x 285mm / 20.1" x 11.2")
Min. pick-up area on working surface (full resolution, optical zoom)	16:9 (29.5 x 16.6mm / 1.2" x 0.7")
Min. pick-up area on working surface (with digital zoom)	16:9 (7.4 x 4.2mm / 0.3" x 0.2")
Max. pick-up area outside of working surface	Unlimited
Depth of focus on small object (42 x 33mm)	3mm (0.1")
Depth of focus on large object (360 x 270mm)	120mm (4.7")
Rotation of camera head	90° towards audience
Light source	Maintenance-free, high-brightness LED light system (high light output, low power consumption), lamp lifetime: 30,000 hours
UVC (Windows, Linux & macOS), PTP (Picture Transfer Protocol)	Yes
Live to freeze comparison (Side by Side)	Yes (2 x 1080pHD on a 4K screen)
Intelligent folding system	Yes, articulated arm, with 2-step setup
User programmable presets	3
LAN web interface	Yes
LAN streaming modes (Unicast, Multicast)	Up to 2160p 30fps, RTP H.265 +audio, RTP H.264 + audio, RTP MJPG + audio
Video recording	Yes, 2160p, up to 30 fps
Image memory	8GB internal memory + additional storage on USB stick or external hard drive
Reflection-free pick-up area	Yes, entire pick-up area
External computer input/input switch	Yes, HDMI x2, (with HDCP 2.3) up to 4K UHD 60fps pass through, and built-in digital scaling of input signal.
Alternative image display	Yes, negative image / black & white image
Seamless cross-fading between image sources	Yes, fading over black
Connectors	2x HDMI In (with HDCP 2.3), 1x HDMI out, (with HDCP 2.3) 1x LAN port, 1x USB 3.0 device port, 2x USB 2.0 host ports
Audio	Yes, via HDMI In and HDMI Out
Advanced controlling with professional protocol	Yes, via LAN and USB
Dimensions in operation (L x W x H)	392mm x 312mm x 613mm (15.4" x 12.3" x 24.1")
Dimensions when folded (L x W x H)	392mm x 312mm x 140mm (15.4" x 12.3" x 5.51")
Weight	4.95Kg (10.9lbs)
Anti-theft devices	T-Lock (Kensington® Lock), and table lock bolt
Power	External desktop power pack: multi range 100-240V, 60W, length of power cord: 1.8m
Infrared remote control	Optional (supplied free of charge on request)
Other optional accessories	Dry-erase working surface, carrying case
Warranty / Made in	5 years / EU Austria

Design and specifications subject to change! | Printed in Germany, March 2020

Your WolfVision Partner:



More information:



Head Office:

WolfVision GmbH
6833 Klaus / Austria
Tel. +43 5523 52250
wolfvision@wolfvision.com

Japan Sales Office
WolfVision Co. Ltd.
Tel. +81 3 6233 9465
wolfvision.japan@wolfvision.com

USA Sales Office
WolfVision, Inc.
Tel. +1 770 931 6802
sales@wolfvision.us

Nordic Sales Office
WolfVision Nordic (Norway)
Tel. +47 9186 9736
wolfvision.nordic@wolfvision.net

Middle East Sales Office
WolfVision Middle East (Dubai)
Tel. +971 5617 40008
wolfvision.mideast@wolfvision.com

UK Sales Office
WolfVision UK Ltd.
Tel. +44 1628 509 067
wolfvision.uk@wolfvision.com

Canada Sales Office
WolfVision Canada, Inc.
Tel. +1 613 741 9898
wolfvision.canada@wolfvision.com

Asia Sales Office
WolfVision Pte. Ltd. (Singapore)
Tel. +65 6636 1268
wolfvision.asia@wolfvision.net

Germany Sales Office
WolfVision GmbH
Tel. 0800 9828 787
wolfvision.deutschland@wolfvision.com