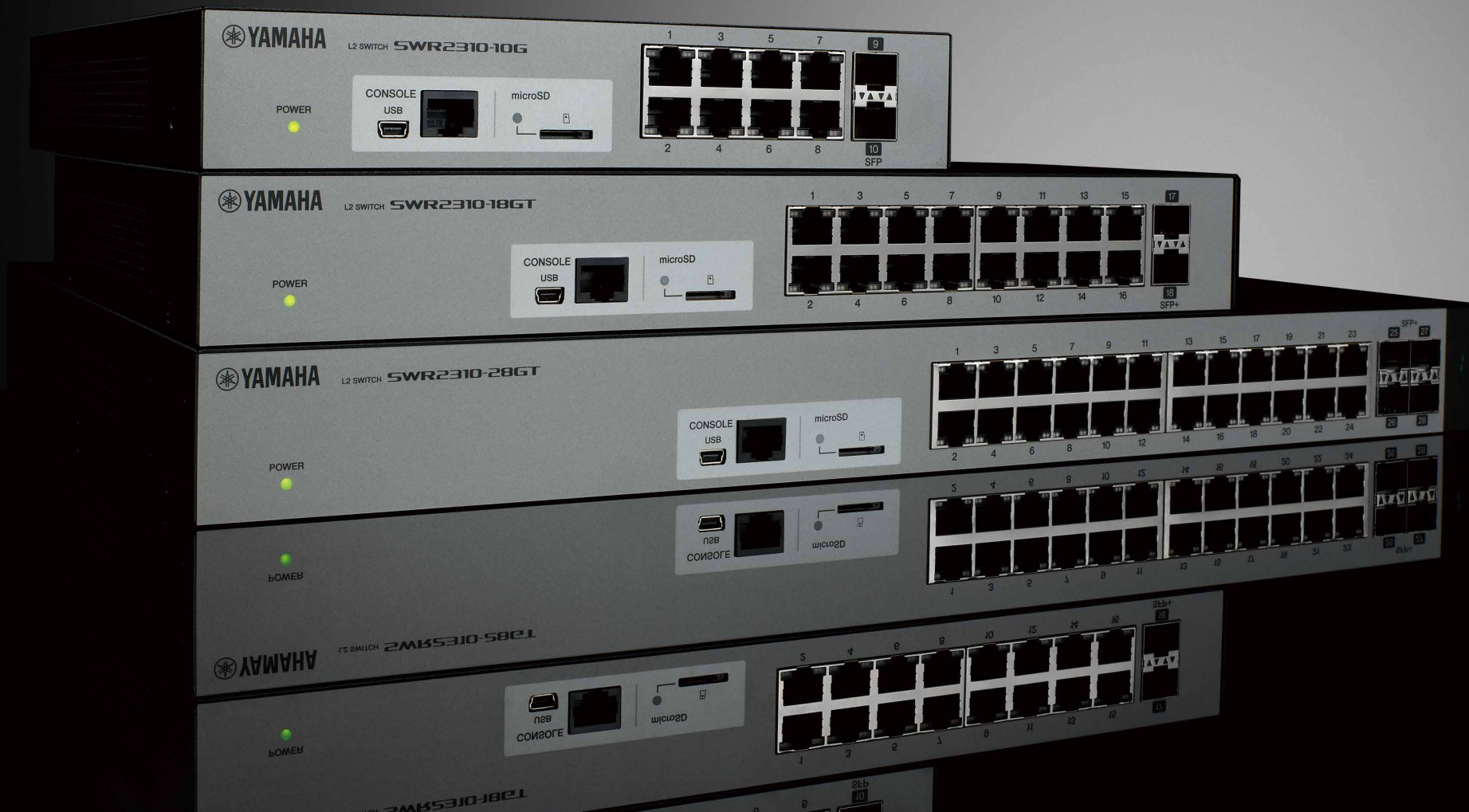




L2 SWITCH

SWR SERIES

SWR2310-10G / SWR2310-18GT / SWR2310-28GT
SWR2311P-10G / SWR2100P-10G / SWR2100P-5G



SWR Series Lineup

The Yamaha SWR switch lineup, featuring high-performance RJ45 L2 switches for fixed installations, offers systems integrators great choice of flexibility and quality for Dante audio system design.

SWR2310-10G



8 LAN PORTS 2 SFP PORTS Built-in RADIUS

SWR2311P-10G



10* LAN PORTS 2* SFP PORTS 8* PoE PORTS Built-in RADIUS

* Mutually exclusive with LAN/SFP ports
** PoE availability: Max 30W per port, 240W in total.

SWR2310-18GT



16 LAN PORTS 2 SFP+ PORTS Built-in RADIUS 10G uplink

SWR2100P-5G



5 LAN PORTS 4* PoE PORTS

* PoE availability: Max 30W per port, 70W in total.

SWR2310-28GT



24 LAN PORTS 4 SFP+ PORTS Built-in RADIUS 10G uplink

SWR2100P-10G

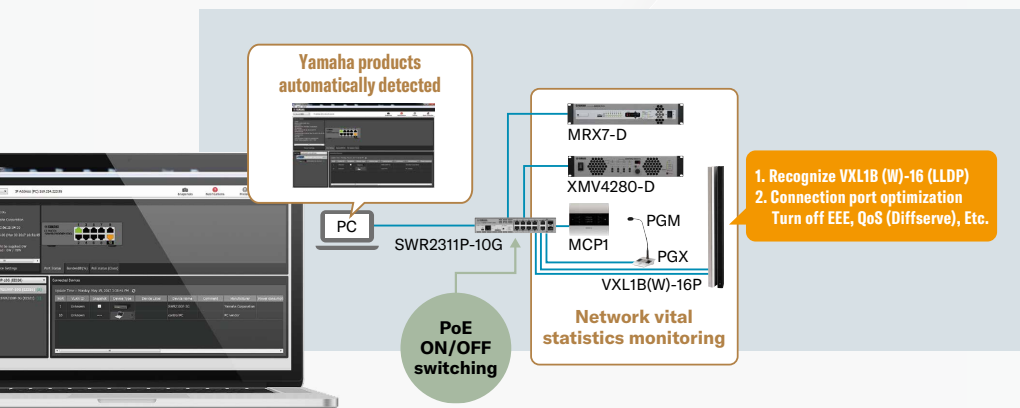


10 LAN PORTS 9* PoE PORTS

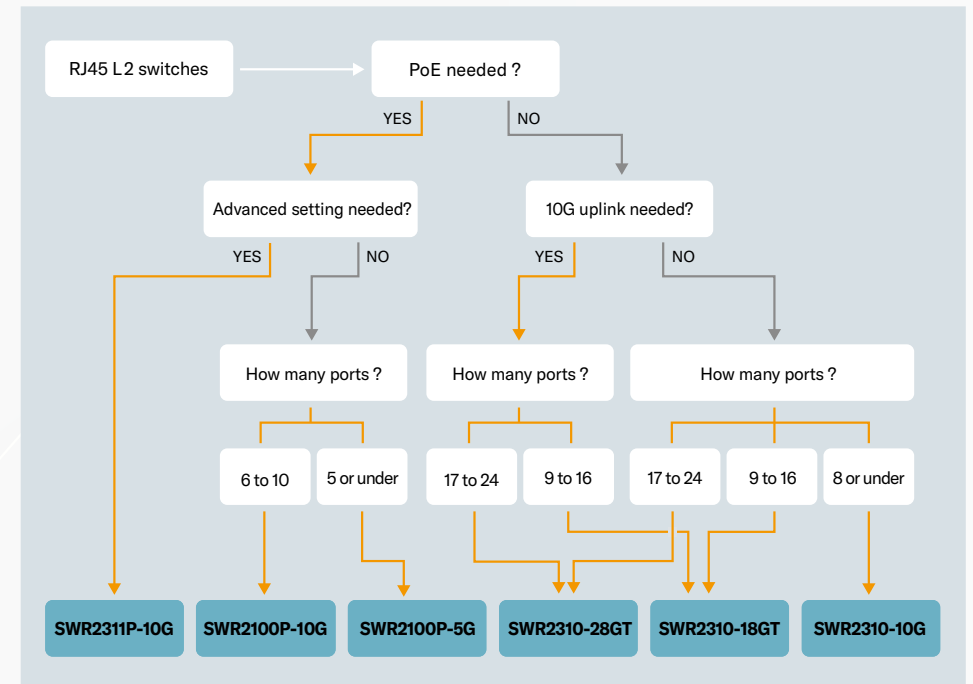
* PoE availability: Max 30W per port, 70W in total.

Yamaha LAN Monitor

Effective Dante network management hinges on a range of parameters such as network traffic, switch status, and individual Dante device information. The dedicated Yamaha LAN Monitor software application provides a comprehensive single-screen view of all necessary parameters when used with the SWR series switches, which allows users status monitoring and fast troubleshooting.

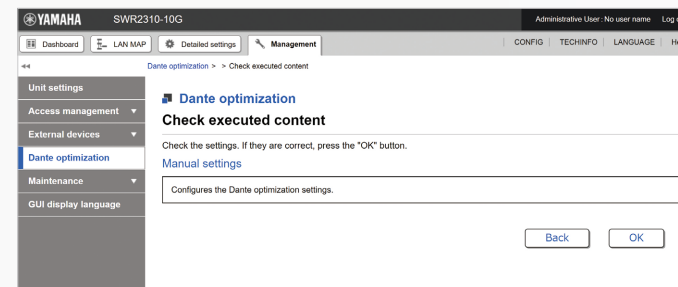


Which Model to be Chosen?



One-click Dante Optimization

IGMP and QoS settings for SWR2310 series and SWR2311P-10G switches can be automatically optimized for Dante network operation by simply clicking the “Dante optimization” button in the web-based GUI. These network settings are not critical in simple systems, but proper configuration is essential to ensure maximum stability in larger Dante networks.

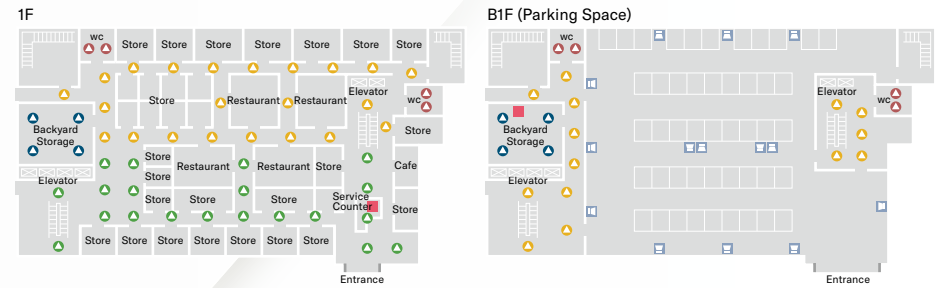
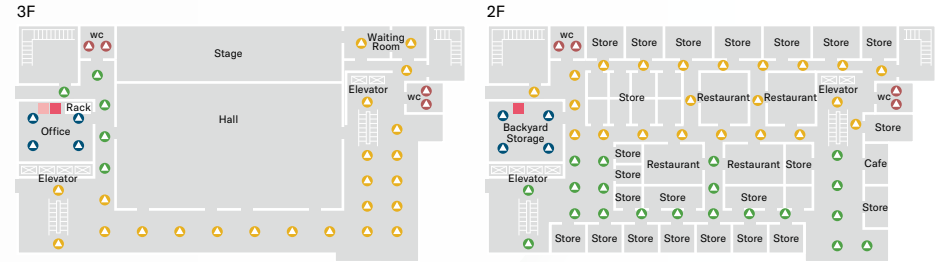
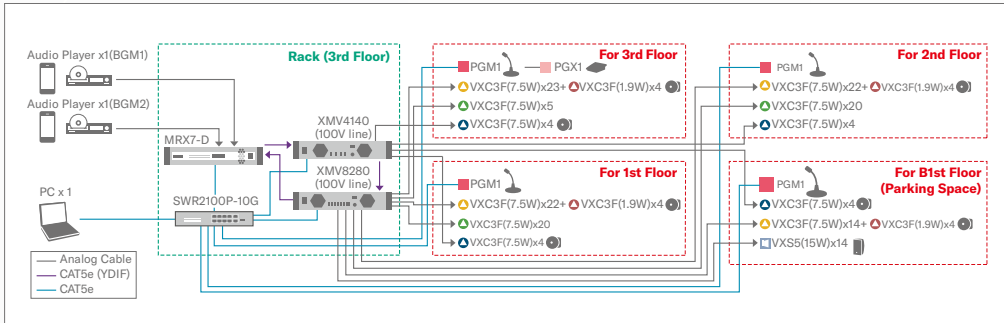


System Examples

Shopping Mall



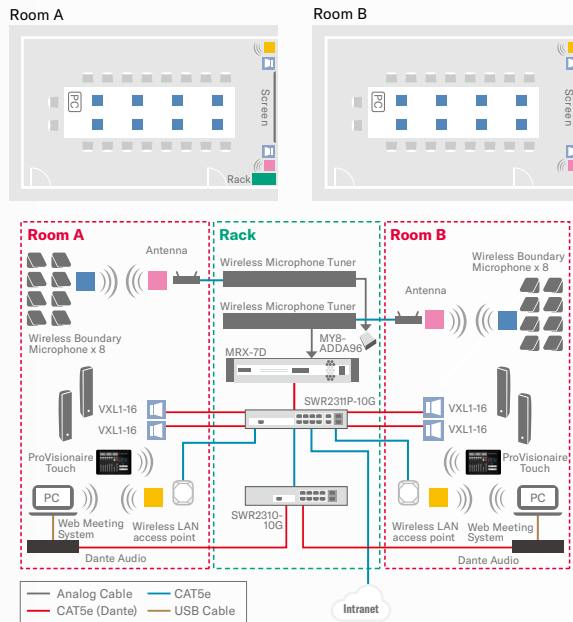
PoE-compliant Dante device such as the PGM1 paging station microphone can be supplied power as well as audio and control signals via simple L2 switches to support PoE functionality through just one Ethernet cable. Systems built around SWR2100P Series L2 switches allow comprehensive network monitoring from the dedicated Yamaha LAN Monitor software application, which offers PoE power status monitoring and ON/OFF switching capability.



Conference Room



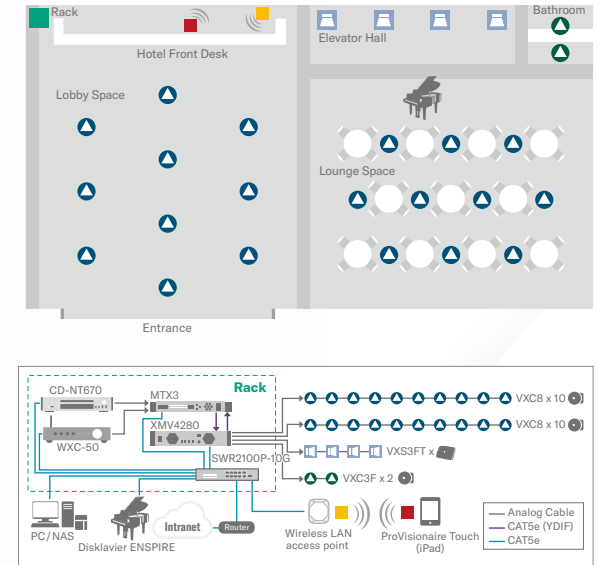
This sample system for a conference room includes a remote conferencing system, built around a digital signal processor, which allows conferences to be shared with remote locations. In addition, the ProVisionaire Touch customizable controller allows smooth and intuitive sound system operation.



Hotel Lobby



Hotel lobbies usually have a number of adjoining areas. In this particular case, background music is delivered to four separate zones: the main lobby space, lounge space, elevator hall, and toilets. Independent volume control is provided for each zone. It is also possible to supply each zone with different music to accompany seasonal events held in specific zones, for example.



General Specifications

Models		SW2310-28GT	SW2310-18GT	SW2310-10G	SW2311P-10G	SW2100P-10G	SWP2100P-5G	
LAN ports	Standard	IEEE802.3 (10BASE-T/100BASE-TX/1000BASE-T)						
	Number of ports	24	16	8	10*	10	5	
	Connector type	RJ-45						
SFP+ ports	Standard	IEEE802.3z (1000BASE-SX/ 1000BASE-LX), IEEE802.3ae (10GBASE-SR/ 10GBASE-LR)		-	-	-	-	
	Number of ports	4	2	-	-	-	-	
SFP ports	Standard	-		IEEE802.3z (1000BASE-SX/ 1000BASE-LX)		-	-	
	Number of ports	-		2	2*	-	-	
CONSOLE port	Standard	RS-232C, USB 2.0					-	-
	Connector type	RJ-45, USB mini-B (5-pin)					-	-
	Data transmission speed	9600 bit/s					-	-
microSD slot	Standard	microSD/microSDHC (microSDXC is not supported)					-	-
PoE ports	Standard	-	-	-	IEEE 802.3at			
	Number of ports	-	-	-	8	9	4	
	Power supply system	-			Alternative A			
	Max Power supply	Per port	-	-	-	30 W	30 W	30 W
All ports		-	-	-	240 W	70 W	70 W	
MAC address		Indicated in product label on top panel of unit						
Operating environment conditions		Ambient temperature: 0-50°C, Ambient humidity 15-80% (non-condensing)						
Storage environment conditions		Ambient temperature: -20-60°C, Ambient humidity 10-90% (non-condensing)			Ambient temperature: -20-50°C, Ambient humidity 10-90% (non-condensing)			
Power supply voltage and frequency		AC100 - 240V, 50/60 Hz						
Maximum power consumption		25.2 W	19.0 W	11.7 W	280 W	90 W	86 W	
Dimensions	Width	440 mm	330 mm	220 mm	220 mm	220 mm	220 mm	
	Height	44 mm	43.5 mm	40.5 mm	42.4 mm	40.5 mm	40.5 mm	
	Depth	300 mm	200 mm	250 mm	294 mm	250 mm	250 mm	
Weight		3.9 kg	2.1 kg	1.7 kg	2.3 kg	1.8 kg	1.6 kg	

*Mutually exclusive with LAN/SFP ports

Optional Accessories

Accessories	RK-SWR (Rack-mount)	WK-SWR (Wall-mount)	SFP-SWRG-SX (SFP module)	SFP-SWRG-LX (SFP module)	SFP-SWRT-SR (SFP+ module)	SFP-SWRT-LR (SFP+ module)	DAC-SWRT-1M (Direct Attached Cable)	DAC-SWRT-3M (Direct Attached Cable)
Switches								
SWR2310-28GT	*		✓	✓	✓	✓	✓	✓
SWR2310-18GT	*	✓	✓	✓	✓	✓	✓	✓
SWR2310-10G	✓	✓	✓	✓				
SWR2311P-10G	✓	✓	✓	✓				
SWR2100P-10G	✓							
SWR2100P-5G	✓							

* Rack-mount brackets are included in SWR2310-18GT / SWR2310-28GT



YAMAHA CORPORATION
P.O. BOX 1, Hamamatsu Japan

www.yamaha.com/proaudio

*All specifications are subject to change without notice.

*All trademarks and registered trademarks are property of their respective owners.

Feb. 2020