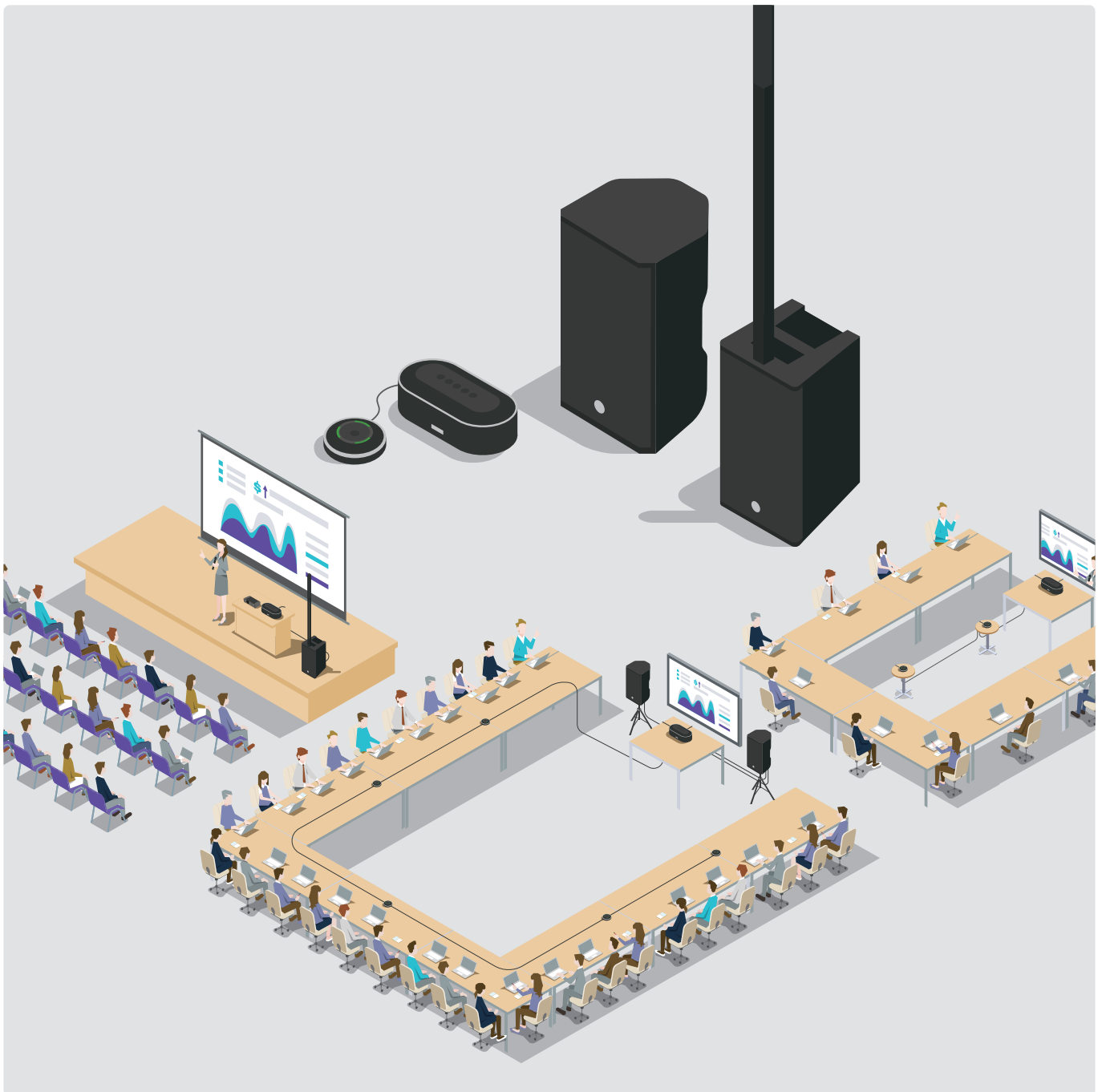


# YVC-1000 WITH PA SYSTEM SETUP GUIDE

---



# INTRODUCTION

---

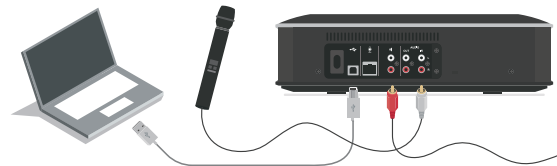
We have been shifted from conventional on-site conferences to new styles where we have on-site lessons, seminars, and meetings while delivering them online to remote locations as well (Hybrid meetings). For successful meetings, both on-site and online sound must have enough volume and clarity. Are you satisfied with the sound of your current system? Or are you looking for a system that can be easily set up and covers both online and on-site meetings?

Just by adding the “YVC-1000” microphone & speaker system and/or a few more devices such as external speakers, a mixing console, and microphones to your current system, you will be able to hold seminars in a large space while streaming online without any other specialized equipment. This document introduces solutions and how to set up such systems to satisfy the demands of a Hybrid environment.

## STEP 1 | Preparing/Installing Devices



## STEP 2 | Connecting Devices



## STEP 3 | Setting up Devices and Making Adjustments



- No part of this document may be copied or reproduced in any form or by any means without permission.
- This document is based on the latest specifications at the time of publication. The latest version can be downloaded from the Yamaha website. <https://www.yamaha.com/proaudio/>
- Yamaha is not liable for any loss or damage to data resulting from use of the products. Please note that the warranty covers repair of the products only.

**Product names** | In this document, product names are described as follows.  
Microsoft® Windows® : Windows  
macOS® : macOS

**Trademarks** | Microsoft and Windows are registered trademarks of Microsoft Corporation in the United States and other countries.  
Mac and macOS are trademarks of Apple Inc., registered in the U.S. and other countries.

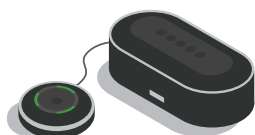
# TABLE OF CONTENTS

During an online meeting or seminar, a voice of remote participants is not loud enough to hear ...

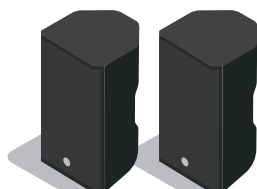


## YVC-1000 + ADDITIONAL SPEAKERS

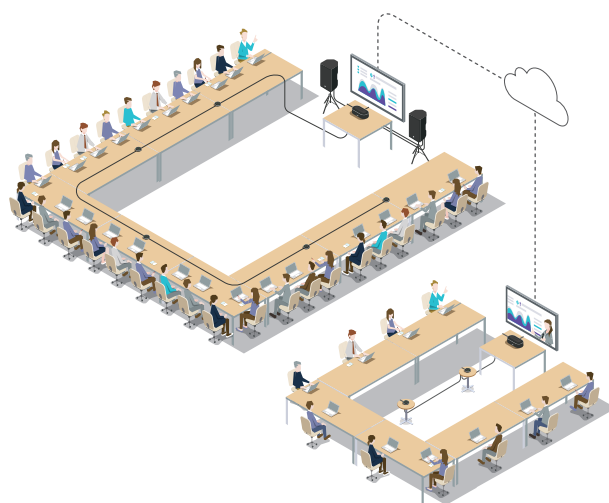
[P.04](#)



YVC-1000



DBR Series

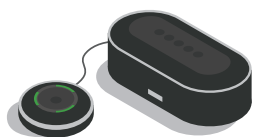


During a presentation or seminar in a large space, a speaker's voice and the voices of remote participants are not loud enough to be heard ...



## YVC-1000 + STAGEPAS 1K

[P.10](#)



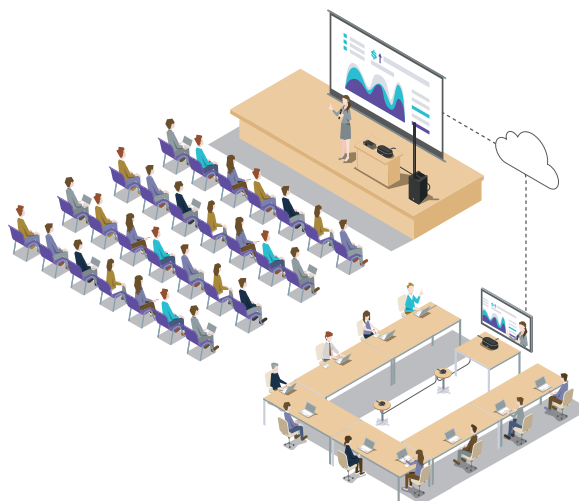
YVC-1000



STAGEPAS 1K



Microphone

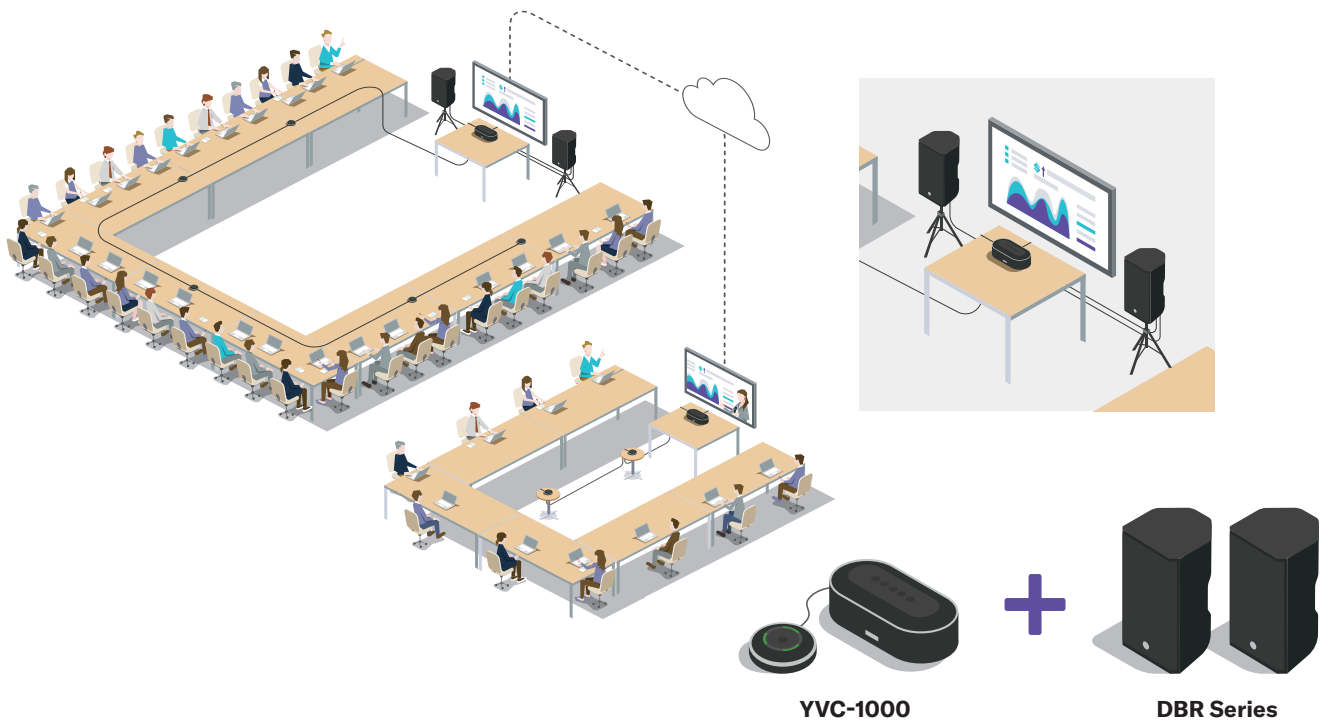


During an online meeting or seminar, a voice from remote locations is not loud enough to hear ...



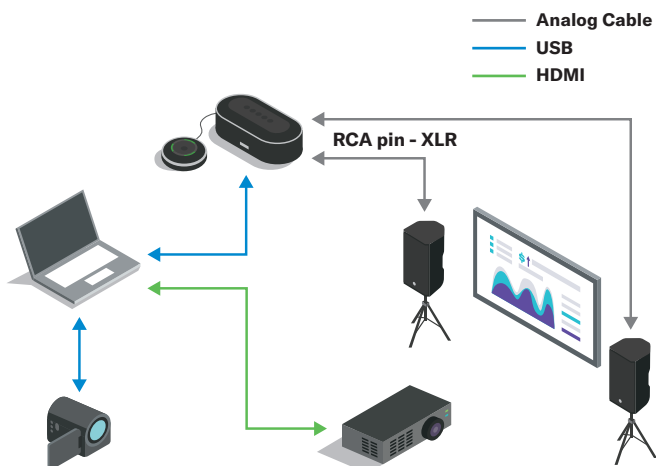
## YVC-1000 + ADDITIONAL SPEAKERS

DBR series or HS series powered speakers with the YVC-1000 can solve the problem.



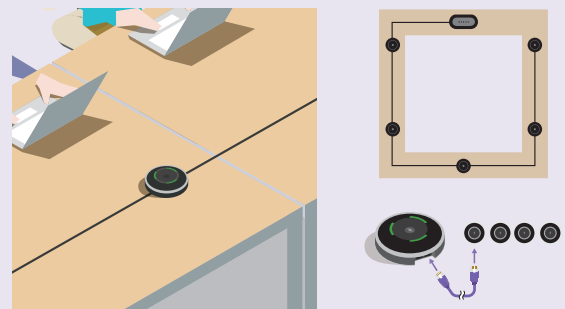
### Use case

Large-scale and expensive equipment is not necessary. By connecting powered speakers with a built-in amplifier to the external speaker terminals of the YVC-1000, audio from remote locations can be delivered to all the participants in a large room during lessons, seminars, and meetings.



### The Extended function of the tabletop microphone

Optional “YVC-MIC1000EX” extension microphones can be added if there are more participants or a room has an irregular layout that a single tabletop microphone cannot cover. Up to five tabletop microphones including a microphone that comes with the YVC-1000 can be connected to the YVC-1000.



## STEP 1. Preparing/Installing Devices

---

Prepare necessary equipment and install it properly.

### 1 YVC-1000 microphone & speaker system

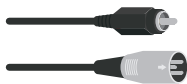
- Control Unit (YVC-CTU1000)
- Microphone (YVC-MIC1000)
- Power cable
- Microphone cable
- USB cable

### 2 External speaker(s)

Yamaha recommends powered speakers such as Yamaha “DBR” and “HS” series.

### 3 Audio cable(s)

Use a cable that corresponds to an output terminal of the speaker for connecting with the YVC-1000. The following are examples of cables that can connect to the RCA pin terminals of the YVC-1000.



RCA pin - XLR male



RCA pin - Phone



RCA pin - RCA pin

### 4 PC (for YVC-1000 setup and web conference)

The YVC-1000 supports the following OS:

- Windows 10 (32bit/64bit), Windows 8.1 (32bit/64bit), Windows 8 (32bit/64bit), Windows 7 (32bit/64bit)
- macOS 10.14, macOS 10.13, macOS 10.12, Mac OS X 10.11, Mac OS X 10.10, Mac OS X 10.9, Mac OS X 10.8
- USB: USB 2.0 or later
- For the latest information, please see the Yamaha website.

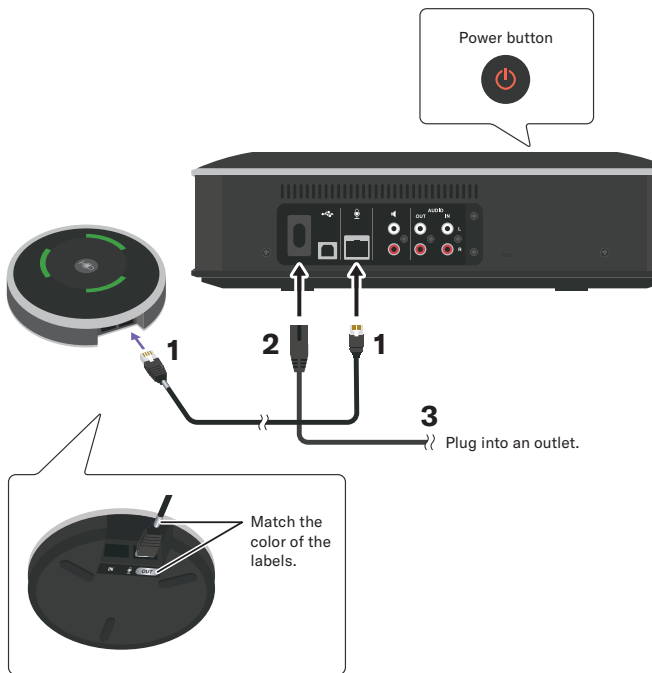
### 5 Separately available extension microphone(s) (YVC-MIC1000EX)

Use the necessary number of microphones according to the number of participants.

# YVC-1000 + ADDITIONAL SPEAKERS

## STEP 2. Connecting Devices

### Connecting the power and microphone cables to the YVC-1000



- 1 **Connect the microphone to the Control Unit using the microphone cable supplied with the product.**
- 2 **Connect the power cable to the power terminal of the Control Unit.**
- 3 **Connect the power plug to an outlet.**

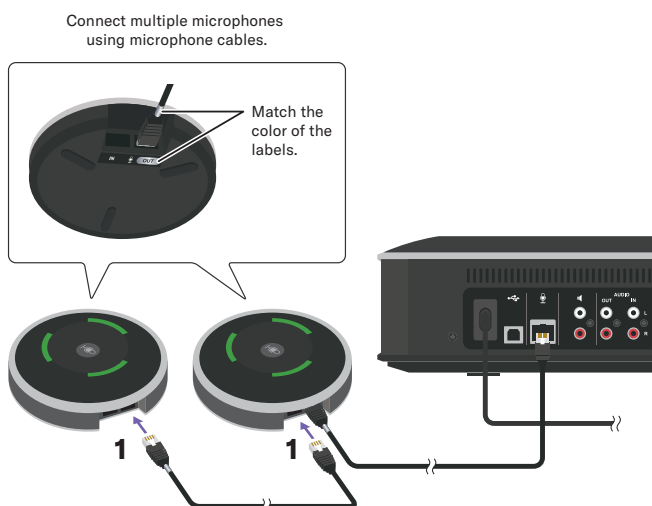
The product enters the standby mode, and the power button (🔴) lights up red.

#### NOTE

- When connecting the microphone cable, be sure to match the color of the labels on the microphone cable and of the microphone output terminal (OUT).
- Be sure to fully plug the power cable into the power terminal of the Control Unit and the outlet.

### Connecting extension microphone(s) (optional)

Connect the necessary number of the extension microphones (YVC-MIC1000EX) according to the room size and number of participants. A total of five tabletop microphones (up to four extension microphones + the microphone supplied with the YVC-1000) can be connected.



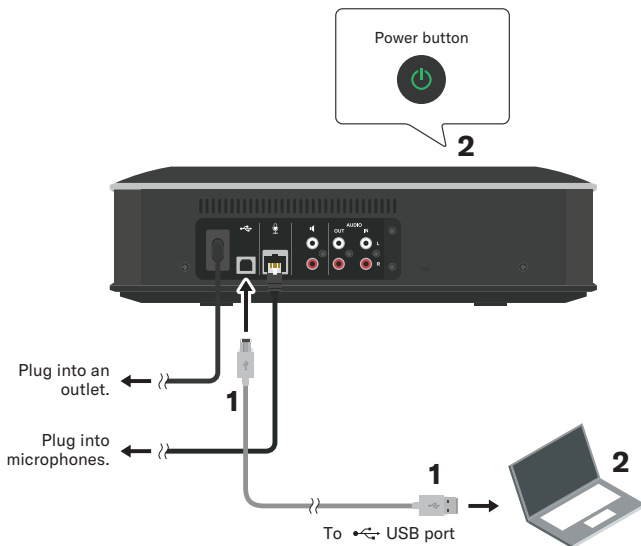
- 1 **Connect the second microphone to the first microphone.**
- 2 **If necessary, connect the third microphone and the subsequent ones with each other.**

#### NOTE

- When connecting microphones, be sure to match the color of the labels on the microphone cable and of the microphone output terminal (OUT).

## STEP 2. Connecting Devices

### Connecting the YVC-1000 to the PC

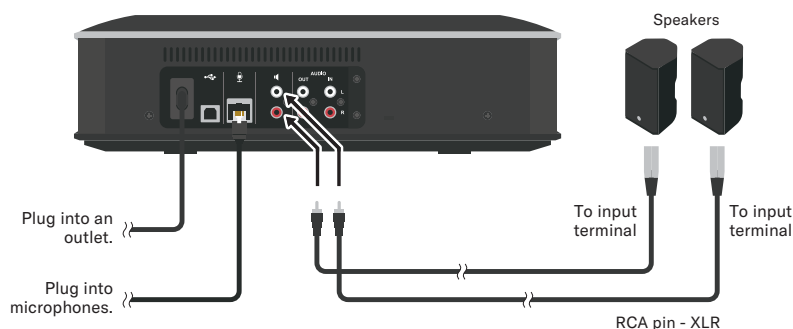


- 1 **Make sure that the Control Unit is in standby mode (🔴), then connect it to a PC for a web meeting using the supplied USB cable.**
- 2 **Turn the power to the PC and the Control Unit. You do not need to install the USB driver separately because the YVC-1000 is recognized as a basic USB audio device by the PC.**

### Connecting the Control Unit to external speakers

Connect your cable into the terminal on the back of the Control Unit marked with the (🔊) – then run the other end of the cable into the input terminal of your external speaker system or mixer.

Do not connect the speakers to the Control Unit's audio output terminal as this will cause feedback – the OUT is only designed for recording purposes where required.

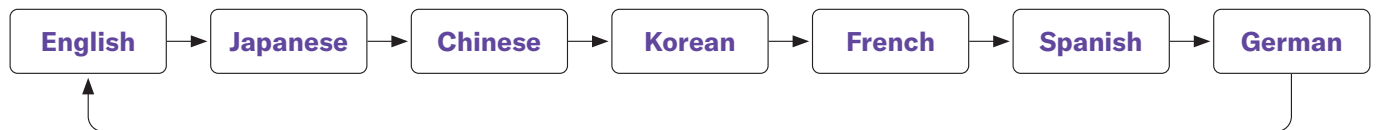





## STEP 3. Setting up Devices and Making Adjustments

---

### Changing voice guidance settings

The YVC-1000 notifies results of operations such as Bluetooth connection, problems in acoustic conditions, and the automatic audio tuning procedure using voice guidance. The voice guidance language can be changed, so please set it to your preferred language before setting up external speakers. The language is set to English in the factory settings.



Turn on the Control Unit, then press the volume + button (  ) repeatedly while holding down the tuning fork button (  ). Each time the volume + button (  ) is pressed, the language is switched as shown below.

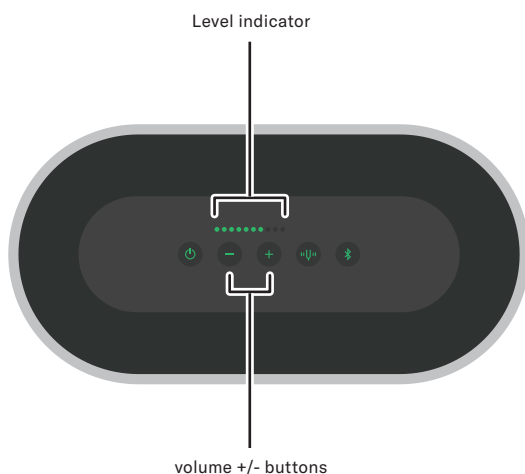
The voice guidance notifies the user about the name of the selected language.



## STEP 3. Setting up Devices and Making Adjustments

### Adjusting the volume of the external speakers

Follow steps 1 to 5 to adjust and fix the volume of the external speakers. During a meeting, use only the volume +/- buttons of the Control Unit to adjust the external speakers' volume.



- 1** Always start with your external speaker volume set to minimum, before adjusting the volume on the YVC-1000.
- 2** Set the playback device of the PC to the YVC-1000.
- 3** Press the volume +/- buttons of the Control Unit to adjust the volume until seven lamps of the volume level indicator light up. The volume can also be adjusted from the PC.
- 4** Play some audio on the PC – Then start to raise the volume on the external speakers until you reach an adequate volume in the room.
- 5** Use the volume +/- buttons of the Control Unit to adjust the volume as necessary.

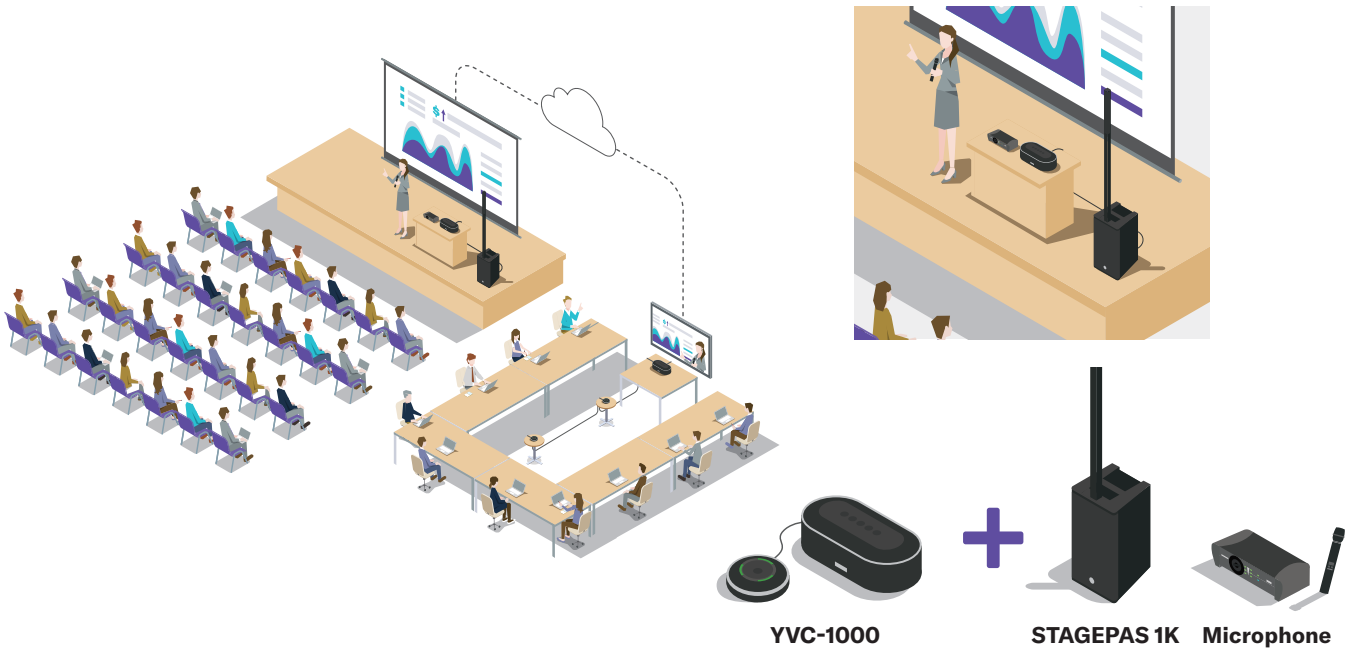
### To mute the speaker(s)

You can use the PC connected to the YVC-1000 to mute the speakers. When muted, the volume +/- buttons of the Control Unit flash green, and you will hear no audio through the speakers. You can unmute the speakers from the PC, the volume +/- buttons light up solid green, and you can then hear audio through the speakers. You can also unmute the speakers by pressing the volume +/- button at the same time.

During a presentation or seminar in a large space, a speaker's voice and the voices from remote participants are not loud enough to be heard ...

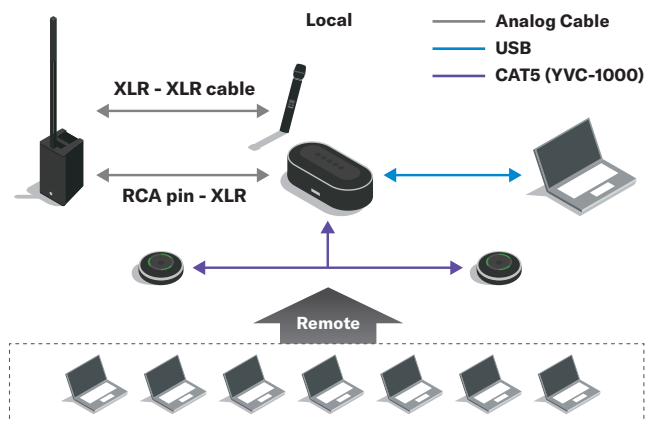
# YVC-1000 + STAGEPAS 1K

A system combining the STAGEPAS 1K portable PA system and YVC-1000 can enhance the flexibility and operability, allowing individual adjustment of the speech volume in a room and the volume being sent to remote participants.



## Possible Application

By using a microphone connected to the STAGEPAS 1K, speakers' voices can be amplified to a sufficient volume in a large-scale on-site seminar or presentation while distributing the voice to remote locations. A system can be built without any special installation or construction. However, please note that the microphone supplied with the YVC-1000 cannot be amplified in the room.



### The Mixing Function of the STAGEPAS 1K

The mixing function of the STAGEPAS 1K allows adjusting speech volumes in a room and the volume for distribution to remote locations individually. So, you do not have to worry about the distribution volume when adjusting the volume in a room.



## STEP 1. Preparing/Installing Devices

Prepare necessary equipment and install it properly.

### 1 YVC-1000 microphone & speaker system

- Control Unit (YVC-CTU1000)
- Microphone (YVC-MIC1000)
- Power cable
- Microphone cable (LAN cable)
- USB cable

### 2 STAGEPAS 1K portable PA system

### 3 External microphone(s)

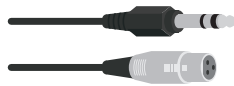
A condenser microphone cannot be connected directly to the STAGEPAS 1K.

### 4 Audio cable(s) for connecting (an) external microphone(s)

Use a cable with a terminal that corresponds to the microphone's specifications. The following are examples of cables that can connect to the STAGEPAS 1K.



XLR male - XLR female



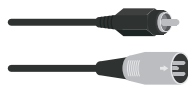
Phone - XLR female

### 5 Audio cables for connecting an external microphones

Use a cable with a terminal that corresponds to the microphone's specifications. The following are examples of cables that can connect to the STAGEPAS 1K.



RCA pin - XLR Female



RCA pin - XLR male

### 6 PC (for YVC-1000 setup and web conference)

The YVC-1000 supports the following OS:

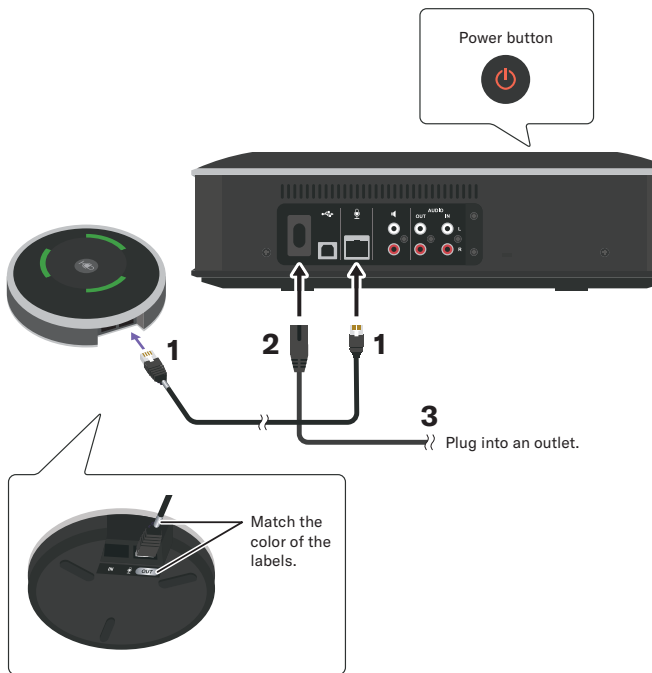
- Windows 10 (32bit/64bit), Windows 8.1 (32bit/64bit), Windows 8 (32bit/64bit), Windows 7 (32bit/64bit)
- macOS 10.14, macOS 10.13, macOS 10.12, Mac OS X 10.11, Mac OS X 10.10, Mac OS X 10.9, Mac OS X 10.8
- USB: USB 2.0 or later
- For the latest information, please see the Yamaha website.

### 7 Separately available extension microphone(s) (YVC-MIC1000EX)

Use the necessary number of microphones according to the number of participants.

## STEP 2. Connecting Devices

### Connecting the power and microphone cables to the YVC-1000



- 1 **Connect the microphone to the Control Unit using the microphone cable supplied with the product.**
- 2 **Connect the power cable to the power terminal of the Control Unit.**
- 3 **Connect the power plug to an outlet.**

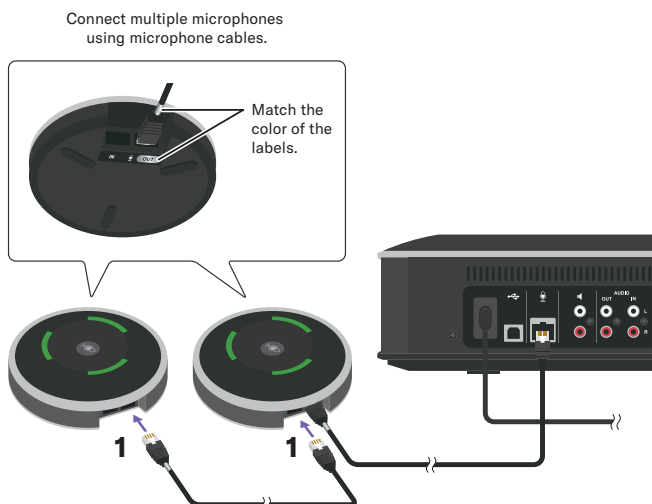
The product enters the standby mode, and the power button (🔴) lights up red.

#### NOTE

- When connecting the microphone cable, be sure to match the color of the labels on the microphone cable and of the microphone output terminal (OUT).
- Be sure to fully plug the power cable into the power terminal of the Control Unit and the outlet.

### Connecting extension microphone(s) (optional)

Connect the necessary number of the extension microphones (YVC-MIC1000EX) according to the room size and number of participants. A total of five tabletop microphones (up to four extension microphones + the microphone supplied with the YVC-1000) can be connected.



- 1 **Connect the second microphone to the first microphone with the LAN cable supplied with the extension microphone.**
- 2 **If necessary, connect the third microphone and the subsequent ones with each other.**

#### NOTE

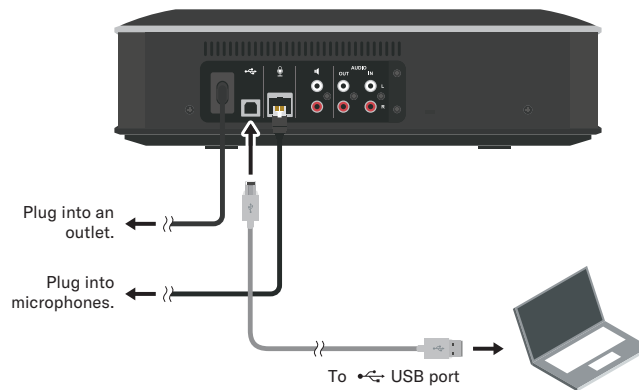
- When connecting microphones, be sure to match the color of the labels on the microphone cable and of the microphone output terminal (OUT).

## STEP 2. Connecting Devices

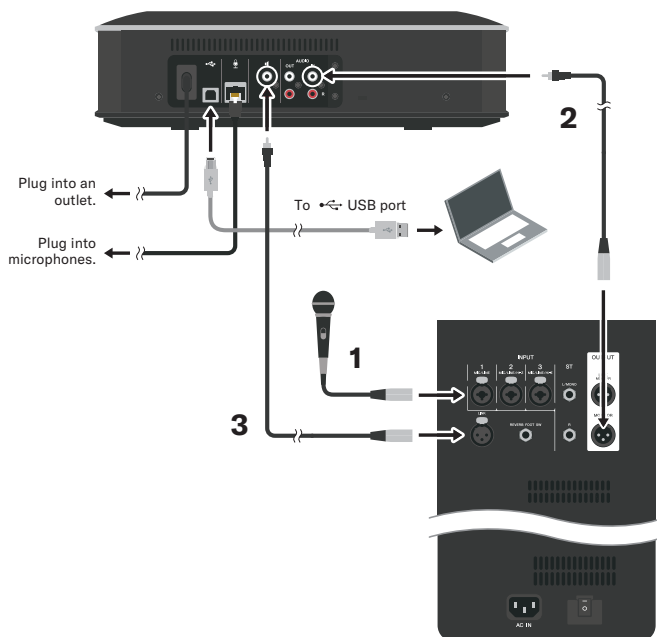
Please make sure that all the devices are turned off or in the standby state before connecting them.


### Connecting the YVC-1000 to PC

Connect a PC for a web meeting to the Control Unit using the included USB cable.



### Connecting the Control Unit to the STAGEPAS 1K



- 1 **Connect the external microphone(s) to an input jack of the STAGEPAS 1K.**
- 2 **Connect the MONITOR output jack of the STAGEPAS 1K to the audio input terminal of the Control Unit.**
- 3 **Connect the L channel of the Control Unit's external speaker terminals (with the  mark) to the LINK input jack of the STAGEPAS 1K. (Do NOT connect the STAGEPAS 1K to the audio output terminals of the Control Unit.)**

## STEP 3. Setting up Devices and Making Adjustments

### Setting up for connection between the YVC-1000 and the STAGEPAS 1K

To use the YVC-1000 with the STAGEPAS 1K, the settings of the YVC-1000 need to be changed using the “YVC-1000 Configurator” application software.

The software is available for both Windows or Mac. However, this document explains the procedure using the Windows version.

- 1 Download YVC-1000 Configurator (YVC-1000\_Configurator\_XXX.zip) from the Yamaha website and decompress the file.**

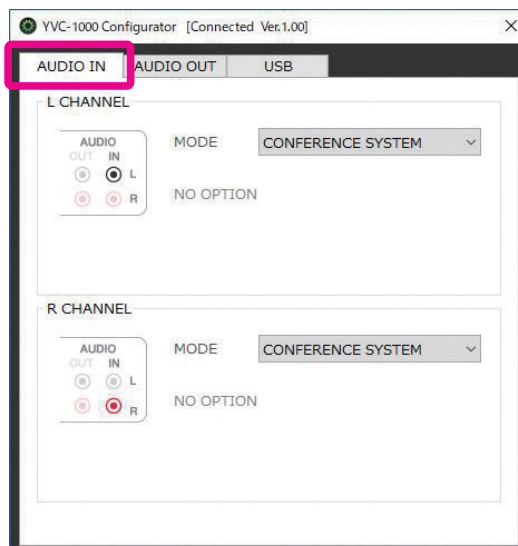
“xxx” in the file name is the version of the YVC-1000 Configurator.

- 2 Turn the power to the YVC-1000.**

- 3 Double-click the “YVC-1000 Configurator.exe” on the decompressed folder to launch YVC-1000 Configurator.**

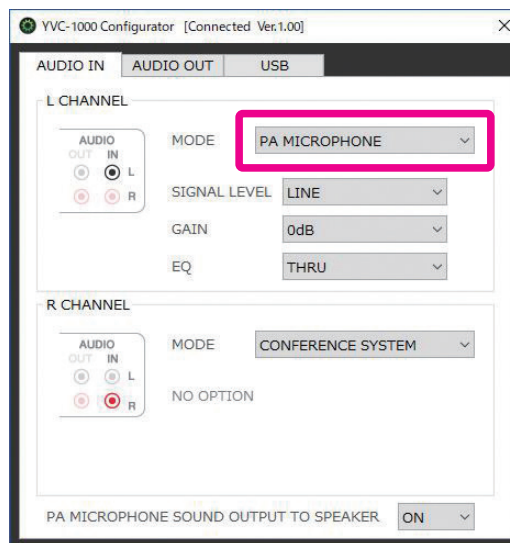
The “YVC-1000 Configurator Licensing Agreement” dialog box appears when the software is initially started. Carefully read the contents, select “Accept all terms of the license agreement”, and click “OK”.

- 4 Select the “AUDIO IN” tab of the YVC-1000 Configurator.**

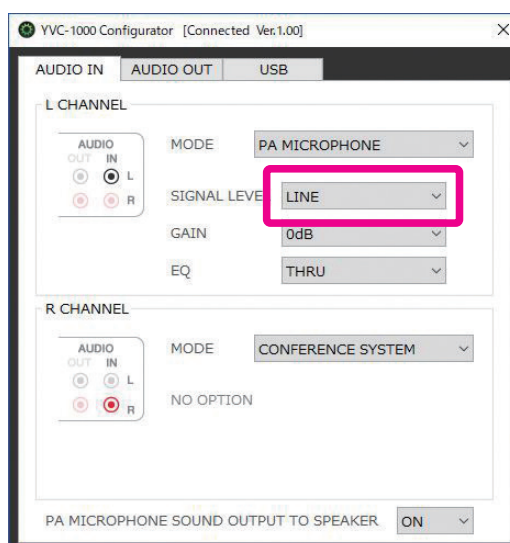


## STEP 3. Setting up Devices and Making Adjustments

- 5 Select “PA MICROPHONE” from the “MODE” drop-down list of the channel connected to the MONITOR output jack of the STAGEPAS 1K.

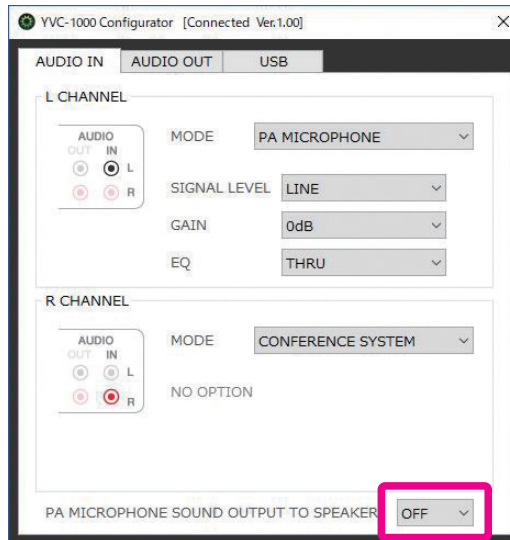


- 6 Select “LINE” from the “SIGNAL LEVEL” drop-down list.



## STEP 3. Setting up Devices and Making Adjustments

- 7 Set the “PA MICROPHONE SOUND OUTPUT TO SPEAKER” to OFF.



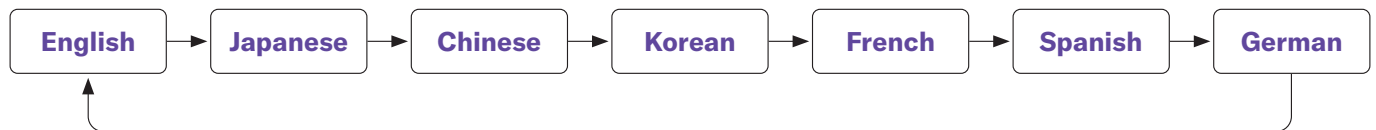





## STEP 3. Setting up Devices and Making Adjustments

---

### Changing voice guidance settings

The YVC-1000 notifies results of operations such as Bluetooth connection, problems in acoustic conditions, and the automatic audio tuning procedure using voice guidance. The voice guidance language can be changed, so please set it to your preferred language before setting up external speakers. The language is set to English in the factory settings.



Turn on the Control Unit, then press the volume + button (  ) repeatedly while holding down the tuning fork button (  ). Each time the volume + button (  ) is pressed, the language is switched as shown below.

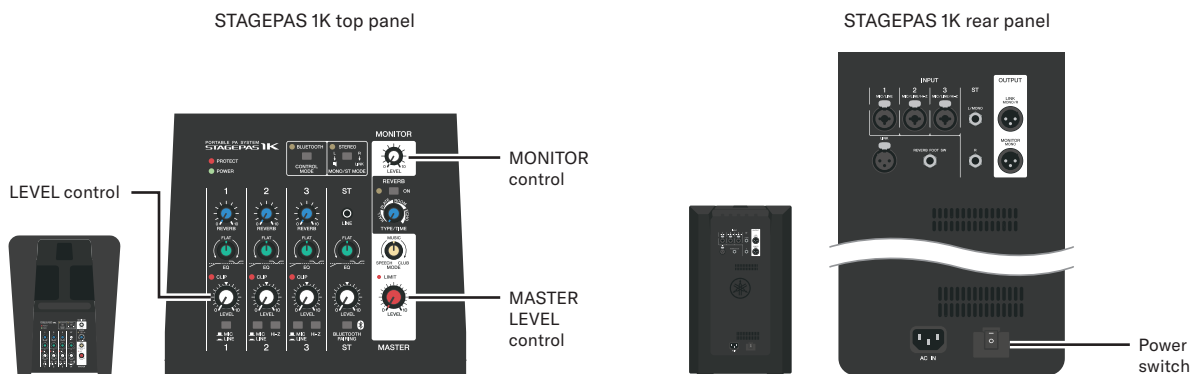
The voice guidance notifies the user about the name of the selected language.

## STEP 3. Setting up Devices and Making Adjustments

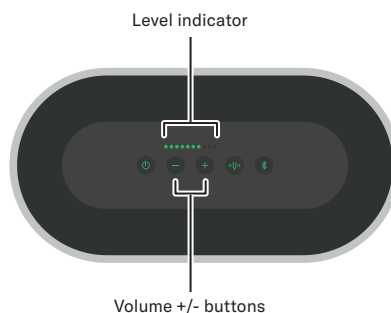
### Adjusting the volume of the remote participants

Follow the procedure below to adjust the sound volume of the remote participants.

- 1 **Make sure that the MASTER LEVEL control, the LEVEL control of the channel where the microphone is connected, and the MONITOR control of the STAGEPAS 1K are set to the lowest.**
- 2 **Set the MIC/LINE switch of the channel where the microphone is connected to the MIC position.**
- 3 **Turn the power to the STAGEPAS 1K.**

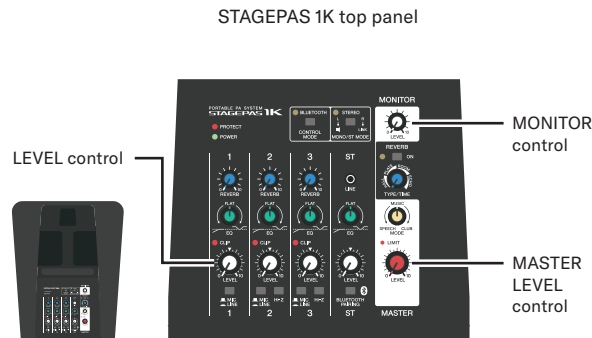


- 4 **Press the volume +/- buttons of the Control Unit to adjust the sound volume from remote locations until seven lamps of the volume level indicator light up.**
- 5 **Use the volume +/- buttons of the Control Unit to adjust the sound volume during a meeting.**



## STEP 3. Setting up Devices and Making Adjustments

Adjusting sound volume of external microphone(s) using STAGEPAS 1K



- 1 Set the MASTER LEVEL control to the center position so that adequate volume can be obtained during a meeting.**
- 2 Use the LEVEL control to adjust the input channel's volume so that the input channel outputs at a similar volume level to the sound from remote locations.**
- 3 Use the MONITOR control to adjust the sound volume of the external microphone sent to remote locations.**
- 4 Adjust each sound volume using the STAGEPAS 1K when necessary.**

### NOTICE

The microphone muting function of the YVC-1000 works for all the microphones connected to it by default. If you have microphones connected directly to the YVC-1000, muting one of the tabletop microphones mutes all the microphones - including those being fed to the Audio IN port on the YVC-1000. In this scenario the result will be that no sound will be sent to remote locations when mute is enabled from either the Control Unit or an extension microphone. If you want to mute/unmute your feed from the STAGEPAS separately, then set "MICROPHONE MUTE" on the "USB" tab to "NO SYNC".

