

CHARGING SYSTEMS





YELLOW JACKET®

Refrigeration System Analyzer


Digital color TFT display with adjustable brightness and contrast protected by anti-glare, scratch resistant lens



The **YELLOW JACKET®** refrigeration system analyzer features a full color graphics display for intuitive, easy reading. The display reads in analog, digital or a combination of both, and monitors two pressures, two live temperatures, subcooling and superheat, and saturation temperatures (liquid and vapor) for nearly 100 refrigerants.



- Nearly 100 NIST refrigerant profiles included (upgradeable via USB for new refrigerants)
- Built-in pressure/temperature chart reference screen for all refrigerants
- Built-in full scale vacuum sensor reads deep vacuum down to 10 microns
- Dual K-Type temperature-compensated sensor ports allow for simultaneous suction and liquid readings
- High accuracy and resolution pressure transducers for fast and sensitive leak detection
- Provides real-time pressure data in selectable time increments: 0.1, 0.2, 0.5, 1 and 2 seconds

- Automatic superheat and subcooling calculations
- Corresponding bubble point and dew points for current high side and low side pressures, respectively
- Displays and records max/min pressures
- Holds current reading/scrolls back to past readings
- Data logging for onscreen review or USB export to PC to generate performance/Excel™ work reports
- Tracks and exports date and time, useful for data logging
- Elevation may be entered manually for accurate, automatic pressure compensation
- Zero pressure by pressing a key in the set-up menu
- Selectable “auto power off” and “power saving mode”
- Low battery indicator
- 360° swivel hook stows when not in use
- Highly weather resistant, glass fiber reinforced, engineering grade thermoplastic housing - fully gasketed for water and dust resistance
- Two-year warranty
- Made in the USA 

Specifications

Pressure sensing resolution (low and high sides):
 0.1 psi, 0.01 bar, 1 kPa, 0.1 MPA, 0.01 kg/cm²

Pressure sensing accuracy:
 0.5% of full scale at 25°C
 1% of full scale at 55°F to 130°F
 2% of full scale -40°C to 120°C

Working pressure (maximum measurable pressure):
 Low side: 0 - 350 psia High side: 0 - 700 psia

Proof pressure (low and high sides): 1000 psi

Burst pressure (low and high sides): 1500 psi

Temperature sensor range: -100 to 600°F (-73 to 315°C)

Temperature display resolution: 0.1°F or C°

Temperature accuracy: ±1.8°F (±1°C)

Vacuum display resolution:
 Shows two most significant digits in microns (25xxx-10xxx, 99xx-10xx, 99x-10x, 99-10)
 Other units are direct conversions from the micron value

Vacuum accuracy: 20% of reading

Operating temperature: -4 to 122°F (-20 to 50°C)

Storage temperature: -20 to 170°F (-29 to 77°C)

Dimensions: 8.3" wide x 6.7" tall x 3.6" deep (21 cm x 17 cm x 9 cm) excluding manifold

Weight: 3.2 lb (1.45 kg) excluding manifold

Power: AA batteries (8); alkaline, NiCd, NiMH, A-A Lithium, Li Ion, Li Pol (approximately 14 hours of continuous use with industrial alkaline batteries)



The **YELLOW JACKET®** refrigeration system analyzer comes in a blow-molded carrying case complete with a TITAN™ 4-valve test and charging manifold, vacuum sensor cordset, battery holder ('AA' size, 2X4), instrument boot, bumper, plug, and sensor/probe boots, USB cable, vacuum sensor and two general purpose "K-Type" probes.

| UPC# | Description |
|-------|---|
| 40812 | Refrigeration system analyzer with TITAN™ 4-valve manifold |
| 40813 | Refrigeration system analyzer with TITAN™ 4-valve manifold, 60" PLUS II™ charging hoses (RYB) with compact ball valve end, and 3/8" Str. fl. x 3/8" 45° (Y) |
| 40815 | Refrigeration system analyzer with TITAN™ 4-valve manifold and 60" PLUS II™ charging hoses (RYB) |

| Replacement parts | |
|-------------------|---|
| 40819 | Vacuum sensor cordset |
| 40820 | Battery holder, 'AA' size, 2X4 |
| 40821 | Refrigeration system analyzer boot |
| 40823 | Refrigeration system analyzer battery door |
| 40824 | Refrigeration system analyzer bumper, plug & sensor/probe boots |
| 40827 | USB cable |
| 40828 | General purpose "K-Type" probe (4 meter) |
| 40832 | AA Batteries (package of 8) |
| 69081 | Replacement accessory pouch |
| 69087 | Vacuum sensor |
| 69218 | General purpose "K-Type" probe (1 meter) |

TITAN™ 4-VALVE TEST & CHARGING MANIFOLD °F and °C

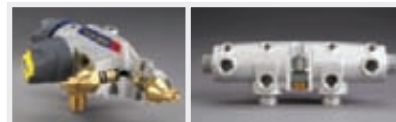


Forged aluminum alloy body makes this unit lightweight for handling ease with the durability and reliability required for repeated use.

- Fourth hose to enable connection to hi-/lo-sides, refrigerant tank and recovery unit or vacuum pump for diagnostics, evacuation and charging without switching hoses
- 3/8" Vacuum port for use with larger hose to cut evacuation time by up to 33% (all other fittings are 1/4")
- Large, easy-to-read 3-1/8" (80 mm) steel case red and blue, 1% accuracy (Class 1) gauges
- Front access for easy field recalibration
- Double "O" ring piston for reliability and long service life
- Exclusive 100 mesh filter in-line on all flare fittings helps keep out particulate material and extend the life of the seats

- Contoured easy-grip handles for positive control; color-coded for ready identification
- Sight glass to easily view refrigerant movement and condition during charging and recovery
- Optional protective gauge boots available
- Heavy duty hook won't pull out
- Also available with 3-1/2" (90 mm) red and blue liquid-filled gauges
- Manifold and hose holder fittings 1/4"-3/8"-1/4"-1/4" unless otherwise identified
- Made in the USA 

Replacement parts on page 42.



TITAN™ 4-Valve

| UPC# | Description - °F/°C | Gauges | Scale | Refrigerant |
|--------|---|----------|-------------|--|
| 49892 | Manifold only | Solar | bar/psi/MPa | R-22/134a/404A/407C/409A/410A/438A/507 |
| 49895 | With 60" PLUS II™ RYB and 3/8" x 45° | Solar | bar/psi/MPa | |
| 49915 | Manifold only with 5/16"-3/8"-1/4"-5/16" anchor fittings and 1/4"-3/8"-1/4"-1/4" service fittings | Red/Blue | kPa/psi | R-410A |
| 49922 | Manifold only | Liquid | bar/psi | R-22 |
| 49925 | With 60" PLUS II™ RYB and 3/8" x 45° | Liquid | bar/psi | |
| UPC# | Description - °F | Gauges | Scale | Refrigerant |
| 49962 | Manifold only | Red/Blue | bar/psi | R-410A |
| 49982 | Manifold only | Liquid | bar/psi | |
| 49960 | With 60" PLUS II™ compact ball valve RYB and 3/8" x 45° | Red/Blue | bar/psi | |
| 49965 | With 60" PLUS II™ RYB and 3/8" x 45° | Red/Blue | bar/psi | |
| 49973 | Manifold only | Liquid | psi | R-22/410A |
| 49977 | With 60" PLUS II™ RYB and 3/8" x 45° | Liquid | psi | |
| 49963 | Manifold only | Red/Blue | psi | R-22/404A/410A |
| 49967 | With 60" PLUS II™ RYB and 3/8" x 45° | Red/Blue | psi | |
| 49968 | With 60" PLUS II™ compact ball valve RYB and 3/8" x 45° | Red/Blue | psi | |
| 49283* | Manifold only | Red/Blue | psi | |
| 49902 | Manifold only | Red/Blue | psi | R-12/22/502 |
| 49905 | With 60" PLUS II™ RYB and 3/8" x 45° | Red/Blue | psi | |
| 49983 | Manifold only | Red/Blue | psi | R-22/134a/404A |
| 49987 | With 60" PLUS II™ RYB and 3/8" x 45° | Red/Blue | psi | |
| 49993 | Manifold only | Liquid | psi | |
| 49997 | With 60" PLUS II™ RYB and 3/8" x 45° | Liquid | psi | |
| 49932 | Manifold only | Red/Blue | psi | R-134a/404A/407C |
| 49935 | With 60" PLUS II™ RYB and 3/8" x 45° | Red/Blue | psi | |
| 49952 | Manifold only | Liquid | psi | |
| 49955 | With 60" PLUS II™ RYB and 3/8" x 45° | Liquid | psi | |
| 49900 | With 72" PLUS II™ RYB and 3/8" x 45° | Red/Blue | psi | R-417A/422A/422D |
| UPC# | Description - °C | Gauges | Scale | Refrigerant |
| 49969 | Manifold only with 5/16"-3/8"-1/4"-5/16" anchor fittings and 1/4", 3/8" 1/4", 1/4" service fittings | Red/Blue | bar/psi | R-410A |
| 49970 | Manifold only with 5/16"-3/8"-5/16"-5/16" anchor and service fittings | Red/Blue | bar/psi | |
| 49914 | Manifold only with 5/16"-3/8"-5/16"-5/16" anchor and service fittings | Red/Blue | kPa/psi | |
| 49913 | 49914 with 60" PLUS II™ RYB and 3/8" x 45° | Red/Blue | kPa/psi | |
| 49906 | Manifold only | Red/Blue | bar/MPa | R-12/22/502 |
| 49916 | Manifold only | Red/Blue | bar/psi | |
| 49933 | Manifold only | Red/Blue | bar/psi | R-22/134a/404A |
| 49912 | Manifold only | Red/Blue | kPa/psi | |
| 49911 | 49912 with 60" PLUS II™ RYB and 3/8" x 45° | Red/Blue | kPa/psi | |
| 49903 | Manifold only | Red/Blue | bar/psi | |
| 49936 | Manifold only | Red/Blue | bar/MPa | R-134a/404A/407C |
| 49956 | Manifold only | Red/Blue | bar/psi | |

*  Manifold comes standard with certified gauges. For more information on the certification of 3-1/8" gauges, see page 51.

RECOVERY MACHINES
VACUUM PUMP SYSTEMS
VACUUM AND CHARGING HOSES
HOSE ADAPTERS, VALVES AND PARTS
CHARGING SYSTEMS
GAUGES
ELECTRONIC INSTRUMENTS
HEATING INSTRUMENTS
LEAK MONITORS AND DETECTORS
SYSTEM TOOLS

TITAN™ 2-VALVE TEST & CHARGING MANIFOLD °F and °C



Comes with the same features and benefits as the TITAN™ 4-valve unit but without the fourth hose. All fittings 1/4" unless otherwise noted.



Replacement parts on page 42.

| UPC# | Description - °F/°C | Gauges | Scale | Refrigerant |
|--------|---|----------|-------------|--|
| 49792 | Manifold only | Solar | bar/psi/MPa | R-22/134a/404A/407C/409A/410A/438A/507 |
| 49795 | With 60" PLUS II™ RYB | Solar | bar/psi/MPa | R-22/134a/404A/407C/409A/410A/438A/507 |
| 49815 | Manifold only with 5/16"-1/4"-5/16" anchor fittings and 1/4" service fittings | Red/Blue | kPa/psi | R-410A |
| UPC# | Description - °F | Gauges | Scale | Refrigerant |
| 49862 | Manifold only | Red/Blue | bar/psi | R-410A |
| 49865 | With 60" PLUS II™ RYB | Red/Blue | bar/psi | R-410A |
| 49860 | With 60" PLUS II™ compact ball valve RYB | Red/Blue | bar/psi | R-410A |
| 49802 | Manifold only | Red/Blue | psi | R-12/22/502 |
| 49282* | Manifold only | Red/Blue | psi | R-12/22/502 |
| 49805 | With 60" PLUS II™ RYB | Red/Blue | psi | R-12/22/502 |
| 49801 | With 60" PLUS II™ SealRight RYB | Red/Blue | psi | R-12/22/502 |
| 49883 | Manifold only | Red/Blue | psi | R-22/134a/404A |
| 49887 | With 60" PLUS II™ RYB | Red/Blue | psi | R-22/134a/404A |
| 49889 | With 60" PLUS II™ SealRight RYB | Red/Blue | psi | R-22/134a/404A |
| 49863 | Manifold only | Red/Blue | psi | R-22/404A/410A |
| 49281* | Manifold only | Red/Blue | psi | R-22/404A/410A |
| 49867 | With 60" PLUS II™ RYB | Red/Blue | psi | R-22/404A/410A |
| 49868 | With 60" PLUS II™ compact ball valve RYB | Red/Blue | psi | R-22/404A/410A |
| 49832 | Manifold only | Red/Blue | psi | R-134a/404A/407C |
| 49835 | With 60" PLUS II™ RYB | Red/Blue | psi | R-134a/404A/407C |
| 49831 | With 60" PLUS II™ SealRight RYB | Red/Blue | psi | R-134a/404A/407C |
| 49847 | With 72" PLUS II™ Acme fittings RYB | Red/Blue | psi | R-134a |
| UPC# | Description - °C | Gauges | Scale | Refrigerant |
| 49869 | Manifold only with 5/16"-1/4"-5/16" anchor and 1/4" service fittings | Red/Blue | bar/psi | R-410A |
| 49870 | Manifold only with 5/16" anchor and service fittings | Red/Blue | bar/psi | R-410A |
| 49814 | Manifold only with 5/16" anchor and service fittings | Red/Blue | kPa/psi | R-410A |
| 49813 | 49814 with 60" PLUS II™ 5/16" x 5/16" RYB | Red/Blue | kPa/psi | R-410A |
| 49806 | Manifold only | Red/Blue | bar/MPa | R-12/22/502 |
| 49816 | Manifold only | Red/Blue | bar/psi | R-12/22/502 |
| 49833 | Manifold only | Red/Blue | bar/psi | R-22/134a/404A |
| 49812 | Manifold only | Red/Blue | kPa/psi | R-22/134a/404A |
| 49811 | 49812 with 60" PLUS II™ RYB | Red/Blue | kPa/psi | R-22/134a/404A |
| 49803 | Manifold only | Red/Blue | bar/psi | R-22/134a/407C |
| 49836 | Manifold only | Red/Blue | bar/MPa | R-134a/404A/407C |
| 49856 | Manifold only | Red/Blue | bar/psi | R-134a/404A/407C |

* Manifold comes standard with certified gauges. For more information on the certification of 3-1/8" gauges, see page 51.

PROTECTIVE GAUGE BOOTS

For 2-1/2" (63.5 mm), 3-1/8" (80 mm), and solar gauges



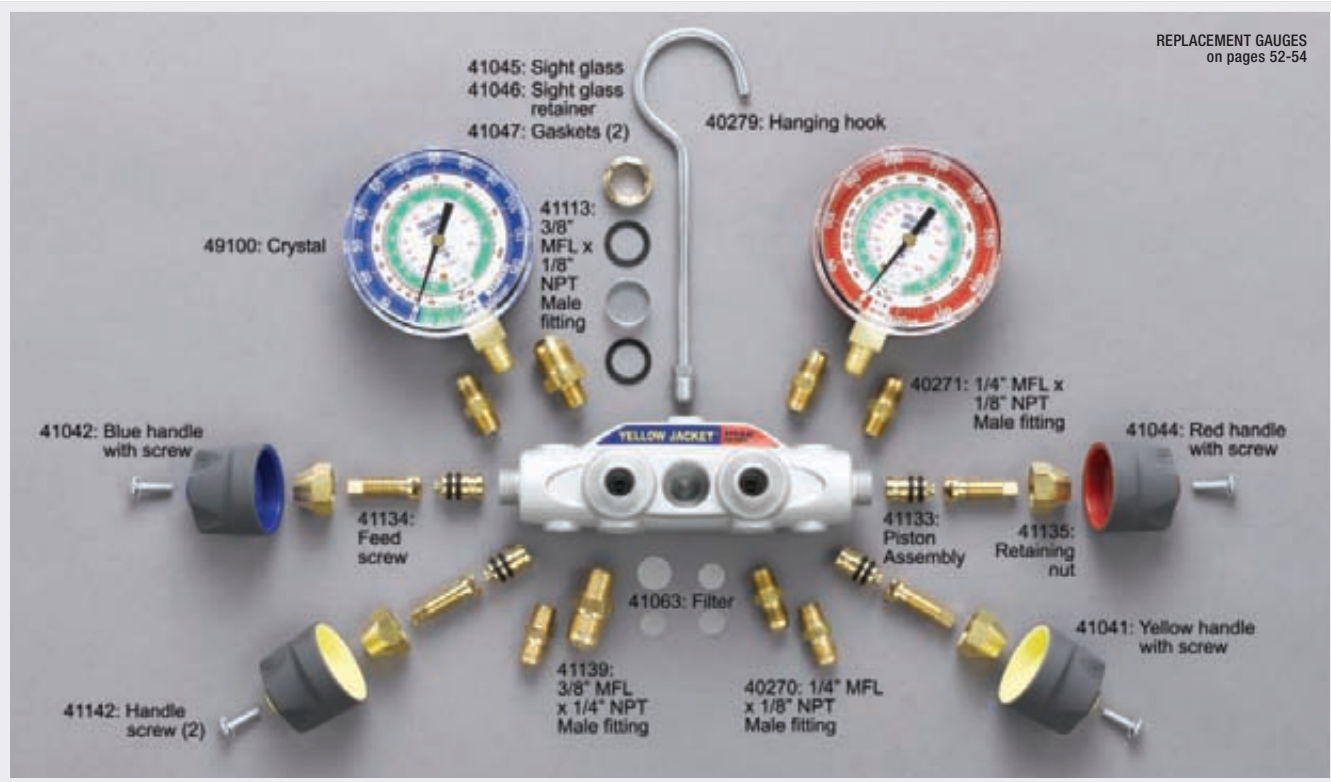
Rubber boots slip easily around gauges to cushion and protect them from impact.

- Fit 2-1/2" and 3-1/8" gauges without covering easy access recalibration screw
- Color-coded red or blue to match gauge

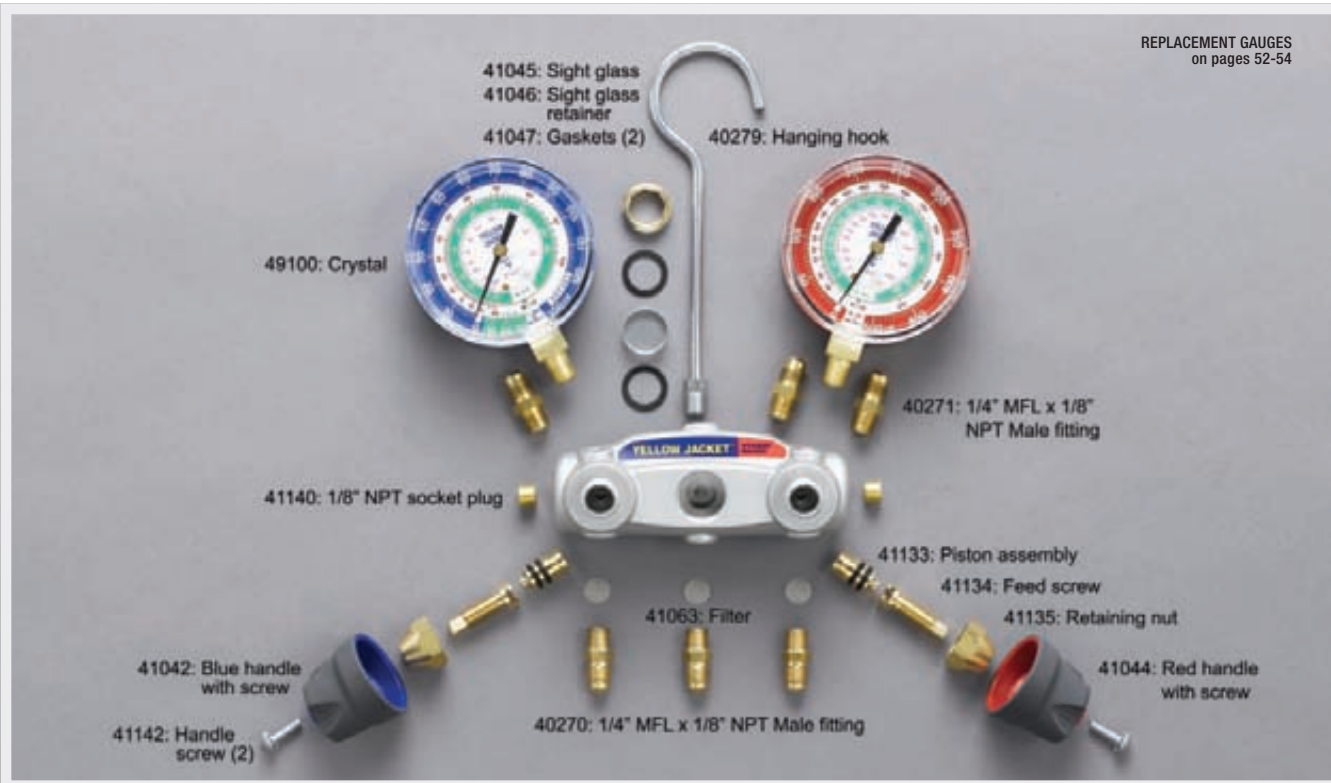
| UPC# | Description |
|-------|-----------------------------------|
| 49090 | 2-1/2" Set of gauge boots |
| 49091 | 2-1/2" Red protective gauge boot |
| 49092 | 2-1/2" Blue protective gauge boot |
| 49190 | 3-1/8" Set of gauge boots |
| 49191 | 3-1/8" Red protective gauge boot |
| 49192 | 3-1/8" Blue protective gauge boot |
| 49087 | Red solar gauge boot |
| 49088 | Blue solar gauge boot |
| 49089 | Solar gauge boot set |

RECOVERY MACHINES
 VACUUM PUMP SYSTEMS
 VACUUM AND CHARGING HOSES
 HOSE ADAPTERS, VALVES AND PARTS
 CHARGING SYSTEMS
 GAUGES
 ELECTRONIC INSTRUMENTS
 HEATING INSTRUMENTS
 LEAK MONITORS AND DETECTORS
 SYSTEM TOOLS

TITAN™ 4-VALVE MANIFOLD REPLACEMENT PARTS



TITAN™ 2-VALVE MANIFOLD REPLACEMENT PARTS



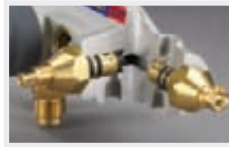
BRUTE II™ 4-VALVE TEST & CHARGING MANIFOLD °F and °C



The *BRUTE II™* 4-Valve Test and Charging Manifold provides the flow that's proven faster than any conventional manifold. The aluminum alloy body is forged for strength and reliability with 3/8" bores through the body to speed the job.

- Fourth hose enables connection to hi-/lo-sides, refrigerant tank and recovery unit or vacuum pump for diagnostics, evacuation and charging without switching hoses
- Available in 1/4" hi-/lo-sides with 3/8" vacuum port for regular jobs, or 3/8" hi-/lo-sides with 1/2" vacuum port for larger systems

- Front access for easy field recalibration



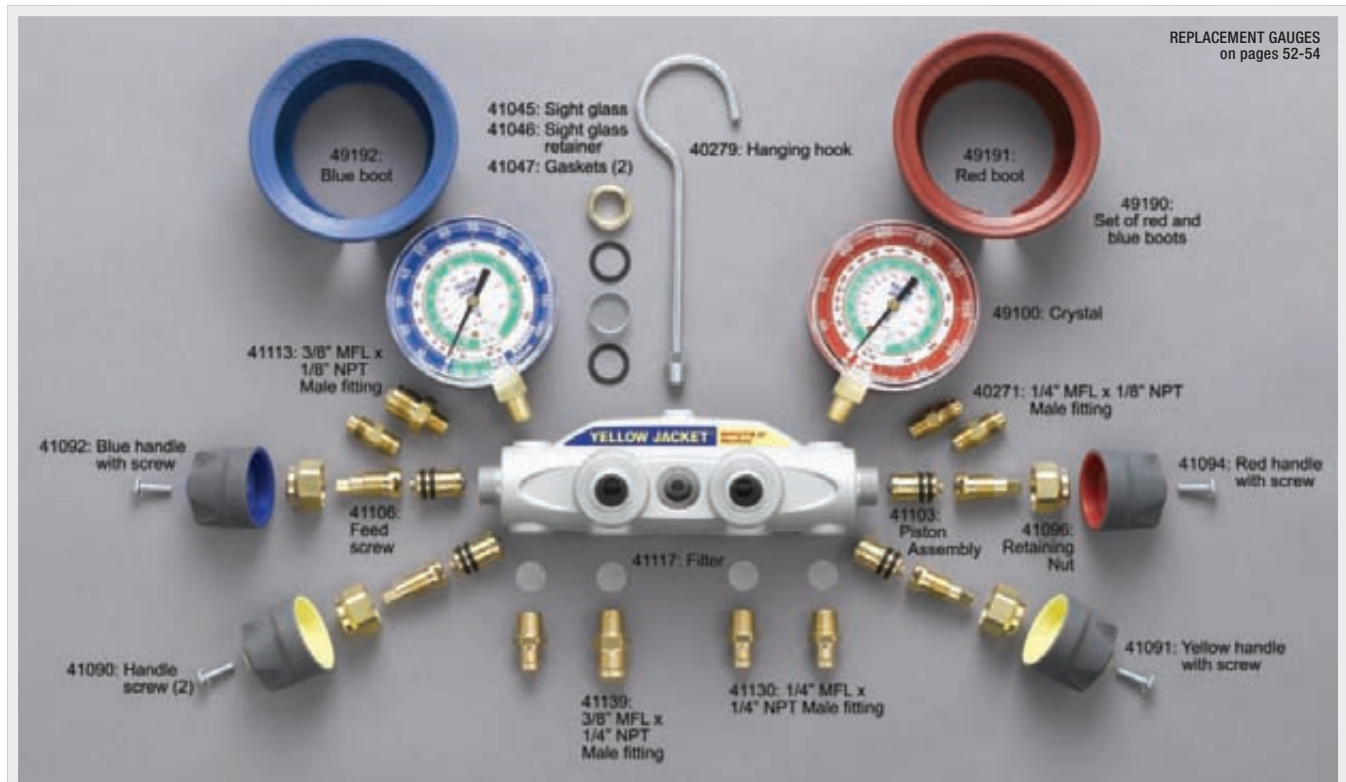
- Double "O" ring piston for reliability and long service life
- Exclusive 100-mesh filter in-line on all flare fittings helps keep out particulate material and extend the life of the seat
- Contoured easy-grip handles for positive control; color-coded for ready identification
- Sight glass to easily view refrigerant movement and condition during charging and recovery
- Heavy duty hook won't pull out
- Also available with 3-1/2" (90 mm) red and blue liquid-filled gauges
- Manifold and hose holder fittings 1/4"-3/8"-1/4"-1/4" unless otherwise identified
- Made in the USA

Replacement parts on page 44.

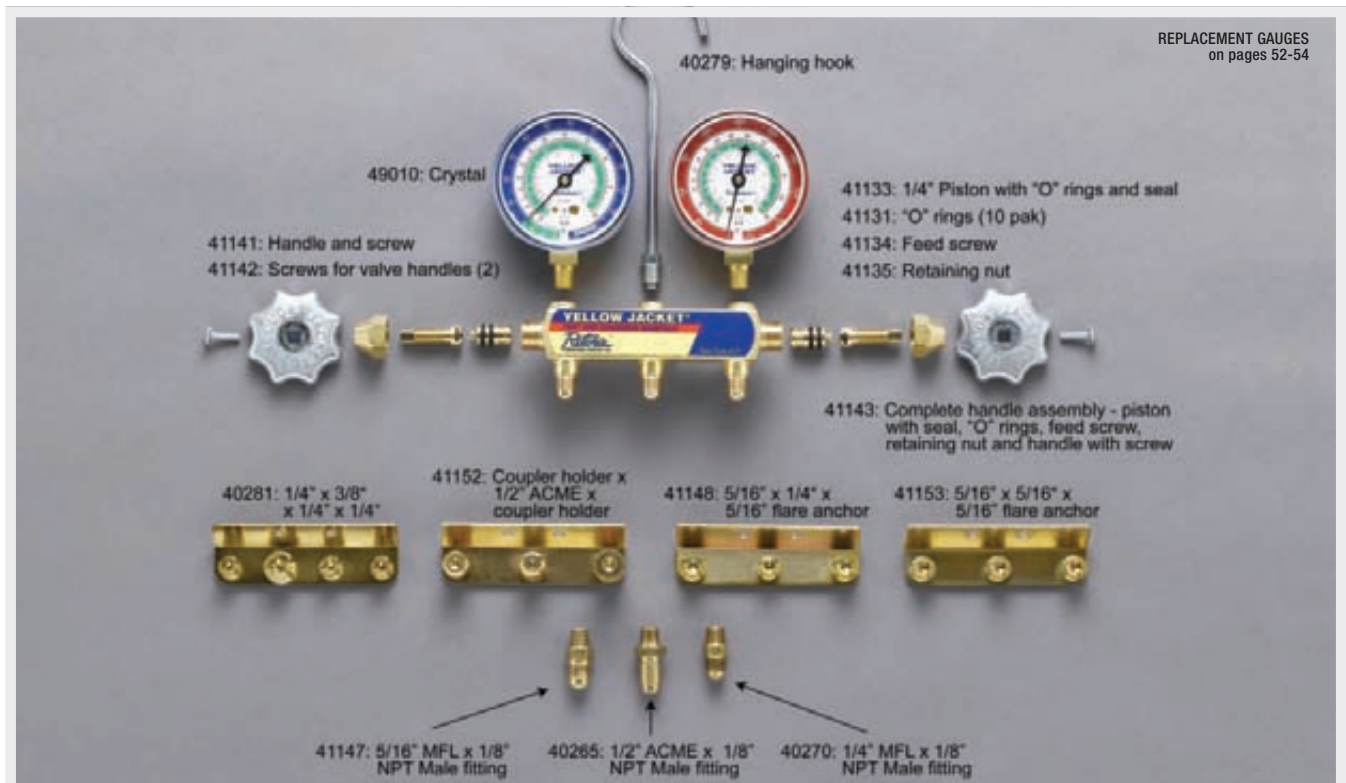
| BRUTE II™ 4-Valve | | | | | | |
|------------------------------|---|-------------|--------------|----------|---------|------------------|
| UPC# | Description - °F/°C | Vacuum port | Hi/Lo charge | Gauges | Scale | Refrigerant |
| 46001 | Manifold only | 3/8" | 1/4" | Liquid | bar/psi | R-410A |
| 46021 | Manifold only | 3/8" | 1/4" | Liquid | bar/psi | R-22 |
| 46026 | With 72" PLUS II™ RYB and 3/8" x 45° | 3/8" | 1/4" | Liquid | bar/psi | |
| UPC# | Description - °F | Vacuum port | Hi/Lo charge | Gauges | Scale | Refrigerant |
| 46000 | Manifold only | 3/8" | 1/4" | Red/Blue | bar/psi | R-410A |
| 46003 | With 60" PLUS II™ compact ball valve RYB and 3/8" x 45° | 3/8" | 1/4" | Red/Blue | bar/psi | |
| 46011 | Manifold only | 3/8" | 1/4" | Liquid | psi | R-22/410A |
| 46010 | Manifold only | 3/8" | 1/4" | Red/Blue | psi | R-22/404A/410A |
| 46013 | With 60" PLUS II™ compact ball valve RYB and 3/8" x 45° | 3/8" | 1/4" | Red/Blue | psi | |
| 49291* | Manifold only | 3/8" | 1/4" | Red/Blue | psi | R-12/22/502 |
| 46020 | Manifold only | 3/8" | 1/4" | Red/Blue | psi | |
| 46022 | With 60" PLUS II™ RYB and 3/8" x 45° | 3/8" | 1/4" | Red/Blue | psi | R-134a/404A/407C |
| 49292* | Manifold only | 3/8" | 1/4" | Red/Blue | psi | |
| 46030 | Manifold only | 3/8" | 1/4" | Red/Blue | psi | R-22/134a/404A |
| 46031 | Manifold only | 3/8" | 1/4" | Liquid | psi | |
| 46032 | With 60" PLUS II™ RYB and 3/8" x 45° | 3/8" | 1/4" | Red/Blue | psi | R-22/134a/404A |
| 46038 | With 72" PLUS II™ RYB and 3/8" x 45° | 3/8" | 1/4" | Liquid | psi | |
| 46040 | Manifold only | 3/8" | 1/4" | Red/Blue | psi | R-22/134a/404A |
| 46041 | Manifold only | 3/8" | 1/4" | Liquid | psi | |
| 46042 | With 60" PLUS II™ RYB and 3/8" x 45° | 3/8" | 1/4" | Red/Blue | psi | R-22/134a/404A |
| 46043 | With 60" PLUS II™ compact ball valve RYB and 3/8" x 45° | 3/8" | 1/4" | Red/Blue | psi | |
| 46048 | With 72" PLUS II™ RYB and 3/8" x 45° | 3/8" | 1/4" | Liquid | psi | |
| UPC# | Description - °C | Vacuum port | Hi/Lo charge | Gauges | Scale | Refrigerant |
| 46160 | Manifold only with 5/16"-3/8"-1/4"-5/16" anchor and 1/4" service fittings | - | - | Red/Blue | bar/psi | R-410A |
| 46170 | Manifold only with 5/16"-3/8"-5/16"-5/16" anchor and service fittings | - | - | Red/Blue | bar/psi | |
| 46120 | Manifold only | - | - | Red/Blue | bar/MPa | R-12/22/502 |
| 46180 | Manifold only | - | - | Red/Blue | bar/psi | |
| 46130 | Manifold only | - | - | Red/Blue | bar/MPa | R-134a/404A/407C |
| 46190 | Manifold only | - | - | Red/Blue | bar/psi | |
| 46140 | Manifold only | - | - | Red/Blue | bar/psi | R-22/134a/404A |
| 46150 | Manifold only | - | - | Red/Blue | bar/psi | |
| BRUTE II™ 4-Valve commercial | | | | | | |
| UPC# | Description - °F/°C | Vacuum port | Hi/Lo charge | Gauges | Scale | Refrigerant |
| 46081 | Manifold only | 1/2" | 3/8" | Liquid | bar/psi | R-22 |
| 46084 | With 3 at 3/8" x 60" heavy duty - Straight x 45° and 1 at 1/2" x 60" heavy duty - Straight x Straight | 1/2" | 3/8" | Liquid | bar/psi | |
| UPC# | Description - °F | Vacuum port | Hi/Lo charge | Gauges | Scale | Refrigerant |
| 46080 | Manifold only | 3/8" | 3/8" | Red/Blue | psi | R-12/22/502 |
| 46082 | With 4 at 3/8" x 60" heavy duty - Straight x 45° | 3/8" | 3/8" | Red/Blue | psi | |
| 46090 | Manifold only | 3/8" | 3/8" | Red/Blue | psi | R-22/134a/404A |
| 46091 | Manifold only | 1/2" | 3/8" | Liquid | psi | |
| 46092 | With 4 at 3/8" x 60" heavy duty - Straight x 45° | 3/8" | 3/8" | Red/Blue | psi | R-22/134a/404A |
| 46094 | With 3 at 3/8" x 60" heavy duty - Straight x 45° and 1 at 1/2" x 60" heavy duty - Straight x Straight | 1/2" | 3/8" | Liquid | psi | |

* Manifold comes standard with certified gauges. For more information on the certification of 3-1/8" gauges, see page 51.

BRUTE II™ MANIFOLD REPLACEMENT PARTS



SERIES 41 MANIFOLD REPLACEMENT PARTS



RECOVERY MACHINES
 VACUUM PUMP SYSTEMS
 VACUUM AND CHARGING HOSES
 HOSE ADAPTERS, VALVES AND PARTS
 CHARGING SYSTEMS
 GAUGES
 ELECTRONIC INSTRUMENTS
 HEATING INSTRUMENTS
 LEAK MONITORS AND DETECTORS
 SYSTEM TOOLS

SERIES 41 MANIFOLDS

°F and °C with 2-1/2" (63.5 mm) gauges



Forged body is solid brass for durability. Full porting maximizes capacity. Metal valve handles are full size for easy operation. Hose anchors are forged into back of body at 45°.

- Flutterless™ technology means surge protector and silicone dampened movement helps minimize needle pulsation for easier, more accurate readings
- Sliding double “O” ring pistons reduces wear
- Most manifolds include color-coded YELLOW JACKET charging hoses
- Easy-to-read 2-1/2" (63.5 mm) steel case gauges with 3-2-3% accuracy (Class B)
- Limited lifetime warranty on manifold bar and valves – not gauges. See warranty information for details
- Made in the USA

| Box | Clamshell | | | | |
|---------|-----------|--|-------------------------|-------------------------|--------|
| UPC# | UPC# | Description - °F/°C - Solar | Scale | Refrigerant | |
| 41612 | - | Manifold only | bar/psi/MPa | R-22/134a/404A/ | |
| 41615 | - | With 60" PLUS II™ standard fittings | bar/psi/MPa | 407C/409A/410A/438A/507 | |
| UPC# | UPC# | Description - °F - Red/Blue | Scale | Refrigerant | |
| 41212** | 42000 | Manifold only | psi | R-12/22/502 | |
| 41213 | - | With 36" RYB | psi | | |
| 41220 | - | With 48" RYB | psi | | |
| 41215** | 42015 | With 60" RYB | psi | | |
| 41219 | - | With 72" RYB | psi | | |
| 43213 | - | With 36" PLUS II™ standard fittings | psi | | |
| 43220 | - | With 48" PLUS II™ standard fittings | psi | | |
| 43215 | - | With 60" PLUS II™ standard fittings | psi | | |
| 43219 | - | With 72" PLUS II™ standard fittings | psi | | |
| 44213 | - | With 36" PLUS II™ SealRight fittings | psi | | |
| 44220 | - | With 48" PLUS II™ SealRight fittings | psi | | |
| 44215 | - | With 60" PLUS II™ SealRight fittings | psi | | |
| 44219 | - | With 72" PLUS II™ SealRight fittings | psi | | |
| 42215 | - | With 60" PLUS II™ compact ball valve fittings | psi | | |
| 42219 | - | With 72" PLUS II™ compact ball valve fittings | psi | | |
| 41312** | 42010 | Manifold only | psi | R-134a/404A/507 | |
| 41313 | - | With 36" RYB | psi | | |
| 41311 | - | With 48" RYB | psi | | |
| 41315** | 42014 | With 60" RYB | psi | | |
| 41319 | - | With 72" RYB | psi | | |
| 43313 | - | With 36" PLUS II™ standard fittings | psi | | |
| 43315 | - | With 60" PLUS II™ standard fittings | psi | | |
| 43319 | - | With 72" PLUS II™ standard fittings | psi | | |
| 44313 | - | With 36" PLUS II™ SealRight fittings | psi | | |
| 44315 | - | With 60" PLUS II™ SealRight fittings | psi | | |
| 44319 | - | With 72" PLUS II™ SealRight fittings | psi | | |
| 42315 | - | With 60" PLUS II™ compact ball valve fittings | psi | | |
| 41712** | 42030 | Manifold only | bar/psi | | R-410A |
| 41709 | - | With 60" PLUS II™ standard fittings | bar/psi | | |
| 41715* | - | With 60" PLUS II™ standard fittings for R-410A | bar/psi | | |
| 41710 | - | With HCA 60" PLUS II™ standard fittings | bar/psi | | |
| 41702 | - | With HCABV 60" PLUS II™ standard fittings | bar/psi | | |
| 42715 | - | With 60" PLUS II™ compact ball valve fittings | bar/psi | | |
| 41711* | - | With 60" PLUS II™ compact ball valve fittings for R-410A | bar/psi | | |
| UPC# | UPC# | Description - °C - Red/Blue | Scale | Refrigerant | |
| 41282** | 42008 | Manifold only | bar/psi | R-12/22/502 | |
| 41283 | - | With 36" RYB | bar/psi | | |
| 41285 | - | With 60" RYB | bar/psi | | |
| 41222** | 42002 | Manifold only | kPa/psi | | |
| 41223 | - | With 36" RYB | kPa/psi | | |
| 41225 | - | With 60" RYB | kPa/psi | | |
| 41292 | - | Manifold only | kg/cm ² /psi | | |
| 41293 | - | With 36" RYB | kg/cm ² /psi | | |
| 41295 | - | With 60" RYB | kg/cm ² /psi | | |
| 41299 | - | With 72" RYB | kg/cm ² /psi | | |
| 41382 | - | Manifold only | bar/psi | | |
| 41353 | - | With 36" RYB | bar/psi | | |
| 41355 | - | With 60" RYB | bar/psi | | |
| 43355 | - | With 60" PLUS II™ standard fittings | bar/psi | | |
| 41392 | - | Manifold only | kg/cm ² /psi | | |
| 41363 | - | With 36" RYB | kg/cm ² /psi | | |
| 41365 | - | With 60" RYB | kg/cm ² /psi | | |
| 43365 | - | With 60" PLUS II™ standard fittings | kg/cm ² /psi | | |
| 41332** | 42012 | Manifold only | bar/psi | R-134a/404A/407C | |
| 40944 | - | Manifold only with 1/4" ports and 5/16" hose fittings | bar/MPa | R-410A | |
| 41781 | - | Manifold only with 5/16" fittings | bar/MPa | | |
| 41780 | - | Manifold only with 1/4" fittings | bar/MPa | | |

* Special R-410A hose – R/B hoses are 1/4" x 45' 5/16" end; Y hose is 1/4" x 45' 1/4" end.
 ** Now shipping in clamshells. Order either part number.

RECOVERY MACHINES
 VACUUM PUMP SYSTEMS
 VACUUM AND CHARGING HOSES
 HOSE ADAPTERS, VALVES AND PARTS
 CHARGING SYSTEMS
 GAUGES
 ELECTRONIC INSTRUMENTS
 HEATING INSTRUMENTS
 LEAK MONITORS AND DETECTORS
 SYSTEM TOOLS

RECOVERY MACHINES
VACUUM PUMP SYSTEMS
VACUUM AND CHARGING HOSES
HOSE ADAPTERS, VALVES AND PARTS
CHARGING SYSTEMS
GAUGES
ELECTRONIC INSTRUMENTS
HEATING INSTRUMENTS
LEAK MONITORS AND DETECTORS
SYSTEM TOOLS

SERIES 41 MANIFOLDS

°F and °C with 3-1/8" (80 mm) gauges



Series 41 manifolds are also available with larger, easier to read 3-1/8" color-coded gauges in rugged steel cases with polycarbonate crystals. These gauges feature 1% accuracy (Class 1) for an exact reading in critical charge systems.

- Color-coded scales
- Sliding double "O" ring pistons reduce wear
- Long life nylon seats
- Forged brass body for durability
- Full porting maximizes capacity and flow
- Some models include color-coded, 60" PLUS II™ hoses with standard 1/4" flare fittings
- Hose assemblies UL recognized for 4000 psi (275 bar) burst and 800 psi (55 bar) working pressure. File# SA9737
- Made in the USA

SERIES 41 DELUXE MANIFOLDS

°F Class 1 (1% accuracy) brass gauges



All the same features as the regular "Series 41" with 1% accuracy (Class 1) brass gauges.

- Upgraded movement with phosphor bronze plates, brass gears and pinions. Dissimilar parts create less friction and last longer. FlutterLess™ technology included
- Polished solid brass case with glass crystals
- Made in the USA

| Box | Clamshell | | | |
|---------|-----------|--|-------------|--------------------|
| UPC# | UPC# | Description - °F/°C | Scale | Refrigerant |
| - | 41612 | Manifold only - solar gauge | bar/psi/MPa | R-22/134a/404A/ |
| - | 41615 | With 60" PLUS II™ standard fittings - solar gauge | bar/psi/MPa | 407C/422D/427A/507 |
| 41863 | - | Manifold only with 5/16"-1/4"-5/16" anchor fittings and 1/4" service fittings - red/blue gauge | kPa/psi | R-410A |
| UPC# | UPC# | Description - °F - Red/Blue | Scale | Refrigerant |
| - | 42021 | Manifold only | bar/psi | R-410A |
| - | 42024 | With 60" PLUS II™ standard fittings | bar/psi | |
| 41842 | - | Manifold only | psi | |
| - | 42007 | With 60" PLUS II™ standard fittings | psi | R-12/22/134a |
| 41846 | - | With 72" PLUS II™ with couplers | psi | |
| 49271** | 42001 | Manifold only | psi | R-22/404A/410A |
| - | 42004 | With 60" PLUS II™ standard fittings | psi | |
| 49272** | 42005 | Manifold only | psi | R-22/134a/404A |
| - | 42006 | With 60" PLUS II™ standard fittings | psi | |
| UPC# | UPC# | Description - °C - Red/Blue | Scale | Refrigerant |
| - | 41622 | Manifold only | bar/psi | |
| - | 41852 | Manifold only | kPa/psi | R-22/134a/404A |
| - | 41855 | With 60" PLUS II™ standard fittings | kPa/psi | |
| 41642 | - | Manifold only | bar/psi | R-22/134a/407C |
| 41632 | - | Manifold only | bar/psi | R-12/134a/413A |
| 41652 | - | Manifold only with 5/16", 1/4", 5/16" anchor and 1/4" service fittings | bar/psi | |
| 41862 | - | Manifold only with 5/16" anchor and service fittings | kPa/psi | R-410A |
| - | 41865 | 41862 with 60" PLUS II™ 5/16" fittings | kPa/psi | |
| - | 42031 | Manifold only | psi | R-22/404A/410A |
| - | 42034 | With 60" PLUS II™ hose, standard fittings | psi | |

| UPC# | Description | Scale | Refrigerant |
|---------|---|-------|----------------|
| 41232† | Manifold only | psi | |
| 41233 | With 36" RYB | psi | |
| 43233 | With 36" PLUS II™ standard fittings | psi | |
| 41235 | With 60" RYB | psi | R-12/22/502 |
| 43235 | With 60" PLUS II™ standard fittings | psi | |
| 44235 | With 60" PLUS II™ SealRight fittings | psi | |
| 42332†† | Manifold only | psi | |
| 42333 | With 36" RYB | psi | |
| 42335 | With 60" RYB | psi | R-22/134a/404A |
| 42436 | With 60" PLUS II™ compact ball valve fittings | psi | |
| 42435 | With 60" PLUS II™ standard fittings | psi | |

† Now shipping in clamshells UPC# 42020. Order either part number.
 †† Now shipping in clamshells UPC# 42011. Order either part number.
 See page 36 for automotive couplers.

* Manifold comes standard with certified gauges. For more information on the certification of 3-1/8" gauges, see page 51.
 ** Now shipping in clamshells. Order either part number. See page 36 for automotive couplers.

NH₃ AMMONIA MANIFOLD

This heavy duty manifold features cast iron body and full size metal handles. Dual temperature/pressure R717 gauge has bar with °C and psi with °F ammonia scales.

- Finger-tight one-piece valve stem for positive seal on nylon seat
- Easy, accurate valve adjustment
- Use only with NH₃ rated hoses
- Made in the USA



| UPC# | Description |
|-------|--|
| 40190 | Manifold body with valves |
| 40192 | Manifold and gauges |
| 40193 | Manifold and gauges with three NHA 48" hoses |
| 40199 | Replacement valve assembly |
| 41151 | Hose anchor |

HEAT PUMP MANIFOLD



The YELLOW JACKET® Heat Pump Manifold features two 800 psi gauges to read all heat pump pressure conditions. Traditional lo-side manifold gauges can be susceptible to damage when heat pumps go into heating mode. Because the lo-side gauge of the YELLOW JACKET Heat Pump Manifold is also designed for pressures up to 800 psi, it can read the pressure whether the pump is in heating mode, cooling mode or transition.

- Large 3-1/8" gauges feature black steel cases with polycarbonate crystal
- Hi- and lo-side gauges read up to 800 psi
- Larger dials are bold and easy to read
- Dials with 1% accuracy (Class 1) full scale movement provide the level of accuracy necessary for critical charge systems
- Proven sliding double "O" ring pistons reduce wear
- Long life nylon seats
- Forged brass body for durability
- Full porting maximizes capacity and flow
- Full-size metal valve handles for easy operation
- Hose assemblies UL recognized for 4000 psi (275 bar) burst and 800 psi (55 bar) working pressure (File # SA9737)
- Made in the USA

| UPC# | Description | Hoses | Hose holder fittings | Refrigerants |
|---------------------|---------------------------------------|--|----------------------|----------------------------|
| 42041 | Heat pump manifold | None | 1/4-1/4-1/4" | R-22/ R-407C/ R-410A |
| 42044 | Heat pump manifold | (3) 60" black PLUS II™ 1/4" hoses | 1/4-1/4-1/4" | |
| 42040* | Heat pump manifold in fitted backpack | (3) 60" black PLUS II™ 1/4" hoses | 1/4-1/4-1/4" | |
| 49133 | High side replacement gauge | 800 psi, °F | - | |
| 49134 | Low side replacement gauge | 800 psi, °F | - | R-410A |
| 42052 | Heat pump manifold | None | 1/4-1/4-1/4" | |
| 42055 | Heat pump manifold | (3) 60" black PLUS II™ 1/4" ball valve hoses | 1/4-1/4-1/4" | |
| 42051 | Heat pump manifold | None | 5/16-1/4-5/16" | |
| 42054 | Heat pump manifold | 60" black PLUS II™ 1/4" ball valve hoses; (2) 5/16" on service end (1) 1/4" on service end | 5/16-1/4-5/16" | R-410A |
| 49141 | High side replacement gauge | 800 psi (55 bar), °C and °F | - | |
| 49142 | Low side replacement gauge | 800 psi (55 bar), °C and °F | - | |
| *Limited time offer | | | | |

MANIFOLD SELECTION CHART

| Refrigerant - °F/ °C | TITAN™ 4-Valve | TITAN™ 2-Valve | BRUTE II™ 4-Valve | BRUTE II™ 4-Valve commercial | Series 41 |
|--|----------------------------|----------------------------|---|---|-------------|
| R-22/134a/404A/407C/409A/410A/438A/507 | 49892 49895 | 49792 49795 | — | — | 41612 41615 |
| R-22 | 49922 49925 | — | 46021 46026 | 46081 46084 | — |
| R-410A | 49915 | 49815 | 46001 | — | 41863 |
| Refrigerant - °F | TITAN™ 4-Valve | TITAN™ 2-Valve | BRUTE II™ 4-Valve | Series 41 | |
| R-12/22/502 | 49902 49905 | 49282 49801 49802 49805 | 46020 46022 46080 46082 49292 | 41212 41213 41232 41233 41235 41215 41219 41220 42000 42015 42020 42215 42219 43213 43215 43219 43220 43233 43235 44213 44215 44219 44220 44235 | |
| R-12/22/134a | — | — | — | 41842 41846 42007 | |
| R-22/134a/404A | 49983 49987 49993 49997 | 49883 49887 49889 | 46040 46041 46042 46043 46048 46090 46091 46092 46094 | 42005 42006 42332 42333 42335 42436 42435 49272 | |
| R-22/404A/410A | 49283 49963 49967 49968 | 49281 49863 49867 49868 | 46010 46013 49291 | 42001 42004 49271 | |
| R-22/410A | 49973 49977 | — | 46011 | | |
| R-134a | — | 49847 | — | — | |
| R-134a/404A/407C | 49932 49935 49952 49955 | 49831 49832 49835 | 46030 46031 46032 46038 | — | |
| R-134a/404A/507 | — | — | — | 41311 41312 41313 41315 41319 42010 42011 42014 42315 43313 43315 43319 44313 44315 44319 | |
| R-410A | 49960 49962 49965 49982 | 49860 49862 49865 | 46000 46003 | 41702 41709 41710 41711 41712 41715 42021 42024 42030 42715 | |
| R417A/422A/422D | 49900 | — | — | — | |
| Refrigerant - °C | TITAN™ 4-Valve | TITAN™ 2-Valve | BRUTE II™ 4-Valve | Series 41 | |
| R-12/22/502 | 49906 49916 | 49806 49816 | 46120 46180 | 41222 41223 41225 41282 41283 41285 41292 41293 41295 41299 42002 42008 | |
| R-12/134a/413A | — | — | — | 41632 | |
| R-22/134a/404A | 49911 49912 49933 | 49833 49811 49812 | 46140 | 41622 41852 41855 | |
| R-22/134a/407C | 49903 | 49803 | 46150 | 41642 | |
| R-134a/404A/407C | 49936 49956 | 49836 49856 | 46130 46190 | 41332 42012 | |
| R-134a/404A/507 | — | — | — | 41353 41355 41363 41365 41382 41392 43355 43365 | |
| R-410A | 49969 49970 49913 49914 | 49869 49870 49813 49814 | 46160 46170 | 40944 41652 41780 41781 41862 41865 | |

RECOVERY MACHINES
 VACUUM PUMP SYSTEMS
 VACUUM AND CHARGING HOSES
 HOSE ADAPTERS, VALVES AND PARTS
 CHARGING SYSTEMS
 GAUGES
 ELECTRONIC INSTRUMENTS
 HEATING INSTRUMENTS
 LEAK MONITORS AND DETECTORS
 SYSTEM TOOLS

RECOVERY MACHINES
VACUUM PUMP SYSTEMS
VACUUM AND CHARGING HOSES
HOSE ADAPTERS, VALVES AND PARTS
CHARGING SYSTEMS
GAUGES
ELECTRONIC INSTRUMENTS
HEATING INSTRUMENTS
LEAK MONITORS AND DETECTORS
SYSTEM TOOLS

LIQUID CHARGER



Liquid charging is recommended when charging blends into refrigeration and air conditioning systems, and a liquid charger adapter is necessary for safe and fast liquid charging through the low pressure side of a system.

- The adapter connects to the cylinder valve or refrigerant can
- To protect the compressor, adapter orifice reduces liquid flow to a level below compressor capacity
- Eliminates the time and work of heating cylinders

| UPC# | Description |
|-------|-------------------------------|
| 41123 | 1/4" Liquid charging adapter |
| 41124 | 5/16" Liquid charging adapter |
| 41132 | 1/4" "O" ring and orifice |
| 41138 | 5/16" "O" ring and orifice |

"O" RING LUBRICANT

To lubricate "O" rings in manifolds when pistons or "O" rings are being replaced. Use sparingly.



| UPC# | Description |
|-------|-------------------------------|
| 41118 | "O" ring lubricant (0.75 oz.) |

MANIFOLD PARTS KIT For Series 41, TITAN™, and BRUTE II™ Manifolds



| UPC# | Description |
|-----------------------|--|
| 41099 | Complete kit |
| 41105 | Box only with label |
| Kit contents/quantity | |
| 41041 | Yellow handle with screw - TITAN (4) |
| 41042 | Blue handle with screw - TITAN (3) |
| 41044 | Red handle with screw - TITAN (3) |
| 41048 | Handle screws (2) - TITAN (6 sets) |
| 41061 | Sight glass (1), retainer (1), gaskets (2) - BRUTE II/TITAN (4 sets) |
| 41090 | Handle screws (2) - BRUTE II (6 sets) |
| 41091 | Yellow handle with screw - BRUTE II (4) |
| 41092 | Blue handle with screw - BRUTE II (3) |
| 41094 | Red handle with screw - BRUTE II (3) |
| 41096 | Valve retaining nut - BRUTE II (4) |
| 41103 | 3/8" Piston - BRUTE II (8) |
| 41106 | Feed screw - BRUTE II (4) |
| 41134 | Feed screw - Series 41/TITAN (6) |
| 41135 | Valve retaining nut - Series 41/TITAN (6) |
| 41141 | Metal handle with screw - Series 41 (4) |
| 41142 | Handle screws (2) - Series 41/TITAN (6 sets) |
| 41133 | 1/4" Piston - Series 41/TITAN (6) |

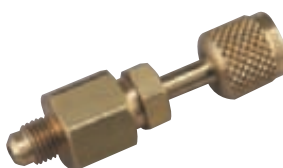
MANIFOLD CARRYING CASES



Heavy duty blue blow-molded cases are available in four different manifold/hose configurations. Includes handle and a long life top hinge.

| UPC# | Description |
|-------|---|
| 40261 | Series 41 case - 13-1/2" x 10" x 3-1/2" |
| 40263 | Series 41 case - 12-1/4" x 8" x 4-1/4" |
| 41111 | Bantam™, BRUTE™ and TITAN™ case - 13-1/2" x 10" x 4-5/8" |
| 40822 | Case for BRUTE™ II and Refrigeration System Analyzer (40815) - 6-1/2" x 17" x 14" |

MANIFOLD PARTICULATE FILTER



As manifold usage changes with more recovery change outs, more particulate matter is drawn through manifolds. Trap the particles with these fittings before they damage valve seats or pass into your recovery equipment. Replaceable, cleanable screens.

| UPC# | Description |
|-------|-----------------------------------|
| 41119 | 1/4" Manifold particulate filter |
| 41120 | 3/8" Manifold particulate filter |
| 41121 | 1/2" Manifold particulate filter |
| 41122 | Replacement filter screen (5 pak) |

SINGLE GAUGE MANIFOLD

- Check pressure on lo-side of system
- Nylon seals
- Double "O" ring pistons

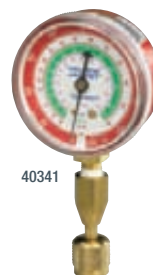


| UPC# | Description |
|-------|-----------------------------------|
| 40318 | Lo-side manifold R-12/22/502 |
| 40319 | Lo-side manifold R-134a/404A/407C |
| 40320 | Lo-side manifold R-410A |

SINGLE TEST GAUGES

Quick pressure checks - use lo- or hi-side gauge with quick coupler to attach directly to system or tanks.

| UPC# | Description |
|--|---|
| Gauge with quick coupler and 12" hose - angle coupling | |
| 40341 | Red pressure °F |
| 40342 | Blue compound °F |
| 14811 | 12" Red hose 1/4" Male flare x 45° quick coupler |
| 14821 | 12" Blue hose 1/4" Male flare x 45° quick coupler |
| 19110 | Quick coupler only |
| Gauge with 19110 quick coupler for recovery tank pressure checks | |
| 40331 | Red pressure °F |
| 40332 | Blue compound °F |
| 19110 | Quick coupler only |



40341



40342